

EDMONTON PUBLIC SCHOOLS

September 26, 2006

TO: Board of Trustees

FROM: L. Thomson, Superintendent of Schools

SUBJECT: Update on Victoria School for the Performing and Visual Arts

ORIGINATOR: R. MacNeil, Executive Director

RESOURCE

STAFF: Jenise Bidulock, Josephine Duquette, Gary Holroyd, Roland Labbe,
John Nicoll, Larry Schwenneker, Shaunda Yeoman

INFORMATION

The purpose of this report is to provide an update to the Board of Trustees on the status of the revitalization of Victoria School for the Performing and Visual Arts.

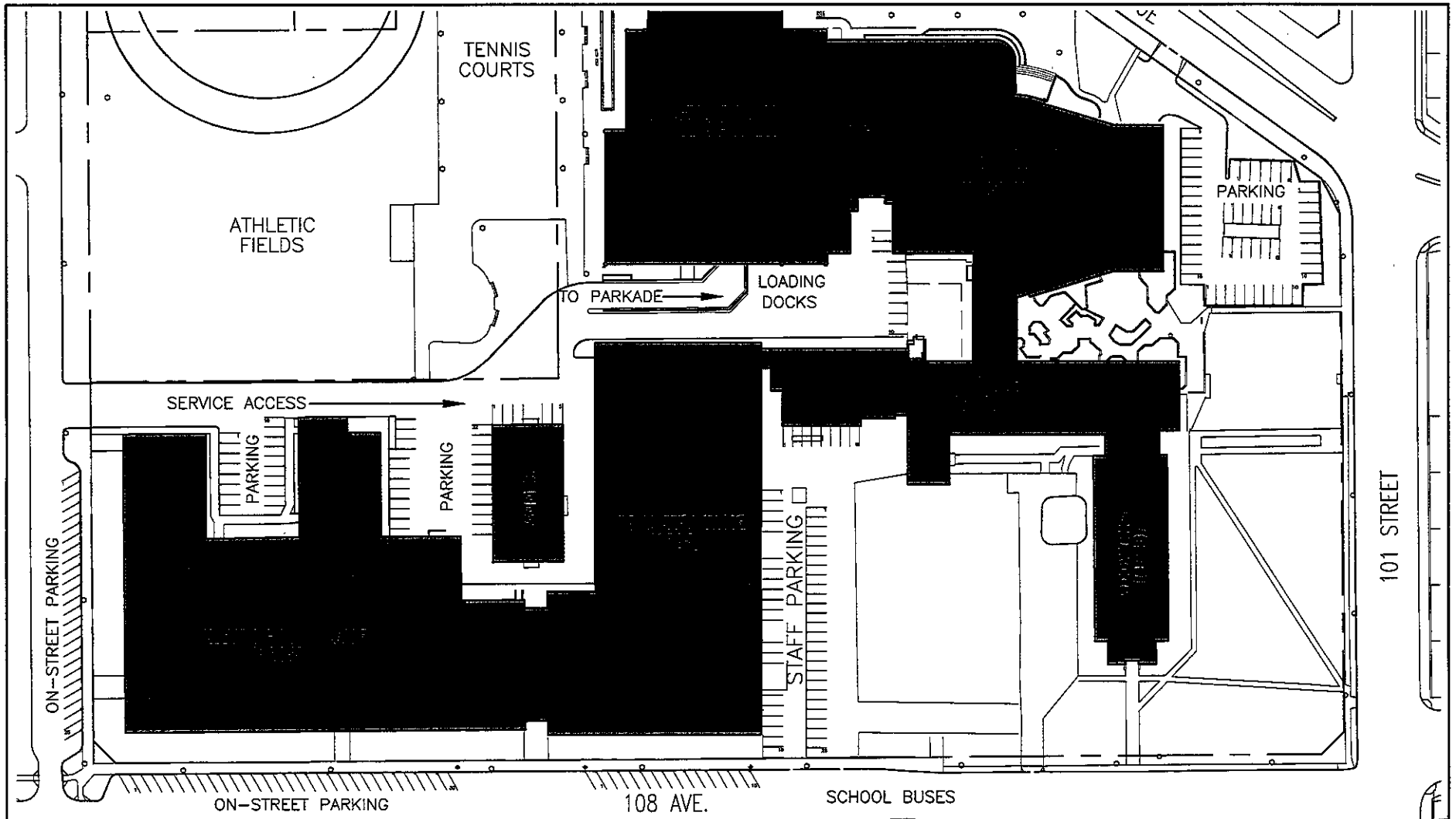
- The former option of new construction on the playing field (the “Greenfield” project) has been abandoned as not being economically viable, does not connect to Eva O. Howard Theatre, and creates particular conflict with future high speed bus/LRT development. Increased demolition and costs to relocate the playing fields are also factors.
- The current approach is a combined modernization to selected portions of the existing school and new school construction of 1,100 new student spaces attached to the Eva O. Howard Theatre wing.
- The school is being designed to accommodate 1700 students. The enrolment breakdown is 400 elementary students, 400 junior high students, and 900 senior high students.
- The school has begun the process of limiting enrolment through optimal enrolment limits at kindergarten, grade 7 and grade 10. Continuing to limit enrolment over the next two years, in addition to a reconfiguration of the high school attendance area, will result in the enrolment reducing to the 1700 capacity required.
- The proposed school project can be successfully completed within the April 2005 support budget of 31 million dollars, including site works and demolition.
- Alberta Infrastructure and Transportation indicated that funds have been allocated for project inflation.
- The schematic design report was completed by September 1, 2006. The project is now moving into the detailed design phase.
- All parties are committed to tendering the project as soon as possible in 2007. Current information indicates a possible earliest tender date of June 2007.
- Phased construction will be incorporated to accommodate the students on site without bussing. Tentative project dates are as follows:

<u>Tender:</u>	June 2007
<u>Phase 1:</u>	
Construction start:	October 2007
Complete new wing construction:	March 2009
Vacate 100 & 110 Wings:	June 2009
Complete 150 Wing renovations:	June 2009
Occupy new elementary wing:	September 2009
<u>Phase 2:</u>	
Start abatement/demolition 100 & 110 Wings:	June 2009
Start new gym const. & 110 Wing renovations:	August 2009
Complete new gym const. & 100 Wing renovations:	January 2010
Move high school students:	January 2010
<u>Phase 3:</u>	
Start high school asbestos abatement/demolition:	January 2010
Complete high school demolition:	May 2010
Start site development west:	June 2010
Complete site development:	September 2010

- Students will be accommodated within the existing and newly constructed portions of the school as required during construction. Students will not be relocated off site during the construction period. Student and staff safety and welfare are of prime importance in addition to minimizing classroom disruption during the school year.
- Updates on progress will be regularly communicated to the board.
- Updates on construction and related issue will be regularly communicated to the parent community and student body through the school's line of communication.
- Preliminary site plans are attached (Appendix I).

LMT:ct

Appendix I: Schematic Design Plans



VICTORIA SCHOOL
of PERFORMING and VISUAL ARTS

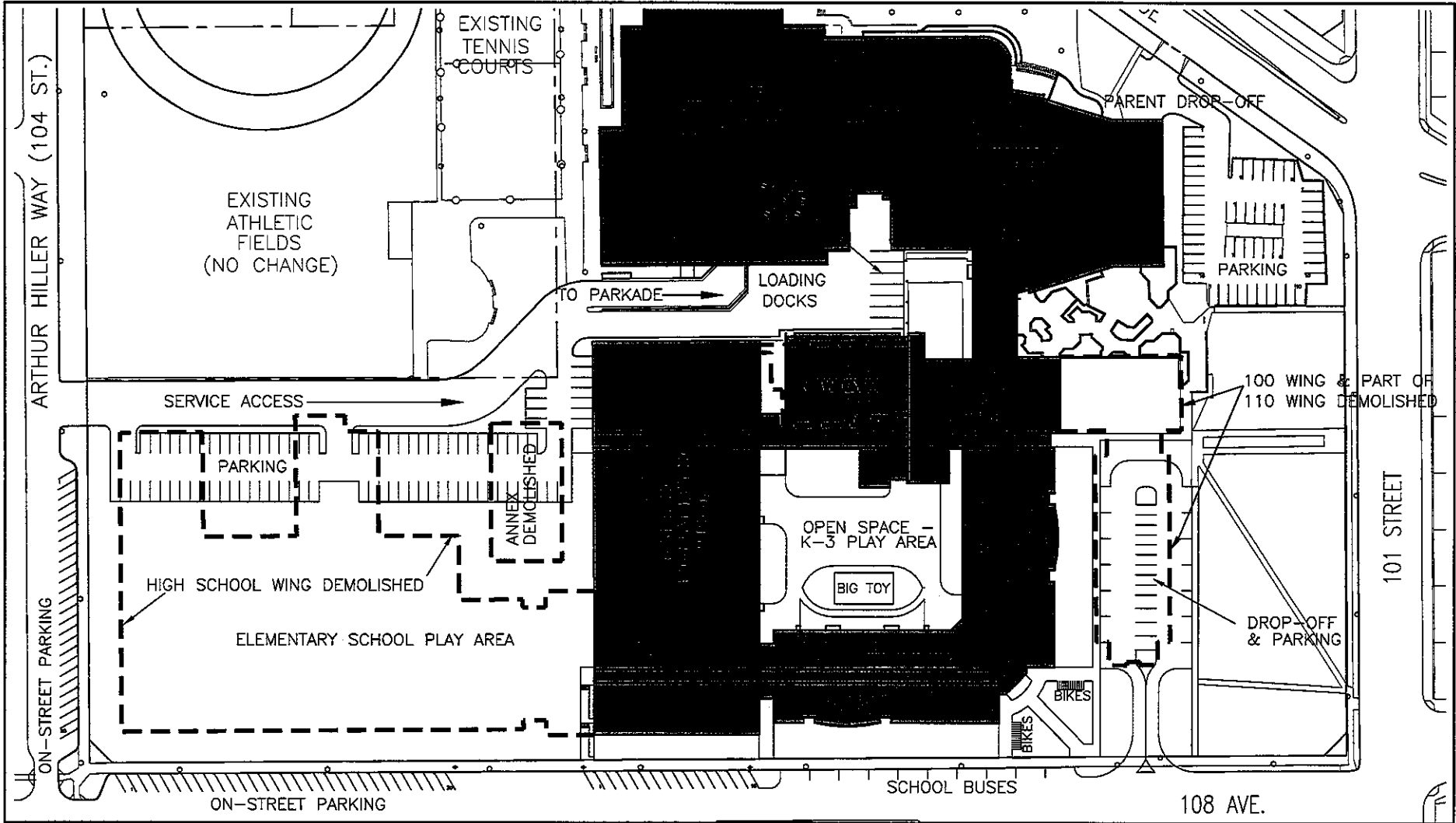
EDMONTON
PUBLIC
SCHOOLS

ARCHITECTS
& PLANNERS

Associate Architect
G
PETER G. OEDYNAC
ARCHITECT LTD.

ARCHITECT

SCHEMATIC DESIGN			
EXISTING SITE			
PROJECT NO.	DATE	SCALE	SHEET
26333	AUG. 2006	1:1000	A01



7

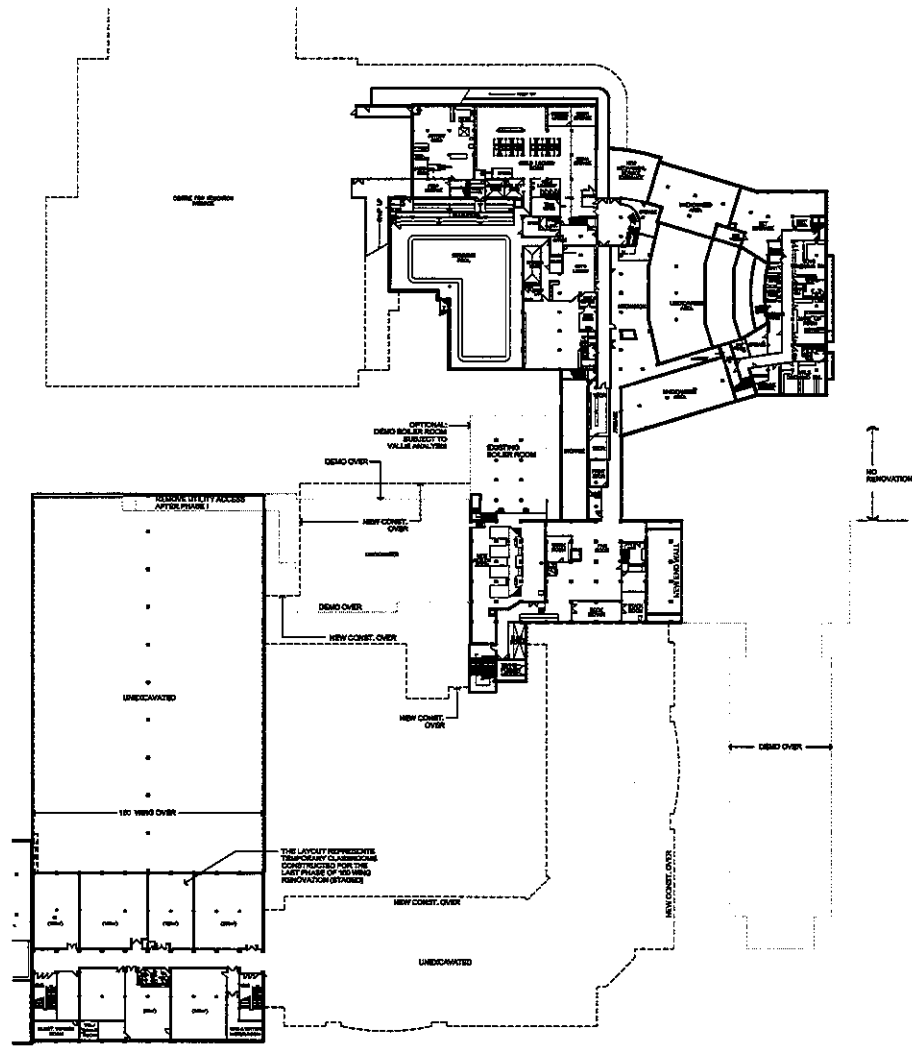


VICTORIA SCHOOL
of PERFORMING and VISUAL ARTS



Associate Architect	

SCHEMATIC DESIGN			
NEW SITE			
PROJ# 28333	DATE AUG. 2006	SCALE 1:1000	SHEET A02



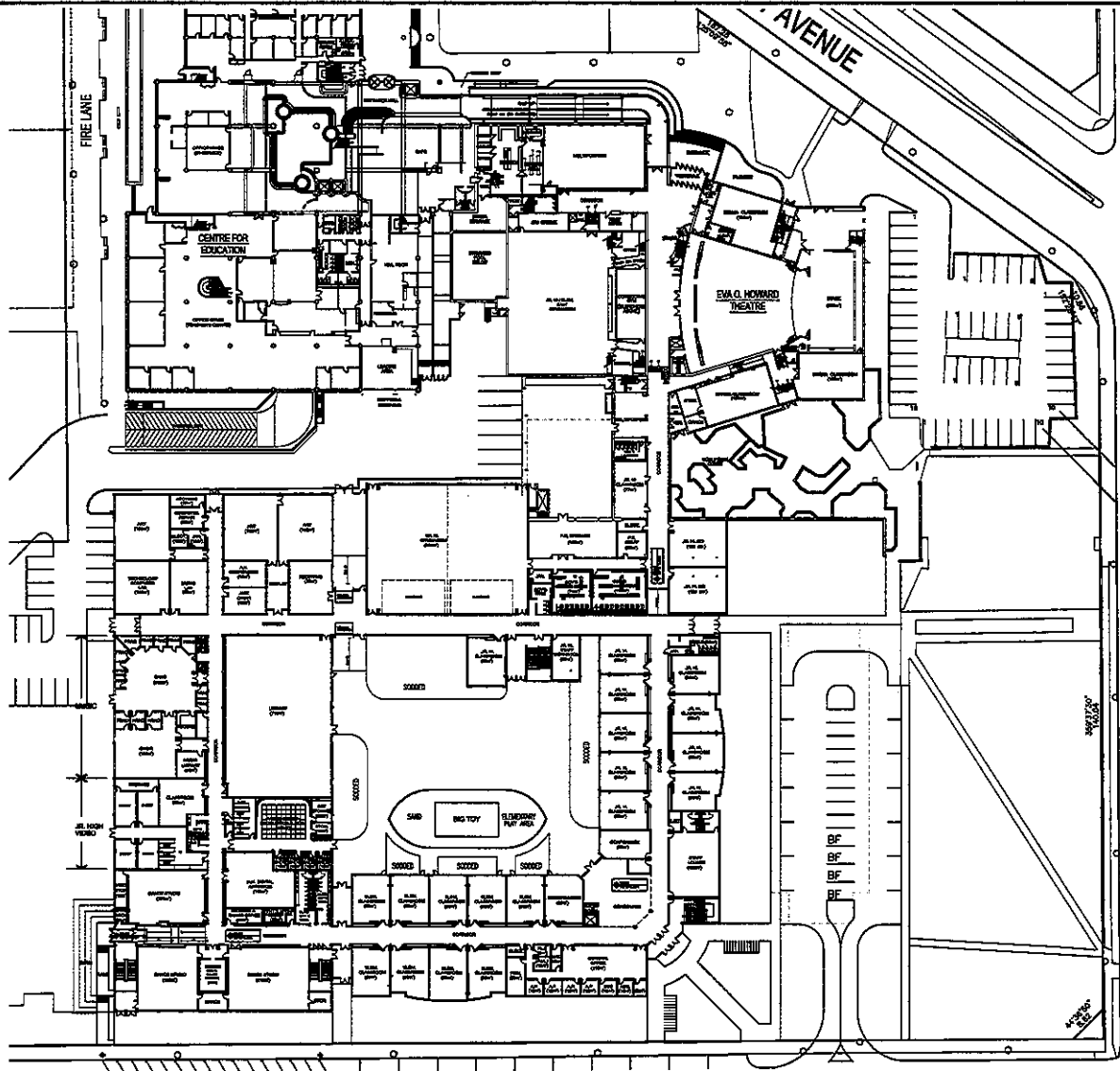
VICTORIA SCHOOL
of PERFORMING and VISUAL ARTS

EDMONTON
PUBLIC
SCHOOLS

BLANK
PINDER
ARCHITECTS
& PLANNERS

Associate Architect
G
PETER G. OLDYNEC
ARCHITECT LTD.

PROJECT TITLE			
SCHEMATIC DESIGN			
DRAWING TITLE			
BASEMENT PLAN			
PROJECT NO.	DATE	SCALE	SHEET
26333	AUG. 2006	1:1000	A03



VICTORIA SCHOOL
of PERFORMING and VISUAL ARTS



EDMONTON
PUBLIC
SCHOOLS



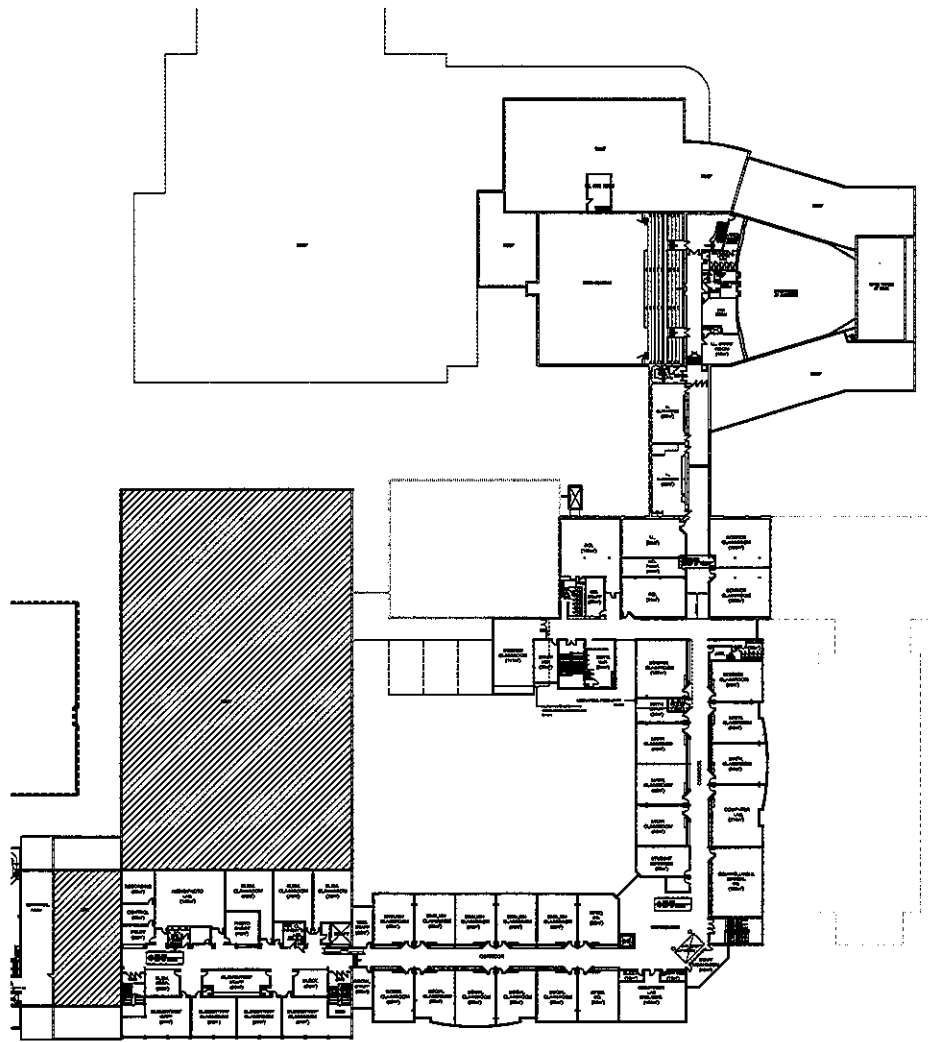
ARCHITECTS
& PLANNERS

Associate Architect



PETER & ODEYVIC
ARCHITECT LTD.

SCHEMATIC DESIGN			
PROJECT TITLE MAIN FLOOR PLAN			
PROJECT NO. 26333	DATE AUG. 2006	SCALE 1:1000	SHEET NO. A04



VICTORIA SCHOOL
of PERFORMING and VISUAL ARTS



Schematic Design			
PROJECT NO.			DRAWING TITLE
26333			SECOND FLOOR PLAN
DATE	SCALE	SHEET	
AUG. 2006	1:1000	A05	