

EDMONTON PUBLIC SCHOOLS

September 11, 2007

TO: Board of Trustees

FROM: E. Schmidt, Superintendent of Schools

SUBJECT: Proposed Annual Implementation Plan 2007-08

ORIGINATOR: T. Parker, Assistant Superintendent

RESOURCE

STAFF: Will Deys, Josephine Duquette, Michael Ediger, Leanne Fedor, Andrea Furness, Kerry-Ann Kope, Roland Labbe, Sandra Mason, Bob Morter, Lorne Parker, Amy-Irene Seward, Cindy Skolski

RECOMMENDATION

That the proposed Annual Implementation Plan 2007-08 be approved by Board.

* * * * *

On May 22nd the Board of Trustees approved the district's Ten-Year Facilities Plan 2008-2017. A draft of the district's Annual Implementation Plan 2007-08 was attached that identified proposed schools for review under year one, years two or three, and years four to ten. In this process, parents and communities are provided with additional advance notice when a school and/or a greater community of schools' sustainability is in question. Schools that have been identified for review this September are listed in Appendix I. This list has been updated from the information presented on May 22, 2007.

The Annual Implementation Plan provides the rationale that is used to determine which schools are proposed to be reviewed and provides a detailed timeline for the process, reporting, and engagement opportunities for staff, parents, and community representatives (Appendix II). As well, a process chart has been developed indicating public engagement processes for school communication (Appendix III). The process and timelines for schools that underwent previous reviews and will undergo continuation reviews is also provided (Appendix IV).

Sustainability reviews can result in school closure, program changes, or maintenance of the status quo.

School Closures

- whole school or program closure
- adjusting grade configuration by moving grades in or out of a school*

Program Change

- re-designating attendance area or alternative program boundaries
- adjustment of enrolment limits
- creating multi-campus sites by combining individual schools

Status Quo

*The moving out of three or more consecutive grades entirely is considered a school closure according to the School Act.

Process for Selecting Schools for Year One Sustainability Reviews 2007-08

Individual school profiles were developed and benchmarks were applied to indicate each school's viability. The information in the school profiles represents a snapshot in time and was based on 2007-08 existing data as of August 22, 2007. The student enrolment benchmark has been further refined to include student enrolment at entry level in accordance with the Alberta Commission on Learning Class Size Guidelines (ACOL). It should be noted that the district deleted the facility condition benchmark as it was determined that the audit score was out of date and inaccurate in a large number of cases. The facility condition benchmark was not used during the initial sort to identify schools to be reviewed in 2006-07 although there was a perception by the public that this benchmark was of high importance in determining which schools were reviewed.

Appendix IV is a draft list of schools proposed to be reviewed in year one, years two or three, and years four to ten. The schools identified in years one to ten of the Ten-Year Facilities Plan were analyzed to determine priority schools for year one of the Annual Implementation Plan. For each school, the benchmarks were compared to the actual school numbers to determine how close the numbers were to meeting or exceeding the benchmarks for each category of the profile. For example, if the enrolment of an elementary school was 89 and it is compared to the benchmark of 140, the difference is 51.

This initial sort was calculated numerically based on the current situation at each school and compared to the benchmarks identified on the individual school profiles as developed and agreed upon through public consultation. This provided a defensible list of priorities and was based on a rationale that is consistent for each school. Student enrolment benchmarks and student population benchmarks had been compared; the differences were added together resulting in a final rating. The student space and cost benchmarks were not included in the numerical based initial sort. Schools were sorted based on their rating into year one, years two or three, and years four to ten.

To determine which schools would be proposed for review in year one, September 2007 enrolment counts were further analyzed to verify any significant changes and impacting factors such as a change in actual enrolment and if the school's relationship with the benchmarks had changed from May.

Rationale for Selecting Schools Proposed for Year One Sustainability Reviews

The list of schools identified in the May 22nd draft Annual Implementation Plan to be reviewed in year one has been shortened. The schools removed from the draft list for year one reviews and moved to years two or three are closer to the benchmarks than the school identified for September 2007 year one reviews. After careful consideration, the administration determined that with current resources the district would be unable to complete formal reviews this year for Glengarry School's regular program and the Greater Hardisty Area which includes Capilano, Fulton Place Gold Bar, and Hardisty schools.

Glengarry School is a dual track elementary school for both regular programming and the Arabic Bilingual Program. While enrolment in the Arabic Bilingual Program has experienced steady growth over the last five years, enrolment in the regular program has been in decline at all grade levels. For the 2007-08 school year, regular programming will not be offered in kindergarten, grades one and two. The district will continue to monitor the regular program at Glengarry School.

Schools in the Greater Hardisty Area were identified to be reviewed together. During the months of May and June, informal discussions took place with parents, community members and staff from schools in the Greater Hardisty Area. Dialogue will continue throughout the 2007-08 school year.

The following schools have been proposed for sustainability reviews or continuation of the current reviews: Coronation, Grovenor, Horse Hill, Ritchie, and Woodcroft schools. Sustainability Reviews were initiated at Coronation and Grovenor schools in 2006-07 resulting in a continuation review for the current school year. A sustainability review was initiated for Ritchie School in conjunction with Mill Creek School in 2006-07. It is proposed that Ritchie School be reviewed independently this year. A map identifying the schools proposed to be reviewed in year one is provided (Appendix V).

Individual School Profiles for each of the schools proposed for review are attached (Appendix VI). Summarized data on each of the schools proposed for review is as follows:

Coronation School (Continuation Review 2007-08)

- Enrolment data as of September 4, 2007 indicates that 96 students are currently enrolled in the school, including 70 in the regular program, 8 in the International Baccalaureate Middle Years programme, and 18 in the behaviour learning assistance programs. Current enrolment indicatives that there are 12 kindergarten students in the school.
- 30 per cent overall decline in student enrolment from 2002
- 29 per cent of the elementary students living in the Coronation attendance area attend Coronation School
- 55 per cent of student space occupied according to ACOL school capacity
- 44 per cent of student space is funded
- Six other schools in the area that may have declining enrolment with available learning space

Grovenor School (Continuation Review 2007-08)

- Enrolment data as of September 4, 2007 indicates that 88 students are currently enrolled in the school, including 79 in the regular program and 9 in the behaviour and learning assistance program. Current enrolment indications that there are 16 kindergarten students in the school.
- 27 per cent overall decline in student enrolment from 2002
- 34 per cent of the elementary students living in the Grovenor attendance area attend Grovenor School
- 45 per cent of student space occupied according to ACOL school capacity
- 37 per cent of student space is funded
- Four other schools in the area that may have declining enrolment with available learning space

Horse Hill School (Sustainability Review 2007-08)

- Enrolment data as of September 4, 2007 indicates that 84 students are currently enrolled in the school, including 14 kindergarten students.
- 49 per cent overall decline in student enrolment from 2002
- 50 per cent of the elementary students living in the Horse Hill attendance area attend Horse Hill School
- 19 per cent of student space occupied according to ACOL school capacity
- 18 per cent of student space is funded
- there are no schools with available space in the area

Ritchie School (Continuation Review 2007-08)

As of June 27th a total of seven students were pre-enrolled in the grade seven regular program. Parents expressed a desire to remove students from the grade seven regular program at Ritchie School and relocated them to another Edmonton Public School for the 2007-08 school year. Students were provided assistance in enrolling at another school of their choice provided the school did not have closed boundaries and the student met any entrance criteria.

- Enrolment data as of September 4, 2007 indicates that 93 students are currently enrolled at the school, including 53 regular program students (grades eight and nine) and 40 students in the Literacy and Opportunity programs
- 25 per cent overall decline in student enrolment from 2002
- 18 per cent of the junior high students living in the Ritchie attendance area attend Ritchie School
- 10 per cent of student space occupied according to ACOL school capacity
- 10 per cent of student space is funded
- Five other schools in the area that may have declining enrolment with available learning space

Woodcroft School (Sustainability Review 2007-08)

- Enrolment data as of September 4, 2007 indicates that 89 students are currently enrolled at the school, including 75 in the regular program and 14 in the Behavior and Learning Assistance program. Current enrolment indicates that there are 12 kindergarten students in the school
- 27 per cent overall decline in student enrolment from 2002
- 45 per cent of the elementary students living in the Woodcroft attendance area attend Woodcroft School
- 50 per cent of student space occupied according to ACOL school capacity
- 40 per cent of student space is funded
- Four other schools in the area that may have declining enrolment with available learning space

CS:cp

Appendix I	Proposed List of Schools to be Reviewed in Years One to Ten
Appendix II	Timelines – Annual Implementation Plan for 2007-2008
Appendix III	Flow Chart – Parent and Public Engagement Process for Sustainability Reviews
Appendix IV	Timelines – Continuation Reviews for 2007-2008
Appendix V	Map of Schools Proposed to be Reviewed in Year One
Appendix VI	Individual School Profiles for Schools Proposed to be Reviewed in Year One

SCHOOLS PROPOSED FOR SUSTAINABILITY REVIEWS

The following schools have been identified in the Ten-Year Facilities Plan 2008-2017 for Sustainability Reviews under year one, years two or three, and years four to ten.

Year 1	Years 4 to 10
Coronation (continuation)	Athlone
Grovenor (continuation)	Avonmore
Horse Hill	Britannia
Ritchie	Clara Tyner
Woodcroft	Donnan
	Eastwood
Year 2 or 3	Ekota
Allendale	Kameyosek
Beacon Heights	King Edward
Inglewood	Lauderdale
James Gibbons	Lee Ridge
Laurier Heights	McArthur
Lawton	McCauley
Malmo	Menisa
R. J. Scott	Parkallen
Rio Terrace	Parkdale
Riverdale	Princeton
Sherwood	Richard Secord
<u>Greater Hardisty Area</u>	Rideau Park
Capilano	Spruce Avenue
Fulton Place	Talmud Torah (junior high program)
Gold Bar	L'Académie Vimy Ridge Academy
Hardisty	Waverley
	Westglen
	Youngstown

TIMELINES - ANNUAL IMPLEMENTATION PLAN FOR 2007-2008

The Annual Implementation Plan will be implemented in a yearly cycle, beginning in May and ending thirteen months later in June as follows.

1. May 2007 to September 2007

- *School profiles updated with current enrolment data*
- *Annual Implementation Plan developed and approved by the Board of Trustees*
 - *Plan focuses on facility strategies for each school indicated in the Ten-Year Facilities Plan for year one*
 - *Plan indicates which schools with a one to three year facility strategy will be examined in year one*
 - *Plan shows annual timeline for reviews to be undertaken at each school*
- *Schools for which the recommended strategy is Sustainability Review commence data gathering*
- *Meetings with Schools to initiate Sustainability Reviews*

May 22, 2007

Prepare draft version of the Annual Implementation Plan for inclusion in Ten-Year Facilities Plan and presentation to the Board of Trustees

June to September 2007

Prepare Proposed 2007-2008 Annual Implementation Plan

- Renew School Profiles
- Identify Facility Strategy for each school in the district
- Prepare school information for Sustainability Reviews
- Develop parameters and scenarios based on student accommodation needs

June 13, 2007

Superintendent Meets with Principals

- Engage principals of schools proposed for year one sustainability reviews

September 11, 2007

Public Board Meeting: Recommendation Report on the Proposed 2007-2008 Annual Implementation Plan

September 12, 2007

Initiate Sustainability Reviews

- Contact principals of schools approved for year one sustainability reviews
- Engagement of school staff – information sharing and discussion of parameters and scenarios developed based on student accommodation needs
- Engagement with individual school communities – information sharing and discussion of parameters and scenarios developed based on student accommodation needs
- Notify City Council and City administration of schools under review

2. November / December 2007

- *Status Report about Sustainability Reviews presented as information to public board and provides interim information regarding the reviews in progress*
- *The Status Report is not intended to:*
 - *provide outcomes or recommendations*
 - *provide feedback from parents and community until public engagement meetings are completed*
 - *initiate a school closure process*

December 11, 2007

Public Board Meeting: Information Report on the Annual Implementation Plan – Sustainability Reviews and Continuation Reviews

3. January / February 2008

- *Recommendations arising from sustainability reviews that require Board approval (for example, beginning a school or program closure process) presented at public board*
- *Recommendations that require the superintendent approval (for example, boundary or program changes) approved by the superintendent*

January 15, 2008

Public Board Meeting: Recommendation Report on the Proposed Outcomes of Year One Sustainability Reviews

- *For each school involved in a year one sustainability review, prepare an information report on the proposed outcome, and where a school closure is indicated prepare a recommendation report to begin the school closure process*
- *Initiate the school closure process in accordance to the School Act and the *Alberta Closure of School Regulation* if any schools are recommended for closure*

January to March 2008

Implementation of Approved Outcomes of Year One Sustainability Reviews

- *If required, School Closure public meetings are held in accordance with the School Act and the *Alberta Closure of Schools Regulation**

4. March / April 2008

- *Recommendations that require board approval (for example, school closure) approved by public board*
- *Recommendations that require superintendent approval (for example, new district sites for programs or moving programs) approved by the superintendent*
- *Individual Schools Profiles updated*
- *Schools identified for inclusion in district Three-Year Capital Plan for any facility alterations*

March 25, 2008

Public Board Meeting: Recommendation Reports on the Closure of School(s) if any identified

March 31 to April 4

Spring Break

April 7, 2008

Start of the Pre-enrolment Process for the 2008-2009 School Year

May 2008

Update Individual School Profiles

- Commence preparation of the district's annual Three-Year Capital Plan and Ten-Year Facilities Plan
- Request principals to consult on Local Conditions with parents, staff and communities and submit via web-survey, for insertion into the 2008-2009 Individual School Profiles

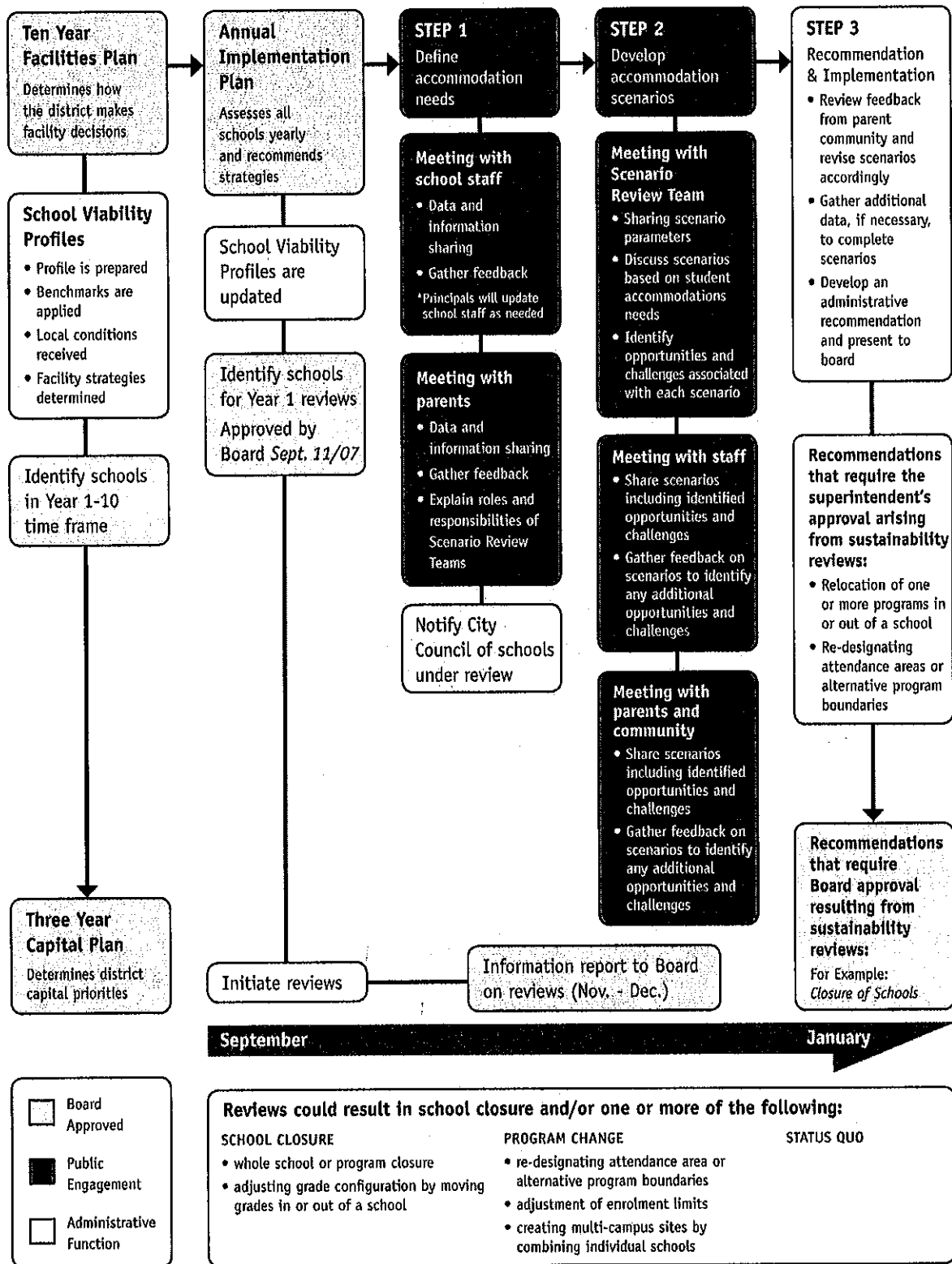
5. May / June 2008

- *Three-Year Capital Plan and Ten-Year Facilities Plan revised and approved by the board of trustees*
- *School Councils update Local Conditions in school profiles*

May 2008

Public Board Meeting: Recommendation Reports on the Three-Year Capital Plan 2009-2012, and the Ten-Year Facilities Plan 2009-2018

Parent and Public Engagement Process for Sustainability Reviews



TIMELINES – CONTINUATION REVIEWS FOR 2007-2008

A Continuation Review is completed on schools that underwent a Sustainability Review the previous year. The district will monitor changes in student enrolment, student population and benchmarks which would indicate a potential change in a school's long-term viability. The timelines for a Continuation Review are as follows:

1. May to September 2007

- *Ten-Year Facilities Plan developed and approved by the Board of Trustees*
 - *Draft Annual Implementation Plan prepared for inclusion in the district's Ten-Year Facilities Plan*
 - *Plan identifies which schools will be reviewed in year one as a Continuation Review from the 2006-07 review period*
- *School profiles updated with current data*
- *Local Conditions, as received from schools, are also updated by school councils*
 - *Request principals to consult on Local Conditions with parents, staff and communities and submit via web-survey, for insertion into the 2007-08 Individual School Profiles*
- *Commence data gathering for schools identified in year one*

May 22, 2007

Prepare draft version of the Annual Implementation Plan for inclusion in Ten-Year Facilities Plan and presentation to the Board of Trustees

June to September 2007

Prepare Proposed 2007-2008 Annual Implementation Plan

September 11, 2007

Public Board Meeting: Recommendation Report on the Proposed 2007-2008 Annual Implementation Plan

September 12, 2007

Initiate Continuation Reviews

- **Contact principals of schools approved for Continuation Reviews**

2. September/October/November 2007

- **Engagement with school staff and parents**
 - **compile and communicate current 2007-08 school data through newsletter**
 - **meeting with school council to discuss changes in student enrolment, student population, and benchmarks**
 - **continue to monitor changes in student enrolment, student population and benchmarks**
 - **evaluate success of implementing new program initiatives or educational focus at school e.g. IBMY, music focus**

3. November / December 2007

- *Status Report about Continuation Review presented as information to public board and provides interim information regarding the reviews in progress.*
- *The Status Report is not intended to:*
 - *provide outcomes or recommendations*
 - *provide feedback from parents and community*
 - *initiate a school closure process*

December 11, 2007

Public Board Meeting: Information Report on the Status Report on Annual Implementation Plan – Continuation Reviews

4. January / February 2008

- *Recommendations arising from Continuation Reviews that require Board approval (for example, beginning a school or program closure process) presented at public board*
- *Recommendations that require the superintendent approval (for example, boundary or program changes) approved by the superintendent*

January 15, 2008

Public Board Meeting: Recommendation Report on the Proposed Outcomes of Year One Continuation Reviews

- *For each school involved in a year one Continuation Review, prepare an information report on the proposed outcome and where a school closure is indicated prepare a recommendation report to begin the school closure process for public board*
- *Initiate the school closure process in accordance to the School Act and the *Alberta Closure of School Regulation* if any schools are recommended for closure*

January to March 2008

Implementation of Approved Outcomes of Year One Continuation Reviews

- *School Closure public meetings, if required, in accordance with the School Act and the *Alberta Closure of Schools Regulation**

5. March / April 2008

- *Recommendations that require board approval (for example, school closure) approved by public board*
- *Recommendations that require superintendent approval (for example, new district sites for programs or moving programs) approved by the superintendent*
- *Individual School Profiles updated*
- *Schools identified for inclusion in district Three-Year Capital Plan for any facility alterations*

March 25, 2008

Public Board Meeting: Recommendation Reports on the Closure of School(s) if any identified

March 31 to April 4, 2008

Spring Break

April 7, 2008

Start of the Pre-enrolment Process for the 2008-2009 School Year

May 2008

Update Individual School Profiles

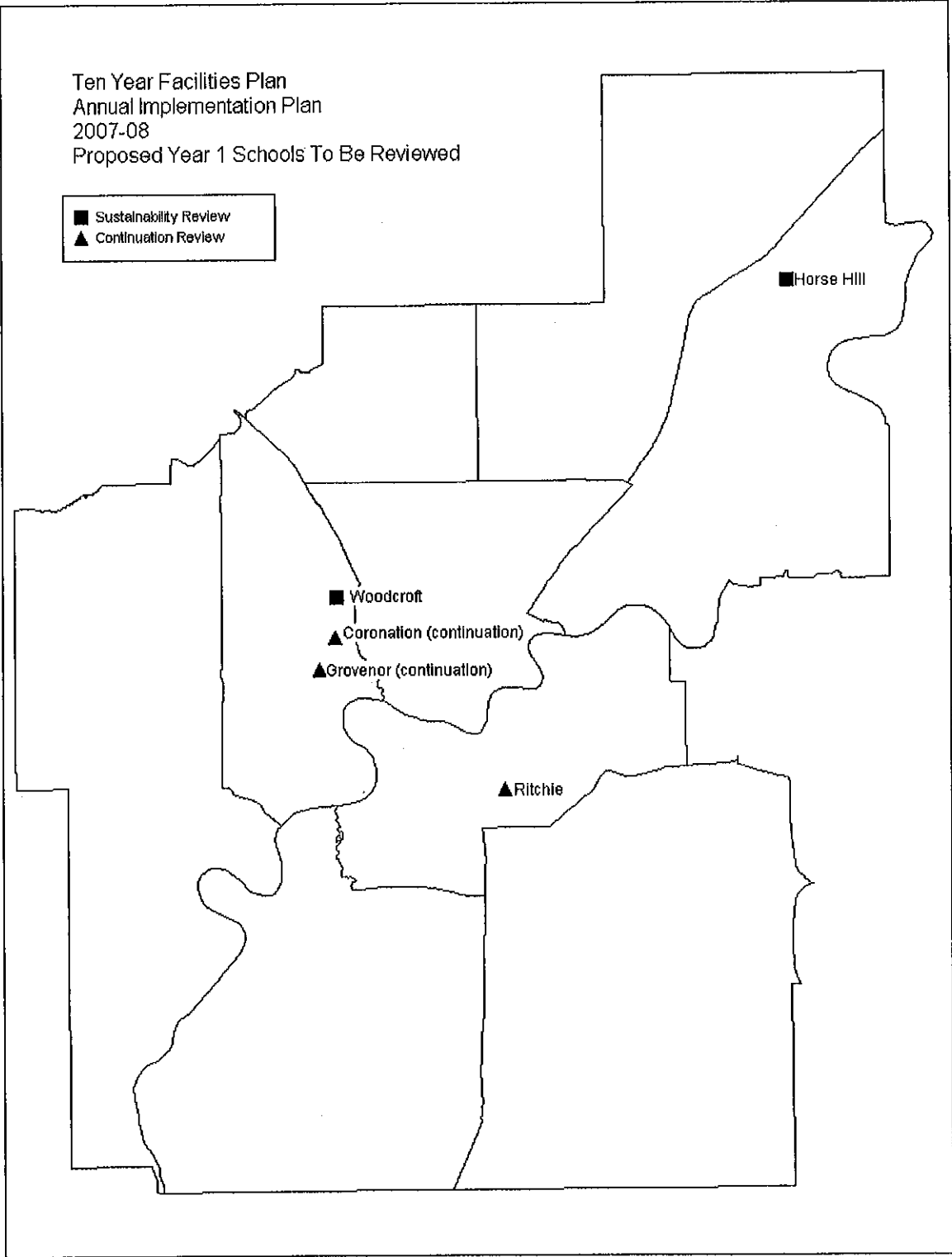
- Commence preparation of the district's annual Three-Year Capital Plan and Ten-Year Facilities Plan
- Request principals to consult on Local Conditions with parents, staff and communities and submit via web-survey, for insertion into the 2008-2009 Individual School Profiles

6. May / June 2008

- *Three-Year Capital Plan and Ten-Year Facilities Plan revised and approved by the board of trustees*
- *School Councils update Local Conditions in school profiles*

May 2008

Public Board Meeting: Recommendation Reports on the Three-Year Capital Plan 2009-2012, and the Ten-Year Facilities Plan 2009-2018



Prepared by Planning, Edmonton Public Schools
July 2007

School Profile --- **DRAFT as of Sep 04, 2007**

(Generated Sep 04, 2007)

EDMONTON PUBLIC SCHOOL: Coronation – 115 – Elementary

Viability Benchmark for each category in brackets ()

STUDENT ENROLMENT 2007/08 Meets Viability Benchmark No

Number of Students Per Grade:					Elementary 96 (140)			Jr High 0 (150)			Sr High 0 (400)			TOTAL
EE	K	Gr.1	Gr.2	Gr.3	Gr.4	Gr.5	Gr.6	Gr.7	Gr.8	Gr.9	Gr.10	Gr.11	Gr.12	
0	12	11	14	10	15	15	19	0	0	0	0	0	0	96

Student Enrolment by Program: Meets Viability Benchmark No

	Regular	ALT (I.B. Mid Yrs)	District Centre	Early Ed	Total
Elementary	70 (140)	8 (140)	18	0	96

District Centre: Behaviour and Learning Assist/Opp (BLA-OPP); Behaviour and Learning Assistance (BLA)

Student Enrolment at Entry Level: Meets Viability Benchmark No

Elementary (034)		Jr High (050)		Sr High (135)	
K	Gr.1	Gr.7		Gr.10	
12	11	0		0	

Historical Enrolment:

2002	2003	2004	2005	2006	
127	116	111	91	88	30.7% Overall %Decline from 2002

EDMONTON PUBLIC SCHOOL POPULATION Meets Viability Benchmark No

176	Total Number of EPSB Elementary Students Residing in Coronation Attendance Area (280)
52	Total Number of EPSB Elementary Students Residing in Coronation Attendance Area Attending Coronation (140)

STUDENT SPACE AND COST Meets Viability Benchmark No

122	Total Number of Weighted Student Spaces
55%	Percentage of Student Space Occupied (50%)
	124.00 Amount of Unfunded Student Space
	\$56,405.12 Cost of Unfunded Student Space
220.00	ACOL School Capacity
	44% Percentage of Funded Space (50%)
0	Number of Portable Classrooms on Site

LOCATION AND ACCESSIBILITY Meets Viability Benchmark No

6	Number of EPSB Schools where student learning space is available within a 1.6 km radius (3)				
2162	Number of Unfunded Student Spaces in the Sector	WEST 1	Sector	C	Ward

Existing Leases in the School: 568114 ALBERTA LTD AND ERIN DUKE – 244 m2; 568114 ALBERTA LTD AND ERIN DUKE – 75 m2; 568114 ALBERTA LTD AND ERIN DUKE – 169 m2;

Transportation:

0	Number of Students in the Attendance Area provincially eligible for transportation services living more than 2.4km from the designated school
---	-----------------------------------------------------------------------------------------------------------------------------------------------

Facility Information and Condition

1953	Year School was Built	390	Provincial Facility Audit Score (700)
	Facility Re-Audit Score	Marginal	District Capital Inspection (Acceptable, Good, Excellent)

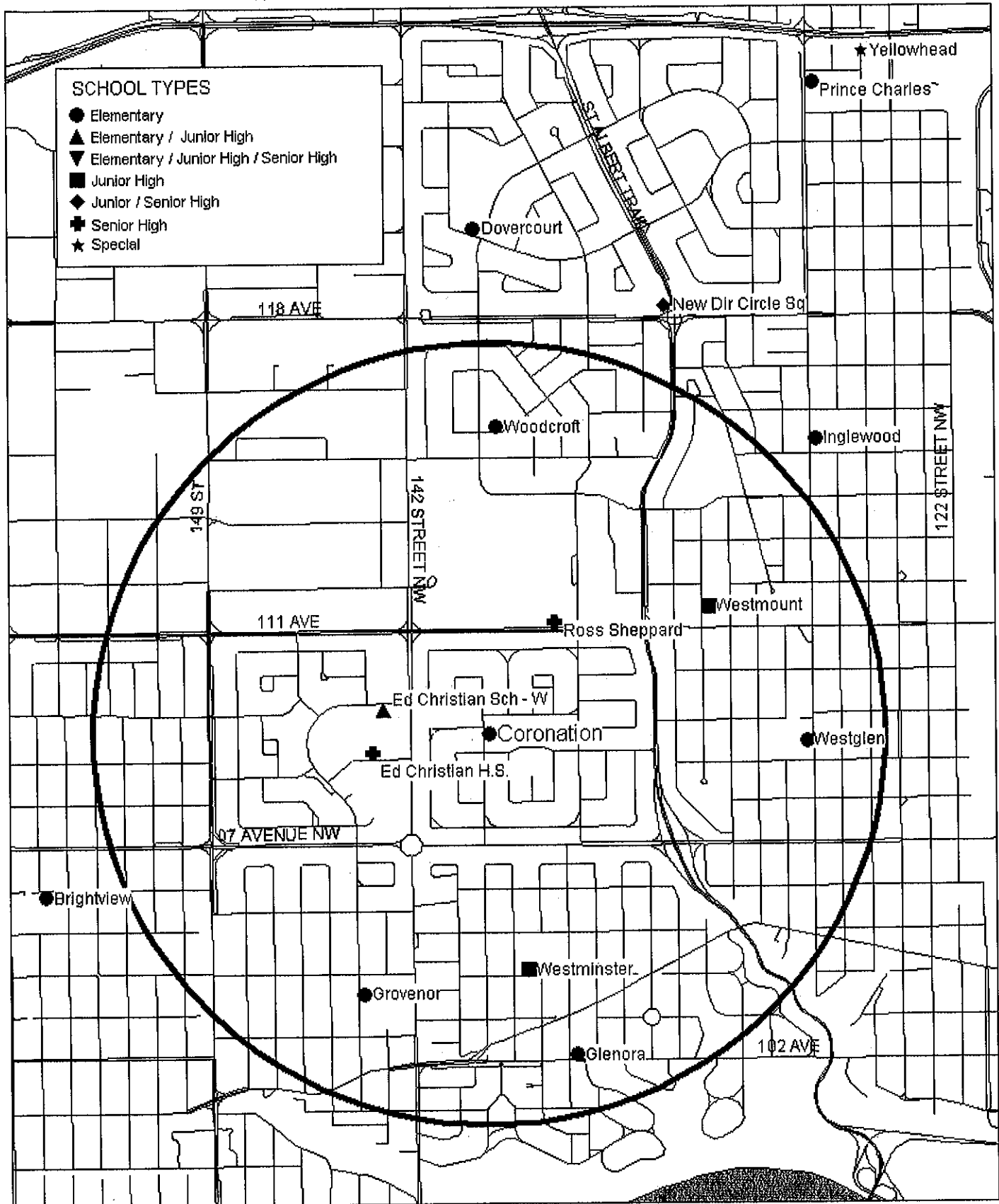
Local Conditions:

Coronation School has an active, supportive parent group and community. There is a strong focus on academic success and citizenship. This is supported through a technology lab, technology in the classroom and library, an extensive collection of children's literature and research material, an outdoor classroom with all flora native to Alberta, and within walking distance – the Telus World of Science. We have the IB Middle Years Program in grade 6 and French as a second language is offered to the students in grades 4-6. Student leadership is emphasized through a variety of leadership opportunities such as student announcers, patrols, secretaries, referees, Club Moo volunteers, and a computer team.

Recommended Facility Strategy and Timeline

Sustainability Review – Year: 1

1.6 km Radius Around Coronation School



Prepared by Planning, Edmonton Public Schools
Coronation 1.6 km radius:WOR
August 2007

School Profile -- **DRAFT** as of Sep 04, 2007

(Generated Sep 04, 2007)

EDMONTON PUBLIC SCHOOL: Grovenor - 129 - Elementary

Viability Benchmark for each category in brackets ()

STUDENT ENROLMENT 2007/08												Meets Viability Benchmark		No
Number of Students Per Grade:					Elementary 88 (140)			Jr High 0 (150)			Sr High 0 (400)			
EE	K	Gr.1	Gr.2	Gr.3	Gr.4	Gr.5	Gr.6	Gr.7	Gr.8	Gr.9	Gr.10	Gr.11	Gr.12	TOTAL
0	16	17	10	13	6	17	9	0	0	0	0	0	0	88

Student Enrolment by Program:					Meets Viability Benchmark		No
	Regular	District Centre	Early Ed	Total			
Elementary	79 (140)	9	0	88			

District Centre: Behaviour and Learning Assistance (BLA)

Student Enrolment at Entry Level:					Meets Viability Benchmark		No
Elementary (034)		Jr High (050)		Sr High (135)			
K	Gr.1	Gr.7		Gr.10			
16	17	0		0			

Historical Enrolment:

2002	2003	2004	2005	2006	
103	89	87	86	75	27.2% Overall %Decline from 2002

EDMONTON PUBLIC SCHOOL POPULATION		Meets Viability Benchmark		No
135	Total Number of EPSB Elementary Students Residing in Grovenor Attendance Area (280)			
46	Total Number of EPSB Elementary Students Residing in Grovenor Attendance Area Attending Grovenor (140)			

STUDENT SPACE AND COST				Meets Viability Benchmark	No
108	Total Number of Weighted Student Spaces				
45%	Percentage of Student Space Occupied (50%)	152.00	Amount of Unfunded Student Space		
		\$69,141.76	Cost of Unfunded Student Space		
240.00	ACOL School Capacity	37%	Percentage of Funded Space (50%)		
0	Number of Portable Classrooms on Site				

LOCATION AND ACCESSIBILITY		Meets Viability Benchmark		No
4	Number of EPSB Schools where student learning space is available within a 1.6 km radius (3)			
2162	Number of Unfunded Student Spaces in the Sector	WEST 1	Sector	C Ward
Existing Leases in the School: 799505 ALBERTA LTD. AND NORWANDA PARAS - 171.7 m2; GROVENOR OUT OF SCHOOL CARE SOCIETY - 87.3 m2; FIRST DISCOVERIES PRESCHOOL SOCIETY - 84.4 m2;				

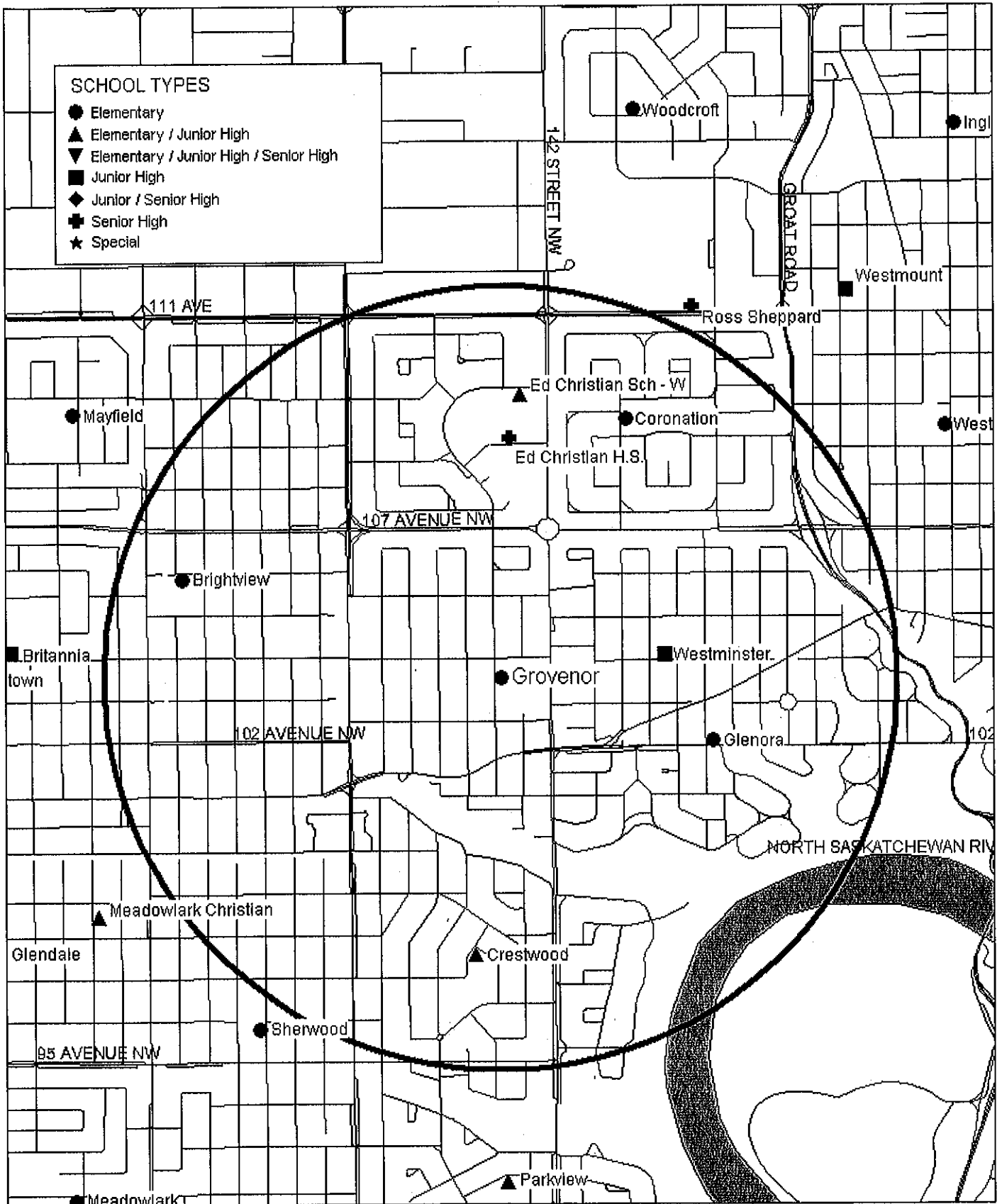
Transportation:	
0	Number of Students in the Attendance Area provincially eligible for transportation services living more than 2.4km from the designated school

Facility Information and Condition	
1949	Year School was Built
500	Provincial Facility Audit Score (700)
	Facility Re-Audit Score
Marginal	District Capital Inspection (Acceptable, Good, Excellent)

Local Conditions:
 Strong, involved School Council, many of whom are also active Community League members. Urban renewal in the Grovenor community that has two community skating rinks on site including a change building and a multi-purpose hall. School grounds include an up to date playground, large play area with soccer fields, baseball diamond and basketball area. Strong curb appeal with inviting park setting at the front of the school. Refurbished library with over 8000 current books in inventory. Balanced Literacy programming school-wide Spanish as a second language programming grades 3-6. FM system in all classrooms including the music room and gymnasium. computer lab upgraded in 2005 wheelchair accessible no junior high to share playground with partnerships with university, public library, seniors groups etc. Close proximity to museum, science center, legislature grounds and river valley

Recommended Facility Strategy and Timeline
 Sustainability Review - Year: 1

1.6 km Radius Around Grovenor School



Prepared by Planning, Edmonton Public Schools
 Grovenor 1.6 km radius.wor
 August 2007

School Profile --- **DRAFT** as of Sep 04, 2007

(Generated Sep 04, 2007)

EDMONTON PUBLIC SCHOOL: Horse Hill - 567 - Elementary

Viability Benchmark for each category in brackets ()

STUDENT ENROLMENT 2007/08												Meets Viability Benchmark		
												No		
Number of Students Per Grade:					Elementary 84 (140)			Jr High 0 (150)			Sr High 0 (400)			
EE	K	Gr.1	Gr.2	Gr.3	Gr.4	Gr.5	Gr.6	Gr.7	Gr.8	Gr.9	Gr.10	Gr.11	Gr.12	TOTAL
0	14	12	13	13	13	11	8	0	0	0	0	0	0	84

** Full Day Kindergarten

Student Enrolment by Program:					Meets Viability Benchmark		
					No		
	Regular	District Centre	Early Ed	Total			
Elementary	84 (140)	0	0	84			

District Centre:

Student Enrolment at Entry Level:				Meets Viability Benchmark		No
Elementary (034)		Jr High (050)		Sr High (135)		
K	Gr.1	Gr.7		Gr.10		
14	12	0		0		

Historical Enrolment:

2002	2003	2004	2005	2006			
173	131	118	84	88	49.1% Overall %Decline from 2002		

EDMONTON PUBLIC SCHOOL POPULATION		Meets Viability Benchmark	No
142	Total Number of EPSB Elementary Students Residing in Horse Hill Attendance Area (280)		
72	Total Number of EPSB Elementary Students Residing in Horse Hill Attendance Area Attending Horse Hill (140)		

STUDENT SPACE AND COST				Meets Viability Benchmark	No
86	Total Number of Weighted Student Spaces				
19%	Percentage of Student Space Occupied (50%)		376.00	Amount of Unfunded Student Space	
			\$171,034.88	Cost of Unfunded Student Space	
460.00	ACOL School Capacity		18%	Percentage of Funded Space (50%)	
0	Number of Portable Classrooms on Site				

LOCATION AND ACCESSIBILITY		Meets Viability Benchmark				Yes
0	Number of EPSB Schools where student learning space is available within a 1.6 km radius (3)					
1465	Number of Unfunded Student Spaces in the Sector	NORTHEAST	Sector	B	Ward	

Existing Leases in the School:

Transportation:	
117	Number of Students in the Attendance Area provincially eligible for transportation services living more than 2.4km from the designated school

Facility Information and Condition

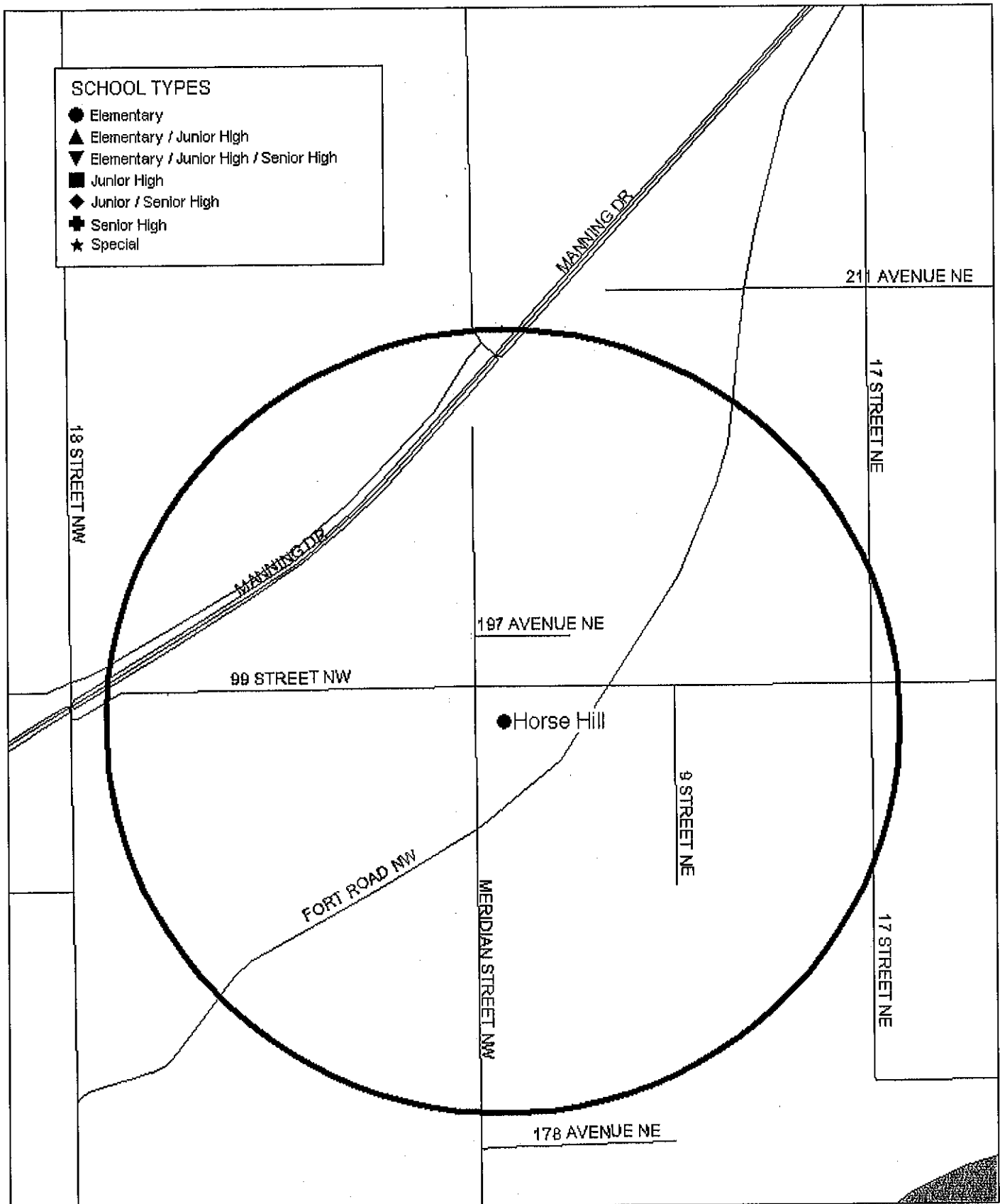
1953	Year School was Built	530	Provincial Facility Audit Score (700)
	Facility Re-Audit Score	Acceptable	District Capital Inspection (Acceptable, Good, Excellent)

Local Conditions:

Recommended Facility Strategy and Timeline

Sustainability Review - Year: 1

1.6 km Radius Around Horse Hill School



Prepared by Planning, Edmonton Public Schools
Horse Hill 1.6 km radius.wor
August 2007

School Profile -- **DRAFT** as of Sep 04, 2007

(Generated Sep 04, 2007)

EDMONTON PUBLIC SCHOOL: Ritchie - 533 - Junior High

Viability Benchmark for each category in brackets ()

STUDENT ENROLMENT 2007/08											Meets Viability Benchmark			
											No			
Number of Students Per Grade:					Elementary 0 (140)			Jr High 93 (150)			Sr High 0 (400)			
EE	K	Gr.1	Gr.2	Gr.3	Gr.4	Gr.5	Gr.6	Gr.7	Gr.8	Gr.9	Gr.10	Gr.11	Gr.12	TOTAL
0	0	0	0	0	0	0	0	11	46	36	0	0	0	93

Student Enrolment by Program:					Meets Viability Benchmark			
					No			
	Regular	District Centre	Early Ed	Total				
Junior High	53 (150)	40	0	93				

District Centre: Literacy; Opportunity

Student Enrolment at Entry Level:											Meets Viability Benchmark		No	
Elementary (034)					Jr High (050)					Sr High (135)				
K		Gr.1			Gr.7					Gr.10				
0		0			11					0				

Historical Enrolment:

2002	2003	2004	2005	2006	
186	167	137	146	139	25.3% Overall %Decline from 2002

EDMONTON PUBLIC SCHOOL POPULATION											Meets Viability Benchmark			
											No			
242	Total Number of EPSB Jr High Students Residing in Ritchie Attendance Area (300)													
45	Total Number of EPSB Jr High Students Residing in Ritchie Attendance Area Attending Ritchie (150)													

STUDENT SPACE AND COST				Meets Viability Benchmark	No
93	Total Number of Weighted Student Spaces				
10%	Percentage of Student Space Occupied (50%)	807.00	Amount of Unfunded Student Space		
		\$367,088.16	Cost of Unfunded Student Space		
900.00	ACOL School Capacity	10%	Percentage of Funded Space (50%)		
0	Number of Portable Classrooms on Site				

LOCATION AND ACCESSIBILITY											Meets Viability Benchmark			
											No			
5	Number of EPSB Schools where student learning space is available within a 1.6 km radius (3)													
3588	Number of Unfunded Student Spaces in the Sector							SOUTH CENTRAL	Sector	G	Ward			

Existing Leases in the School: EDMONTON HISPANIC BILINGUAL ASSOCIATION - 24 m2; FACILITIES MAINTENANCE - 1200 m2;

Transportation:

2	Number of Students in the Attendance Area provincially eligible for transportation services living more than 2.4km from the designated school													
---	-----------------------------------------------------------------------------------------------------------------------------------------------	--	--	--	--	--	--	--	--	--	--	--	--	--

Facility Information and Condition

1954	Year School was Built							230	Provincial Facility Audit Score (700)					
	Facility Re-Audit Score							Marginal	District Capital Inspection (Acceptable, Good, Excellent)					

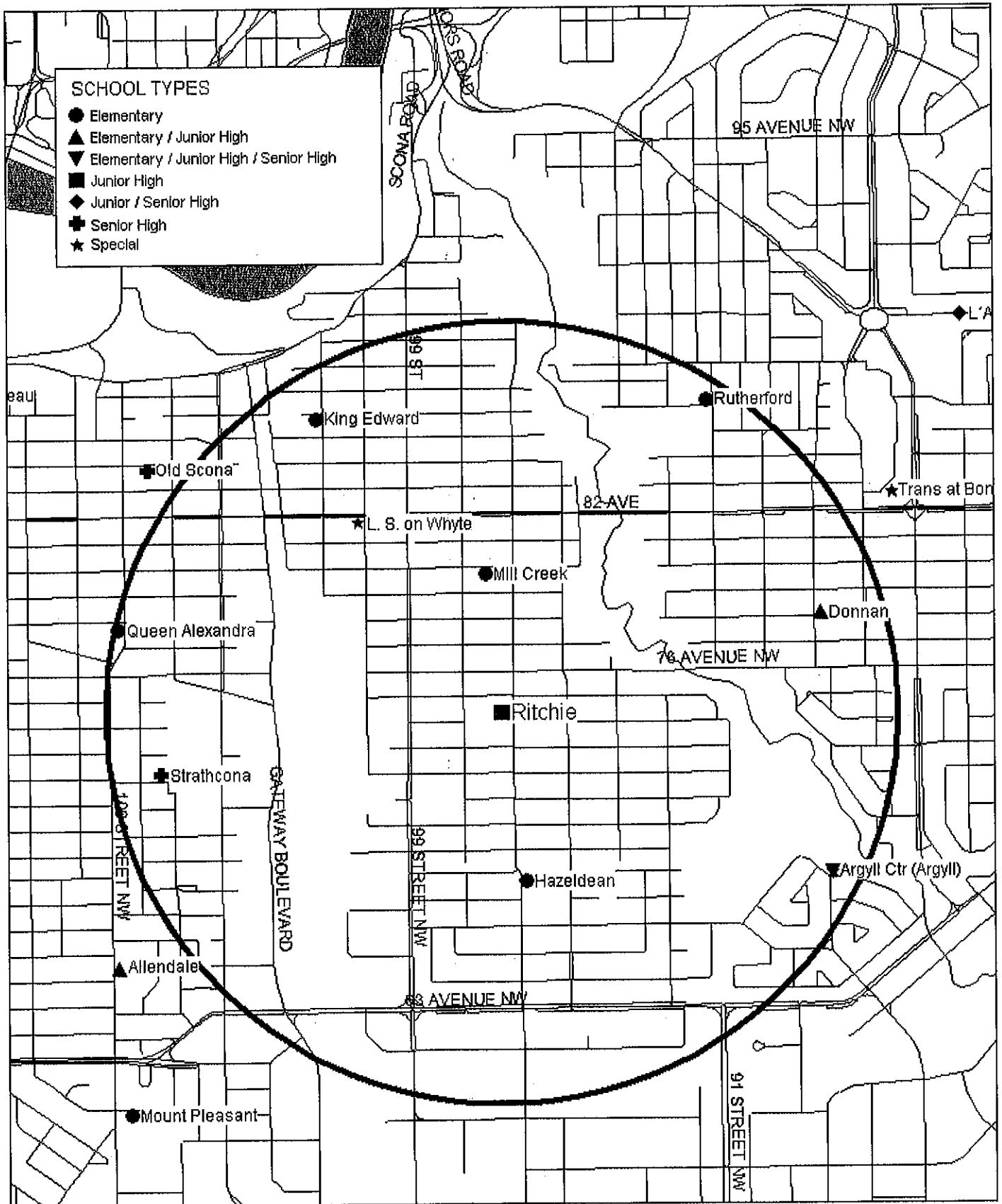
Local Conditions:

Positives: two gym spaces (one with wrestling mats), well maintained IA/Home Ec labs, large field space, science lab is well stocked and new microscopes; FM Systems; art room with kiln; wide hallways; basketball tarmac that is well used by community; some indoor lighting has been replaced; good ETS routes; ravine nearby for access to nature trails and Outdoor Ed space; easy drop off space for yellow bus
 Negatives: classrooms need to be repainted; roof is leaking; boiler is attached to old building; Old Ritchie is an eyesore of unuseable space; constant vandalism; technology requires serious upgrades and new equipment; no front entranceway; drama room requires renovation; no music program; one class per grade means students cannot be moved around or away from issues; much of school is bussed in; special needs population is higher than normal; poor ventilation; east side windows (and outdoor wood trim) need to be replaced; spotty heating; lack of custodial equipment; gym floors need to be redone; asbestos issues everywhere according to OH and S audit; small school means limited opportunity to teach different subjects

Recommended Facility Strategy and Timeline

Sustainability Review - Year: 1

1.6 km Radius Around Ritchie School



Prepared by Planning, Edmonton Public Schools
 Ritchie 1.6 km radius.wor
 August 2007

School Profile -- **DRAFT** as of Sep 04, 2007

(Generated Sep 04, 2007)

EDMONTON PUBLIC SCHOOL: Woodcroft – 183 – Elementary

Viability Benchmark for each category in brackets ()

STUDENT ENROLMENT 2007/08											Meets Viability Benchmark			No
Number of Students Per Grade:					Elementary 89 (140)			Jr High 0 (150)			Sr High 0 (400)			
EE	K	Gr.1	Gr.2	Gr.3	Gr.4	Gr.5	Gr.6	Gr.7	Gr.8	Gr.9	Gr.10	Gr.11	Gr.12	TOTAL
0	12	11	13	13	9	12	19	0	0	0	0	0	0	89

Student Enrolment by Program:					Meets Viability Benchmark		No
	Regular	District Centre	Early Ed	Total			
Elementary	75 (140)	14	0	89			

District Centre: Behaviour and Learning Assistance (BLA)

Student Enrolment at Entry Level												Meets Viability Benchmark		No
Elementary (034)				Jr High (050)				Sr High (135)						
K		Gr.1		Gr.7		Gr.10		Gr.10		Gr.10				
12		11		0		0		0		0				

Historical Enrolment:

2002	2003	2004	2005	2006	
123	106	100	89	89	27.6% Overall %Decline from 2002

EDMONTON PUBLIC SCHOOL POPULATION												Meets Viability Benchmark		No
104	Total Number of EPSB Elementary Students Residing in Woodcroft Attendance Area (280)													
47	Total Number of EPSB Elementary Students Residing in Woodcroft Attendance Area Attending Woodcroft (140)													

STUDENT SPACE AND COST				Meets Viability Benchmark	No
109	Total Number of Weighted Student Spaces				
50%	Percentage of Student Space Occupied (50%)	131.00	Amount of Unfunded Student Space		
		\$59,589.28	Cost of Unfunded Student Space		
220.00	ACOL School Capacity	40%	Percentage of Funded Space (50%)		
0	Number of Portable Classrooms on Site				

LOCATION AND ACCESSIBILITY												Meets Viability Benchmark		No
4	Number of EPSB Schools where student learning space is available within a 1.6 km radius (3)													
2162	Number of Unfunded Student Spaces in the Sector							WEST 1	Sector	C	Ward			

Existing Leases in the School: 0189 CHILDREN'S CARE LTD. – 75.3 m2; 0189 CHILDREN'S CARE LTD. – 75.3 m2; OLYMPIAN SWIM CLUB – 75.3 m2;

Transportation:

0	Number of Students in the Attendance Area provincially eligible for transportation services living more than 2.4km from the designated school													
---	-----------------------------------------------------------------------------------------------------------------------------------------------	--	--	--	--	--	--	--	--	--	--	--	--	--

Facility Information and Condition

1955	Year School was Built							690	Provincial Facility Audit Score (700)					
	Facility Re-Audit Score							Marginal	District Capital Inspection (Acceptable, Good, Excellent)					

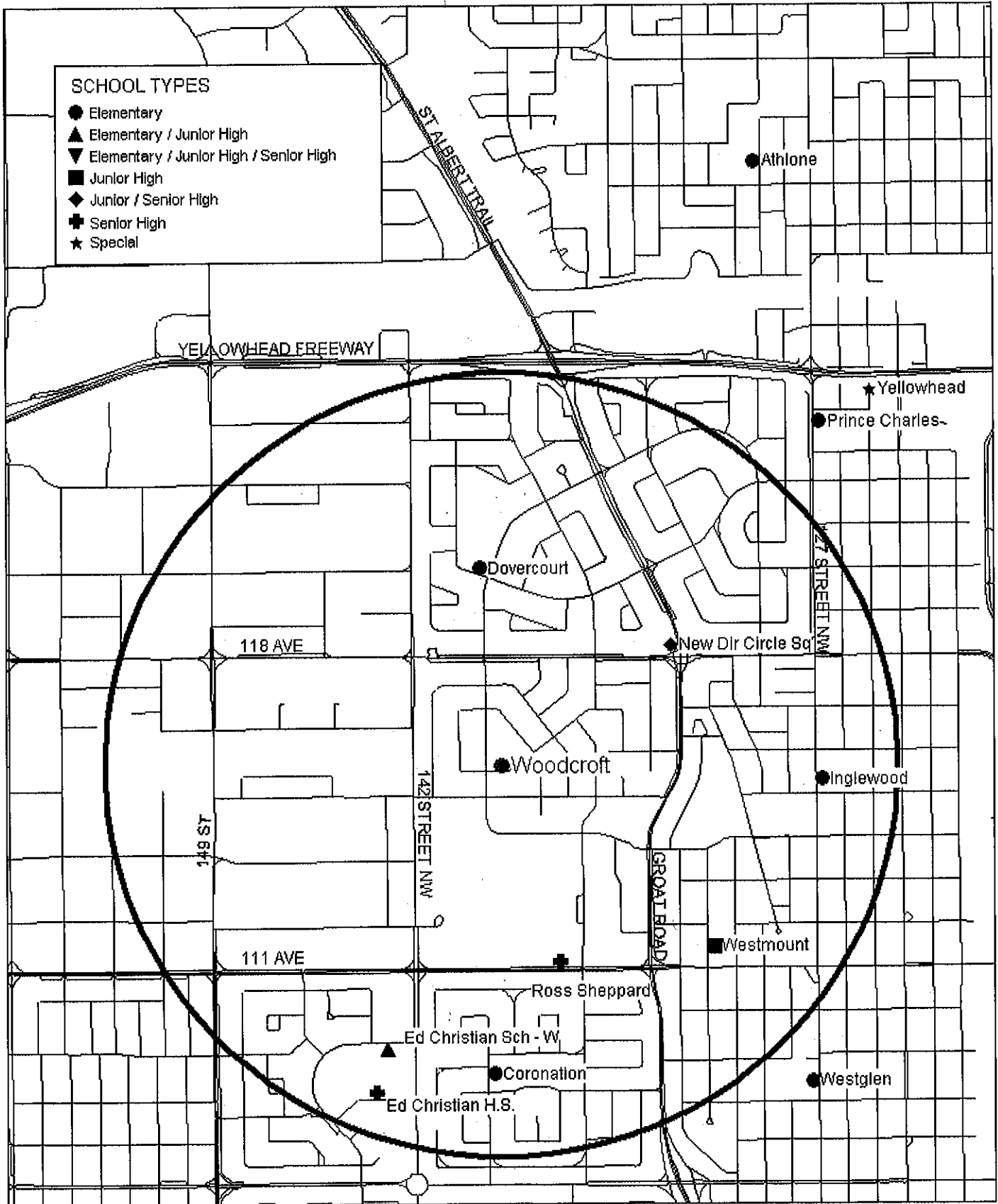
Local Conditions:

1. Woodcroft is within a few blocks of the Coronation Athletic Fields (skating arena, swimming pool, track and field, tennis courts) 2. Woodcroft school grounds (entirely EPSB property) were landscaped by the City in June 2005: 3 soccer fields were made and 2 baseball diamonds; trees and tree beds were planted; a walking path is planned for the field perimeter. 3. The school is within a few blocks of the Woodcroft Public Library, the Woodcroft Public Health Clinic, and the Westmount Community Police Station. 4. The Telus World of Science is within school community boundaries and, thus, walking distance. 5. Community League facilities (which serve as our Emergency relocation point) are a few blocks away. 6. Woodcroft is a quiet neighbourhood bordered by major transportation roadways: Groat Road (E), 111 Avenue (S), 142 St. (W), and 118 Ave. (N).

Recommended Facility Strategy and Timeline

Sustainability Review – Year: 1

1.6 km Radius Around Woodcroft School



Prepared by Planning, Edmonton Public Schools
Woodcroft 1.6 km radius.wor
August 2007