

EDMONTON PUBLIC SCHOOLS

October 8, 2002

TO: Board of Trustees

FROM: A. McBeath, Superintendent of Schools

SUBJECT: Fourth Quarterly Report: June 1, 2002 to August 31, 2002

ORIGINATOR: A. Habinski, Executive Director School and District Services

RESOURCE

STAFF: Diane Brunton, Rick Craig, Mary-Ellen Deising, Mike Falk, Brian Fedor,
Dennis Huculak, Les McElwain, Dean Power, Linda Wiens

INFORMATION

The purpose of the quarterly report is to provide trustees with timely monitoring information pertaining to board governance and accountability. Appendix I provides detailed information regarding results and activities in the areas of students, staff and physical assets in the district. The information compares data from the fourth quarter of 2001-2002 to the same period in 2000-2001.

LW: DB

APPENDIX I: - Fourth Quarterly Report: June 1, 2002 to August 31, 2002

FOURTH QUARTERLY REPORT JUNE 1, 2002 to AUGUST 31, 2002

A. STUDENTS

1. ENROLMENT

The reported district enrolment on June 30, 2002 totaled 80,042 students. This represents a net decrease of 1,592 students or 2.0% from the September 30, 2001 enrolment.

Student enrolment distributions for June 30, 2002 and comparisons with September 30, 2001, September 30, 2000 and June 30 2001, are shown below:

	2000-2001		2001-2002	
	Sept. 30	June 30	Sept. 30	June 30
Kindergarten	5,218	5,167	5,101	5,031
Elementary	30,625	30,547	31,226	30,955
Junior High	15,576	15,492	15,984	15,843
High School	18,699	17,482	18,701	17,458
Special Needs	7,608	7,177	7,598	7,464
E.S.L.	1,954	2,095	1,771	2,105
Institutions	1,267	1,184	1,253	1,186
District total	<u>80,947</u>	<u>79,144</u>	<u>81,634</u>	<u>80,042</u>
CHANGE		-1,803 (-2.2%)		-1,592 (-2.0%)

2. SUMMER SCHOOL ENROLMENT

Summer School enrolment figures for 2002 totaled 5,495 students enrolled in 26,796 credits. This compares to 5,137 students enrolled in 24,781 credits in 2001. (These numbers are based on course completions.)

3. MOBILITY

	2000-2001	2001-2002
	June	June
Transfers between schools	230	282
Transfers out of district	162	159
New registrations	109	81
Withdrawals from schools	91	142

4. ATTENDANCE

Month	STUDENT ATTENDANCE			
	Elem. & Jr. High		High School	
	2000-01	2001-02	2000-01	2001-02
June	92.7%	93.0%	87.0%	84.3%

STUDENTS (Continued)

5. STUDENT SUSPENSIONS

(a) Number of Suspensions:

School Type	June '01- Aug.'01	June '02- Aug.'02	Differences
Elementary	169	211	+42
Elementary - Junior High	76	70	-6
Junior High	319	335	+16
Senior High	140	167	+27
Institutional Services	8	7	-1
TOTALS	712	790	+78

(b) Distribution of Suspensions by School Type (June '02 - August '02)
excluding Institutional Services/Alternative sites

Number of Suspensions	Number of Schools by Type								Total # of Schools	
	Elementary		El-Jr High		Junior High		Senior High		00/01	01/02
	00/01	01/02	00/01	01/02	00/01	01/02	00/01	01/02		
0 suspensions	82	61	4	5	2	1	2	2	90	69
1-5 suspensions	47	62	7	5	7	10	7	4	68	81
6-10 suspensions	5	7	4	7	6	8	2	4	17	26
>10 suspensions	2	2	2	0	15	11	7	8	26	21

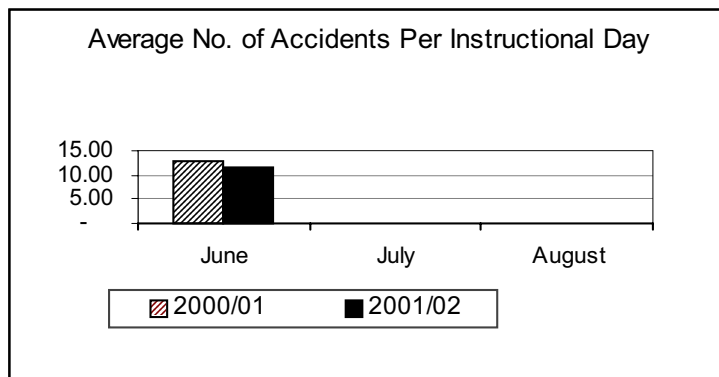
Notes regarding changes in school categories for the 2001-02 school year.

Alex Taylor, Idylwyld, Queen Mary Park, and Westview Village were removed from the Elementary category.

6. STUDENT EXPULSIONS

	June '01 – Aug. '01	June '02 – Aug. '02
(a) from the District	0	0
(b) from a School	18	22
Total	18	22

7. ACCIDENTS TO STUDENTS DURING INSTRUCTIONAL DAYS



B. STAFF

	<u>2000-01</u>			<u>2001-02</u>		
	<u>Sept. 30</u>	<u>May 31</u>	<u>Aug. 31</u>	<u>Sept. 30</u>	<u>May 31</u>	<u>Aug. 31</u>
1. SCHOOLS						
Teaching						
Elementary	1,879	1,899	1,900	1,842	1,844	1,847
Elementary/Junior High	376	376	375	455	467	467
Elementary/Jr.High/Sr.High	216	216	216	257	260	263
Junior High	666	666	667	643	640	641
Junior/Senior High	154	155	154	160	161	160
Senior High	740	755	753	789	796	795
Bennett Centre	1	1	1	2	2	2
Institutions*	130	136	136	122	139	140
Temporary Replacements	30	53	43	40	66	56
TOTAL (F.T.E.)	4,192	4,257	4,245	4,310	4,375	4,371
Non-Teaching						
Exempt	179	226	223	109	133	131
Support	1,092	1,222	1,203	1,170	1,324	1,311
Custodial	489	503	501	496	500	497
TOTAL (F.T.E.)	1,760	1,951	1,927	1,775	1,957	1,939
2. CENTRAL SERVICES						
Teaching Staff	92	92	92	101	97	98
Exempt	282	311	313	316	324	323
Support	160	179	185	181	184	185
Maintenance (incl. casual staff)	261	235	256	259	252	264
Custodial	34	40	37	38	44	43
TOTAL C.S. STAFF (F.T.E.)	829	857	883	895	901	913
3. METRO COMMUNITY COLLEGE						
Teaching Staff	5.0	5.0	5.0	7.0	6.9	6.7
Exempt	14.5	15.7	16.9	18.7	20.0	20.0
Support	25.0	27.6	25.1	25.1	31.9	29.9
Custodial	4.4	4.6	5.4	5.4	4.7	4.7
TOTAL (F.T.E.)	48.9	52.9	52.4	56.2	63.5	61.3
4. DISTRICT TOTALS						
Teaching	4,289.0	4,354.0	4,342.0	4,418.0	4,478.9	4,475.7
Non-Teaching	2,540.9	2,763.9	2,765.4	2,618.2	2,817.6	2,808.6
TOTAL	6,829.9	7,117.9	7,107.4	7,036.2	7,296.5	7,284.3

*Institutions includes all locations funded at actual cost. / + Increase due to adjustments of FTE's from Schools to Institutions

B. STAFF (Continued)

** CENTRAL SERVICES BREAKDOWN						
	Teacher	Exempt	Support	Maint.	Custodial	Total
<u>September, 2001</u>						
Instructional & Curric. Support	89.092	94.068	82.800	--	25.000	290.960
School & District Services	5.500	184.200	83.690	259.000	12.100	544.490
Student Achievement	1.000	2.000	2.000	--	--	5.000
Superintendent's Area	5.500	35.600	12.500	--	1.000	54.600
Total September, 2001	101.092	315.868	180.990	259.000	38.100	895.050
<u>May, 2002</u>						
Instructional & Curric. Support	85.161	100.468	85.228	---	28.000	298.857
School & District Services	5.500	186.900	84.571	251.800	14.600	543.371
Student Achievement	1.020	2.000	2.000	--	--	5.020
Superintendent's Area	5.500	34.600	12.500	--	1.000	53.600
Total May, 2002	97.181	323.968	184.299	251.800	43.600	900.848
<u>August, 2002</u>						
Instructional & Curric. Support	85.861	99.668	82.600	---	26.000	294.129
School & District Services	5.500	187.900	87.571	263.500	15.600	560.071
Student Achievement	1.000	2.000	2.000	--	--	5.000
Superintendent's Area	5.500	33.600	12.500	--	1.000	52.600
Total August, 2002	97.861	323.168	184.671	263.500	42.600	911.800

5. LEAVES OF ABSENCE

	<u>Teaching Staff</u>		<u>Non-Teaching Staff</u>	
	<u>Aug/01</u>	<u>Aug./02</u>	<u>Aug/01</u>	<u>Aug./02</u>
(a) Maternity	82	75	29	36
(b) Personal	238	385	114	143
(c) Workers' Compensation	0	0	12	22
(d) Extended Disability	170	154	97	108
(e) Prof. Improvement Leave	25	24	0	0
(f) Exchange	3	6	0	0
(g) Secondment	31	26	0	0
(h) Secondment to Edm.Public	1	0	2	2
(i) Deferred Salary Leave	5	8	1	0
TOTAL LEAVES	555	678	255	311

6. FUTURE SECONDMENTS

	<u>Teaching Staff</u>		<u>Non-Teaching Staff</u>	
	<u>Aug./02</u>		<u>Aug./02</u>	
Secondments from EPSB	2		0	
Extensions of Secondments	8		0	
Secondments to EPSB	0		0	
Ext.of Secondments to EPSB	0		0	

7. FUTURE EXCHANGES

Exchanges from EPSB	2	0
Ext.of Secondments fr. EPSB	0	0

B. STAFF (Continued)**8. LOST TIME CLAIMS (All Staff)**

Injury	<u>June-Aug 2000-2001</u>	<u>Jun-Aug. 2001-2002</u>
(a) Head/Neck/Eyes	3	2
(b) Hand/Finger/Wrist	4	3
(c) Shoulder/Arm/Elbow	3	8
(d) Trunk	1	3
(e) Back	4	5
(f) Leg/Knee	4	4
(g) Ankle/Foot	4	6
(h) Multiple Injuries	5	6
(i) Other	0	0
TOTAL	<u>28</u>	<u>37</u>

C. SECURITY

1. INCIDENTS OF BREAK AND ENTER

	June - August 2000 – 2001	June - August 2001 – 2002
a. Break and Enter	10	11
b. Apprehensions	8	7

Break and enters occurred at Assumption Academy, Glengarry, Keheewin, M.E. Lazerte, McKay Avenue (Archives and Museum), McNally, Queen Elizabeth (2), Ross Sheppard, T.D. Baker and Victoria School.

2. INCIDENTS OF VANDALISM

	June - August 2000 – 2001	June - August 2001 – 2002
a. Reported Incidents of Vandalism	124	123
b. Repair Costs	\$30,155	\$40,642

3. RESTITUTION RECEIVED

During the period June 1, 2002 to August 31, 2002 \$300 restitution was received for damages incurred through vandalism.

D. CONSTRUCTION

2002 Major Maintenance Plan (MMP)

Projects in the 2002 MMP are undertaken from April 1, 2002 to March 31, 2003.

The Block Grant BQRP allocation for the 2002 plan is \$5,879,003. Approximately 15% of the projects are completed and 35% of the projects are in the construction phase.

2001/2002 Capital Plan

Amiskwacy Academy Gym Addition – The walls and roof are complete. Construction is proceeding on both the gym addition and associated work within the main building. Anticipated completion is November 2002.

Eastwood / Parkdale / Spruce Avenue Upgrades – Project plans and specifications are complete. Construction has begun. The targeted completion date is December 2002.

George P. Nicholson School – The children commenced classes on September 3, 2002 as scheduled. Construction is proceeding in the south portion of the school and YMCA area. Interior improvements within the CHA area are expected to commence shortly. Gymnasium and overall completion is expected November 2002.

Grandview Heights Addition and Modernization – The construction manager is Clark Builders. Construction is proceeding and is on schedule. The renovations are scheduled to be completed October 2002. New construction is scheduled to be completed November 2002.

J. Percy Page TeleLearning – Subtrade tendering is complete. Tenders received were in excess of budget and project funding is being reviewed. The target opening is for the first term of 2004 (September).

Jackson Heights Neighbourhood School – This facility is a repeat of the George H. Luck and Michael A. Kostek design. Construction is nearing substantial completion. Painting and floor finishes application progressing. Landscaping is underway. Asphalt parking and play areas are complete. School opening is targeted for November 4, 2002.

Jasper Place Modernization – The school and architectural consultants are completing the design development. Cavan Contractors Ltd. is the construction manager. Selective demolition is expected to commence November 2002. Tendering is expected in January 2003 with renovations expected to commence in February 2003.

D. CONSTRUCTION (Continued)

John A. McDougall Modernization – Work commenced in the basement (Phase I) in June 2002. Phase I is behind schedule due to deteriorated existing sewer lines in the basement. The overall anticipated completion is August 2003.

Kildare Addition and Modernization – Pentagon Structures Ltd. commenced construction on July 3, 2002. Major portions of the asbestos removal were completed and the entire roof was replaced during the summer. The classrooms in the circular portion of the school were upgraded and ready for school on September 3, 2002. Grade beams were completed on the four-classroom addition. The addition is scheduled for completion December 31, 2002 and the interior renovations are scheduled for completion April 11, 2003.

McCauley Modernization – Binder Construction Limited completed the washrooms and multi-purpose rooms in the gymnasium wing and two basement classrooms in the original building. Progress of work in the basement was slowed due to the complexity of construction and the scheduling of work around asbestos removal. Mechanical systems are scheduled for completion mid October and the basement library by mid November. The third floor is in the demolition phase. The project is scheduled for completion April 2003. Three portables have been located on site to provide interim teaching space during the project.

Meyonohk Addition – The exterior site work and interior millwork and finishes are progressing. The entire project is scheduled for completion by September 20th, 2002.

Michael A. Kostek Addition – The addition is enclosed and roofed. Work is progressing on interior partitions and exterior site work. The project is scheduled for completion October 31, 2002.

Ottewell Modernization – Preliminary costing and schematic design is underway. A portion of the asbestos abatement and music room demolition work was done in the summer 2002. The overall schedule is pending.

Queen Elizabeth CTS Upgrading – Construction is underway and proceeding according to schedule. The target completion date is October 2002.

Terrace Heights Modernization – Substantial completion was given on August 15, 2002.

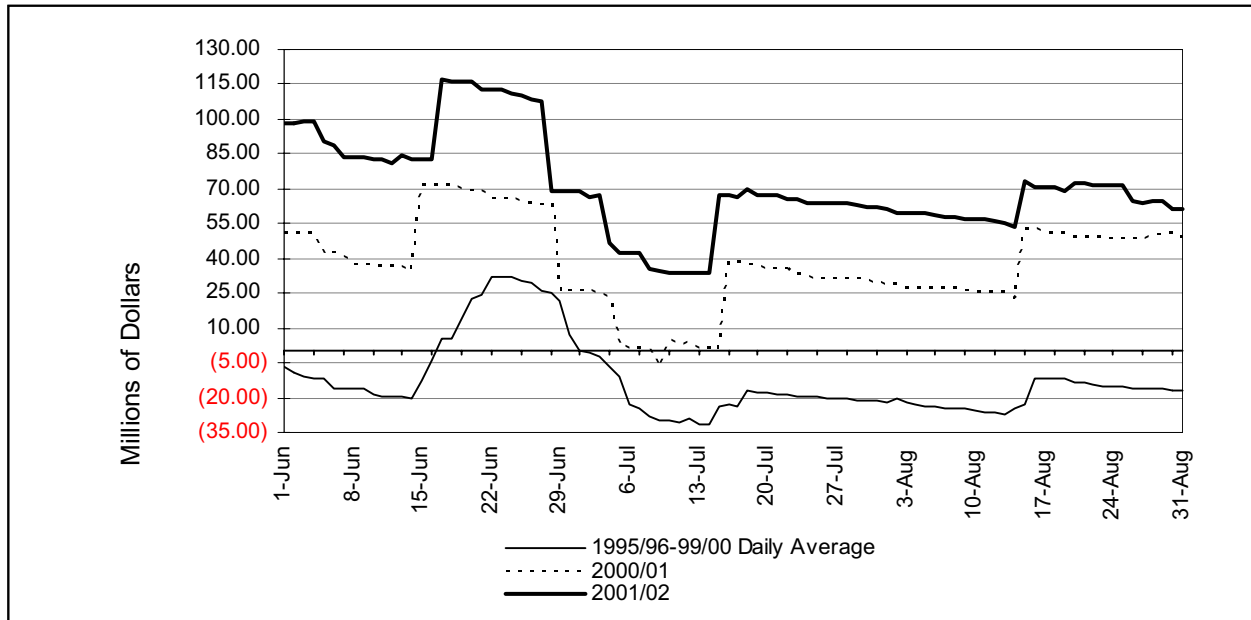
Victoria Redevelopment – Construction has been deferred; however, planning has continued.

2002/2003 Capital Plan

Winterburn Four Classroom Pod Addition – Preliminary design has been completed by Holland Roth Architects. Contract documents are being prepared for tender in late September. Construction start is anticipated by mid-October. Alberta Infrastructure has approved the Board's request to undertake the Winterburn School Addition in 2002-2003 instead of the originally approved 2003-2004.

E. FINANCE

1. CASH FLOW



2. SCHOOL EQUIPMENT AMORTIZATION

	2000-2001	2001-2002
May 31, ending balance	\$2,059,029	\$2,061,552
Amortization amount	\$1,544,228	\$673,810
Interest	\$0	\$0
Payments	(\$626,087)	(\$64,290)
August 31, ending balance	\$2,977,169	\$2,671,072

F. TRANSPORTATION

(As of June 30, 2002)

SERVICE		December 2000	March 2001	June 2001	December 2001	March 2002	June 2002
YELLOW BUS							
• Regular	K – Gr. 6 Gr. 7 – Gr. 12	1,526 728	1,529 690	1,500 628	1,654 777	1,613 747	1,610 650
• City Centre Project	K – Gr. 6 Gr. 7 – Gr. 9				114 33	124 24	124 22
	SUB TOTAL	2,254	2,219	2,128	2,578	2,508	2,406
• Programs of Choice	K – Gr. 6	1,271	1,279	1,217	1,413	1,373	1,295
• Awasis	K – Gr. 6	272	286	251	314	283	276
• Curb Service	K – Gr. 12	2,696	2,623	2,523	2,874	2,707	2,675
	YELLOW BUS TOTAL	6,493	6,407	6,119	7,179	6,871	6,652
EDMONTON TRANSIT							
• Restricted Passes	K – Gr. 12	16,408	16,390	14,156	17,387	17,237	15,067
• Awasis	Gr. 7 – Gr. 9	60	61	50	70	53	45
	EDMONTON TRANSIT TOTAL	16,468	16,451	14,206	17,457	17,290	15,112
PARENT PROVIDED							
	Kindergarten	10	9	9	9	9	9
	Special Needs (includes Early Education)	626	626	634	680	700	706
	PARENT PROVIDED TOTAL	636	635	643	689	709	715
	GRAND TOTAL	23,597	23,493	20,968	25,325	24,870	22,479

G. BUDGET AMENDMENTS TO CENTRAL DECISION UNIT BUDGETS

June 1 to August 31, 2002		
Decision Unit	Amount	Description
324 Special Projects Financing	(250,000)	Funds transferred to DU 312 Building Operations to support renovations at Centre for Education.
312 Building Operations	250,000	Funds transferred from DU 324 Special Projects Financing to support renovations at Centre for Education.
699 Bennett Centre	39,000	Supplementary allocation for 12 month head custodian unit cost for 2001-02.
327 Student Achievement Services	181,466	Funds from Holdback for Blueprints.
303 Central Operations	6,250	Supplementary allocation from Exceptional Circumstances fund. Partial compensation for cost of consultants responding to school emergency responses.
316 District Technology	36,646	Reimbursement for Learn Canada Project from Industry Canada.
337 Student Transportation	(122,750)	Transfer from Transportation Block Grant to Prince Charles to provide transportation for Awasis Program.
304 Curriculum and Programs	(20,140)	Funds transferred to Killarney to cover space utilization for ESHIP staff at Killarney and Alberta School for the Deaf.
371 Facilities	20,000	Funds from Holdback for watermain break expenditures incurred on behalf of schools. Facilities authorized to expend up to \$20,000 a year to compensate schools for unforeseen waterline break repair costs.