

EDMONTON PUBLIC SCHOOLS

November 29, 2005

TO: Board of Trustees

FROM: E. Schmidt, Acting Superintendent of Schools

SUBJECT: Update on the New High School in Riverbend /Terwillegar

ORIGINATOR: C. McCabe, Executive Director

RESOURCE

STAFF: Jenise Bidulock, Randy Billey, Josephine Duquette, Roland Labbe, Ron McGowan, John Nicoll, Larry Schwenneker

INFORMATION

Background Information

On September 16, 2005 the province announced that Edmonton Public Schools will receive \$17.3M for the new construction of a high school in South West Edmonton. The new high school in Riverbend/Terwillegar, with a capacity of 1000 students, is anticipated to open September 2008.

This report identifies and describes related information and tasks that have been undertaken in the initial processes associated with the planning and construction of this new high school.

Site Information

The district has been approached by representatives of government, the City of Edmonton and Edmonton Catholic Schools to explore interest in pursuing an attached and integrated approach for planned facilities within the Terwillegar Campus. The three major facilities planned for the Campus are a City of Edmonton recreation and leisure facility, a public high school and a catholic high school. Attached facilities have recently been realized in Alberta in Calgary, Red Deer, Sylvan Lake and Rocky Mountain House, and another project is planned for Olds. While degrees of facility integration vary in each case, community benefit was derived through land, facility and resource efficiencies. It has been suggested that a key driver to the proposed Terwillegar Campus integrated facility approach is to pursue Leadership in Energy and Environmental Design (LEED) environmental design and construction standards.

The City has instructed their architects to suspend the design process pending the outcome of further discussions with Edmonton Public Schools and Edmonton Catholic School Board. At present, the City of Edmonton does not have an approved capital budget for this project. Collaboration with the City of Edmonton and Edmonton Catholic Schools could result in a

range of options being implemented ranging from site layout to sharing of physical space. The Province has indicated to the City of Edmonton that an increased provincial contribution could be obtained if the City of Edmonton collaborates with the school districts as partners on this project. At this time Edmonton Catholic Schools does not have funding for their high school building but would like to continue to explore the potential for collaborating on this project.

Administration met with the City administration to explore how these discussions will proceed including timelines. Representatives from Edmonton Catholic Schools were present at the meeting to discuss how they may be included in the project in the future if funding is made available.

The next steps will include a review of the site development plan and the site implications, and a project timeline indicating key decision dates. The site plan (Appendix I) will need to be reviewed with the City of Edmonton in light of a possible joint facility as the current plan would see two separate sites divided by a roadway.

Designated Attendance Boundaries

Strathcona School and Harry Ainlay School will be directly impacted by the opening of the new high school in terms of changes to their designated attendance areas and student enrolment. Changes to other high school attendance areas are not planned at this time (Appendix II). A draft version of the proposed attendance boundaries has been created (Appendix III) and is currently being reviewed and analysed by Planning and high school principals. Planning continues to consult with the principals at Strathcona School and Harry Ainlay School, as well as with all high school principals before finalizing the designated attendance boundaries in South Edmonton. Changes to attendance boundaries will be finalized by March 1, 2006. The principals at Strathcona School and Harry Ainlay School will take a draft version of the proposed attendance boundary to their parent council meetings in the near future to seek further input from stakeholders. Planning will also be coordinating public consultation meetings with stakeholders in South West Edmonton to address changes to district high school designated attendance boundaries in January 2006.

Programs

Program offerings considered for the new high school at this time include a regular grade 10-12 program and High School International Baccalaureate. In addition, further inquiry is currently underway to identify the high school special education program that would best reflect and support the needs of the immediate and surrounding neighborhoods in this area of the city.

Staff in Planning continue to work with all high school principals in addressing current and future program demands on all high schools in the district as they relate to changing demands and the emergence of the new high school in South West Edmonton. (Appendix IV).

Design

In October of 2003 an Architectural Request for Proposal (RFP) was issued to select a range of architectural firms that could provide professional services to Edmonton Public Schools over the next three years. Forty architectural firms responded to the RFP and 14 architects were selected to provide architectural services to the district. The Architect for the Riverbend/Terwillegar High School will be selected from this list.

An “expression of interest” is currently being utilized by Facilities Services to select an architectural firm that possesses the skills, talents, capacity, new school experience and the vision necessary to design and construct a quality high school educational facility for Edmonton Public Schools.

The process will include a written submission from interested architectural firms who are on the district’s list of pre-qualified architectural firms previously referred to. A committee will then review the submissions and prepare a short list of architectural firms to be interviewed. This committee will then interview the firms selected in December, 2005. Based on the written submission and the interview, an architectural firm will then be selected to provide professional services to the district for this project. The selection of the architectural firm for this project should be completed by the end of December 2005.

The Client/Architect agreement will be signed once the successful architectural firm has been chosen and the district has received written Ministerial approval to proceed with this project as an Edmonton Public School’s project.

Construction Schedule

Based upon the selection of an architectural firm in January 2006, the construction schedule would tentatively be as follows:

Task	Time Frame
Programming, Schematic Design, Design Development, Construction Drawings and Specifications	February 2006-December 2006
Tender Process	January 2007
Awarding of Construction Contract	February-March 2007
Construction Period	April 2007-June 2008
Commissioning and Fit-Up	July-August 2008
School Opening	September 2008

Next Steps

The next steps associated with the planning, construction and opening of this school will include:

- Process to Name the School

The naming of this new school will be done in accordance with Edmonton Public Schools Board Policies and Regulations, Naming of Schools, FF.BP and FF.AR

(Appendix V). The name of a new school is usually determined during the design stage of the process.

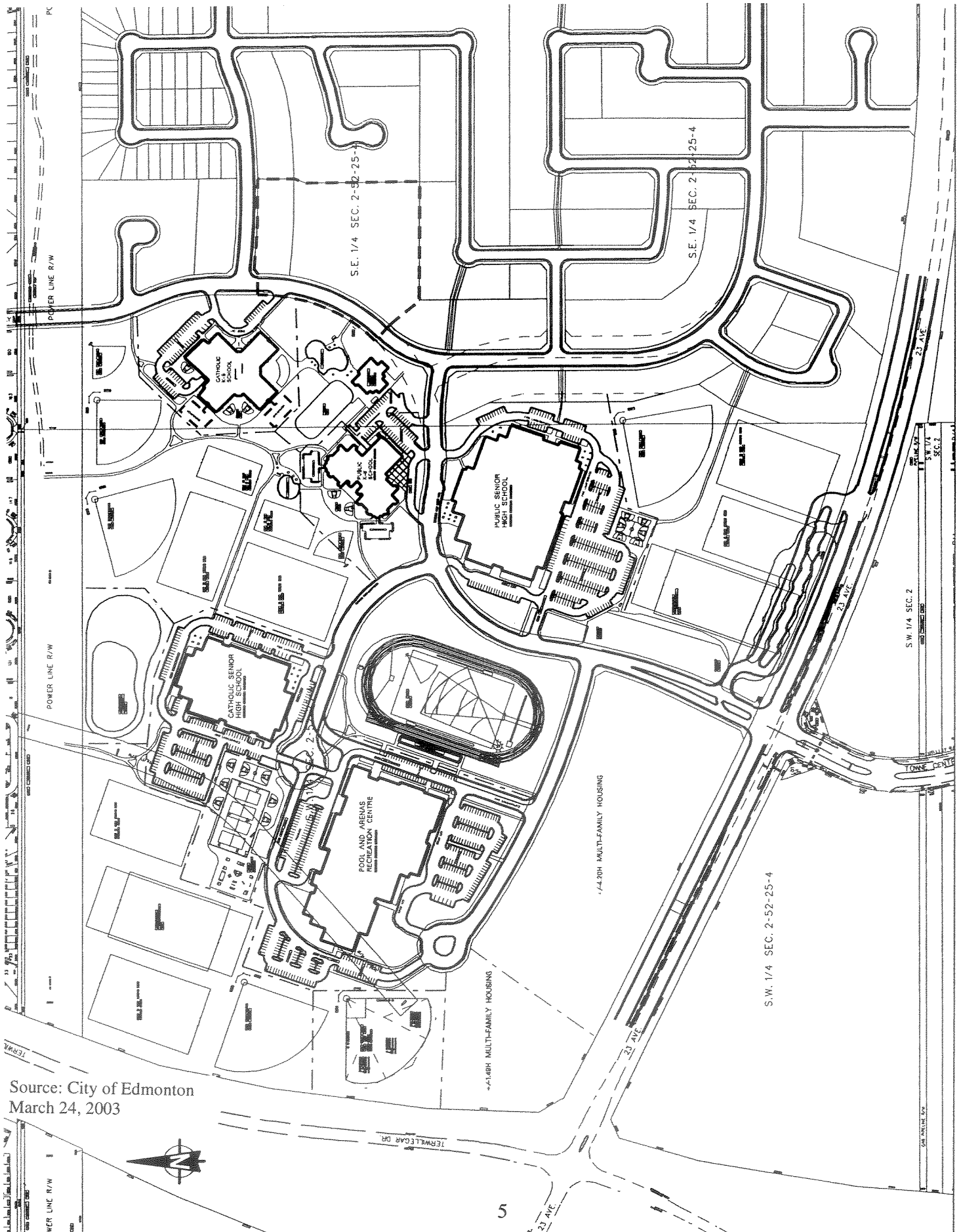
- Assigning a Principal

In new school construction projects the principal is usually assigned during the design stage of the process. The principal then serves on the management team during the design and construction phase of the project.

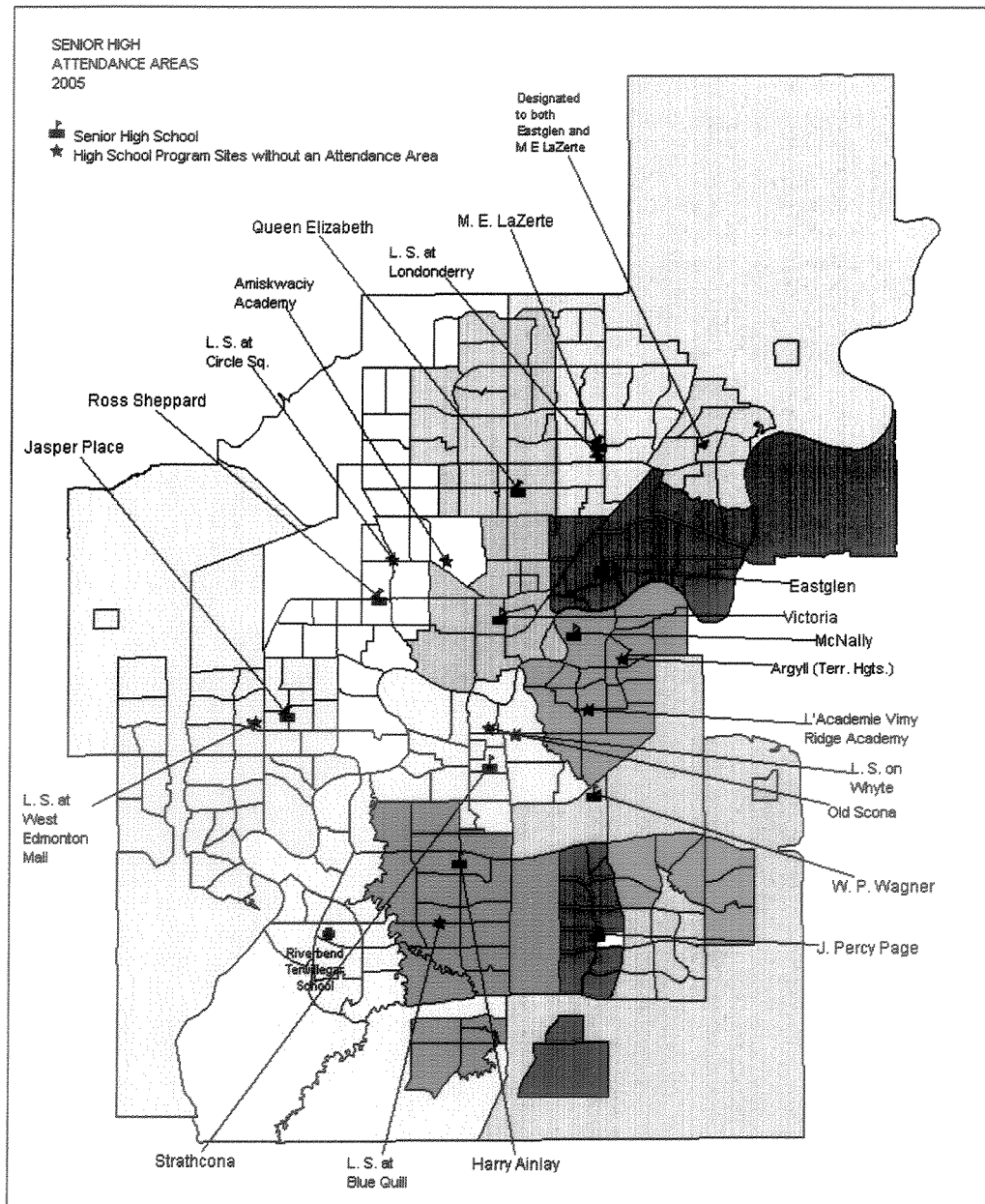
RB:cp

APPENDIX I	Proposed Site Plan
APPENDIX II	Current High School Designated Attendance Areas
APPENDIX III	Proposed Senior High Attendance Boundaries
APPENDIX IV	High School Programming 2005-2006
APPENDIX IV	Board Policies and Regulations – Naming of Schools

PROPOSED SITE PLAN

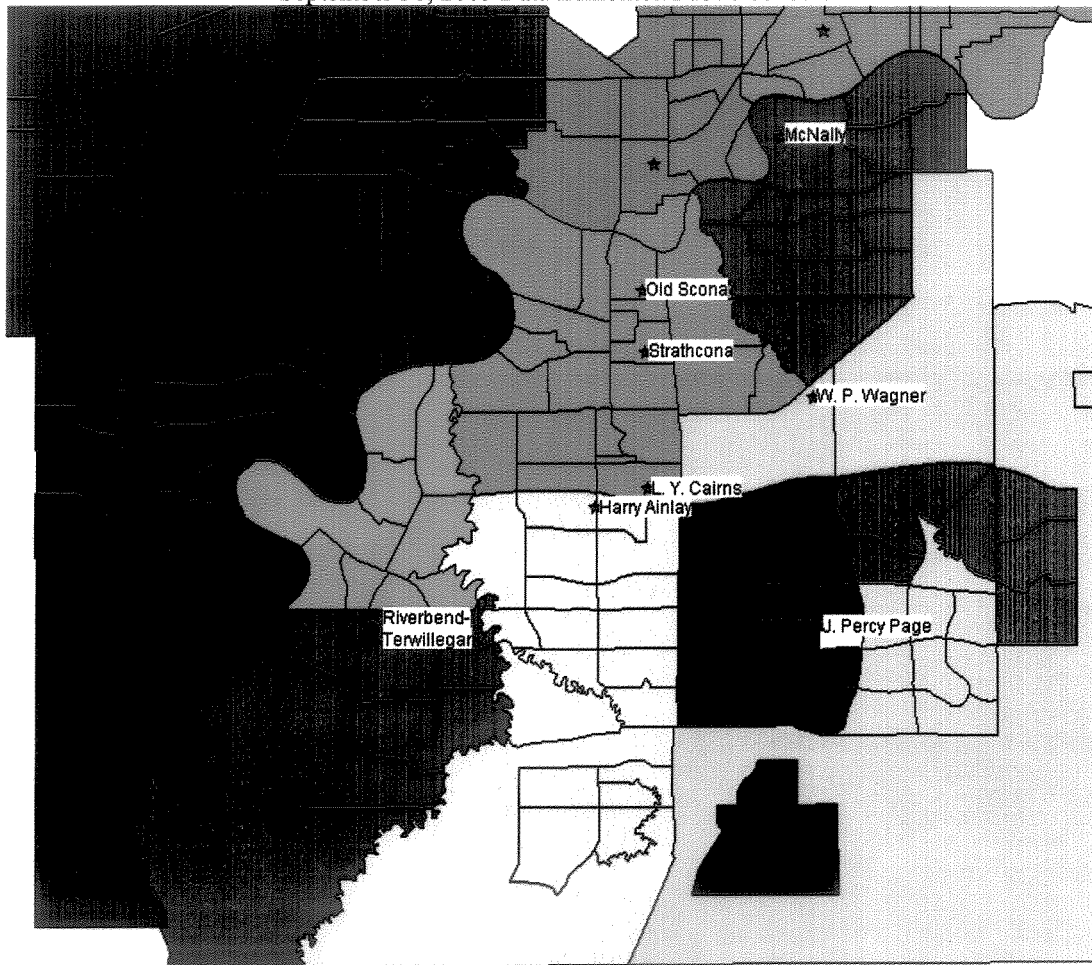


CURRENT HIGH SCHOOL DESIGNATED ATTENDANCE AREAS



Prepared by Planning, Edmonton Public Schools
Senior High AA.wor

PROPOSED SENIOR HIGH ATTENDANCE BOUNDARIES
 (Showing possible shared boundary Strathcona / Riverbend-Terwillegar)
 September 30, 2005 Data Edmonton Public Schools



Senior_high_attend	Fill	Sum(SH_2005_
*****		884
Eastglen		1,015
Eastglen / M E LaZerte		868
Harry Ainlay		1,927
J Percy Page		1,278
Jasper Place		2,790
M E LaZerte		1,812
McNally		2,428
Queen Elizabeth		2,212
Riverbend Terwillegar		313
Ross Sheppard		1,978
Shared Attendance Area		742
Strathcona		1,248
Victoria		1,000
W P Wagner		1,458

“Sum(SH_2005” indicates the total number of EPS Senior High students residing in this attendance area
 “*****” indicates students that could not be identified with an address in Edmonton or students that reside beyond city limits

HIGH SCHOOL PROGRAMMING 2005-2006

	Alternative Programs															Special Education Programs				
	Aboriginal Program	Academic Alternative	Advanced Placement	Arabic Bilingual	Arts Program	Cree	Dance	IB	French Immersion	German Bilingual	Hockey	Mandarin Bilingual	Sports Alternative	Ukrainian Bilingual	Vimy Program	CLS	ESL	Individual Support	Interactions	Strategies
SOUTH HIGH SCHOOLS																				
Harry Ainlay								√	√											
J. Percy Page			√					*									√			
L'Académie Vimy Ridge			**				√				√		√		√			√		
McNally								√				√				√			√	
Old Scona		√						√												
Strathcona			√							√										√
WP Wagner			√								√		√						√	

	Alternative Programs															Special Education Programs				
	Aboriginal Program	Academic Alternative	Advanced Placement	Arabic Bilingual	Arts Program	Cree	Dance	IB	French Immersion	German Bilingual	Hockey	Mandarin Bilingual	Sports Alternative	Ukrainian Bilingual	Vimy Program	CLS	ESL	Individual Support	Interactions	Strategies
NORTH HIGH SCHOOLS																				
Amiskwaciy Academy	√					√														
Eastglen			√																	√
Jasper Place		√	√					√									√			√
M.E. LaZerte								√				√		√		√				
Queen Elizabeth			√	√													√	√		
Ross Sheppard								√	√		√	√	√			√			√	
Victoria					√			√												

* J.Percy Page will begin to offer High School I.B Courses September 2006

** L'Académie Vimy Ridge has been approved to offer the Advanced Placement Program effective January 2006

Edmonton Public Schools
Planning Department
November 2005

BOARD POLICIES AND REGULATIONS – NAMING OF SCHOOLS

[Policies](#) -> [Table of Contents](#) -> [Facilities](#)

Edmonton Public Schools Board Policies and Regulations

CODE: FF.BP
TOPIC: Naming of Schools

EFFECTIVE DATE: 25-06-1996
ISSUE DATE: 27-09-1996
REVIEW DATE: 06-2001

The board reserves to itself the authority to name schools. In the naming of schools, preference shall be given to the names of persons who have made a valuable contribution to education and to the names of neighbourhoods.

Reference(s):
[FF.AR](#) - Naming New Schools
[School Act](#) Section 60(3)(c)

Edmonton Public Schools

Board Policies and Regulations

CODE: FF.AR
TOPIC: Naming of Schools

EFFECTIVE DATE: 26-06-1996
ISSUE DATE: 27-09-1996
REVIEW DATE: 06-2001

1. The following process shall be used in naming schools:
 - a. The board secretary shall keep a list of suggested school names.
 - b. The superintendent of schools shall provide conference committee with a short list of school names to be considered, including the rationale for each name.
 - c. The superintendent of schools shall recommend to the conference committee a name for the school.
2. The board's decision for the school name shall be communicated to the City of Edmonton.
3. For all new schools, a suitable plaque outlining the origin of the school name shall be placed in a prominent position in the school. If the school is named after an individual, a picture and brief biography of the person being honoured should be displayed.

Reference(s):
[FF.BP](#) - Naming of Schools
