

EDMONTON PUBLIC SCHOOLS

May 23, 2006

TO: Board of Trustees

FROM: Edgar Schmidt, Acting Superintendent of Schools

SUBJECT: 2006 Major Maintenance Plan

ORIGINATOR: R. MacNeil, Assistant to the Superintendent

RESOURCE

STAFF: Mike Brown, Fred Buffi, Mike Ediger, John Nicoll, Sherri O'Keefe, Doug Savary, Larry Schwenneker, Cindy Skolski, Ron Spence, Sandra Stoddard, Don Ward

INFORMATION

Major maintenance of and minor upgrades to district facilities are accomplished through the district's Major Maintenance Plan (MMP) which is block funded by the government Infrastructure Maintenance & Renewal Fund (IMR). The IMR is one source of available funding for the maintenance of facilities. The funding sources are:

- Operational funds which are allocated from the operating budget of the district and are determined by government formula under the plant operations and maintenance (PO&M) category. The monies are utilized to fund the day to day operational requirements within schools.
- Infrastructure Maintenance & Renewal Fund provides for life cycle replacement.
- Capital projects are provincially funded and address either essential or general upgrades to school buildings. These modernization projects and new construction are approved on a case by case basis and are drawn from the district's capital plan.

The funding sources for a six-year period are shown in the graph in Appendix I.

The 2006-2007 IMR allocation from Alberta Infrastructure is \$11,613,504.

Projects that fall within the guidelines and are to be included in the Major Maintenance Plan are identified for consideration by receiving input from schools, facilities staff and regulatory agencies. The need and requests for school improvement projects continue to exceed available funding. The plan, therefore, reflects the highest district need. The priorities and categories of projects have been developed with input from principals.

To ensure that all schools have the opportunity to provide input regarding their school's needs a procedure is included in the budget process. Information is provided to each school identifying scheduled/approved capital projects in that school. In addition, schools have been provided with information regarding the facility needs they previously identified. Schools have been requested to review their needs, add or delete projects, and prioritize the projects from the school's perspective on an annual basis.

Renewal of major building elements such as re-roofing are dealt with on a life-cycle replacement and condition assessment basis, thereby distributing the financial obligation over a number of years. This approach ensures that the district's physical assets are reasonably maintained given the available funding.

The 2006 Major Maintenance Plan has been reviewed to establish whether previously identified projects are consistent with current priorities. The resultant 2006 Major Maintenance Plan is attached (Appendix III). Projects are identified and listed in accordance with district categories and priorities. As well, an amount is included for emergent projects, for example, the replacement of failed hot water heaters and furnaces.

Highlights

- Facilities Services has centrally managed funding to continue the air system maintenance program which is designed to improve indoor air quality through the cleaning of air systems. The program is being carried out on a scheduled basis and is at no cost to the schools. This is year two of this program.
- The asbestos management program to enhance safe work procedures for district staff and assist administrators with hazardous materials strategies related to on-going inspection, monitoring and training was commenced in 2001. The asbestos abatement projects within the 2006 MMP are a continuation of the program.
- The 2006 MMP continues the partnership with the district's sustainable Energy Management Program for the lighting retrofit program for schools. The intent is to improve student learning environments and reduce energy costs. Fifty-four schools have been completed to date.
- In order to assist the district in the management of district assets, a five-year life-cycle replacement program is included with the MMP. This program provides information to the schools that will assist them in making decisions relative to maintenance expenditures and to allow the schools to undertake longer term planning for the management of the building (Appendix V). The actual projects may vary depending on government funding levels and changes in district priorities.
- Facilities Services partnered with the Planning Department to develop a planned and scheduled approach to upgrade district sites to accommodate barrier free access. The plan will insure a balance of barrier free sites within sectors of the district.
- Facilities Services has allocated funds to investigate interior modifications at various sites to improve security.
- Facilities Services has allocated funds to complete a computerized facilities management system feasibility study. The Planning Department and Information Technology Services are partners in this study.

Should any of the schools listed in the 2006 Major Maintenance Plan (MMP) be approved for modernization funding by Alberta Infrastructure, the MMP work scheduled for that school(s) will be reviewed. Wherever possible the work will be included within the applicable modernization.

MB:ct

APPENDIX I - Infrastructure Maintenance & Renewal and Plant Operations & Maintenance:
Funding Information

APPENDIX II - Stakeholders Flow Chart

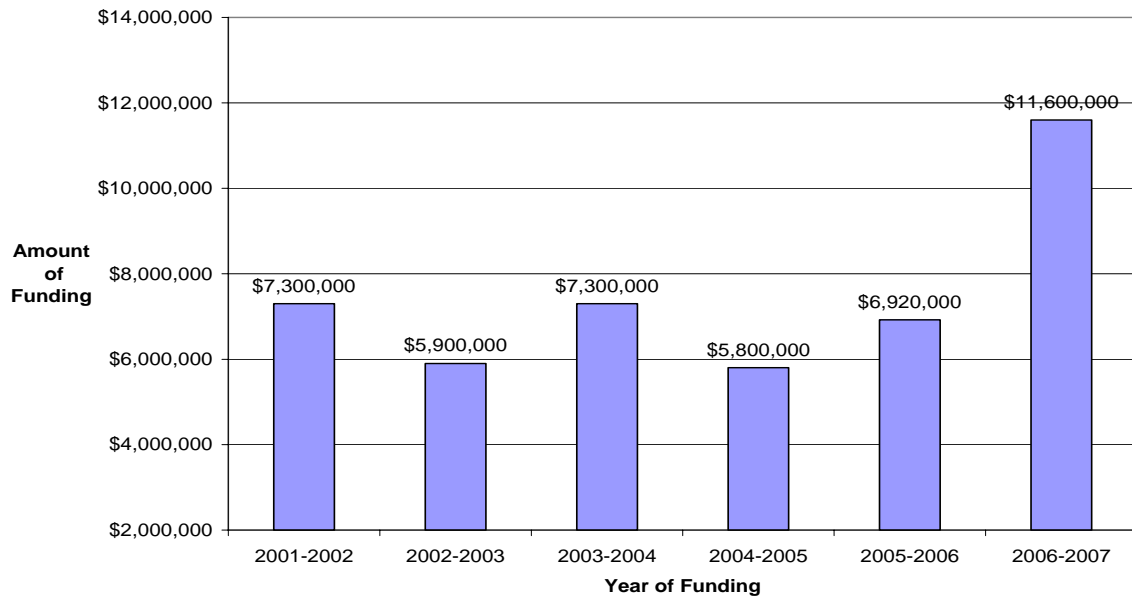
APPENDIX III - 2006 Major Maintenance Plan

APPENDIX IV - 2005 Major Maintenance Plan

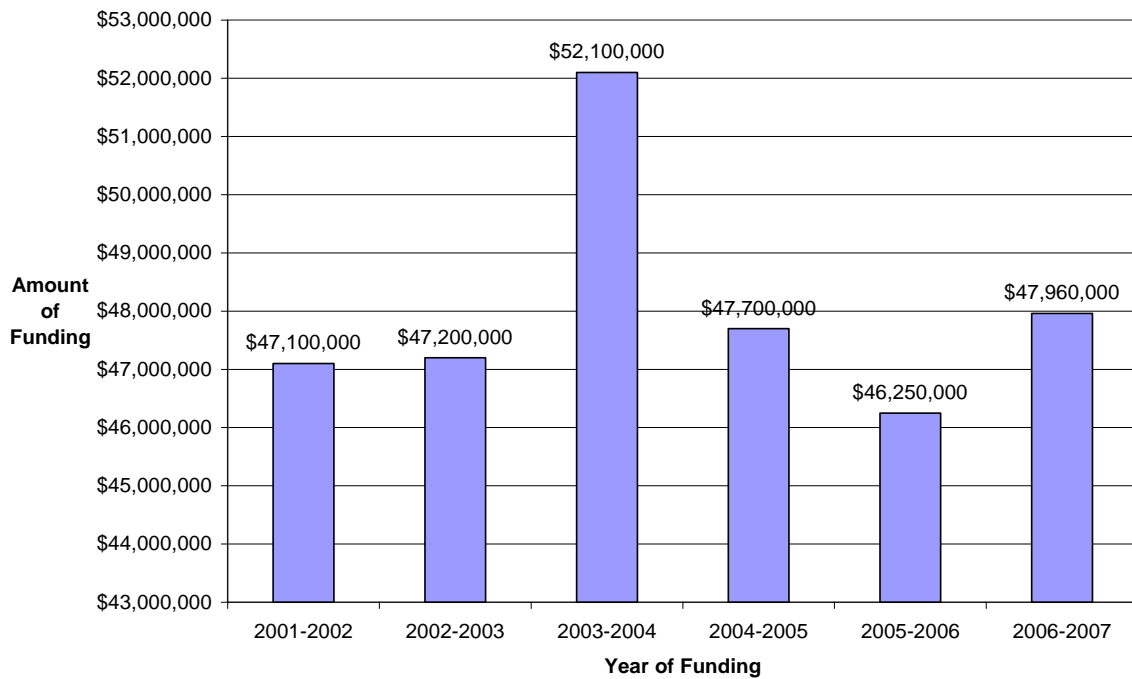
APPENDIX V - Proposed Five-Year Life-Cycle Replacement Program

**INFRASTRUCTURE MAINTENANCE AND RENEWAL
AND
PLANT OPERATIONS & MAINTENANCE: FUNDING INFORMATION**

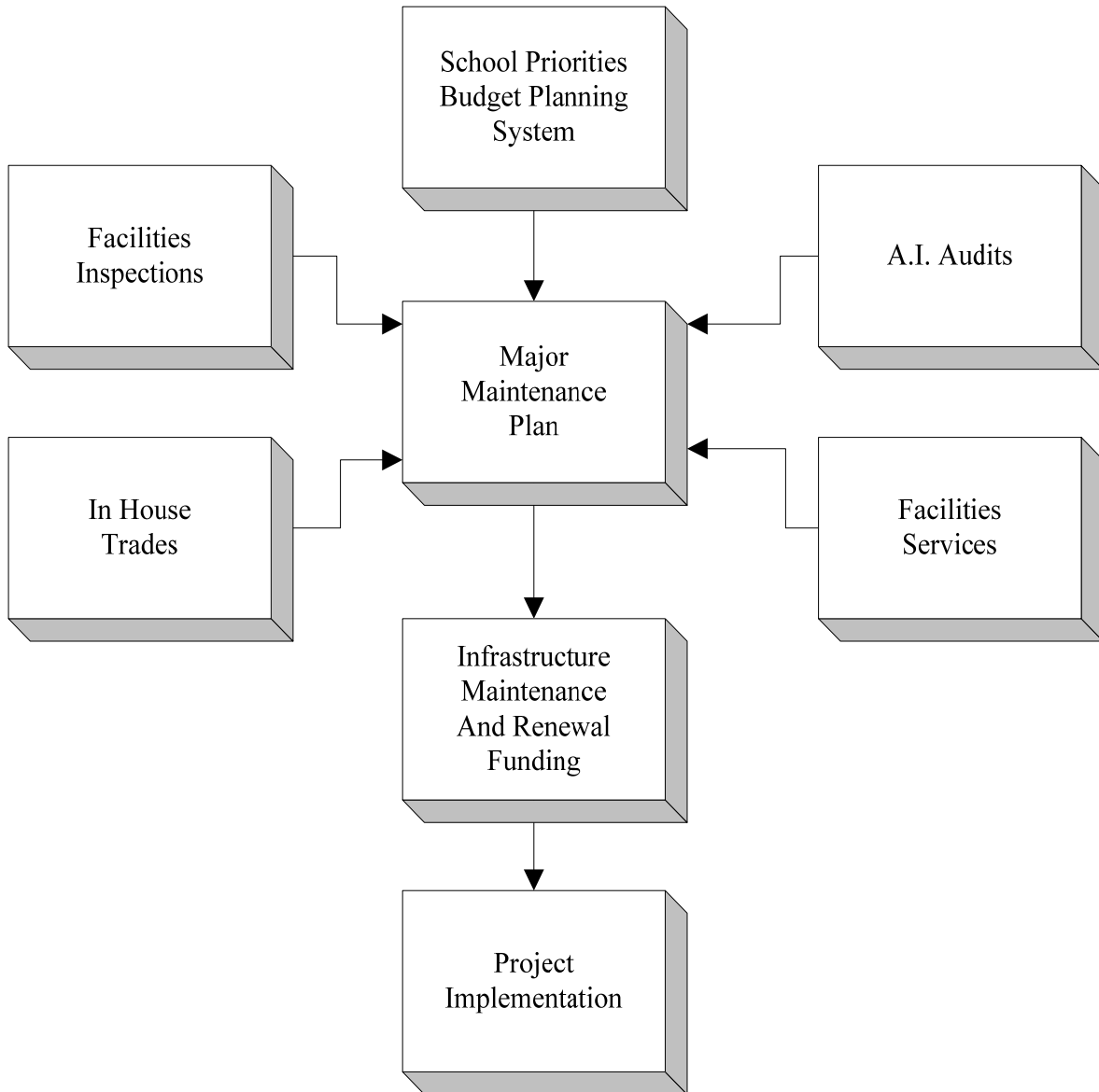
Infrastructure Maintenance & Renewal Funding



Plant Operations & Maintenance Funding



Stakeholders Flow Chart



2006 MAJOR MAINTENANCE PLAN

Life, Health and Safety

Fire Code Upgrades

These are on-going projects to replace obsolete fire alarm systems and other safety provisions in schools such as smoke and heat detectors.

Balwin	Sweet Grass
Belmead	Thorncliffe
Steinhauer	Westglen

Security

This is an on-going program to upgrade school security systems and security enhancements.

Capilano	Upgrade exterior lighting
Daly Grove	Replace intrusion alarm system
Dan Knott	Replace intrusion alarm system
Fraser	Replace intrusion alarm system
Hardisty	Upgrade security system
Highlands	Replace intrusion alarm system
Malmö	Replace intrusion alarm system
Queen Alexandra	Replace intrusion alarm system

Intercom System Replacements

This is an on-going program to upgrade intercom systems.

Highlands	Kirkness	Thorncliffe
J.A. Fife	LaPerle	Westlawn
John Barnett	Ormsby	

Asbestos Removals

These are on-going projects within the asbestos management program and are identified annually based on need. It is intended to continue the management program until all the asbestos in the district's buildings has been removed.

Belmead	Replace ceiling tiles
Braemar	Asbestos abatement
Delton	Asbestos abatement
Kildare	Replace ceiling tiles
Londonderry	Asbestos abatement – hot water storage tank
McKernan	Asbestos abatement
McLeod	Asbestos abatement
W.P. Wagner	Asbestos abatement and catwalk installation
Westlawn	Asbestos abatement – hot water storage tank

Washroom Upgrades

These are on-going projects based on need.

Athlone	Upgrade washrooms
Highlands	Upgrade washrooms
Horse Hill	Upgrade washrooms
J. Percy Page	Upgrade washrooms
Lendrum	Replace staffroom / classrooms sinks & countertops
Major General Griesbach	Upgrade washrooms
Newton	Upgrade washrooms
Richard Secord	Upgrade washrooms
Winterburn	Upgrade washrooms
York	Upgrade classroom sinks

The estimated cost of life and health safety projects is \$1,995,500.

Building Envelope

Re-Roofing

These are on-going projects based on life-cycle replacement and condition assessment.

Calder	Reroof area 1
Daly Grove	Reroof sloped roof areas
High Park	Reroof original building
Lee Ridge	Reroof west ½ area 2
Malmö	Reroof areas 1 and 2 – Phase I
McArthur	Reroof area 2
Montrose	Reroof original building
Mount Royal	Reroof entire building
Strathcona	Reroof areas 3 and 4
Tipaskan	Reroof flat areas
Vernon Barford	Reroof gymnasium and mechanical room
W.P. Wagner	Reroof area 3 west

Building Exteriors

Aldergrove	Upgrade weatherscreen
M.E. LaZerte	Upgrade weatherscreen
Newton	Upgrade weatherscreen

Window Replacement

These are on-going projects based on need.

Athlone	Replace windows – Phase I
Avonmore	Replace windows – Phase I
Jasper Place	Replace windows – Phase I
Parkview	Replace windows
Queen Alexandra	Replace windows
Queen Elizabeth	Replace windows – Phase I

Door Replacement

These are on-going projects based on need.

Balwin	Replace exterior doors
D.S. MacKenzie	Replace aluminum doors and frames
Delton	Replace interior doors
Duggan	Replace aluminum doors and frames
John A. McDougall	Upgrade door hardware
S. Bruce Smith	Stairwell door modifications
Steele Heights	Replace exterior doors
Strathcona	Replace exterior doors
Vernon Barford	Replace aluminum doors and frames
Westlawn	Replace exterior doors – Phase II

The estimated cost of building envelope projects is \$3,692,000.

Building Systems and Components

Electrical Upgrades

Avonmore	Replace main electrical service
Bennett Centre	Replace main electrical service
Evansdale	Electrical upgrade
Holyrood	Replace main electrical service
Rundle	Electrical upgrade

Mechanical System and Component Replacements

This is an on-going program to replace mechanical systems and components. This will reduce energy and maintenance costs and provide a better level of temperature control to classrooms.

Aldergrove	Install exhaust fan in server room
Glenora	Replace galvanized water piping
Mee-Yah-Noh	Install exhaust fans in server room and custodial storage room
Steele Heights	Computer room cooling
Westglen	Replace boilers
Westglen	Replace galvanized water piping

Mechanical System Upgrading

This is an on-going program to replace plumbing, drainage and ventilation systems and to reduce energy consumption through the installation of Direct Digital Control (D.D.C.) systems.

Belmont	Replace D.D.C. energy management system
Bisset	Replace D.D.C. energy management system
Brander Gardens	Replace D.D.C. energy management system
Brookside	Replace D.D.C. energy management system
Ellerslie	Connection to city water supply
Ellerslie	Connection to sanitary sewer system
Glengarry	Replace D.D.C. energy management system
Hazeldean	Replace water main
LaPerle	Replace D.D.C. energy management system
Richard Secord	Replace D.D.C. energy management system
Various	Consulting services

Architectural Repairs

This is an on-going program based on need.

Dan Knott	Mould abatement and pod wall reconstruction
Eastwood	Repair coping stones
Garneau	Repair coping stones
Garneau	Replace main entry exterior stairs / treads
Montrose	Rectify foundation water infiltration
Rio Terrace	Mudjack gymnasium floor
W.P. Wagner	Replace greenhouse corridor walls
Winterburn	Modifications to basketball standards
Winterburn	Upgrade gymnasium ceiling

Flooring

This is an on-going program to replace flooring.

Afton	Replace flooring
Avalon	Replace flooring
Avonmore	Replace flooring in five classrooms
Beacon Heights	Replace flooring
Belmead	Replace carpet
Brander Gardens	Replace flooring
Delton	Replace gymnasium composite flooring with hardwood
Duggan	Replace flooring
Dunluce	Replace flooring
Eastwood	Replace carpet and linoleum
Hardisty	Replace carpet
Hillcrest	Replace flooring
Holyrood	Replace carpet
J. Percy Page	Replace flooring
John D. Bracco	Replace flooring
LaPerle	Replace flooring
Lee Ridge	Replace flooring
Lendrum	Replace carpet
Major General Griesbach	Replace carpet
Malcolm Tweddle	Replace flooring
McNally	Replace flooring – Phase I
Parkallen	Replace carpet
T. D. Baker	Replace flooring
Westbrook	Replace carpet in kindergarten and music room
Westglen	Refinish hardwood flooring

The estimated cost of building systems and components projects is \$2,618,750.

Delivery of Educational Programming

Avalon	Replace lockers and selective upgrade of existing lockers
Brander Gardens	Replace book racks
D.S. MacKenzie	Replace corridor ceiling tiles
Dickinsfield	Replace lockers in change rooms
Edith Rogers	Replace lockers
Hardisty	Replace countertops in science room 206
Highlands	Replace lockers
L'Academie Vimy Ridge Academy	Upgrade home economics countertops
Mary Butterworth	Upgrade acoustics in library and foyer
Prince Charles	Upgrade lighting
Ross Sheppard	Upgrade science classrooms
Vernon Barford	Upgrade science rooms

The estimated cost of educational programming is \$625,500.

Wheelchair Accessibility and Special Needs Upgrading

These projects include the provision of elevators, wheelchair ramps and other specific needs.

Elmwood	Replace main entrance sidewalk
High Park	Replace wooden ramp with concrete
Parkview	Install auto door opener and ramps
Windsor Park	Replace main entrance sidewalk

The estimated cost of special needs upgrading is \$141,000.

Site Improvements

These projects include the provision of, or the improvement to, site drainage, drop-off lanes, parking lots and paved play areas.

Allendale	Upgrade asphalt
Avalon	Replace sidewalks
Crawford Plains	Install storm sewer
Crestwood	Replace water main connection
Forest Heights	Replace water main connection
Glendale	Regrading to improve site drainage
Holyrood	Install catch basin and upgrade asphalt parking area
J. Percy Page	Regrade perimeter of entire building to correct site drainage
J. Percy Page	Replace sidewalks
Kensington	Upgrade asphalt areas
Lendrum	Upgrade asphalt
Malmo	Resurface asphalt parking area
Menisa	Replace sidewalks
Ottewell	Replace sidewalks
Riverbend	Install catch basin
R.J. Scott/Lawton Campus	Replace storm sewer
Rutherford	Improve site drainage
Various	Upgrade asphalt areas

The estimated cost for site improvements is \$1,040,754.

Emergent Needs

In addition to the project categories listed above, replacement of failed mechanical components such as furnace heat exchangers, hot water tanks and water lines are dealt with on an emergent basis. An allocation of \$1.5 million has been retained to accommodate emergent needs within the district. Should there be surplus funds available at year end, they will be directed towards projects within the five year plan.

Exterior Paint Program

The allocation for the district's exterior paint program is \$420,000 and is retained centrally in the Facilities Services Maintenance budget. **These projects are not funded by the IMR.**

The exteriors of the following facilities are scheduled to be painted in the 2006-2007 budget year.

Athlone	Hazeldean	McKernan
Avonmore	High Park	Ormsby
Clara Tyner	Highlands	Pollard Meadows
Donnan	Hillview	Rosslyn
Duggan	Homesteader	Rundle
Edith Rogers	Kildare	S. Bruce Smith
Evansdale	Killarney	Vernon Barford
Glengarry	Lorelei	Weinlos
Greenfield	Lynnwood	
Grovenor	McArthur	

Air System Maintenance Program

The allocation for the district's Air System Maintenance Program is \$250,000 and is administered centrally in the Facilities Services budget. **These projects are not funded by the IMR.**

Abbott	Gold Bar	Mount Royal
Argyll Home School	Hardisty	Newton
Avonmore	Hazeldean	Ottewell
Beacon Heights	Highlands	Overlanders
Bellevue	Holyrood	R.J. Scott
Belmont	Horse Hill	Rundle
Braemar	John D. Bracco	Sifton
Capilano	Kenilworth	Terrace Heights
Clara Tyner	Kirkness	Virginia Park
Delwood	L'Academie Vimy Ridge Academy	W.P. Wagner
Donnan	Lawton	Waverley
Eastglen	McNally	York
Fraser	Mill Creek	
Fulton Place	Montrose	

Control Valves

Argyll	Gold Bar	Ottewell
Avonmore	Kensington	Queen Alexandra
Beacon Heights	L'Academie Vimy Ridge Academy	Strathcona
Braemar	Lauderdale	Westglen
Caernarvon	Laurier Heights	Windsor Park
Coronation	McArthur	
Fulton Place	Mee-Yah-Noh	

Thermostats

Abbott	Gold Bar	North Edmonton
Athlone	Grovenor	Northmount
Avonmore	Harry Ainlay	Old Scona
Balwin	High Park	Riverdale
Bannerman	Hillview	Rutherford
Baturyn	Homesteader	Satoo
Belvedere	Killarney	Scott Robertson
Bennett Centre	Londonderry	Sifton
Bisset	Lynnwood	Steele Heights
Capilano	Mayfield	Sweet Grass
D.S. MacKenzie	McKee	T.D. Baker
Delwood	Meadowlark	Velma E. Baker
Dickinsfield	Michael A. Kostek	Westbrook
Dovercourt	Newton	

Steam Traps

Academy at King Edward
Argyll
Avonmore
Belvedere
Crestwood

Delton
Idylwyld
King Edward
Lauderdale
McArthur

Prince Charles
Queen Alexandra
Ritchie
Rutherford

Proposed 2006 Major Maintenance Plan

School	Project
Afton	Replace flooring
Aldergrove	Upgrade weatherscreen
Aldergrove	Install exhaust fan in server room
Allendale	Upgrade asphalt
Athlone	Upgrade washrooms
Athlone	Replace windows Phase 1
Avalon	Replace flooring
Avalon	Replace lockers and selective upgrade of existing lockers
Avalon	Replace sidewalks
Avonmore	Electrical – replace main electrical service
Avonmore	Replace carpet in 5 classrooms
Avonmore	Replace windows Phase I
Balwin	Replace exterior doors
Balwin	Fire code upgrading
Beacon Heights	Replace flooring
Belmead	Asbestos abatement – ceiling tiles
Belmead	Replace carpet
Belmead	Fire code upgrading
Belmont	Replace energy management system
Bennett Centre	Replace main electrical service
Bisset	Replace energy management system
Braemar	Asbestos abatement as per HMMP report
Brander Gardens	Replace energy management system
Brander Gardens	Replace flooring
Brander Gardens	Replace boot racks
Brookside	Replace energy management system
Calder	Reroof area 1
Capilano	Upgrade exterior lighting
Crawford Plains	Site – install storm sewer
Crestwood	Replace water main connection
D.S. MacKenzie	Replace aluminum doors and frames
D.S. MacKenzie	Replace corridor ceiling tiles
Daly Grove	Reroof sloped roof areas
Daly Grove	Replace security system
Dan Knott	Replace security system
Dan Knott	Mould abatement and pod wall reconstruction
Delton	Replace interior doors
Delton	Asbestos abatement
Delton	Replace gymnasium composite flooring with hardwood
Dickinsfield	Replace lockers in change rooms

Proposed 2006 Major Maintenance Plan (continued)

School	Project
Duggan	Replace aluminum doors and frames
Duggan	Replace flooring
Dunluce	Replace flooring
Eastwood	Replace carpet and linoleum
Eastwood	Replace coping stones
Edith Rogers	Replace lockers
Ellerslie Campus	Connection to city water and sanitary sewer systems
Elmwood	Replace main entrance sidewalk
Evansdale	Electrical upgrade
Facilities Services	Upgrade asphalt areas
Facilities Services	Consulting Services – various
Facilities Services	Emergent needs
Forest Heights	Replace water main connection
Fraser	Replace security system
Garneau	Replace coping stones
Garneau	Replace main entry exterior stairs - treads
Glengarry	Replace energy management system
Glendale	Regrading to improve site drainage
Glenora	Replace galvanized water piping
Hardisty	Upgrade security system
Hardisty	Replace carpet
Hardisty	Replace counter tops in science room 206
Hazeldean	Replace water main
High Park	Replace wooden ramp with concrete
High Park	Reroof original building
Highlands	Replace lockers
Highlands	Upgrade washrooms
Highlands	Replace intercom system
Highlands	Replace security system
Hillcrest	Replace flooring
Holyrood	Electrical – replace main electrical service
Holyrood	Replace carpet
Holyrood	Site – install catch basin; and upgrade asphalt parking area
Horse Hill	Upgrade washrooms
J.A. Fife	Replace intercom system
J. Percy Page	Replace flooring
J. Percy Page	Regrade perimeter of entire building to correct site drainage
J. Percy Page	Replace sidewalks
J. Percy Page	Upgrade washrooms

Proposed 2006 Major Maintenance Plan (continued)

School	Project
Jasper Place	Replace windows Phase I
John A. McDougall	Upgrade door hardware
John Barnett	Replace intercom system
John D. Bracco	Replace flooring
Kate Chegwin	Replace security system
Kensington	Site – upgrade asphalt areas
Kildare	Asbestos abatement – replace ceiling tiles
Kirkness	Replace intercom system
LaPerle	Replace energy management system
LaPerle	Replace flooring
LaPerle	Replace intercom system
Lee Ridge	Replace flooring
Lee Ridge	Reroof west ½ area 2
Lendrum	Upgrade asphalt
Lendrum	Replace carpet
Lendrum	Replace staffroom, classroom sinks, and countertops
Londonderry	Asbestos abatement – hot water storage tank
Major General Griesbach	Replace carpet
Major General Griesbach	Upgrade washroom
Malcolm Tweddle	Replace flooring
Malmo	Replace security system
Malmo	Reroof areas 1 and 2 – Phase 1
Malmo	Site – resurface asphalt parking area
Mary Butterworth	Acoustic upgrade in open areas
McArthur	Reroof area 2
McNally	Replace flooring – Phase I
M.E. LaZerte	Upgrade building envelope
McKernan	Asbestos abatement
McLeod	Asbestos abatement
Mee-Yah-Noh	Install exhaust fans in server rooms; and custodial storage room
Menisa	Replace sidewalks to accommodate barrier free access
Montrose	Reroof original building
Montrose	Rectify foundation water infiltration
Mount Royal	Reroof entire building
Newton	Upgrade exterior weatherscreen
Newton	Upgrade washrooms
Ormsby	Replace intercom system
Ottewell	Replace sidewalks
Parkallen	Replace carpet
Parkview	Install auto door opener and ramps
Parkview	Replace windows

Prince Charles

Upgrade lighting

Proposed 2006 Major Maintenance Plan (continued)

School	Project
Queen Alexandra	Replace security system
Queen Alexandra	Replace windows
Queen Elizabeth	Replace windows Phase I
R.J. Scott/Lawton Campus	Site – replace storm sewer
Richard Secord	Replace energy management system
Richard Secord	Install washroom doors
Rio Terrace	Mudjack gymnasium floor
Riverbend	Site – install catch basin
Ross Sheppard	Upgrade science classrooms
Rundle	Electrical upgrade
Rutherford	Improve site drainage
S. Bruce Smith	Stairwell door modifications
Steele Heights	Replace exterior doors
Steele Heights	Computer room cooling
Steinhauer	Fire code upgrading
Strathcona	Reroof areas 3 and 4
Strathcona	Replace exterior doors
Sweet Grass	Fire code upgrading
T.D. Baker	Replace flooring
Thorncliffe	Replace intercom system
Thorncliffe	Fire code upgrading
Tipaskan	Reroof flat areas
Vernon Barford	Replace aluminum doors and frames
Vernon Barford	Reroof gymnasium and mechanical room
Vernon Barford	Upgrade science rooms
W.P. Wagner	Asbestos abatement and catwalk installation
W.P. Wagner	Reroof area 3 west
W.P. Wagner	Replace greenhouse corridor walls
Westbrook	Replace carpet in kindergarten and music room
Westglen	Refinish hardwood flooring
Westglen	Fire code upgrading
Westglen	Replace boilers
Westglen	Replace galvanized water piping
Westlawn	Asbestos abatement – hot water storage tank
Westlawn	Replace exterior doors – Phase II
Westlawn	Replace intercom system
Windsor Park	Replace main entrance sidewalk
Winterburn	Upgrade gymnasium ceiling
Winterburn	Modifications to basketball standards
Winterburn	Upgrade washrooms
York	Upgrade classroom sinks



2005 MAJOR MAINTENANCE PLAN

Life, Health and Safety

Fire Code Upgrades

These are on-going projects to upgrade the district's fire alarm systems and other safety provisions in schools such as smoke and heat detectors.

Ekota	Fire code upgrading
Facilities Services	Replace fire dampers at identified schools
Glendale	Fire code upgrading
Kameyosek	Fire code upgrading
Queen Alexandra	Fire code upgrading

Security System Replacements

This is an on-going program to replace school security systems.

Evansdale	
Facilities Services	Upgrade security control panels at identified schools
Julia Kiniski	

Intercom System Replacements

This is an on-going program to upgrade intercom systems.

Bannerman
Callingwood
Rosslyn

Asbestos Removals

These are on-going projects within the asbestos management program and are identified annually based on need. It is intended to continue the management program until all the asbestos in the district's buildings has been removed.

Dunluce	Replace ceiling tiles
Sweet Grass	Replace ceiling tiles

Washroom Upgrades

These are on-going projects based on need.

Crawford Plains	Replace sinks
John Barnett	Upgrade washrooms
Prince Charles	Upgrade washrooms
Rosslyn	Replace sinks and vanities
Westbrook	Upgrade washrooms
Westlawn	Upgrade washrooms

The estimated cost of life and health safety projects is \$811,897.

Building Envelope

Re-Roofing

These are on-going projects based on life-cycle replacement and condition assessment.

Dunluce	Reroof south pod area
Garneau	Reroof area 1
Glenora	Reroof gymnasium
Greenfield	Reroof area 2
Hazeldean	Reroof area 1 and 2
High Park	Reroof area 1
Jasper Place	Reroof areas 3, 4, and 5
Major General Griesbach	Reroof north classroom wing
Mary Butterworth	Reroof entrances
Norwood	Reroof gymnasium
Parkallen	Reroof entire building
Parkview	Reroof areas 4 and 5
Vernon Barford	Reroof 1971 addition
Westbrook	Reroof 1972 addition

Building Exteriors

Window Replacement

These are on-going projects based on need.

Parkallen	Remove glass block
Rutherford	Replace windows – Phase II
Thorncliffe	Install windows

Door Replacement

These are on-going projects based on need.

Harry Ainlay	Replace exterior doors – Phase II
McNally	Replace exterior doors
Westlawn	Replace exterior doors

The estimated cost of building envelope projects is \$2,652,652.

Building Systems and Components

Mechanical Heating System Replacements

This is an on-going program to replace heating systems. This will reduce energy and maintenance costs and provide a better level of temperature control to classrooms.

Glendale	Replace mechanical heating system
Highlands	Reinsulate crawl space piping
M.E. LaZerte	Replace science fume hoods
Parkallen	Provide heat in gymnasium storage

Mechanical System Upgrading

This is an on-going program to replace plumbing, drainage and ventilation systems and to reduce energy consumption.

Kildare	Replace energy management system
Parkview	Provide crawl space ventilation
Facilities Services	Boiler gas line modifications

Structural Repairs

This is an on-going program based on need.

Inglewood	Main entrance stairs
Malmo	Interior
Mayfield	Replace plastic laminate
Mill Creek	Replace plastic laminate
Montrose	Foundation repairs
Weinlos	Mudjack floors

Flooring

This is an on-going program to replace flooring.

Crawford Plains	Replace flooring in pods
Daly Grove	Replace flooring
Greenfield	Replace flooring
McKee	Replace flooring
Rosslyn	Replace flooring

The estimated cost of building systems and components projects is \$1,036,000.

Delivery of Educational Programming

LaPerle	Upgrade computer room
Rundle	Replace gymnasium acoustics

The estimated cost of educational programming is \$122,100.

Lighting Upgrades

This is the continuation of the program to improve the lighting in teaching spaces, corridors and administration areas. This program is implemented jointly with the district's Sustained Energy Management Program (S.E.M.P.) in partnership with EPCOR. Lighting upgrades have been completed in 54 schools to date. Lighting upgrades are planned for 17 sites this year.

Centennial	Londonderry	Ritchie
Crawford Plains	Mary Butterworth	Rosslyn
Daly Grove	Meyokumin	Scott Robertson
Dan Knott	Newton	Sweet Grass
Fraser	Parkview	Weinlos
J. Percy Page	Richard Secord	

Wheelchair Accessibility and Special Needs Upgrading

These projects include the provision of elevators, wheelchair ramps and other specific needs.

Meyokumin	Barrier free access – install concrete ramp
Ottewell	Barrier free access – replace sidewalk

The estimated cost of special needs upgrading is \$17,500.

Site Improvements

These projects include the provision of, or the improvement to, site drainage, drop-off lanes, parking lots and paved play areas.

Coronation	Upgrade asphalt
Patricia Heights	Replace sidewalks – north side
Queen Elizabeth	Replace sidewalk – west gymnasium
Ross Sheppard	Replace parking rail and receptacles
Rutherford	Improve site drainage
Sifton	Install bollards with chain gate
Winterburn	Student drop off

The estimated cost for site improvements is \$518,500.

Emergent Needs

In addition to the project categories listed above, replacement of failed mechanical components such as furnace heat exchangers, hot water tanks and water lines are dealt with on an emergent basis.

Exterior Paint Program

The allocation for the district's exterior paint program is \$420,000 and is retained centrally in the Facilities Services Maintenance budget. **These projects are not funded by the IMP.**

The exteriors of the following facilities are scheduled to be painted in the 2005-2006 budget year.

Abbott	Hillcrest	Meyokumin
Avalon	Horse Hill	Michael A. Kostek
Baturyn	James Gibbons	Minchau
Brightview	John D. Bracco	R.J. Scott
Britannia	Kate Chegwin	Satoo
Callingwood	Keheewin	Sifton
Centennial	Kensington	Spruce Avenue
Crawford Plains	Kirkness	Stratford
Dunluce	L.Y. Cairns	Tipaskan
Earl Buxton	Lago Lindo	Velma E. Baker
Elmwood	Lansdowne	W.P. Wagner
Fraser	Lee Ridge	Waverley
George H. Luck	Londonderry	Westbrook
Glenora	Malmo	Winterburn
Major General Griesbach	Mary Butterworth	

Air System Maintenance Program

The allocation for the district's Air System Maintenance Program is \$250,000 and is administered centrally in the Facilities Services budget. **These projects are not funded by the IMR.**

Sites as yet to be determined.

Life Cycle Repair/Replacement of Heating Valves and Controls

This is a continuing program based on a five to seven-year life cycle for the repair and/or replacement of heating valves and controls. **This program is not funded by IMR** but through maintenance allocations to the schools listed in each year of the program. The schools below are scheduled for the 2005/2006 school year.

Control Valves

Argyll	Gold Bar	Ottewell
Avonmore	Kensington	Queen Alexandra
Beacon Heights	L'Academie Vimy Ridge Academy	Strathcona
Braemar	Lauderdale	Westglen
Caernarvon	Laurier Heights	Windsor Park
Coronation	McArthur	
Fulton Place	Mee-Yah-Noh	

Thermostats

Abbott	Gold bar	North Edmonton
Athlone	Grovenor	Northmount
Avonmore	Harry Ainlay	Old Scona
Balwin	High Park	Riverdale
Bannerman	Hillview	Rutherford
Baturyn	Homesteader	Satoo
Belvedere	Killarney	Scott Robertson
Bennett Centre	Londonderry	Sifton
Bisset	Lynnwood	Steele Heights
Capilano	Mayfield	Sweet Grass
D.S. MacKenzie	McKee	T.D. Baker
Delwood	Meadowlark	Velma E. Baker
Dickinsfield	Michael A. Kostek	Westbrook
Dovercourt	Newton	

Steam Traps

Academy at King Edward	Delton	Prince Charles
Argyll	Idylwyld	Queen Alexandra
Avonmore	King Edward	Ritchie
Belvedere	Lauderdale	Rutherford
Crestwood	McArthur	

PROPOSED FIVE-YEAR LIFE-CYCLE REPLACEMENT PROGRAM

The ability to undertake the projects listed is dependent on government funding and emergent issues. The five-year plan has been revised to reflect district needs identified by Facilities Services inspections and Alberta Infrastructure facility audits.

Life, Health and Safety
Fire Code Upgrades

This is an on-going program to upgrade the district's fire alarm systems and other safety provisions in schools such as smoke and heat detectors.

2007	2008	2009	2010	2011
Academy at King Edward Eastwood Garneau Rutherford Westglen	Highlands Ritchie Spruce Avenue	Glenora High Park McCauley Mill Creek	Allendale Athlone Avonmore Virginia Park	Coronation Crestwood Donnan Forest Heights Grovenor

Security Upgrade

This is an on-going program to upgrade school security systems and security enhancements. With the completion of the 2006 Major Maintenance Plan, all security systems will be updated.

2007	2008	2009	2010	2011
Harry Ainlay John D. Bracco Overlanders Parkview Rosslyn Westlawn	Bisset Earl Buxton Glenora Inglewood McNally Parkview	J. Percy Page Mary Butterworth Prince Charles T.D. Baker Waverley W.P. Wagner	Forest Heights George H. Luck Malcolm Tweddle Rideau Park Woodcroft	Beacon Heights Grovenor Michael A. Kostek Rundle Velma E. Baker

Intercom System Replacements

This is an on-going program to upgrade school intercom systems and provide systems in schools that do not currently have one. The 2007 Major Maintenance Plan will be the first year of a three-year program to complete the installation of handsets in all district classrooms. With the completion of the 2009 MMP all district intercom systems will be microprocessor based complete with handsets in all classrooms.

2007	2008	2009	2010	2011
Fraser	Bisset	Avonmore	Belvedere	Coronation
Holyrood	Delwood	Centennial	Laurier Heights	Daly Grove
Lago Lindo	L.Y. Cairns	Crawford Plains	Lorelei	Mee-Yah-Noh
Mee-Yah-Noh	Lymburn	Duggan	Major General	Montrose
Montrose	Velma E. Baker	Lago Lindo	Griesbach	Sakaw
Sweet Grass	Westbrook	Lawton Rundle		

Asbestos Removal

These are on going projects within the asbestos management program and are identified annually based on the district's Hazardous Materials Management Program. It is intended to continue this program until all the asbestos in the district's buildings has been removed.

2007	2008	2009	2010	2011
Belvedere	Allendale	D.S. MacKenzie	Forest Heights	Gold Bar
Greenfield	McLeod	Donnan	Grovenor	Lansdowne
Horse Hill				McKernan Virginia

Washroom Upgrades

This is an on-going program based on need and includes replacement of sinks and faucets or complete washroom upgrades.

2007	2008	2009	2010	2011
Allendale	Afton	Ellerslie	Richard Secord	
Hazeldean	Grovenor	Montrose	Ross Sheppard	
Satoo	Rosslyn	Queen Elizabeth		

Building Envelope

Re-Roofing

This is an on-going program based on life-cycle replacement and condition assessment.

2007	2008	2009	2010	2011
Aldergrove	Belgravia	Brander Gardens	Belmead	Delwood
Britannia	Britannia	Callingwood	Delwood	Dovercourt
Caernarvon	D.S. MacKenzie	Glengarry	Kameyosek	Ekota
Capilano	Forest Heights	J.A. Fife	Lawton	Hillview
Dan Knott	Garneau	Lee Ridge	Londonderry	Londonderry
D.S. MacKenzie	Greenview	Menisa	Malmo	Major General
Kensington	Homesteader	M.E. LaZerte	McKee	Griesbach
L.Y. Cairns	J.A. Fife	Sherwood	McKernan	Richard Secord
Mee-Yah-Noh	LaPerle	Steinhauer	Scott Robertson	Riverdale
Ottewell	L.Y. Cairns	Westbrook	Vernon Barford	Sakaw
Ross Sheppard	M.E. LaZerte	Westglen Annex		W.P. Wagner

Window Replacement

This is an on-going program based on need.

2007	2008	2009	2010	2011
Avonmore Ph II	Jasper Place Ph III	Jasper Place Ph IV	Jasper Place Ph V	Ross Sheppard
Jasper Place Ph II	Queen Elizabeth	Ross Sheppard	Ross Sheppard	Ph IV
Queen Elizabeth	Ph II	Ph II	Ph III	
Ph II	Ross Sheppard			
	Ph I			

Exterior Door Replacement

This is an on-going program based on need.

2007	2008	2009	2010	2011
Killarney	Dunluce	Grace Martin	Duggan	
Lynnwood	Holyrood	Lauderdale		

Building Systems and Components

Mechanical System and Component Replacements

This is an on-going program to replace or upgrade mechanical systems and components that cannot sustain comfort levels in the classroom.

2007	2008	2009	2010	2011
Grandview Heights Ottewell	Holyrood Old Scona	Strathcona	M.E. LaZerte	Killarney Virginia Park

Replacement of Mechanical Systems Controls

This is an on-going program to replace failed or obsolete energy management systems.

2007	2008	2009	2010	2011
Centennial Earl Buxton Kildare Kirkness	Ekota John D. Bracco Julia Kiniski Lago Lindo	Britannia Old Scona Parkview Weinlos	Belmead Callingwood Rideau Park T.D. Baker	Daly Grove Glenora Homesteader John Barnett

Electrical Systems Upgrades

2007	2008	2009	2010	2011
Eastglen Holyrood	Strathcona	None identified at this time	None identified at this time	None identified at this time

Replacement of Water Piping

2007	2008	2009	2010	2011
Eastglen Spruce Avenue	Bennett Centre Glendale	Rutherford Major General Griesbach	Beacon Heights	None identified at this time

Weatherscreen Upgrades

M.E. LaZerte Newton	Upgrade building envelope Upgrade building envelope
------------------------	--

Architectural Repairs

This is an on-going program based on need. The projects listed will re-secure the coping stones.

2007	2008	2009	2010	2011
None identified at this time	None identified at this time	None identified At this time	None identified at this time	None identified at this time

Flooring

This is an on-going program to replace flooring that is no longer maintainable.

2007	2008	2009	2010	2011
Balwin	McNally Ph III	Allendale	Kate Chegwin	Britannia
Hardisty	D.S. MacKenzie	Dickinsfield	L.Y. Cairns Ph II	Glengarry
Lauderdale	Delwood	Ellerslie North	Malmo	Harry Ainlay
McNally Ph II	Julia Kiniski	Garneau	McKernan	Homesteader
Patricia Heights	Lendrum	Hose Hill	Montrose	J.A. Fife
Ritchie	S. Bruce Smith	L.Y. Cairns Ph I	Rundle	L'Academie Vimy
Ross Sheppard	Steele Heights	Mary Butterworth	Scott Robertson	Ridge Academy
Velma E. Baker	Westmount Ph I	Sifton	Westmount Ph III	Lawton
Windsor Park	York	Westmount Ph II	Woodcroft	Old Scona
Woodcroft	Portable classrooms	Portable classrooms	Portable classrooms	Queen Alexandra Portable classrooms

Wheelchair Accessibility and Special Needs Upgrading

These projects typically include the provision of elevators, wheelchair ramps and other specific needs. It is intended to focus on the needs of specific district sites in this and future years until all district sites have been upgraded.

Site Improvements

These projects typically include the provision of, or the improvement to, site drainage, drop-off lanes, parking lots and paved play areas. The City of Edmonton cost shares the provision of student drop-off lanes with Edmonton Public Schools and Edmonton Catholic Schools on an alternate year format.

2007	2008	2009	2010	2011
	Unidentified cost shared drop-off lane with the City of Edmonton		Unidentified cost shared drop-off lane with the City of Edmonton	

Emergent Needs

In addition to the project categories listed above, emergent replacement of mechanical components such as furnace heat exchangers, hot water tanks and water lines are dealt with on an emergent basis.

The annual budgeted cost for emergent projects is \$650,000.

Additional Projects

If the projects noted above can be completed for less than the estimated costs, the remaining funds will be directed to the replacement of floor coverings.

EXTERIOR PAINT PROGRAM

The allocation for the district's exterior paint program is \$420,000 and is managed centrally in the Facilities Services Maintenance budget.

The exteriors of the following facilities are scheduled to be painted in the following budget years.

2007	2008	2009	2010	2011	2012
Aldergrove	Afton	Academy at King	Belmont	Abbott	Athlone
Bellevue	Belgravia	Edward	Brookside	Avalon	Avonmore
Belmead	Capilano	Allendale	Calder	Baturyn	Clara Tyner
Belvedere	Coronation	Argyll	Daly Grove	Brightview	Donnan
Braemar	D.S. MacKenzie	Balwin	Dan Knott	Britannia	Duggan
Caernarvon	Delton	Bannerman	Dickinsfield	Callingwood	Edith Rogers
Crestwood	Delwood	Beacon Heights	Ekota	Centennial	Evansdale
Dovercourt	Ellerslie Elem.	Bennett Centre	Holyrood	Crawford Plains	Glengarry
Eastglen	Campus South	Bisset	J.Percy Page	Dunluce	Greenfield
Forest Heights	Ellerslie	Brander Gardens	Julia Kiniski	Earl Buxton	Grovenor
Fulton Place	Campus North	Eastwood	Laurier Heights	Elmwood	Hazeldean
Gold Bar	Garneau	Greenview	Lymburn	Fraser	High Park
Grace Martin	Glendale	Harry Ainlay	Meadowlark	George H. Luck	Highlands
Idylwylde	Grandview Heights	Kameyosek	Menisa	Glenora	Hillview
J.A. Fife	Hardisty	King Edward	Meyonohk	Griesbach	Homesteader
Lauderdale	Inglewood	L'Académie Vimy	Mount Pleasant	Hillcrest	Kildare
McCauley	Jasper Place	Ridge Academy	Newton	Horse Hill	Killarney
McKee	John A. McDougall	LaPerle	Norwood	James Gibbons	Lorelei
McNally	John Barnett	Lawton	Old Scona	John D. Bracco	Lynnwood
Mee-Yah-Noh	Kenilworth	Lendrum	Oliver	Kate Chegwin	McArthur
Mill Creek	Malcolm Tweddle	M.E. LaZerte	Parkview	Keheewin	McKernan
Montrose	Mount Royal	Mayfield	Patricia Heights	Kensington	Ormsby
North Edmonton	Ottewell	McLeod	Princeton	Kirkness	Pollard Meadows
Northmount	Parkdale	Overlanders	Queen Mary Park	L. Y. Cairns	Rosslyn
Parkallen	Queen Alexandra	Prince Charles	Rideau Park	Lago Lindo	Rundle
Sakaw	Queen Elizabeth	Richard Secord	Ritchie	Lansdowne	S. Bruce Smith
Scott Robertson	Steele Heights	Rio Terrace	Riverbend	Lee Ridge	Vernon Barford
Sherwood	Steinhauer	Sweet Grass	Riverdale	Londonderry	Weinlos
Strathcona	Talmud Torah	Virginia Park	Ross Sheppard	Malmo	
	Thorncliffe	Wellington	Rutherford	Mary Butterworth	
	Westlawn	Windsor Park	T.D. Baker	Meyokumin	
	Westmount	Woodcroft	Terrace Heights	Michael A. Kostek	
		Youngstown	Westminster	Minchau	
			Westglen	R.J. Scott	
			York	Satoo	
				Sifton	
				Spruce Avenue	
				Stratford	
				Tipaskan	
				Velma E. Baker	
				W.P. Wagner	
				Waverley	
				Westbrook	
				Winterburn	

AIR SYSTEM MAINTENANCE PROGRAM

Upon completion of the air system maintenance program, Facilities Services anticipates initiating air duct cleaning in 2005 – 2006.

2007-2008	2008-2009	2009-2010	2010-2011	2011-2012
Afton	Athlone	Allendale	Bannerman	Abbott
Aldergrove	Baturyn	Avalon	Belmead	Argyll Home Centre
Centennial	Bisset	Balwin	Brookside	Avonmore
Grandview Heights	Brightview	Belgravia	Callingwood	Beacon Heights
Jasper Place	Britannia	Belvedere	D.S. MacKenzie	Bellevue
Lauderdale	Caernarvon	Bennett Centre	Daly Grove	Belmont
Laurier Heights	Calder	Brander Gardens	Dan Knott	Braemar
Lymburn	Coronation	Centre for Education	Dickinsfield	Capilano
Ormsby	Crawford Plains	Delton	Forest Heights	Clara Tyner
Parkview	Crestwood	Eastwood	Forest Heights	Delwood
Michael A. Kostek	Dovercourt	Evansdale	Grace Martin	Donnan
Rutherford	Duggan	Garneau	Hillcrest	Eastglen
S. Bruce Smith	Dunluce	Glengarry	Keheewin	Fraser
Sherwood	Earl Buxton	J.A. Fife	LaPerle	Fulton Place
Thorncliffe	Edith Rogers	John A. McDougall	Lee Ridge	Gold Bar
Westlawn	Ekota	John Barnett	Londonderry	Hardisty
	Ellerslie Campus	Killarney	Malcolm Tweddle	Hazeldean
	Ellerslie Primary	King Edward	McKee	Highlands
	Elmwood	L'Academie Vimy	M.E. LaZerte	Holyrood
	George H. Luck	Ridge Academy	Minchau	Horse Hill
	Glendale	L. Y. Cairns	Patricia Heights	John D. Bracco
	Glenora	Lago Lindo	Rideau Park	Kenilworth
	Greenfield	Lansdowne	Rio Terrace	Kirkness
	Greenview	Lendrum	Ritchie	L'Academie Vimy
	Grovenor	M.E. LaZerte	Stratford	Ridge Academy
	Harry Ainlay	Major General	Steele Heights	Lawton
	High Park	Griesbach	Winterburn	McNally
	Hillview	Malmö	W.P. Wagner	Mill Creek
	Homesteader	McCauley		Montrose
	Inglewood	McKernan		Mount Royal
	James Gibbons	McLeod		Newton
	J. Percy page	Mee-Yah-Noh		Ottewell
	Julia Kiniski	Mill Creek/Ritchie		Overlanders
	Kameyosek	Mount Pleasant		R.J. Schott
	Kate Chegwin	Northmount		Rundle
	Kensington	North Edmonton		Sifton
	Kildare	Norwood		Terrace Heights
	Lorelei	Old Scona		Virginia Park
	Lynnwood	Oliver		W.P. Wagner
	Mary Butterworth	Parkallen		Waverley
	Mayfield	Parkdale		York
	McArthur	Prince Charles		
	Meadowlark	Prince Rupert		
	Menisa	Princeton		
	Meyokumin	Queen Alexandra		
	Meyonohk	Queen Elizabeth		
	Pollard Meadows	Queen Mary Park		
	Richard Secord	Riverbend		
	Ross Sheppard	Riverdale		

CONTINUED	AIR	SYSTEM	MAINTENANCE	PROGRAM
2007-2008	2008-2009	2009-2010	2010-2011	2011-2012

Rosslyn	Rosslyn
Sakaw	Scott Robertson
Satoo	Spruce Avenue
Steele Heights	Victoria
Strathcona	Westglen
Sweet Grass	Westminster
T.D. Baker	Westmount
Talmud Torah	Windsor Park
Tipaskan	
Velma E. Baker	
Vernon Barford	
Weinlos	
Wellington	
Westbrook	
Woodcroft	
Youngstown	

LIFE CYCLE REPAIR/REPLACEMENT OF HEATING VALVES AND CONTROLS

This is a continuing program based on a five to eight-year life cycle for the inspection and possible repair/replacement of heating valves and controls. This program is not funded by the IMR but through special annual maintenance allocations of \$400,000 to the schools listed below.

Control Valves

2007 - 2008	2008 – 2009	2009 – 2010	2010 – 2011	2011 - 2012	2012 - 2013
Academy at King	Balwin	Abbott	Allendale	Belvedere	Argyll
Edward	Bannerman	Afton	Balwin	Delton	Avonmore
Crestwood	Brander Gardens	Athlone	Bellevue	Ekota	Beacon Heights
Evansdale	Brookside	Belgravia	Belmont	Glendale	Braemar
Forest Heights	Capilano	Belmead	Britannia	Hazeldean	Caernarvon
Glengarry	Clara Tyner	Brightview	Calder	Highlands	Coronation
Grandview Heights	D.S. MacKenzie	Earl Buxton	Delwood	Idylwyld	Fulton Place
Grovenor	Dickinsfield	Eastwood	Donnan	Lawton	Gold Bar
Kameyosek	Dunluce	Hardisty	George H. Luck	M.E. LaZerte	Kensington
King Edward	Eastglen	John D. Bracco	Killarney	McLeod	L'Académie Vimy
Lendrum	Edith Rogers	Kate Chegwin	LaPerle	Mount Pleasant	Ridge Academy
Londonderry	Ellerslie EJJ	Kensington	Michael A. Kostek	Mount Royal	Lauderdale
Mayfield	Garneau	Lago Lindo	Mill Creek	North Edmonton	Laurier Heights
McKernan	Hillcrest	Malmö	Montrose	Parkallen	McArthur
McNally	Holyrood	Mary Butterworth	Old Scona	Parkdale	Mee-Yah-Noh
Northmount	Horse Hill	Menisa	Steele Heights	Prince Charles	Ottewell
Patricia Heights	Keheewin	Meyonohk	Wellington	Queen Elizabeth	Queen Alexandra
Pollard Meadows	Kildare	Newton		Scott Robertson	Strathcona
Prince Rupert	Lee Ridge	Rundle		Spruce Avenue	Westglen
Princeton	McKee	S. Bruce Smith			Windsor Park
R.J. Scott	Meyokumin	Sherbrooke			
Ritchie	Minchau	Tipaskan			
Rutherford	Richard Secord	Virginia Park			
Sherbrooke	Riverbend	Westmount			
Sifton	Ross Sheppard	Youngstown			
Stratford	Rossllyn				
Vernon Barford	Sakaw				
Waverley	Satoo				
Westlawn	Sherwood				
Woodcroft	Sweet Grass				
York	T.D. Baker				

Thermostats

2007-2008	2008-2009	2009-2010	2010 - 2011	2011 - 2012	2012-2013
Belmead	Academy at	Britannia	Abbott	Belmead	Academy at
Belmont	King Edward	Dunluce	Athlone	Belmont	King Edward
Brookside	Afton	Eastglen	Avonmore	Brookside	Afton
Caernarvon	Beacon Heights	Eastwood	Balwin	Caernarvon	Beacon Heights
Calder	Brander Gardens	Glendale	Bannerman	Calder	Brander Gardens
Clara Tyner	Centennial	Glengarry	Baturyn	Clara Tyner	Centennial
Crestwood	Coronation	Grace Martin	Belvedere	Crestwood	Coronation
Delton	Dan Knott	Major General	Bennett Centre	Delton	Dan Knott
Evansdale	Donnan	Griesbach	Bisset	Evansdale	Donnan
Forest Heights	Earl Buxton	Inglewood	Capilano	Forest Heights	Earl Buxton
Greenview	Edith Rogers	J. Percy Page	D.S. MacKenzie	Greenview	Edith Rogers
Highlands	Ellerslie EJH	John D. Bracco	Delwood	Highlands	Ellerslie EJH
Hillcrest	Fraser	Julia Kiniski	Dickinsfield	Hillcrest	Fraser
Horse Hill	Fulton Place	Kameyosek	Dovercourt	Horse Hill	Fulton Place
John Barnett	Greenfield	Kenilworth	Gold Bar	John Barnett	Greenfield
King Edward	Hardisty	Kensington	Grovenor	King Edward	Hardisty
Kirkness	Hazeldean	Kildare	Harry Ainlay	Kirkness	Hazeldean
L.Y. Cairns	Holyrood	Lago Lindo	High Park	L.Y. Cairns	Holyrood
L'Académie	Keheewin	Lawton	Hillview	L'Académie	Keheewin
Vimy Ridge	Laurier Heights	Lorelei	Homesteader	Vimy Ridge	Laurier Heights
Lansdowne	M.E. LaZerte	Lymburn	Killarney	Lansdowne	M.E. LaZerte
McKernan	Malcolm	Mee-Yah-Noh	Londonderry	McKernan	Malcolm
McLeod	Tweddle	Minchau	Lynnwood	McLeod	Tweddle
Montrose	Menisa	Parkallen	Mayfield	Montrose	Menisa
Mount Royal	Mill Creek	Prince Charles	McKee	Mount Royal	Mill Creek
Norwood	Overlanders	Prince Rupert	Meadowlark	Norwood	Overlanders
Oliver	Parkdale	Ross Sheppard	Michael A.	Oliver	Parkdale
Pollard	Princeton	Rosslyn	Kostek	Pollard	Princeton
Meadows	Rio Terrace	Rundle	Newton	Meadows	Rio Terrace
R.J. Scott	Riverbend	Westlawn	North Edmonton	R.J. Scott	Riverbend
Richard Secord	S. Bruce Smith	Winterburn	Northmount	Richard Secord	S. Bruce Smith
Rideau Park	Spruce Avenue	York	Old Scona	Rideau Park	Spruce Avenue
Steinhauer	Strathcona		Riverdale	Steinhauer	Strathcona
Terrace Heights	Vernon Barford		Rutherford	Terrace Heights	Vernon Barford
Tipaskan	Wellington		Satoo	Tipaskan	Wellington
Virginia Park	Windsor Park		Scott Robertson	Virginia Park	Windsor Park
W.P. Wagner			Sifton	W.P. Wagner	
Waverley			Steele Heights	Waverley	
Westmount			Sweet Grass	Westmount	
Woodcroft			T.D. Baker	Woodcroft	
Youngstown			Velma E. Baker	Youngstown	
			Westbrook		

Steam Traps

2007-2008	2008-2009	2009-2010	2010-2011	2011-2012	2012-2013	2013-2014	2014-2015
Athlone Bellevue Highlands	Balwin Belgravia Capilano	Braemar Grovenor Harry Ainlay	Allendale Eastglen Eastwood	Donnan Fulton Place Major General	Forest Heights Lendrum	Academy at King Edward Argyll	Athlone Bellevue Highlands
Queen Elizabeth Scott Robertson Virginia Park Windsor Park	Coronation Delwood Garneau Glendale Gold Bar Hardisty Holyrood Jasper Place Kensington Killarney Woodcroft	Hillcrest McKernan Old Scona Parkdale Prince Rupert Richard Secord Sherbrooke Spruce Avenue W.P.Wagner	Ross Sheppard Strathcona	Griesbach Hazeldean Laurier Heights Mee-Yah- Noh North Edmonton Parkallen Westglen Westmount	Mill Creek Montrose Mount Pleasant Mount Royal Newton	Avonmore Belvedere Crestwood Delton Idylwyld King Edward Lauderdale McArthur Prince Charles Queen Alexandra Ritchie Rutherford Wellington	Queen Elizabeth Scott Robertson Virginia Park Windsor Park

