

EDMONTON PUBLIC SCHOOLS

June 13, 2006

TO: Board of Trustees
FROM: Edgar Schmidt, Acting Superintendent of Schools
SUBJECT: Concept Design Report - New High School in Southwest Edmonton
ORIGINATOR: Ron MacNeil, Executive Director

RESOURCE

STAFF: Jenise Bidulock; Randy Billey, Jonathan Chinn; Ray Cimolini; Josephine Duquette; Michael Ediger; Terri Gosine; Gary Holroyd; Glenn Iriye; Roland Labbe; Jennifer Lawley; Ron McGowan; John Nicoll; Marianne Pudel; Larry Schwenneker; Hans Van Ginhoven

INFORMATION

This project was approved by Alberta Infrastructure within the Provincial 2005-2006 Capital Plan. The project budget is \$ 17,371,071.

The design for the project is the result of extensive consultation among the architectural consultants, educational staff and leaders, students and community. A team of three district high school principals along with staff from Planning and Facilities have met on a weekly basis since March to help establish the program requirements for this school. As part of the consultation process, the design team was joined with students from district junior and senior high schools for a workshop to develop the concept design. The results of this workshop were shared with the community and were commended.

The project is targeted for tender and award in January/February 2007 with construction to start in April of 2007. The project is scheduled for completion by September 2008.

LS:ct

APPENDIX I: Capital Project Design Report for the New High School in Southwest Edmonton

**Edmonton Public Schools
New High School for Southwest Edmonton
Concept Design Report**

June 13, 2006

Program Summary

Cohos Evamy, in conjunction with the Edmonton Public Schools Project Design Team and the Principal Advisory Group, have confirmed the initial programming and space requirements for the new high school to be built in southwest Edmonton.

The programs for the school include:

- Grade 10-12 regular high school
- High school International Baccalaureate
- Special education will be offered to reflect the needs of the attendance area
- Career and Technology Studies

Design Summary

With the confirmation of the initial program and space requirements the team has commenced the schematic design process.

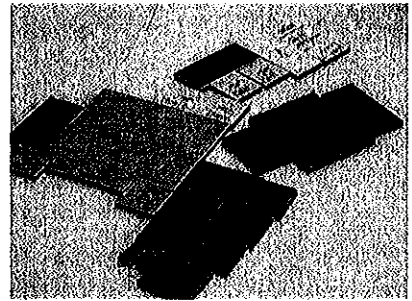
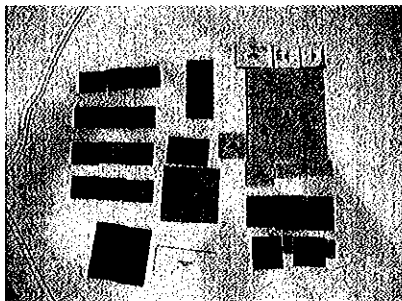
Two design workshops have been completed to date. The focus of these design workshops was to explore key relationships between program elements as well as key site relationships. The site relationships are important to consider for this project due to the integration with the City of Edmonton Recreation Centre to the west of the school.

Some key considerations that were explored included:

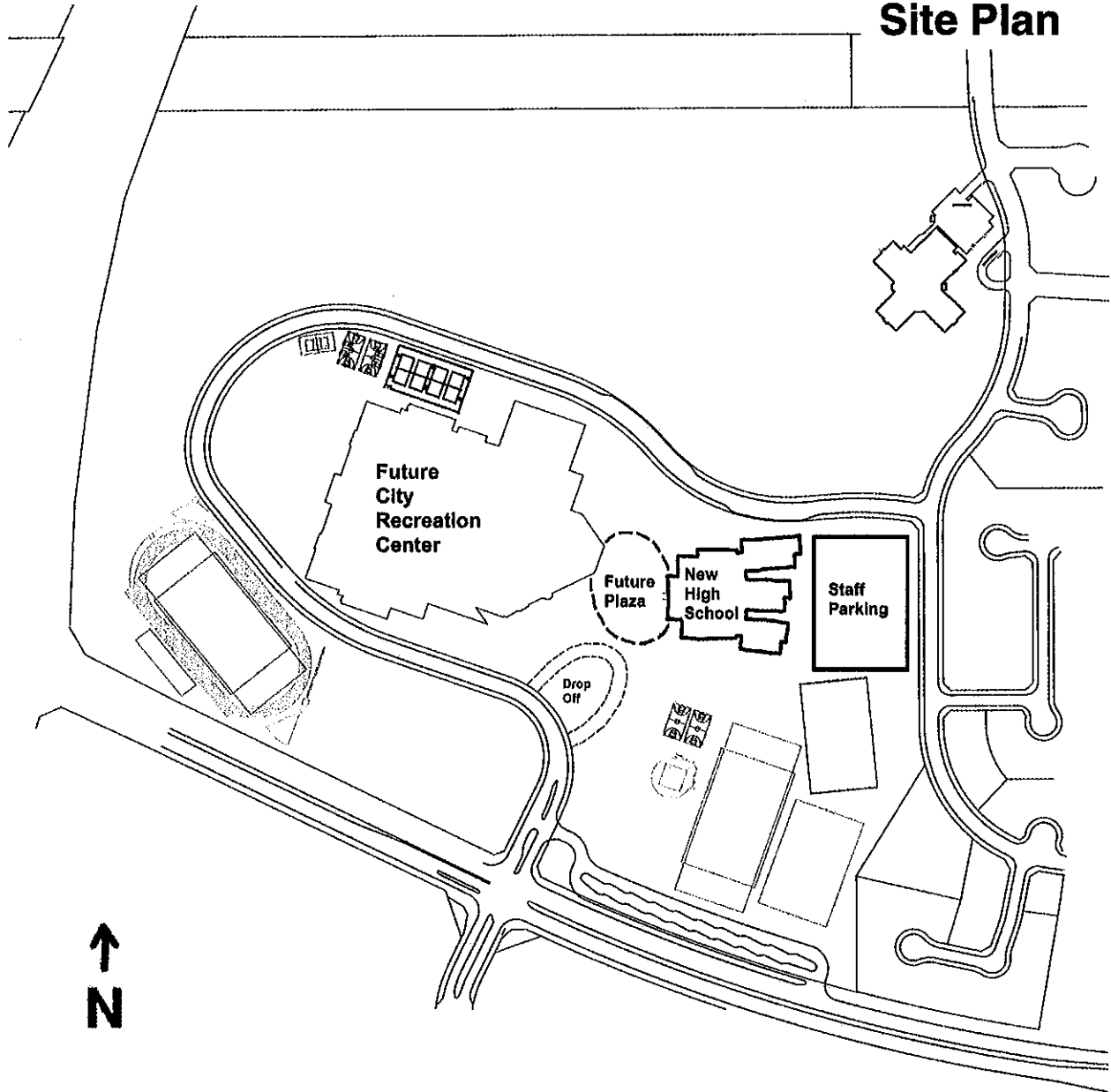
- What is the program focus of the school?
- How do we incorporate technology into the building?
- Where is the main entrance and what should be located adjacent to the main entrance?
- How should the school feel when you enter?
- What are the focal points of the school?
- What and where is the heart of the school?
- What and where is the social centre of the school?
- What and where is the study centre of the school?
- How many floors will the school be? What should be located on each floor?
- What spaces should be adjacent and conversely, what spaces should not be adjacent to each other?

The first workshop included the Edmonton Public Schools Project Design Team and the Principal Advisory Group. The second workshop included team members from the first workshop plus students and staff from district junior and senior high schools.

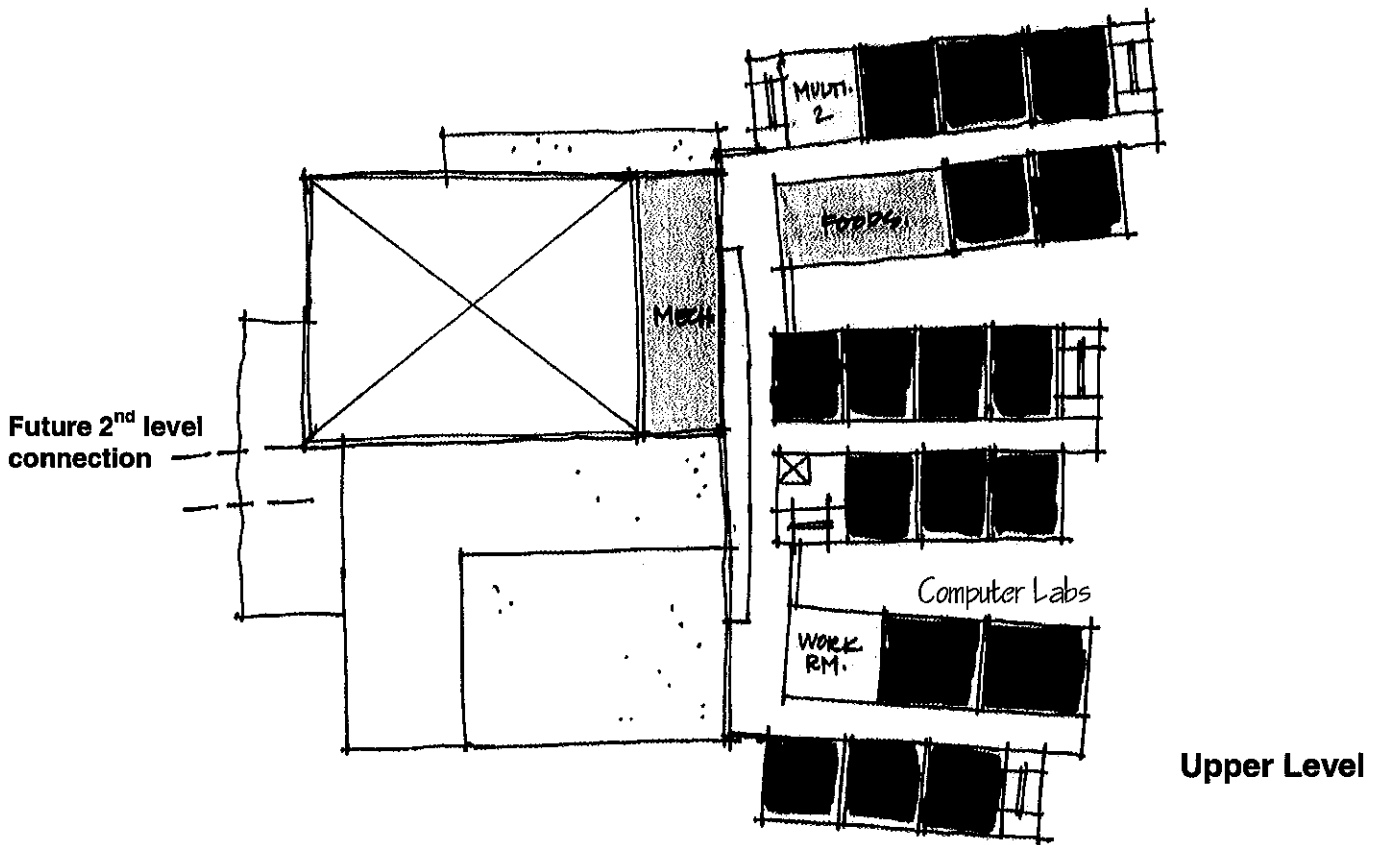
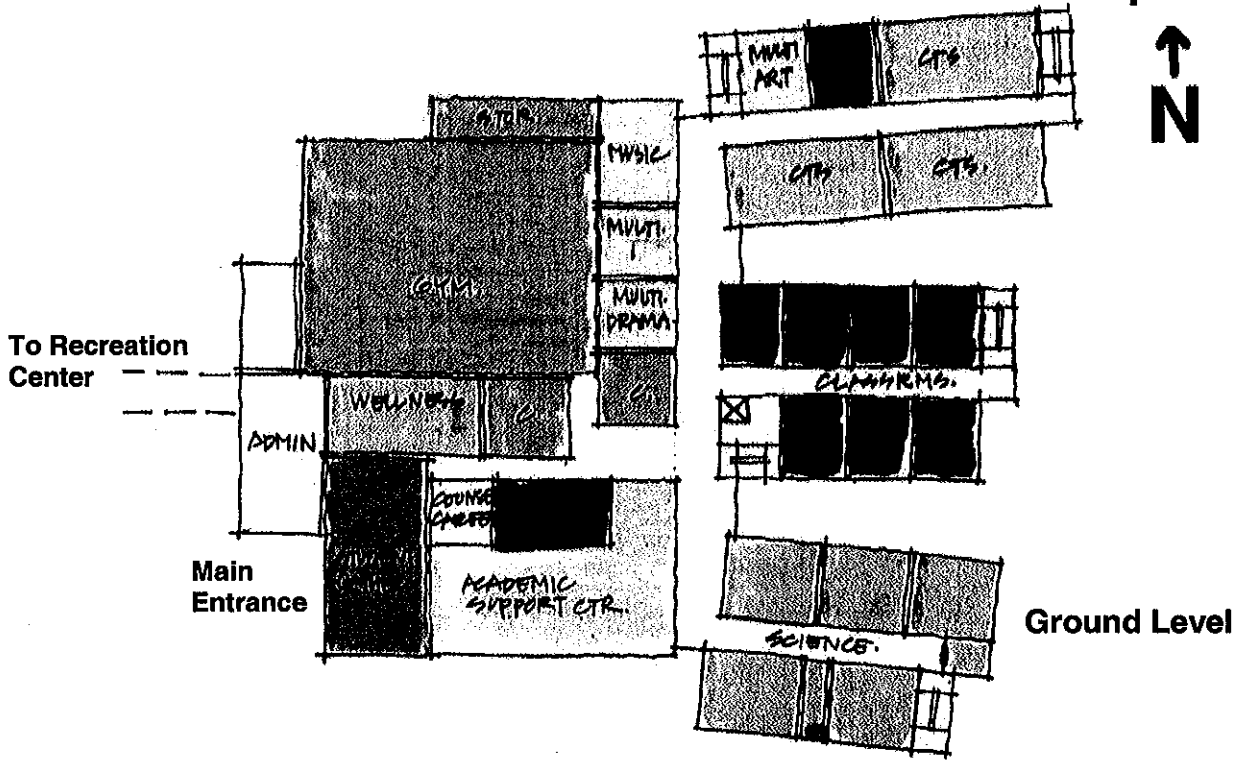
The preliminary design process and planning options that resulted from these design workshops were incorporated into an information open house presentation to the community on May 17, 2006. Feedback from the community that evening was positive and the involvement of students in the process was complimented.



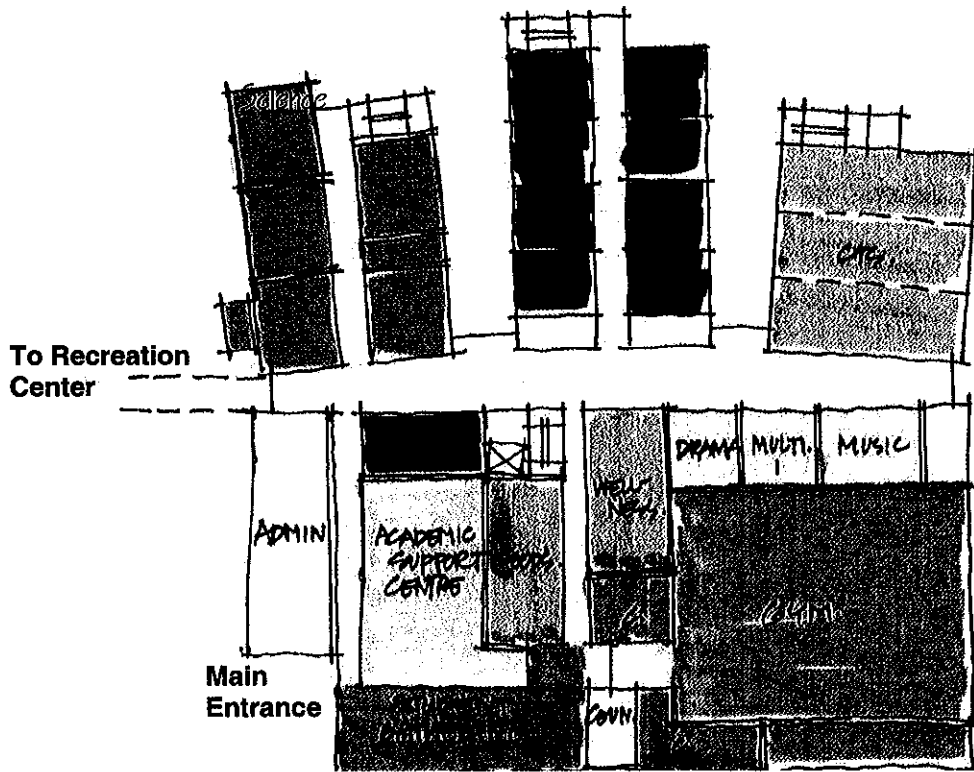
Site Plan



Option A

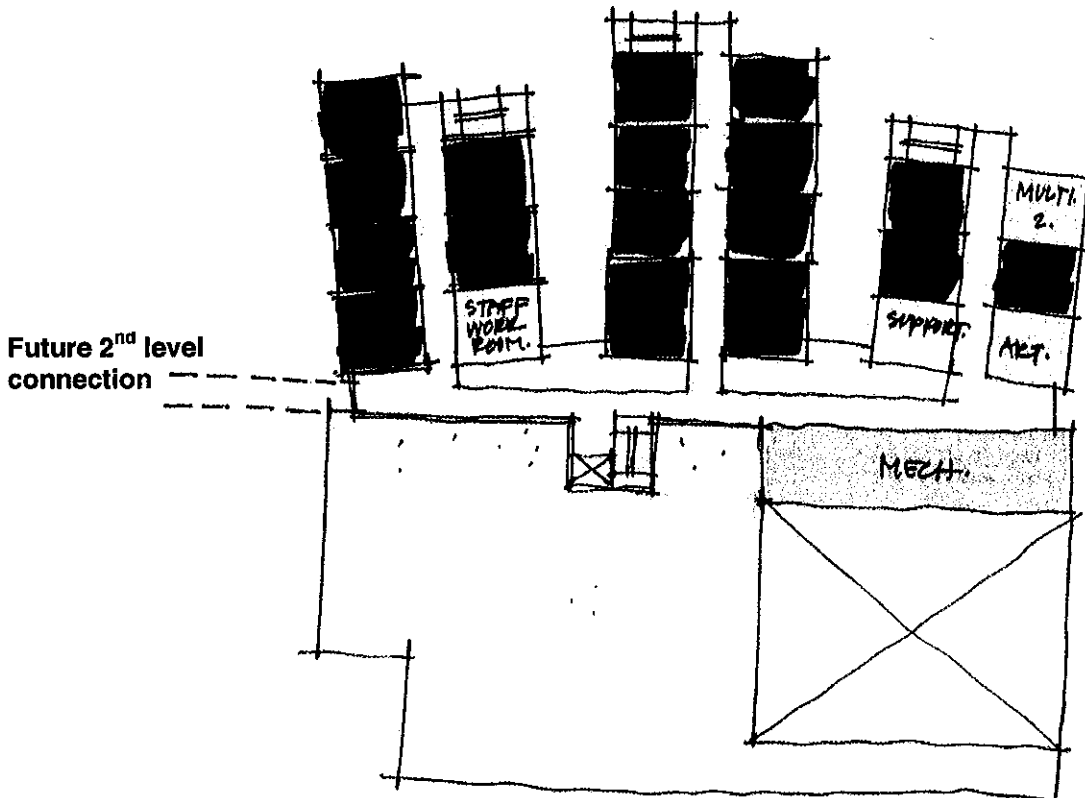


OPTION B



Main Entrance

Ground Level



Future 2nd level connection

Upper Level

New Southwest High School - 1000 Capacity Grades 10-12 School

Approved Building Area

	Size	#	<i>Total Building Area</i>
Instructional			
Classrooms	80 s.m.	23	1840 s.m.
Science Labs	120 s.m.	4	480 s.m.
Ancillary Rooms	130 s.m.	2	260 s.m.
Ancillary Rooms	90 s.m.	4	360 s.m.
Information Services (ITS)	115 s.m.	3	345 s.m.
Gymnasium (incl. storage)	1029 s.m.	1	1029 s.m.
Library	382 s.m.	1	382 s.m.
CTS	200 s.m.	5	1000 s.m.
Non-Instructional			
Admin and Staff	632 s.m.	1	632 s.m.
Physical Ed. Change Room & Offices	170 s.m.	1	170 s.m.
Circulation	1174 s.m.	1	1174 s.m.
Wall Area	563 s.m.	1	563 s.m.
Storage Area	164 s.m.	1	164 s.m.
Washrooms	108 s.m.	1	108 s.m.
Flexible Space	216 s.m.	1	216 s.m.
Wiring and Network	40 s.m.	1	40 s.m.
Total Building Area			8988 s.m.

CONCEPT DESIGN REPORT
Edmonton Public Schools - New High School for Southwest Edmonton

Space/Area Calculation

	Approved Building Area			Program Draft 1			Total Building Area
	Size	#	Bldg Area	Size	#	Bldg Area	
Instructional							
Classrooms	80 s.m.	23	1840 s.m.	80 s.m.	23	1840 s.m.	1840 s.m.
Science Rooms	120 s.m.	4	480 s.m.				610 s.m.
<i>General Science</i>				120 s.m.	2	240 s.m.	
<i>Chemistry</i>				110 s.m.	1	110 s.m.	
<i>Biology</i>				110 s.m.	1	110 s.m.	
<i>Physics</i>				110 s.m.	1	110 s.m.	
<i>Greenhouse</i>				20 s.m.	1	20 s.m.	
<i>Prep room</i>				20 s.m.	1	20 s.m.	
Ancillary	130 s.m.	2	260 s.m.				130 s.m.
<i>Music</i>				130 s.m.	1	130 s.m.	
Ancillary	90 s.m.	4	360 s.m.				360 s.m.
<i>Multipurpose</i>				90 s.m.	1	90 s.m.	
<i>Multipurpose</i>				90 s.m.	1	90 s.m.	
<i>Art</i>				90 s.m.	1	90 s.m.	
<i>Drama</i>				90 s.m.	1	90 s.m.	
Information Services (Computer Lab)	115 s.m.	3	345 s.m.	115 s.m.	3	345 s.m.	345 s.m.
Gym	1050 s.m.	1	1050 s.m.	1050 s.m.	1	1050 s.m.	1050 s.m.
Gym Storage	1050 s.m.	10%	105 s.m.	105 s.m.	1	105 s.m.	105 s.m.
Library / Academic Support Centre	405 s.m.	1	405 s.m.				405 s.m.
<i>Stacks/computer stations/seating</i>				314.5 s.m.	1	314.5 s.m.	
<i>Circulation desk</i>				15 s.m.	1	15 s.m.	
<i>Librarian workstation</i>				7.5 s.m.	1	7.5 s.m.	
<i>Storage</i>				20 s.m.	1	20 s.m.	
<i>Multipurpose/break-out room</i>				12 s.m.	4	48 s.m.	
CTS Spaces @ 1/200 students	200 s.m.	5	1000 s.m.				1000 s.m.
<i>Foods</i>				200 s.m.	1	200 s.m.	
<i>Multipurpose</i>				200 s.m.	4	800 s.m.	
Total Instructional Area			5845 s.m.			5845 s.m.	5845 s.m.
Admin and Staff Area			632 s.m.				623 s.m.
<i>Principal's Office</i>				15 s.m.	1	15 s.m.	
<i>V. Principal's Office</i>				12 s.m.	3	36 s.m.	
<i>Administrative Offices</i>				10 s.m.	3	30 s.m.	
<i>General Admin Space</i>				50 s.m.	1	50 s.m.	
<i>Student Study Room</i>				3 s.m.	3	9 s.m.	
<i>Conference Room</i>				30 s.m.	1	30 s.m.	
<i>Staff Lounge</i>				110 s.m.	1	110 s.m.	
<i>Team Planning Centre</i>				65 s.m.	1	65 s.m.	
<i>Staff Washrooms</i>				28 s.m.	1	28 s.m.	
<i>Infirmery</i>				0 s.m.	0	0 s.m.	
<i>Kitchen</i>				0 s.m.	0	0 s.m.	
<i>Mechanical/Electrical Space</i>				180 s.m.	1	180 s.m.	
<i>Custodial space</i>				7.5 s.m.	2	15 s.m.	

CONCEPT DESIGN REPORT
Edmonton Public Schools - New High School for Southwest Edmonton

	Approved Building Area			Program Draft 1			Total Building Area
	Size	#	Bldg Area	Size	#	Bldg Area	
PE – Change Room/Office			180 s.m.	90 s.m.	2	180 s.m.	180 s.m.
Counseling Office				10 s.m.	2	20 s.m.	
<i>Offices</i>				15 s.m.	1	15 s.m.	
<i>Reception/files</i>				20 s.m.	1	20 s.m.	
Career Centre							
Student Gathering			216 s.m.	0.25 s.m.	900	225 s.m.	225 s.m.
Student Washroom			108 s.m.	36 s.m.	3	108 s.m.	108 s.m.
Circulation	25%		1211 s.m.			1211 s.m.	1211 s.m.
Wall Area	12%		581 s.m.			581 s.m.	581 s.m.
Storage Area	3.50%		170 s.m.			170 s.m.	170 s.m.
Wiring Closet			45 s.m.	45 s.m.	1	45 s.m.	45 s.m.
Total Non-Instructional Area			3143 s.m.				3143 s.m.
Total Building Area			8988 s.m.			8988 s.m.	8988 s.m.

Next Steps

- The block planning options will be developed by Cohos Evamy and presented to the Edmonton Public Schools Project Design Team and the Principal Advisory Group. A single concept will be selected as the basis on which to develop the schematic design.

Schedule

	Anticipated Start Date	Anticipated Completion
Schematic Design		July 31 st 2006
Design Development	July 2006	September 2006
Contract Documents	August 2006	January 2007
75% Working Drawings		Mid-December 2007
90% Working Drawings		Mid-January 2007
Pre-Tender Estimate		Mid-January 2007
Tender and Award	January 2007	February 2007
Construction	March 2007	June 2008
School Opening		September 2008

Budget

The Provincially approved budget for the school is as follows:

Building Construction	\$ 14,012,292
Consultant Fees	1,132,193
Project Expenses	280,246
Furniture and Equipment	1,261,106
CTS Equipment	304,647
Sub-Total	\$ 16,990,484
GST @ 2.24%	380,587
Total Budget	\$ 17,371,071