

EDMONTON PUBLIC SCHOOLS

March 25, 2003

TO: Board of Trustees

FROM: A. McBeath, Superintendent of Schools

SUBJECT: Second Quarterly Report: December 1, 2002 to February 28, 2003

ORIGINATOR: A. Habinski, Executive Director School and District Services

RESOURCE

STAFF: Diane Brunton, Bruce Cline, Mary-Ellen Deising, Brian Fedor, Dennis Huculak, Les McElwain, Dean Power, Dorothy Sombach, Linda Wiens

INFORMATION

The purpose of the quarterly report is to provide trustees with timely monitoring information pertaining to board governance and accountability. Appendix I provides detailed information regarding results and activities in the areas of students, staff and physical assets in the district. The information compares data from the second quarter of 2002-2003 to the same period in 2001-2002.

LW: DB

APPENDIX I: - Second Quarterly Report: December 1, 2002 to February 28, 2003

## SECOND QUARTERLY REPORT DECEMBER 1, 2002 to FEBRUARY 28, 2003

### A. STUDENTS

#### 1. ENROLMENT

The reported district enrolment on February 28, 2003 totaled 81,464 students. This represents a net decrease of 690 students compared to the total on September 30, 2002.

Student enrolment distributions for February 28, 2003 and comparisons with September 30, 2002, September 30, 2001 and February 28, 2002 are shown below:

|                  | 2001-2002     |                | 2002-2003     |                |
|------------------|---------------|----------------|---------------|----------------|
|                  | Sept. 30      | Feb. 28        | Sept. 30      | Feb. 28        |
| Pre-Kindergarten | 826           | 866            | 783           | 817            |
| Kindergarten     | 5,101         | 5,066          | 4,926         | 4,869          |
| Elementary       | 31,226        | 31,040         | 30,379        | 30,073         |
| Junior High      | 15,984        | 15,912         | 16,235        | 16,105         |
| High School      | 18,701        | 18,669         | 18,544        | 18,233         |
| Special Needs    | 7,598         | 7,653          | 7,974         | 7,983          |
| E.S.L.           | 1,771         | 1,905          | 2,947         | 3,045          |
| Institutions     | <u>427</u>    | 398            | <u>366</u>    | <u>339</u>     |
| District total   | <u>81,634</u> | <u>81,509</u>  | <u>82,154</u> | <u>81,464</u>  |
| CHANGE           |               | -125<br>(-.2%) |               | -690<br>(-.8%) |

Enrolment counts reported here do not include students at Metro Community College.

#### 2. MOBILITY

|                           | 2001-2002<br>Dec.-Feb. | 2002-2003<br>Dec.-Feb. |
|---------------------------|------------------------|------------------------|
| Transfers between schools | 2,880                  | 3,564                  |
| Transfers out of district | 869                    | 1,036                  |
| New registrations         | 1,041                  | 1,112                  |
| Withdrawals from schools  | 919                    | 1,183                  |

#### 3. ATTENDANCE

| Month    | Daily Attendance |         |             |         | Period Attendance |         |              |         |
|----------|------------------|---------|-------------|---------|-------------------|---------|--------------|---------|
|          | Elementary       |         | Junior High |         | *Junior High      |         | High School; |         |
|          | 2001-02          | 2002-03 | 2001-02     | 2002-03 | 2001-02           | 2002-03 | 2001-02      | 2002-03 |
| December | 94.2%            | 94.2%   | 91.1%       | 91.0%   | N/A               | 90.8%   | 88.6%        | 85.7%   |
| January  | 94.7%            | 94.3%   | 92.4%       | 91.6%   | N/A               | 90.7%   | 88.6%        | 85.3%   |
| February | 92.8%            | 93.4%   | 90.4%       | 89.6%   | N/A               | 87.9%   | 88.0%        | 87.7%   |

Period attendance for junior high is not available prior to the 2002-03 school year.

## STUDENTS (Continued)

### 4. STUDENT SUSPENSIONS

(a) Number of Suspensions:

| School Type              | Dec. '01-<br>Feb. '02 | Dec. '02-<br>Feb. '03 | Differences |
|--------------------------|-----------------------|-----------------------|-------------|
| Elementary               | 281                   | 450                   | +169        |
| Elementary - Junior High | 150                   | 285                   | +135        |
| Junior High              | 689                   | 954                   | +265        |
| Senior High              | 421                   | 816                   | +395        |
| Institutional Services   | 12                    | 20                    | +8          |
| <b>TOTALS</b>            | <b>1553</b>           | <b>2525</b>           | <b>+972</b> |

(b) Distribution of Suspensions by School Type (Dec. '02 to Feb. '03), excluding Institutional Services/Alternative sites

| Number of Suspensions | Number of Schools by Type |       |            |       |             |       |             |       | Total # of Schools |       |
|-----------------------|---------------------------|-------|------------|-------|-------------|-------|-------------|-------|--------------------|-------|
|                       | Elementary                |       | El-Jr High |       | Junior High |       | Senior High |       | 01/02              | 02/03 |
|                       | 01/02                     | 02/03 | 01/02      | 02/03 | 01/02       | 02/03 | 01/02       | 02/03 |                    |       |
| 0 suspensions         | 49                        | 41    | 3          | 3     | 1           | 0     | 2           | 1     | 55                 | 45    |
| 1-5 suspensions       | 70                        | 63    | 6          | 5     | 2           | 0     | 2           | 1     | 80                 | 69    |
| 6-10 suspensions      | 10                        | 16    | 1          | 5     | 3           | 3     | 0           | 1     | 14                 | 25    |
| >10 suspensions       | 3                         | 11    | 7          | 8     | 24          | 26    | 14          | 15    | 48                 | 60    |

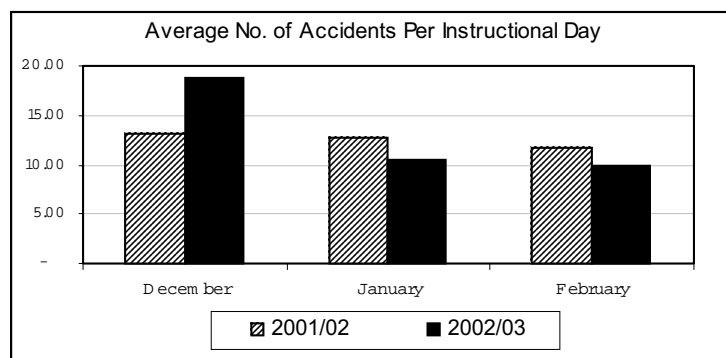
Notes regarding changes in school categories for the 2002-03 school year.

- (1) Jackson Heights and George P. Nicholson Schools were added to the Elementary category.
- (2) Sherbrooke was moved from the Junior High category to the Elementary-Junior High category.
- (3) Eastwood was moved from the Elementary-Junior High category to the Elementary category.
- (4) The Academy at King Edward, Avonmore, Oliver, and Talmud Torah were moved from the Elementary category to the Elementary-Junior High category.

### 5. STUDENT EXPULSIONS

|                       | Dec. '01 – Feb. '02 | Dec. '02 – Feb. '03 |
|-----------------------|---------------------|---------------------|
| (a) from the District | 0                   | 0                   |
| (b) from a School     | 35                  | 69                  |
| <b>Total</b>          | <b>35</b>           | <b>69</b>           |

### 6. ACCIDENTS TO STUDENTS DURING INSTRUCTIONAL DAYS



## B. STAFF

|                                   | <u>2001-02</u>  |                |                | <u>2002-03</u>  |                |                |
|-----------------------------------|-----------------|----------------|----------------|-----------------|----------------|----------------|
|                                   | <u>Sept. 30</u> | <u>Nov. 30</u> | <u>Feb. 28</u> | <u>Sept. 30</u> | <u>Nov. 30</u> | <u>Feb. 28</u> |
| <b>1. SCHOOLS</b>                 |                 |                |                |                 |                |                |
| Teaching                          |                 |                |                |                 |                |                |
| Elementary                        | 1,842           | 1,843          | 1,849          | 1,842           | 1,840          | 1,844          |
| Elementary/Junior High            | 455             | 468            | 467            | 449             | 451            | 451            |
| Elementary/Jr.High/Sr.High        | 257             | 259            | 264            | 324             | 327            | 327            |
| Junior High                       | 643             | 649            | 645            | 660             | 657            | 661            |
| Junior/Senior High                | 160             | 162            | 160            | 145             | 145            | 144            |
| Senior High                       | 789             | 797            | 791            | 790             | 792            | 790            |
| Bennett Centre                    | 2               | 2              | 2              | 2               | 2              | 2              |
| Institutions*                     | 122             | 122            | 142            | 145             | 146            | 149            |
| Temporary Replacements            | 40              | 34             | 47             | 38              | 46             | 53             |
| <b>TOTAL (F.T.E.)</b>             | <b>4,310</b>    | <b>4,336</b>   | <b>4,367</b>   | <b>4,395</b>    | <b>4,406</b>   | <b>4,421</b>   |
| Non-Teaching                      |                 |                |                |                 |                |                |
| Exempt                            | 109             | 116            | 114            | 114             | 115            | 117            |
| Support                           | 1,170           | 1,268          | 1,298          | 1,249           | 1,329          | 1,321          |
| Custodial                         | 496             | 493            | 495            | 492             | 497            | 503            |
| <b>TOTAL (F.T.E.)</b>             | <b>1,775</b>    | <b>1,877</b>   | <b>1,907</b>   | <b>1,855</b>    | <b>1,941</b>   | <b>1,941</b>   |
| <b>2. CENTRAL SERVICES**</b>      |                 |                |                |                 |                |                |
| Teaching Staff                    | 101             | 99             | 97             | 108.1           | 108.1          | 107.3          |
| Exempt                            | 316             | 318            | 325            | 329.0           | 326.7          | 322.7          |
| Support                           | 181             | 187            | 178            | 181.4           | 186.9          | 184.6          |
| Maintenance (incl. casual staff)  | 259             | 225            | 220            | 265.5           | 218.5          | 205.5          |
| Custodial                         | 38              | 45             | 41             | 41.2            | 41.6           | 40.6           |
| <b>TOTAL C.S. STAFF (F.T.E.)</b>  | <b>895</b>      | <b>874</b>     | <b>861</b>     | <b>925.2</b>    | <b>881.8</b>   | <b>860.7</b>   |
| <b>3. METRO COMMUNITY COLLEGE</b> |                 |                |                |                 |                |                |
| Teaching Staff                    | 7.0             | 6.9            | 6.9            | 6.4             | 6.4            | 6.4            |
| Exempt                            | 18.7            | 19.9           | 20.0           | 20.8            | 20.8           | 19.8           |
| Support                           | 25.1            | 25.1           | 24.1           | 28.9            | 25.9           | 26.3           |
| Custodial                         | 5.4             | 5.4            | 5.4            | 5.6             | 5.6            | 5.6            |
| <b>TOTAL (F.T.E.)</b>             | <b>56.2</b>     | <b>57.3</b>    | <b>56.4</b>    | <b>61.7</b>     | <b>58.7</b>    | <b>58.1</b>    |
| <b>4. DISTRICT TOTALS</b>         |                 |                |                |                 |                |                |
| Teaching                          | 4,418.0         | 4,441.9        | 4,470.9        | 4,509.5         | 4,520.5        | 4,534.7        |
| Non-Teaching                      | 2,618.2         | 2,702.4        | 2,720.5        | 2,727.4         | 2,767.0        | 2,746.1        |
| <b>TOTAL</b>                      | <b>7,036.2</b>  | <b>7,144.3</b> | <b>7,191.4</b> | <b>7,236.9</b>  | <b>7,287.5</b> | <b>7,280.8</b> |

\*Institutions includes all locations funded at actual cost.

## B. STAFF (Continued)

| <b>** CENTRAL SERVICES BREAKDOWN</b> |                |                |                |                |                  |                |
|--------------------------------------|----------------|----------------|----------------|----------------|------------------|----------------|
|                                      | <b>Teacher</b> | <b>Exempt</b>  | <b>Support</b> | <b>Maint.</b>  | <b>Custodial</b> | <b>Total</b>   |
| <b><u>September, 2002</u></b>        |                |                |                |                |                  |                |
| Instructional & Curric. Support      | 91.591         | 105.354        | 83.829         | --             | 26.625           | 307.399        |
| School & District Services           | 6.500          | 195.600        | 86.571         | 265.500        | 14.600           | 568.771        |
| Student Achievement                  | 4.000          | 1.000          | 2.000          | --             | --               | 7.000          |
| Superintendent's Area                | 6.000          | 27.000         | 9.000          | --             | --               | 42.000         |
| <b>Total September, 2002</b>         | <b>108.091</b> | <b>328.954</b> | <b>181.400</b> | <b>265.500</b> | <b>41.225</b>    | <b>925.170</b> |
| <b><u>November, 2002</u></b>         |                |                |                |                |                  |                |
| Instructional & Curric. Support      | 91.601         | 103.754        | 89.329         | --             | 27.625           | 312.309        |
| School & District Services           | 6.500          | 194.600        | 85.571         | 218.500        | 14.000           | 519.171        |
| Student Achievement                  | 4.000          | 1.000          | 3.000          | --             | --               | 8.000          |
| Superintendent's Area                | 6.000          | 27.400         | 9.000          | --             | --               | 42.400         |
| <b>Total November, 2002</b>          | <b>108.101</b> | <b>326.754</b> | <b>186.900</b> | <b>218.500</b> | <b>41.625</b>    | <b>881.880</b> |
| <b><u>February, 2003</u></b>         |                |                |                |                |                  |                |
| Instructional & Curric. Support      | 90.385         | 102.654        | 88.100         | ---            | 26.625           | 307.764        |
| School & District Services           | 6.500          | 191.600        | 84.671         | 205.500        | 14.000           | 502.271        |
| Student Achievement                  | 4.000          | 1.000          | 2.800          | --             | --               | 7.800          |
| Superintendent's Area                | 6.400          | 27.400         | 9.000          | --             | --               | 42.800         |
| <b>Total February 2003</b>           | <b>107.285</b> | <b>322.654</b> | <b>184.571</b> | <b>205.500</b> | <b>40.625</b>    | <b>860.635</b> |

### 5. LEAVES OF ABSENCE

|                              | <u>Teaching Staff</u> |                | <u>Non-Teaching Staff</u> |                |
|------------------------------|-----------------------|----------------|---------------------------|----------------|
|                              | <u>Feb./02</u>        | <u>Feb./03</u> | <u>Feb./02</u>            | <u>Feb./03</u> |
| (a) Maternity                | 40                    | 83             | 27                        | 30             |
| (b) Personal                 | 301                   | 285            | 118                       | 127            |
| (c) Workers' Compensation    | 0                     | 0              | 16                        | 22             |
| (d) Extended Disability      | 181                   | 175            | 102                       | 119            |
| (e) Prof. Improvement Leave  | 23                    | 22             | 1                         | 0              |
| (f) Exchange                 | 5                     | 3              | 0                         | 0              |
| (g) Secondment               | 28                    | 27             | 0                         | 0              |
| (h) Secondment to Edm.Public | 1                     | 0              | 5                         | 8              |
| (i) Deferred Salary Leave    | 8                     | 1              | 0                         | 0              |
| <b>TOTAL LEAVES</b>          | <b>587</b>            | <b>596</b>     | <b>269</b>                | <b>306</b>     |

### 6. FUTURE SECONDMENTS

|                            | <u>Teaching Staff</u> |  | <u>Non-Teaching Staff</u> |  |
|----------------------------|-----------------------|--|---------------------------|--|
|                            | <u>Feb/03</u>         |  | <u>Feb/03</u>             |  |
| Secondments from EPSB      | 2                     |  | 0                         |  |
| Extensions of Secondments  | 1                     |  | 0                         |  |
| Secondments to EPSB        | 1                     |  | 0                         |  |
| Ext.of Secondments to EPSB | 0                     |  | 0                         |  |

### 7. FUTURE EXCHANGES

|                              |   |   |
|------------------------------|---|---|
| Exchanges from EPSB          | 0 | 0 |
| Ext.of Secondments from EPSB | 0 | 0 |

---

**B. STAFF (Continued)****8. LOST TIME CLAIMS (All Staff)**

| <b>Injury</b>          | <b>Dec.-Feb.<br/><u>2002</u></b> | <b>Dec.-Feb.<br/><u>2003</u></b> |
|------------------------|----------------------------------|----------------------------------|
| (a) Head/Neck/Eyes     | 3                                | 5                                |
| (b) Hand/Finger/Wrist  | 1                                | 8                                |
| (c) Shoulder/Arm/Elbow | 4                                | 4                                |
| (d) Trunk              | 3                                | 3                                |
| (e) Back               | 9                                | 6                                |
| (f) Leg/Knee           | 4                                | 3                                |
| (g) Ankle/Foot         | 0                                | 4                                |
| (h) Multiple Injuries  | 8                                | 6                                |
| <b>TOTAL</b>           | <b><u>32</u></b>                 | <b><u>39</u></b>                 |

---

## C. SECURITY

### 1. INCIDENTS OF BREAK AND ENTER

|                    | December - February<br>2001 - 2002 | December - February<br>2002 - 2003 |
|--------------------|------------------------------------|------------------------------------|
| a. Break and Enter | 4                                  | 18                                 |
| b. Apprehensions   | 0                                  | 3                                  |

Break and enters occurred at Brander Gardens, Daly Grove, Dan Knott, Greenfield, Horse Hill, Jasper Place (2), L.Y. Cairns, Lauderdale, Parkdale, Parkview, Riverbend, Ritchie, Rosslyn, Sifton, Strathcona, Vimy Ridge, ITS Storage-R.H. David Building.

### 2. INCIDENTS OF VANDALISM

|                                    | December - February<br>2001 - 2002 | December - February<br>2002 - 2003 |
|------------------------------------|------------------------------------|------------------------------------|
| a. Reported Incidents of Vandalism | 90                                 | 175                                |
| b. Repair Costs                    | \$22,555                           | \$24,467                           |

### 3. RESTITUTION RECEIVED

During the period December 1, 2002 to February 28, 2003 no restitution was received for damages incurred through vandalism.

## D. CONSTRUCTION

### 2002 Major Maintenance Plan (MMP)

Projects in the 2002 MMP are undertaken from April 1, 2002 to March 31, 2003.

The Block Grant BQRP allocation for the 2002 plan is \$5,879,003. Approximately 70% of the projects are completed and 30% of the projects are in various stages of construction.

### 2001/2002 Capital Plan

Amiskwaciy Academy Gym Addition – The gym addition and associated work within the main building are complete with minor and seasonal deficiencies to be corrected.

Eastwood / Parkdale / Spruce Avenue Upgrades – Construction is behind schedule. The revised substantial completion date is April 2003. Seasonal deficiencies will be completed in June 2003.

George P. Nicholson School – Work on school is complete with the exception of seasonal deficiencies. Interior improvements within the Capital Health Authority (CHA) area were tendered by CHA in late February 2003 with work expected to commence April 2003.

Grandview Heights Addition and Modernization – All work within the areas renovated and new addition is complete with minor deficiencies to be corrected. Landscape deficiencies to be done in the spring.

J. Percy Page TeleLearning – Redesign in process with expected re-tender in April 2003. The opening is targeted for the first term of 2004 (January).

Jackson Heights Neighborhood School – Construction is complete and the school was open to receive students on November 25, 2002. The official school opening will be held on March 22, 2003.

Jasper Place Modernization – The construction manager is in place and sub-trade tendering is underway. Renovations are expected to commence April 2003. The target completion date is April 2005.

---

## **D. CONSTRUCTION (Continued)**

John A. McDougall Modernization – Phase I was completed in January 2003. The overall completion is targeted for November 2003.

Kildare Addition and Modernization – Renovations to the gymnasium, classrooms, councilor offices, student washrooms, science room, and administration areas have been completed. The addition has been completed and is occupied. The remaining areas, library, staff workroom and washrooms are under construction and scheduled for completion by mid April. There is seasonal exterior work to be completed in the spring.

McCauley Modernization – Renovations to the third floor and basement have been completed and the school has occupied these levels. The second floor is now under construction with completion of this level scheduled for April 8<sup>th</sup>. Construction on the first floor will commence at that time with a scheduled completion of late May. Exterior site work will take place in the spring.

Meyonohk Addition – The addition has been completed and the school has occupied the space. There is seasonal exterior site work to be completed in the spring.

Michael A. Kostek Addition – The addition has been completed and the school has occupied the space. There is seasonal exterior site work to be completed in the spring.

Ottewell Modernization – A portion of the asbestos abatement and music room demolition work was done in the summer 2002. The project will be tendered in two phases. The overall construction schedule is pending. Phase I scope tendering package is 75% complete and is expected to go for sub-trade tendering late March 2003. The overall anticipated completion is December 2003.

Queen Elizabeth CTS Upgrading – Project has been completed.

Terrace Heights Modernization – Substantial completion was given on August 15, 2002. Some minor deficiencies remain with an expectation that total completion will be achieved by March 31, 2003.

Victoria Redevelopment – Construction has been deferred. The concept planning phase has been completed.

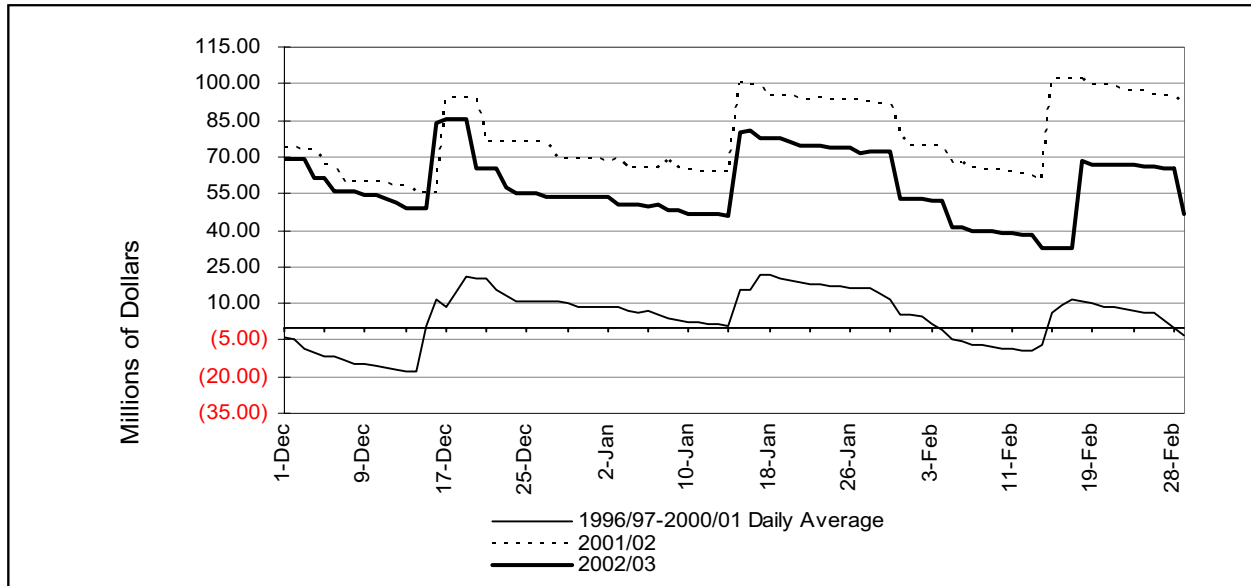
### **2002/2003 Capital Plan**

Winterburn Four Classroom Pod Addition – Tenders were received on February 11, 2003. The Board approved the tenders on February 25 and we are now waiting for approval of the tenders by Alberta Infrastructure. Construction start is anticipated by mid-March 2003 with completion for mid-August 2003. Alberta Infrastructure approved the Board's request to undertake the Winterburn School Addition in 2002-2003 instead of the originally approved 2003-2004.



## E. FINANCE

### 1. CASH FLOW



### 2. SCHOOL EQUIPMENT AMORTIZATION

|                                    | 2001-2002          | 2002-2003          |
|------------------------------------|--------------------|--------------------|
| <b>November 30, ending balance</b> | \$1,517,169        | \$1,788,308        |
| Amortization amount                | \$625,150          | \$403,382          |
| Interest                           | \$0                | \$0                |
| Payments                           | (\$152,451)        | (\$98,778)         |
| <b>February 28, ending balance</b> | <b>\$1,989,868</b> | <b>\$2,092,912</b> |

## F. TRANSPORTATION

(As of December 31, 2002)

| SERVICE                 |  | September<br>2001 | December<br>2001 | September<br>2002 | December<br>2002 |
|-------------------------|--|-------------------|------------------|-------------------|------------------|
| <b>YELLOW BUS</b>       |  |                   |                  |                   |                  |
| • Regular               | K – Gr. 6                                      | 1,569             | 1,654            | 1,533             | 1,631            |
|                         | Gr. 7 – Gr. 12                                 | 803               | 777              | 770               | 772              |
|                         | <b>SUB TOTAL</b>                               | <b>2,372</b>      | <b>2,431</b>     | <b>2,303</b>      | <b>2,403</b>     |
| • Programs of Choice    | K – Gr. 6                                      | 1,367             | 1,413            | 1,363             | 1,450            |
|                         | • Awasis<br>K – Gr. 6                          | 286               | 314              | 262               | 249              |
|                         | • Curb Service<br>K – Gr. 12                   | 2,895             | 2,874            | 3,034             | 2,991            |
|                         | • City Centre<br>K – Gr. 6                     |                   | 114              | 121               | 111              |
|                         | Project<br>Gr. 7-Gr. 9                         |                   | 33               |                   | 25               |
|                         | <b>SUB TOTAL</b>                               | <b>4,548</b>      | <b>4,748</b>     | <b>4,780</b>      | <b>4,826</b>     |
|                         | <b>YELLOW<br/>BUS<br/>TOTAL</b>                | <b>6,920</b>      | <b>7,179</b>     | <b>7,083</b>      | <b>7,229</b>     |
| <b>EDMONTON TRANSIT</b> |  |                   |                  |                   |                  |
| • Restricted Passes     | K – Gr. 12                                     | 18,312            | 17,387           | 19,358            | 18,109           |
|                         | • Awasis<br>Gr. 7 – Gr. 9                      | 70                | 70               | 85                | 67               |
|                         | <b>EDMONTON<br/>TRANSIT<br/>TOTAL</b>          | <b>18,382</b>     | <b>17,457</b>    | <b>19,443</b>     | <b>18,176</b>    |
| <b>PARENT PROVIDED</b>  |  |                   |                  |                   |                  |
|                         | Kindergarten                                   | 8                 | 9                | 10                | 8                |
|                         | Special Needs<br>(includes Early<br>Education) | 665               | 680              | 765               | 716              |
|                         | <b>PARENT<br/>PROVIDED<br/>TOTAL</b>           | <b>673</b>        | <b>689</b>       | <b>775</b>        | <b>724</b>       |
|                         | <b>GRAND<br/>TOTAL</b>                         | <b>25,975</b>     | <b>25,325</b>    | <b>27,301</b>     | <b>26,129</b>    |

## G. BUDGET AMENDMENTS TO CENTRAL DECISION UNIT BUDGETS

December 1, 2002 to February 28, 2003

| Decision Unit                       | Amount      | Description   |
|-------------------------------------|-------------|---|
| 362 Archives and Museum             | (38,000)    | Transfer funds to DU 378 Energy Management due to centralization of utility costs.  |
| 307 Property Management             | (142,200)   | Transfer funds to DU 378 Energy Management due to centralization of utility costs for Delton and Major General Griesbach schools (schools had opted out of the Utilities Project).                                    |
| 378 Energy Management               | 38,000      | Funds transferred from DU 362 Archives and Museum due to centralization of utility costs.   |
|                                     | 142,200     | Funds transferred from DU 307 Property Management due to centralization of utility costs for Delton and Major General Griesbach schools.  |
|                                     | 14,930,000  | Funds transferred from Holdback due to centralization of utility costs for schools.   |
| 327 Student Achievement Services    | (401,000)   | Transfer of AISI funds to DU 358 Planning.  |
| 358 Planning                        | 401,000     | Funds transferred from DU 327 Student Achievement Services for AISI projects.   |
| 371 Facilities Services             | 87,988      | Funds from Holdback – Maintenance Project funds for re-centralized schools (Major General Griesbach and Sherbrooke)   |
|                                     | 20,000      | Funds from Holdback for watermain break expenditures incurred on behalf of schools. Facilities authorized to expend up to \$20,000 a year to compensate schools for unforeseen waterline break repair costs.          |
|                                     | 375,000     | Funds from Holdback for air systems maintenance work being done at schools.   |
| 347 Information Technology Services | (2,500,000) | Projected Internal Revenue reduced – revised estimate on the number of PC sales.  |
| 324 Special Projects Financing      | (250,000)   | Transfer funds to DU 312 Building Operations for the first and second floor reconfiguration and conference centre.  |
| 312 Building Operations             | 250,000     | Funds transferred from DU 324 Special Projects Financing for the first and second floor reconfiguration and conference centre.  |
| 336 Curriculum                      | 400,000     | Funds from Holdback for the purpose of implementing the recommendations from the French Renewal Steering Committee for renewal of French Second Language and French Immersion instruction in Edmonton Public Schools. |