

EDMONTON PUBLIC SCHOOLS

November 13, 2007

TO: Board of Trustees

FROM: E. Schmidt, Superintendent of Schools

SUBJECT: 2006-07 District Satisfaction Survey Results

ORIGINATOR: T. Parker, Assistant Superintendent

RESOURCE
STAFF: Diane Brunton

INFORMATION

The district's annual satisfaction surveys, measuring the satisfaction levels of students, parents, and staff with critical areas of schooling, were first instituted in 1979, the first year of school-based budgeting. Since then, the survey results have been used by all schools and central decision units as one measure of accountability. The surveys serve as an annual measure of satisfaction within the district and measure positive and negative growth over time. They provide performance measures for the district's annual report to Alberta Education. The data provided by the surveys is used in conjunction with other information for budget planning, results review and the evaluation and modification of programs and initiatives.

The 2007 District Student-Parent-Staff Satisfaction Survey was administered in April. Respondent groups included a representative sample of students at each school, a sample of district parents and all district staff.

Students and staff completed their surveys throughout the period of April 23rd to May 04th. One hundred and fifteen schools were involved in the online survey project, while the remaining schools continued to use the traditional pen and paper method. Preliminary results were available to principals at the online schools on Dataview in late May. Complete results for all schools were accessible to principals on Dataview by the end of the school year. Hard copy survey results were delivered to principals at school start up in August.

As is done on alternate years, parents were surveyed at the district level rather than at the school level. Parent survey packages were mailed via Canada Post April 20th to a randomly selected sample of district parents. Parents were again given the option of returning the survey through the mail, or completing it online. Slightly over fourteen percent of the completed parent surveys were submitted over the Internet, a substantial increase over the six percent received last year by this method.

Student, parent, school staff and principal groups continue to express positive response to most survey items. Overall positive response remains constant for these groups with only minimal shifts in overall averages. Central staff continue to be the least positive group, and exhibit the greatest decrease in overall average.

SUMMARY OF SURVEY ANALYSIS

STUDENTS

1. Grades 2-6 Students

Elementary students express continued positive response to the majority of survey items with very little change when compared to the previous year. They are very positive in regards to knowing the school rules and that the teacher expects them to do their best. The area showing the least positive response concerns whether most students in the classroom follow the classroom rules.

2. Grades 7-9 Students

There are slight increases in positive response to many of the survey questions. Junior high students express a continuing strong belief that they are expected to do their best. They are least positive concerning whether other students follow the school rules for behaviour out of the classroom; however, this question also registers the greatest increase in positive response in comparison to last year:

3. Grades 10-12 Students

High school students convey little change in their opinions on most of the survey areas, with only slight increases and decreases being displayed. An upward trend is seen concerning students having confidence in their principal. Students are very positive in regards to knowing how they are expected to behave in school. This group is least positive about students following the school's rules for behaviour out of the classroom.

K-12 PARENTS

Parents continue to show high levels of satisfaction with their child's school and the education their child is receiving. There is limited change in positive response from last year with most increases and decreases falling within the +/-5 range. The greatest increase in positive response is in regards to the yellow bus service provided at their child's school, although this is tempered by the high no response rate (82%NR). Parents are very satisfied with the amount of information they receive on how their child is expected to behave. The area showing the lowest degree of positive response concerns the level of funding for public education although it has been maintained in comparison to last year.

STAFF

1. School Staff

School staff express increased satisfaction with their opportunities for professional development and with the use of money in the district. Their confidence in the board of trustees shows a decrease from the previous year. They feel very positive that their school is focused on student achievement. School staff are least positive about having opportunities for input into district level decisions which affect them and their job.

2. Principals

Principals remain the most positive of all the staff groups. Their responses show the most fluctuation when compared to last year. Substantial increases in positive response are seen regarding the use of money in the district and with the services provided by Student Achievement. Responses also reflect increased satisfaction with the services from

International Programs and Facilities as well as with the financial information they receive. Positive response shows the greatest decreases in the areas regarding principals' confidence in the board of trustees and with the availability of appropriately qualified staff for special needs programs. A slight upward trend is seen concerning the extent to which data gathered from time spent in the classroom assists in making decisions regarding professional development activities.

3. Central Services

Central services staff are the least positive of all staff groups surveyed. Most survey items show a decline in positive response in comparison to last year. A notable decrease is seen regarding confidence in the board of trustees. Downward trends in satisfaction are seen in a number of areas including: the information shared about department happenings; the use of money in central services; the cleanliness of the building; the district's mission is communicated clearly; the district is a good place to work; confidence in the board of trustees. Staff do appear to be increasingly more satisfied with their opportunities for professional development. These trends are evidenced in the Central Services graphs in Appendix I.

Detailed multiyear survey results are provided in graph form in Appendix I.

DB:

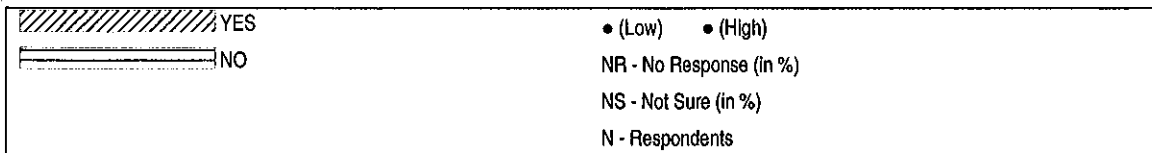
APPENDIX I - District Satisfaction Survey Results 2002-2007

DISTRICT SATISFACTION SURVEY RESULTS 2002-2007

STUDENTS GRADES 2-6

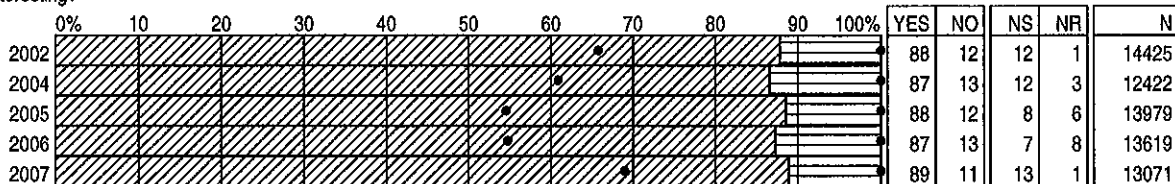
BY QUESTION

2-6 STUDENTS
DISTRICT TOTAL

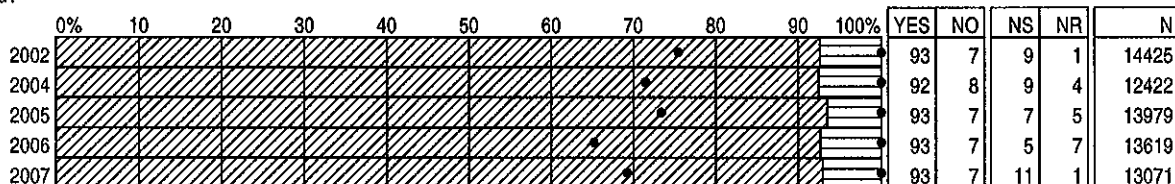


Note: Graph percentages are based on committed responses

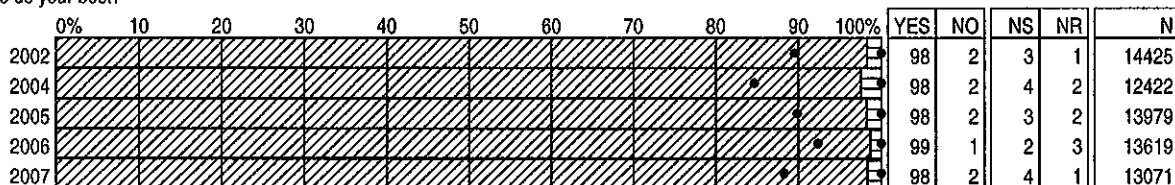
1) Do you find your school work interesting?



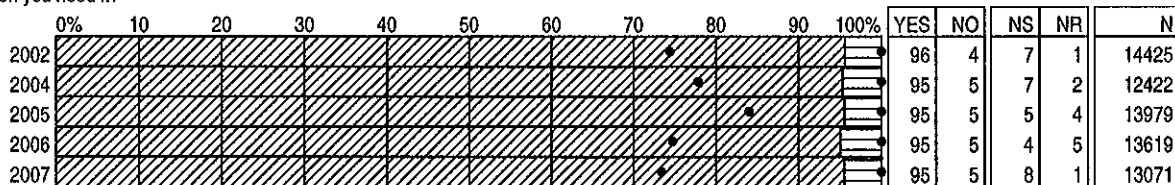
2) Is your report card helpful to you?



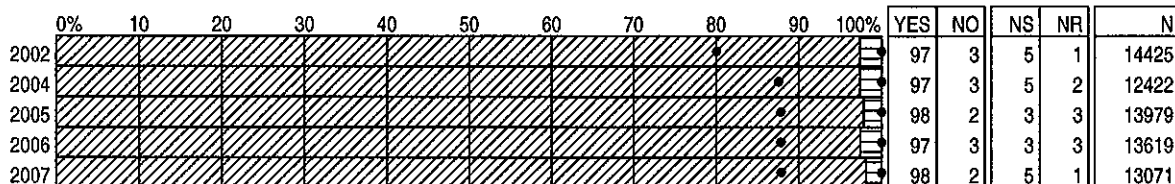
3) Does your teacher expect you to do your best?



4) Does your teacher help you when you need it?



5) Do you know the school rules?



* Surveys not conducted in 2003
 * 2004 results do not include Grade 4 students
 * Results weighted

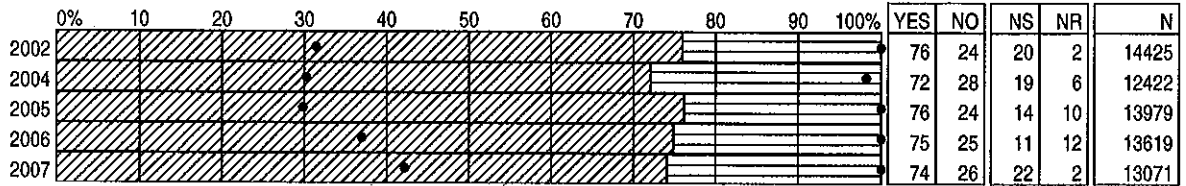
DISTRICT SATISFACTION SURVEY RESULTS 2002-2007

STUDENTS GRADES 2-6

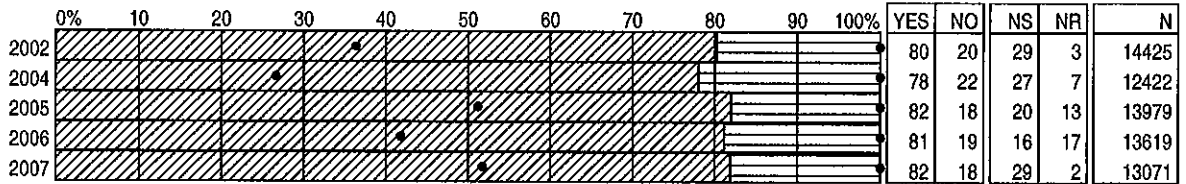
BY QUESTION

2-6 STUDENTS
DISTRICT TOTAL

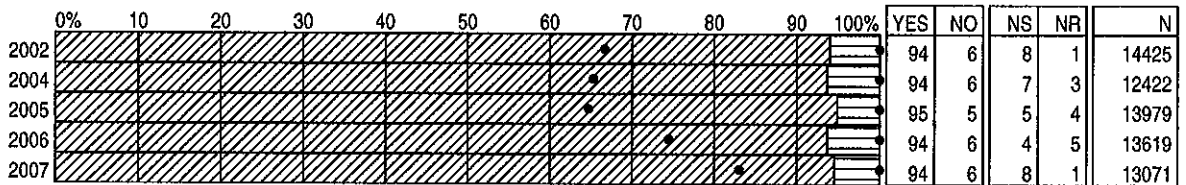
6) Do most of the students in your class follow the classroom rules?



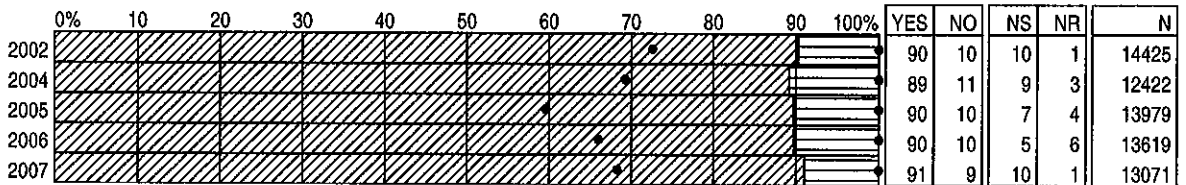
7) Do most of the students in your school follow the school rules?



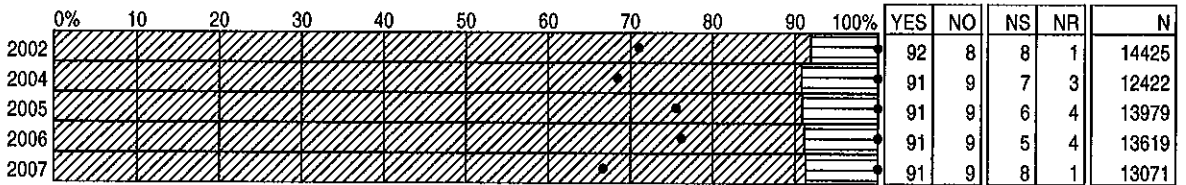
8) Do you feel safe in school?



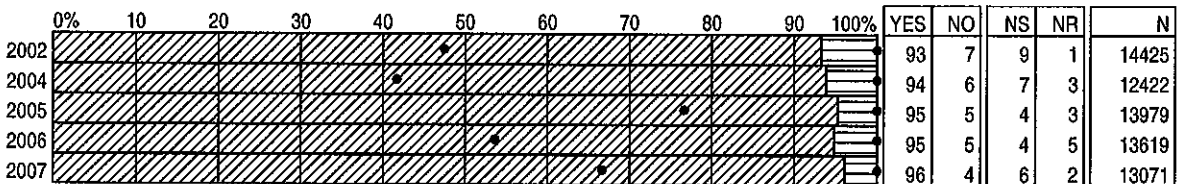
9) Do you feel safe during recess time?



10) Do you feel safe on the way to and from school?



11) Is your principal a good leader?



* Surveys not conducted in 2003
 * 2004 results do not include Grade 4 students
 * Results weighted

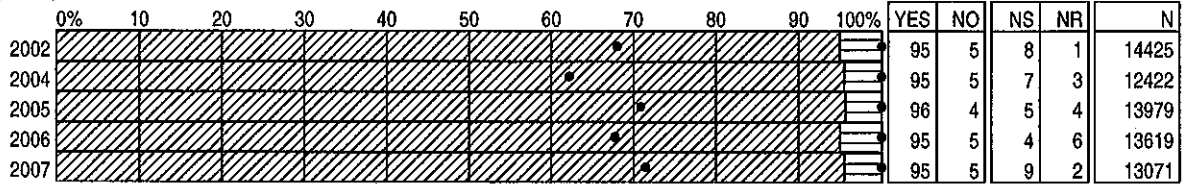
DISTRICT SATISFACTION SURVEY RESULTS 2002-2007

STUDENTS GRADES 2-6

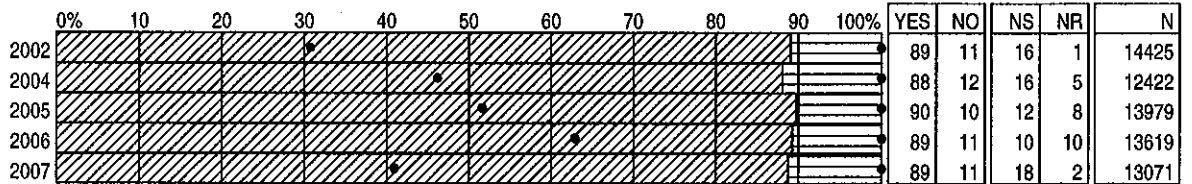
BY QUESTION

2-6 STUDENTS
DISTRICT TOTAL

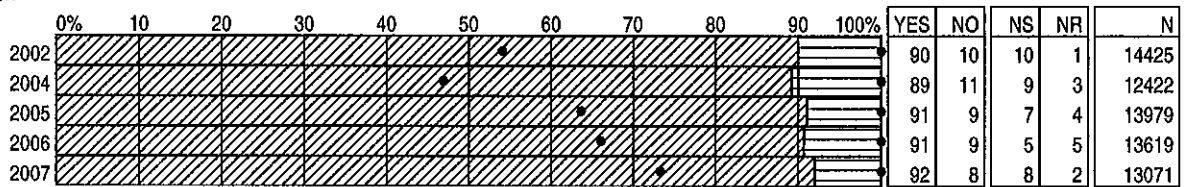
12) Are the people in the office helpful to you?



13) Is your school clean?



14) Do you like being in your school?



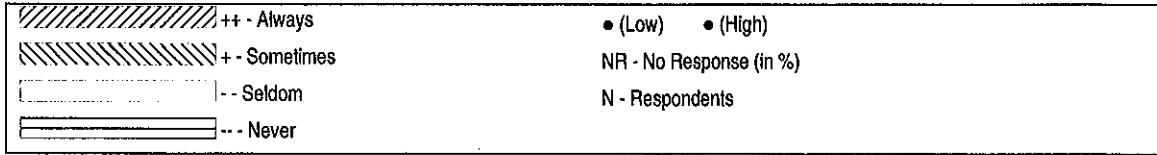
* Surveys not conducted in 2003
 * 2004 results do not include Grade 4 students
 * Results weighted

DISTRICT SATISFACTION SURVEY RESULTS 2002-2007

STUDENTS GRADES 7-9

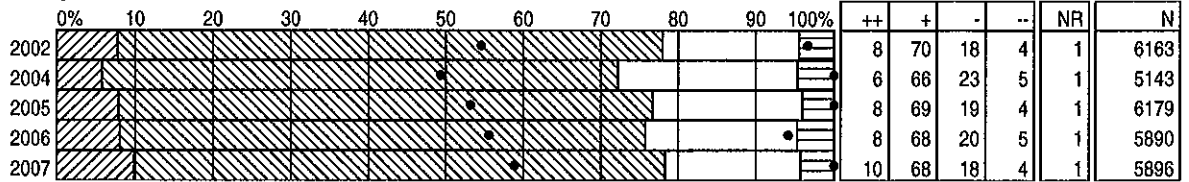
BY QUESTION

7-9 STUDENTS
DISTRICT TOTAL

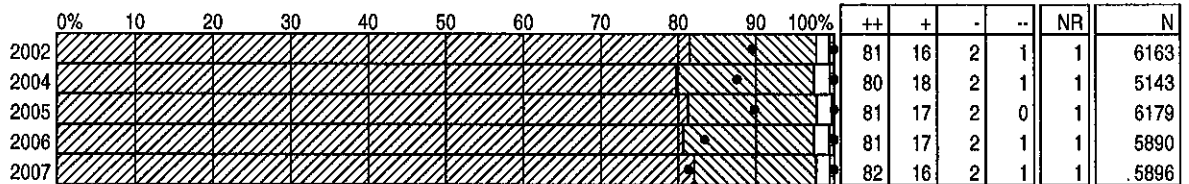


Note: Graph percentages are based on committed responses

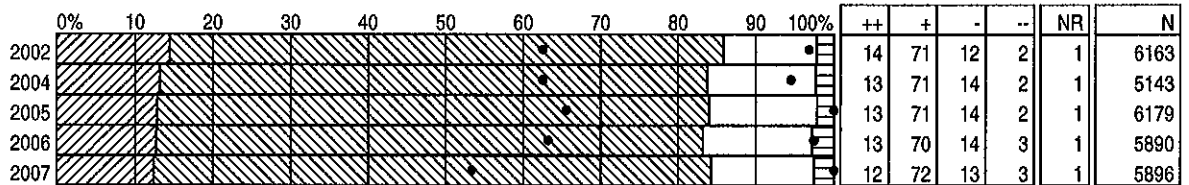
1) Do you find your school work interesting?



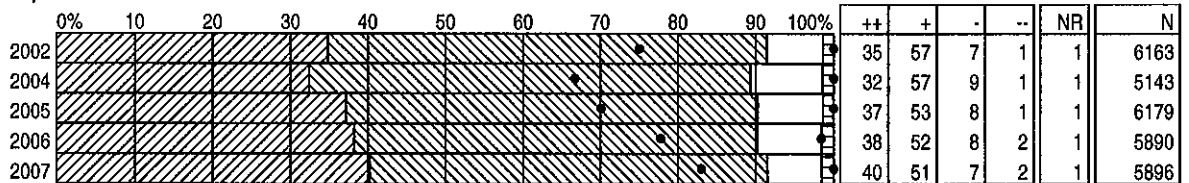
2) Are you expected to do your best?



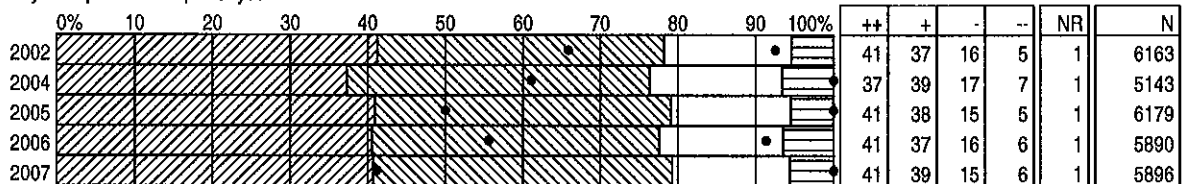
3) Are your classes challenging?



4) Are you clear as to what you are expected to learn?



5) Is the information you receive from your report card helpful to you?



* Surveys not conducted in 2003

* Grade 7 students are not included in the survey for 2004

* Results weighted

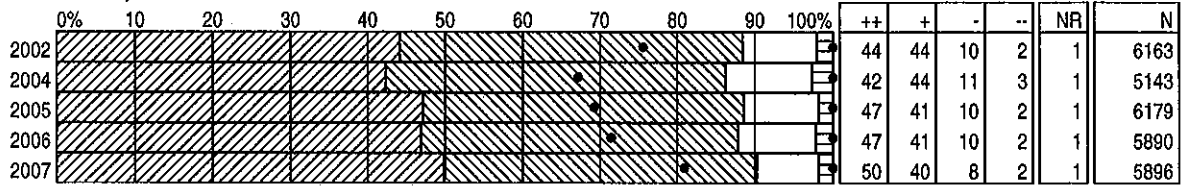
DISTRICT SATISFACTION SURVEY RESULTS 2002-2007

STUDENTS GRADES 7-9

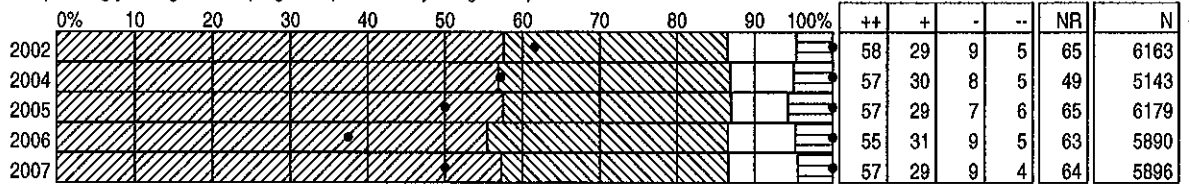
BY QUESTION

7-9 STUDENTS
DISTRICT TOTAL

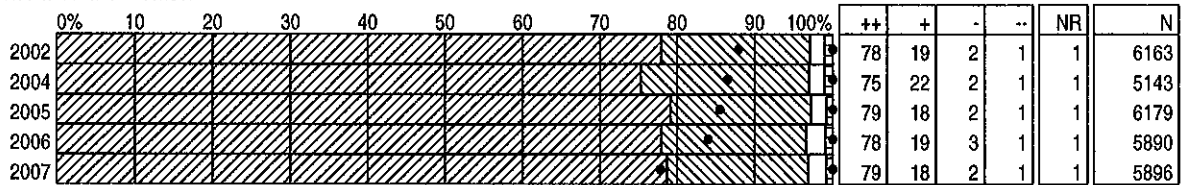
6) Overall, do you get help when you need it from your teachers?



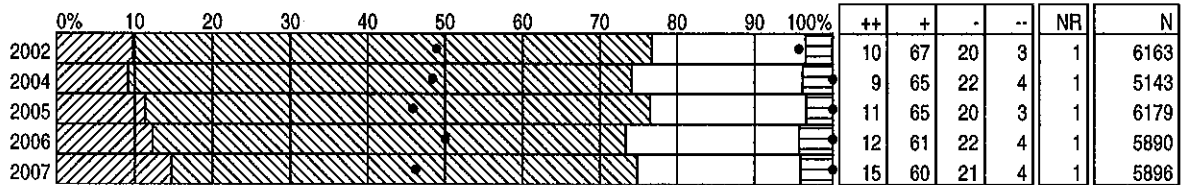
7) Do you get the help that you need in planning your high school program? (Answer only if in grade 9)



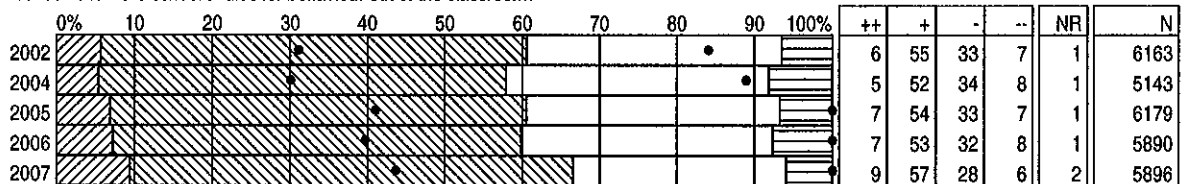
8) Do you know how you are expected to behave in school?



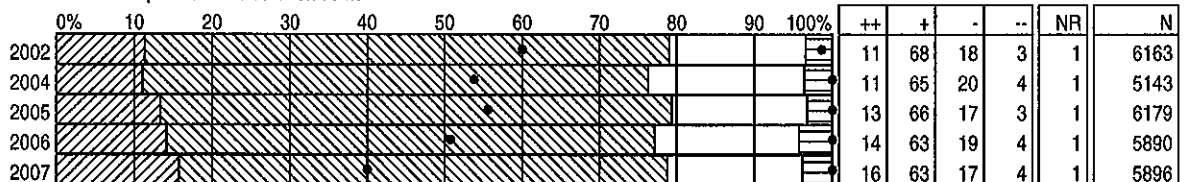
9a) Do most of the students at your school follow the school's rules for behaviour in the classroom?



9b) Do most of the students at your school follow the school's rules for behaviour out of the classroom?



10a) Do most of the students at your school show respect towards other students?



* Surveys not conducted in 2003

* Grade 7 students are not included in the survey for 2004

* Results weighted

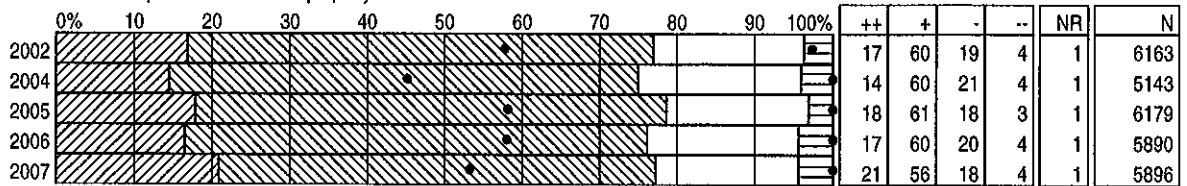
DISTRICT SATISFACTION SURVEY RESULTS 2002-2007

STUDENTS GRADES 7-9

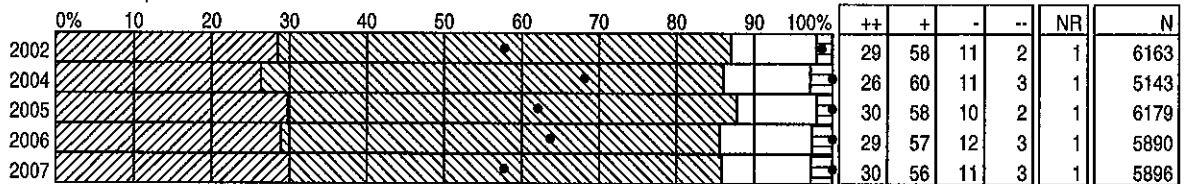
BY QUESTION

7-9 STUDENTS
DISTRICT TOTAL

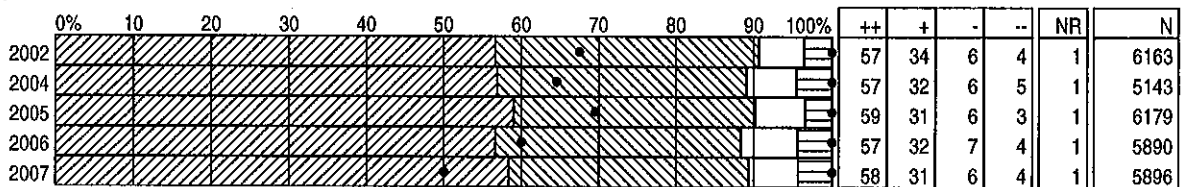
10b) Do most of the students at your school show respect towards school property?



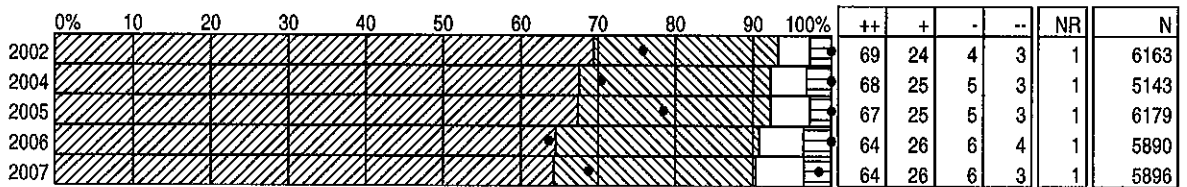
10c) Do most of the students at your school show respect towards school staff?



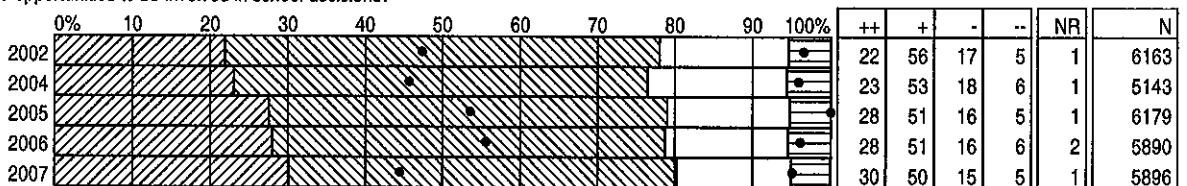
11) Do you feel safe in your school?



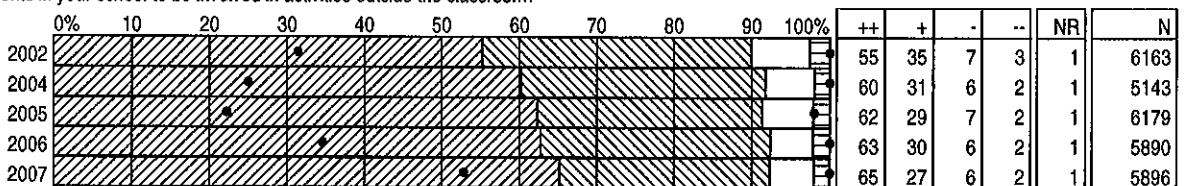
12) Do you feel safe on the way to and from school?



13) Do students in your school have opportunities to be involved in school decisions?



14) Are there opportunities for students in your school to be involved in activities outside the classroom?



* Surveys not conducted in 2003

* Grade 7 students are not included in the survey for 2004

* Results weighted

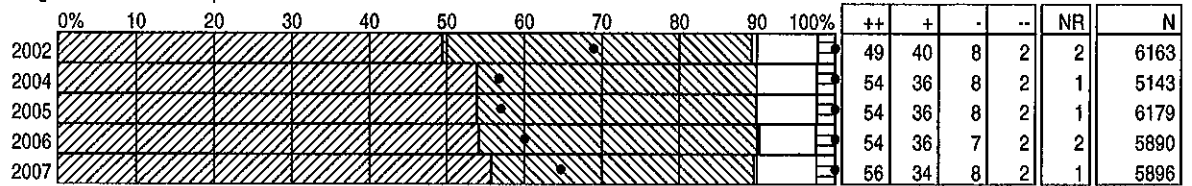
DISTRICT SATISFACTION SURVEY RESULTS 2002-2007

STUDENTS GRADES 7-9

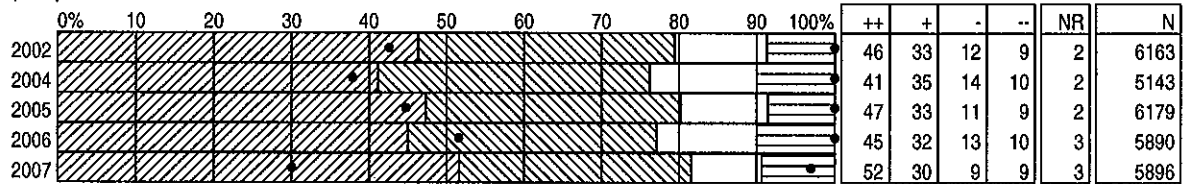
BY QUESTION

7-9 STUDENTS
DISTRICT TOTAL

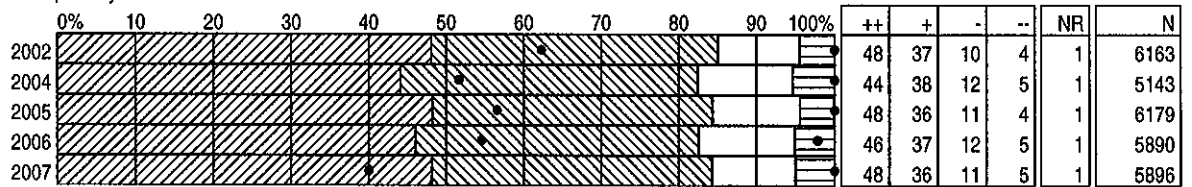
15) Do students in your school get recognition for their accomplishments?



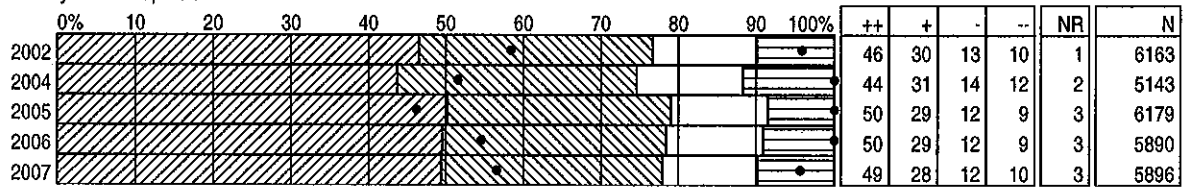
16) Do you have confidence in your principal?



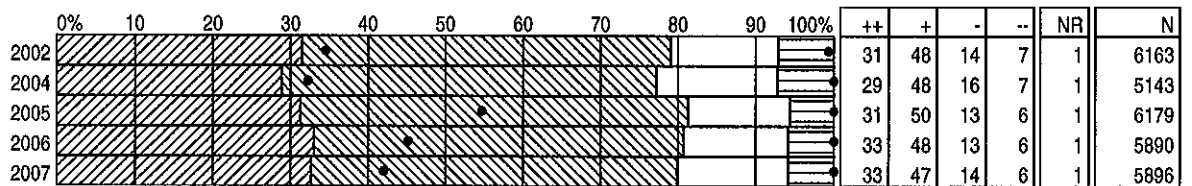
17) Are the people in the school office helpful to you?



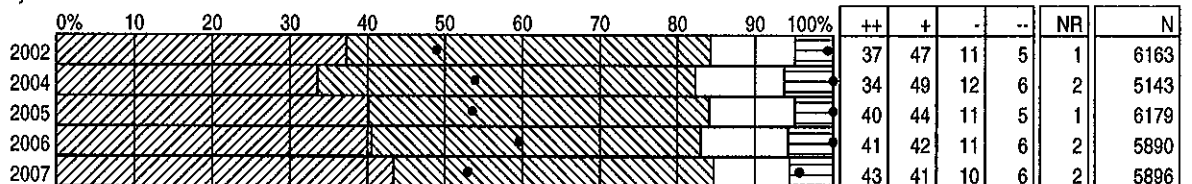
18) Is there a staff member you can talk if you have a problem?



19) Is your school clean?



20) In general, are you satisfied with your school?



* Surveys not conducted in 2003

* Grade 7 students are not included in the survey for 2004

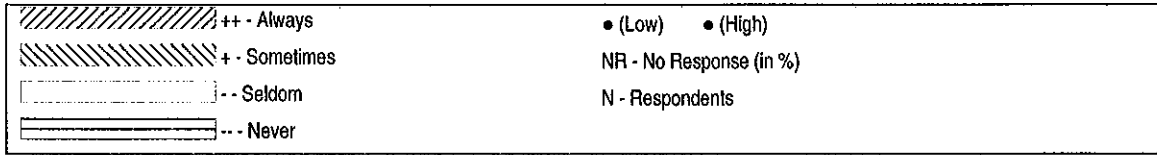
* Results weighted

DISTRICT SATISFACTION SURVEY RESULTS 2002-2007

STUDENTS GRADES 10-12

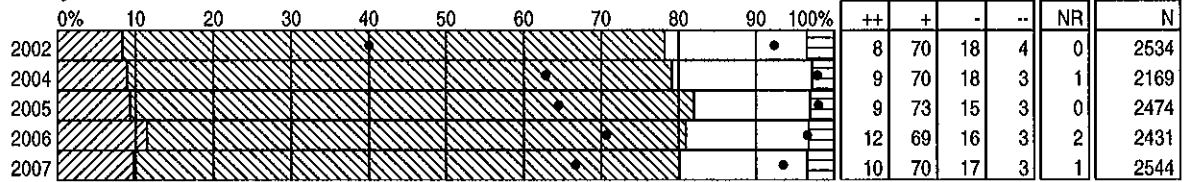
BY QUESTION

10-12 STUDENTS
DISTRICT TOTAL

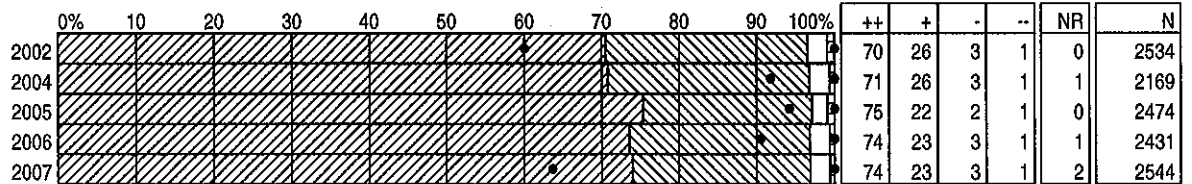


Note: Graph percentages are based on committed responses

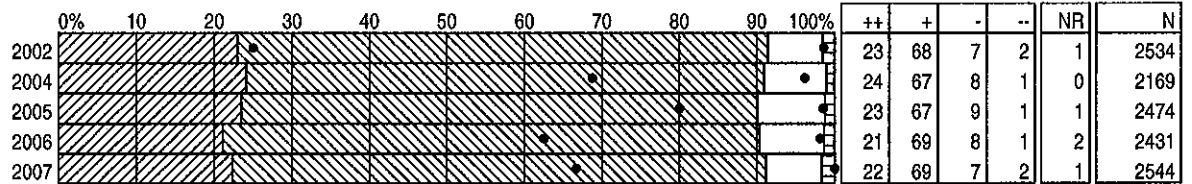
1) Do you find your school work interesting?



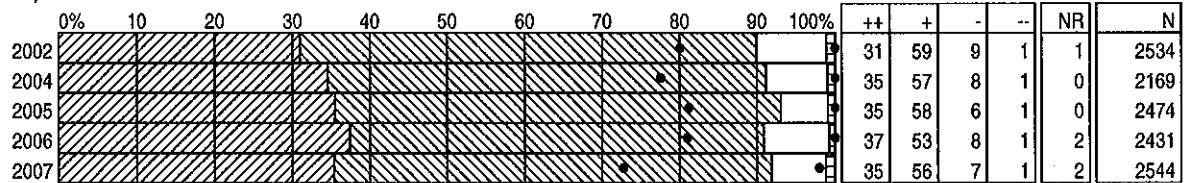
2) Are you expected to do your best?



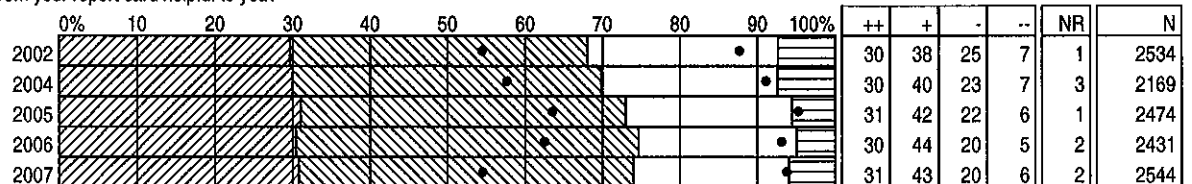
3) Are your classes challenging?



4) Are you clear as to what you are expected to learn?



5) Is the information you receive from your report card helpful to you?



* Surveys not conducted in 2003
 * 2004 results do not include Grade 10 students
 * Results weighted

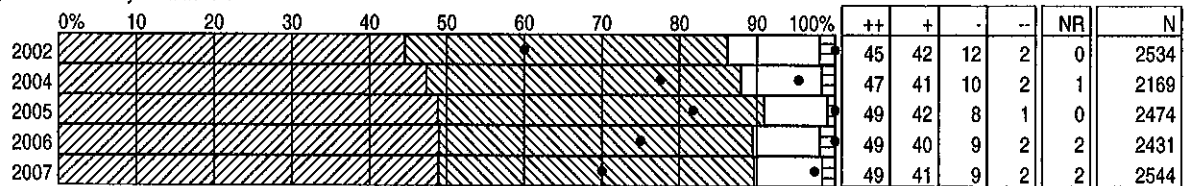
DISTRICT SATISFACTION SURVEY RESULTS 2002-2007

STUDENTS GRADES 10-12

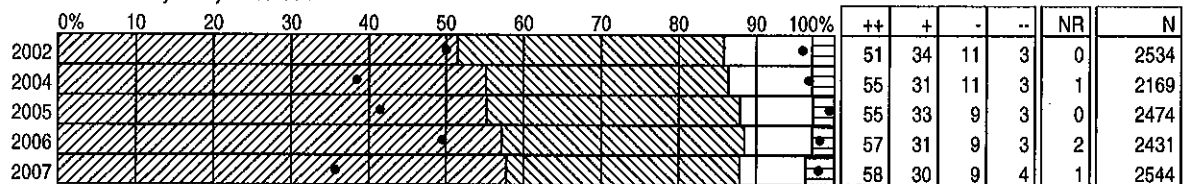
BY QUESTION

10-12 STUDENTS
DISTRICT TOTAL

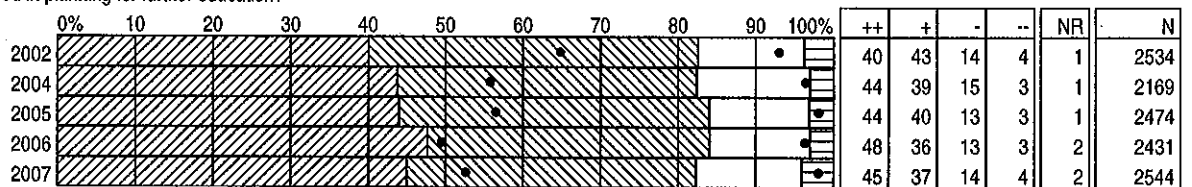
6) Overall, do you get help when you need it from your teachers?



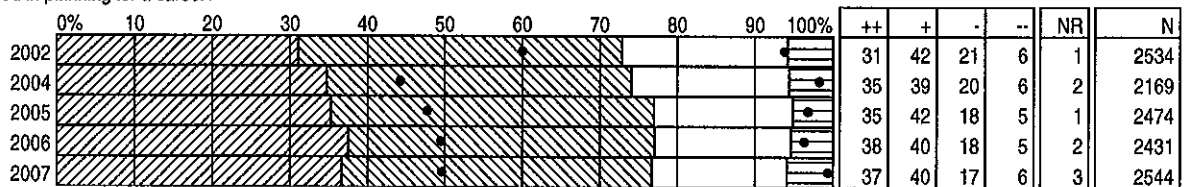
7) Do you have enough variety of courses available to you at your school?



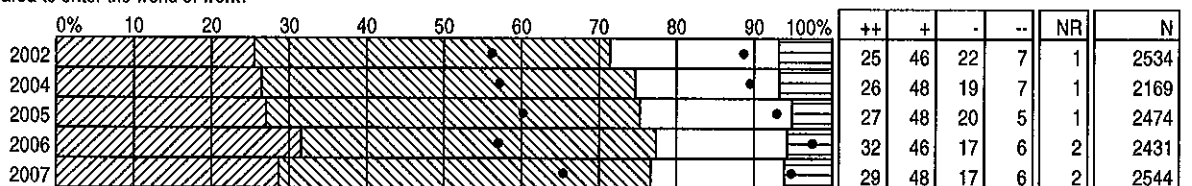
8) Do you get the help that you need in planning for further education?



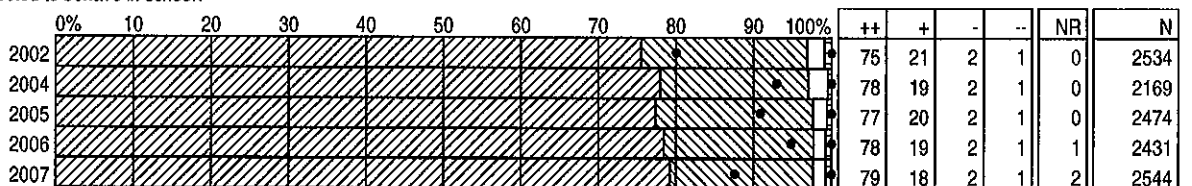
9) Do you get the help that you need in planning for a career?



10) Do you feel you are being prepared to enter the world of work?



11) Do you know how you are expected to behave in school?



* Surveys not conducted in 2003
 * 2004 results do not include Grade 10 students
 * Results weighted

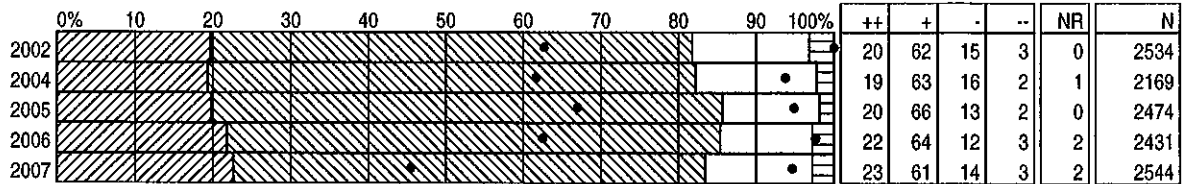
DISTRICT SATISFACTION SURVEY RESULTS 2002-2007

STUDENTS GRADES 10-12

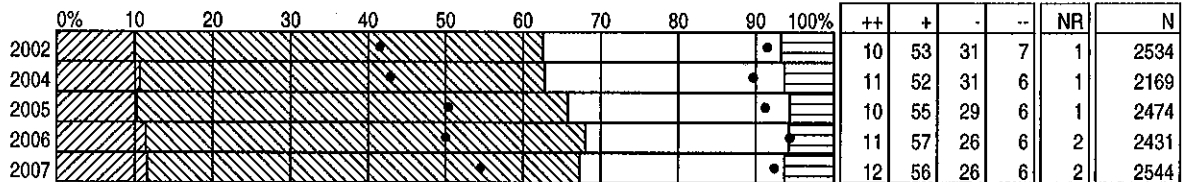
BY QUESTION

10-12 STUDENTS
DISTRICT TOTAL

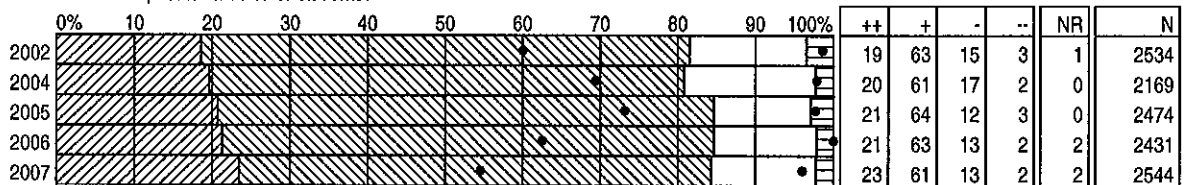
12a) Do most of the students at your school follow the school's rules for behaviour in the classroom?



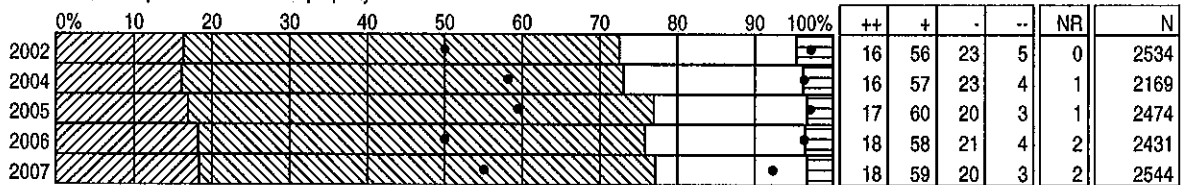
12b) Do most of the students at your school follow the school's rules for behaviour out of the classroom?



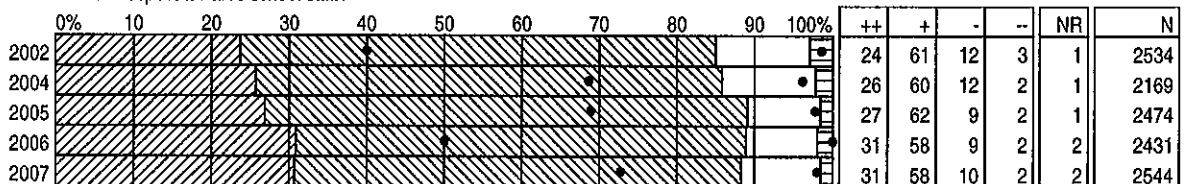
13a) Do most of the students at your school show respect towards other students?



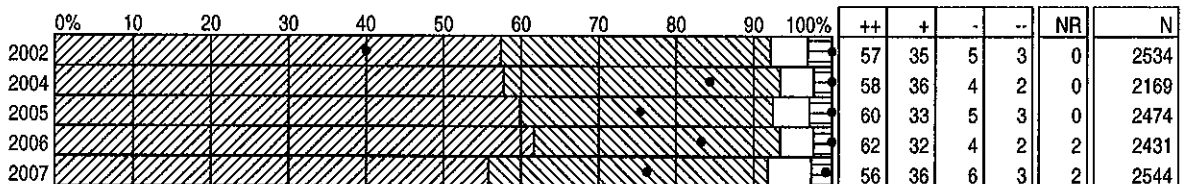
13b) Do most of the students at your school show respect towards school property?



13c) Do most of the students at your school show respect towards school staff?



14) Do you feel safe in your school?



* Surveys not conducted in 2003
 * 2004 results do not include Grade 10 students
 * Results weighted

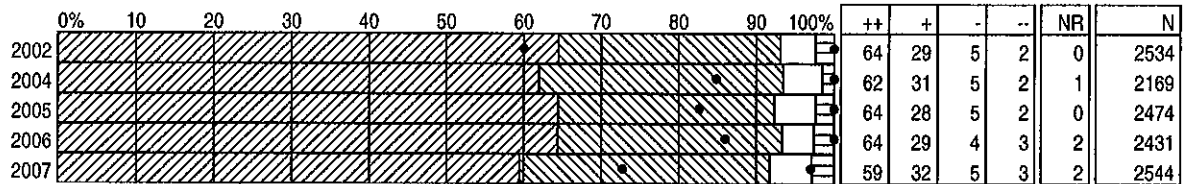
DISTRICT SATISFACTION SURVEY RESULTS 2002-2007

STUDENTS GRADES 10-12

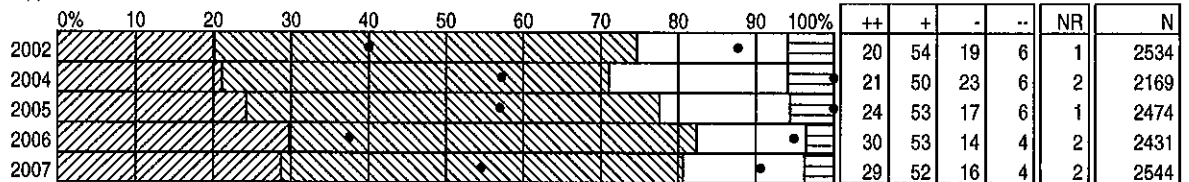
BY QUESTION

10-12 STUDENTS
DISTRICT TOTAL

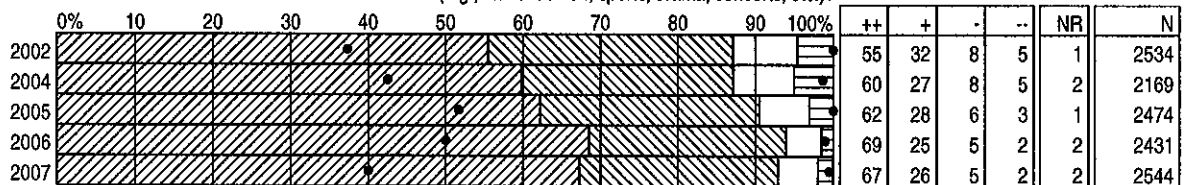
15) Do you feel safe on the way to and from school?



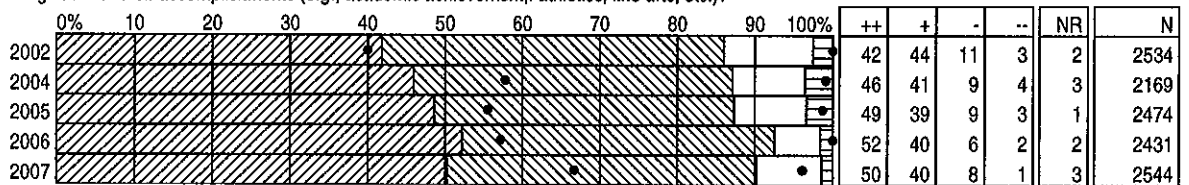
16) Do students in your school have opportunities to be involved in school decisions?



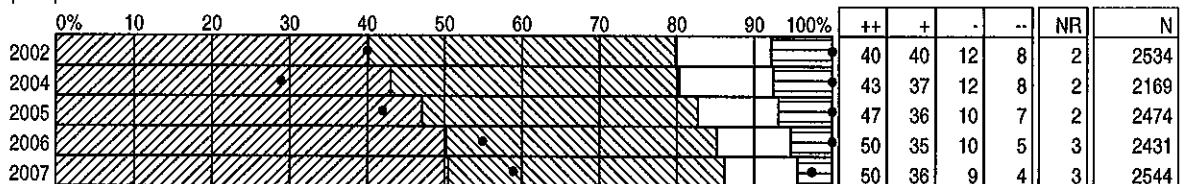
17) Are there opportunities in your school to be involved in activities outside the classroom (e.g., student union, sports, drama, concerts, etc.)?



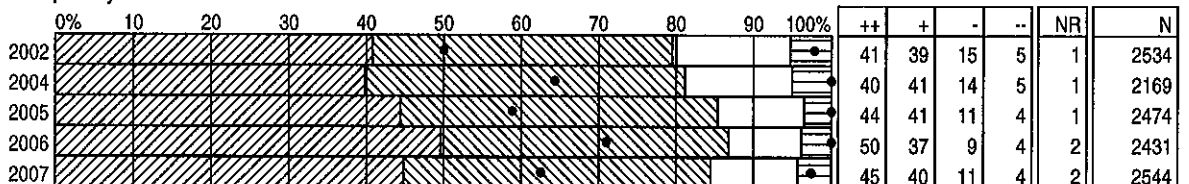
18) Do students in your school get recognition for their accomplishments (e.g., academic achievement, athletics, fine arts, etc.)?



19) Do you have confidence in your principal?



20) Are the people in the school office helpful to you?



* Surveys not conducted in 2003
 * 2004 results do not include Grade 10 students
 * Results weighted

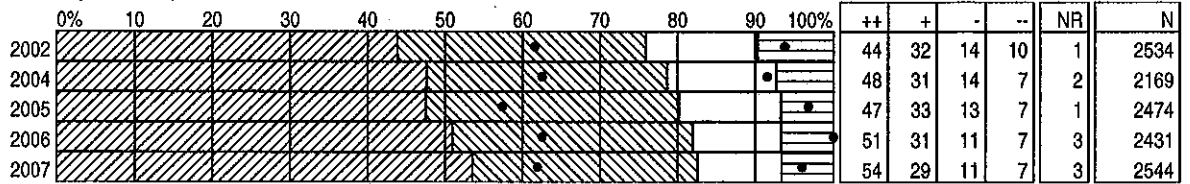
DISTRICT SATISFACTION SURVEY RESULTS 2002-2007

STUDENTS GRADES 10-12

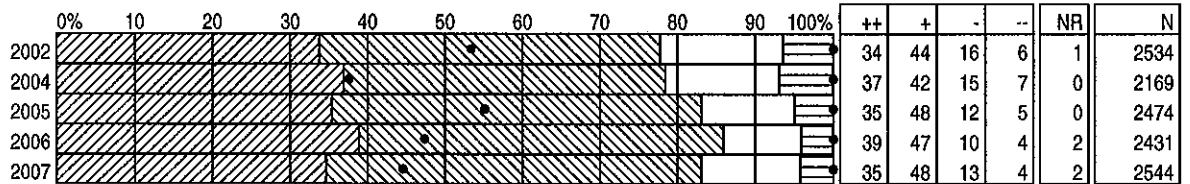
BY QUESTION

10-12 STUDENTS
DISTRICT TOTAL

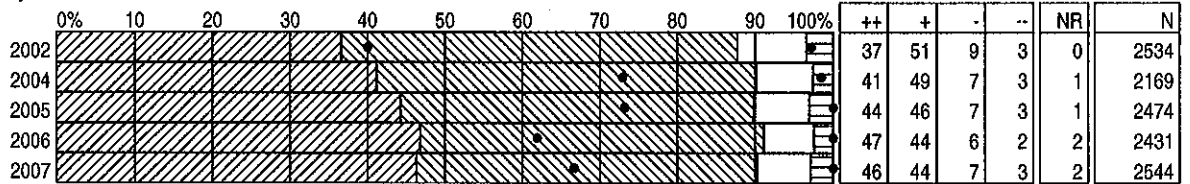
21) Is there a staff member you can talk to if you have a problem?



22) Is your school clean?



23) In general, are you satisfied with your school?



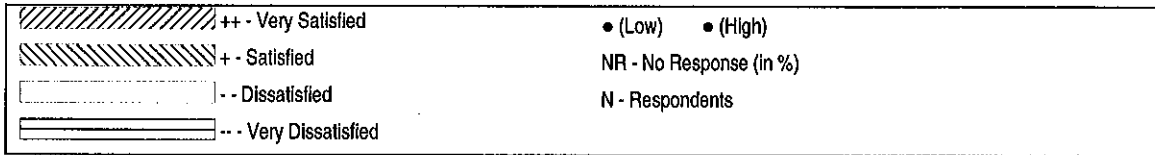
* Surveys not conducted in 2003
 * 2004 results do not include Grade 10 students
 * Results weighted

DISTRICT SATISFACTION SURVEY RESULTS 2002-2007

K-12 DISTRICT PARENTS

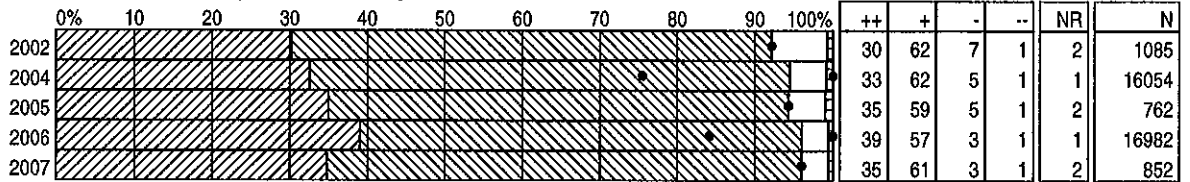
BY QUESTION

PARENTS
DISTRICT TOTAL

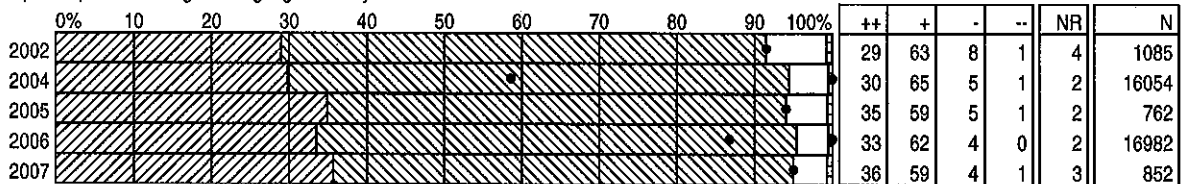


Note: Graph percentages are based on committed responses

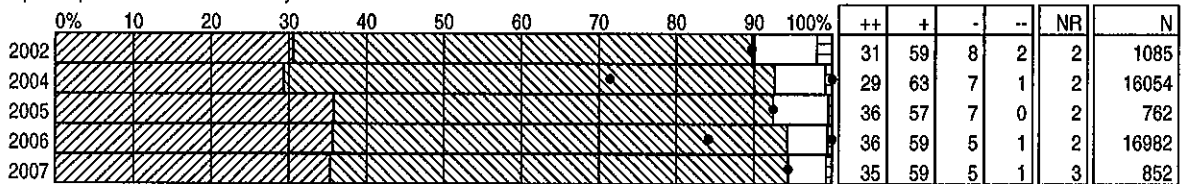
1) How satisfied are you with the overall quality of education that your child is receiving at school?



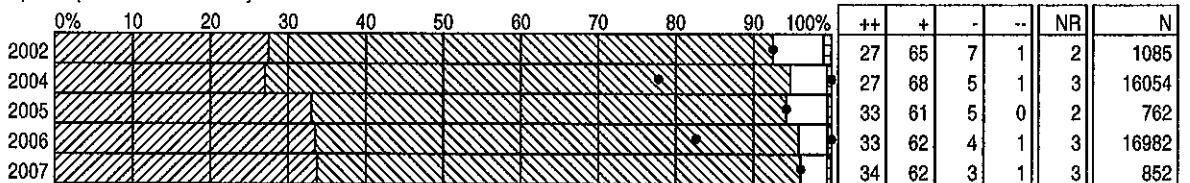
2a) How satisfied are you with the emphasis placed on English Language Arts at your child's school?



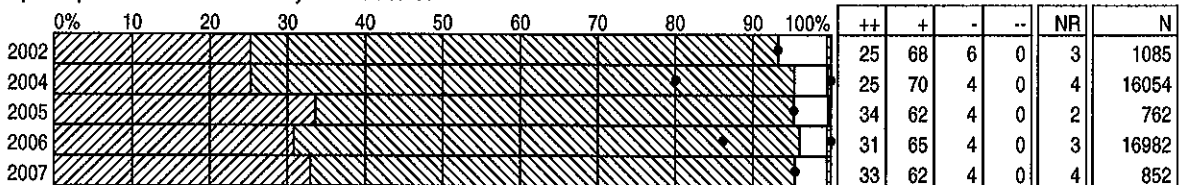
2b) How satisfied are you with the emphasis placed on Mathematics at your child's school?



2c) How satisfied are you with the emphasis placed on Science at your child's school?



2d) How satisfied are you with the emphasis placed on Social Studies at your child's school?



* 2004 results do not include Grades 4, 7, 10

* Results weighted

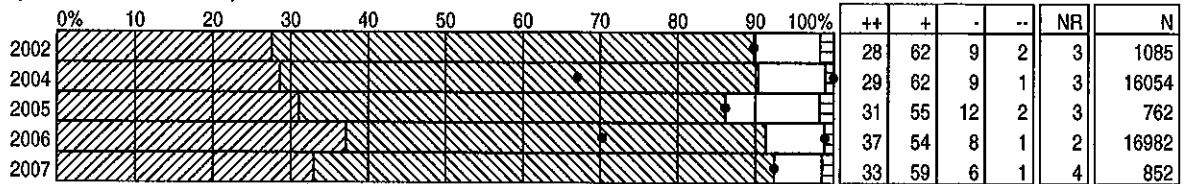
DISTRICT SATISFACTION SURVEY RESULTS 2002-2007

K-12 DISTRICT PARENTS

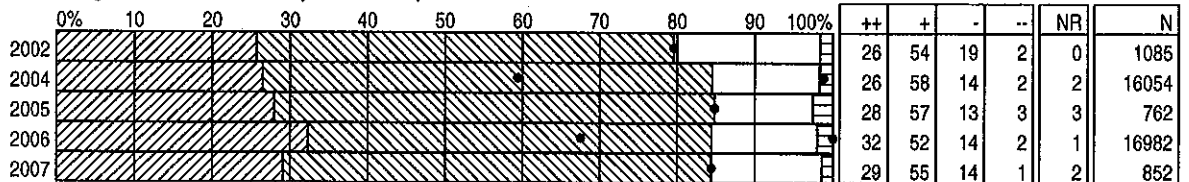
BY QUESTION

PARENTS
DISTRICT TOTAL

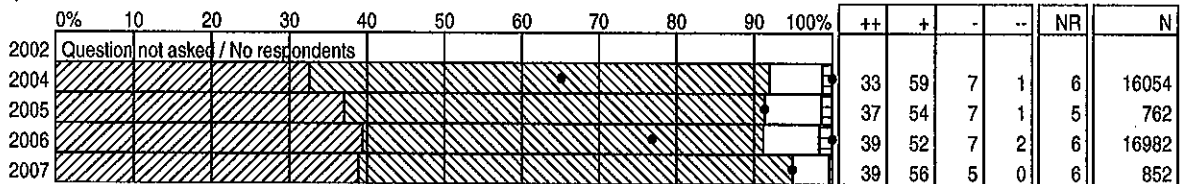
3) How satisfied are you with the programs/courses available in your child's school?



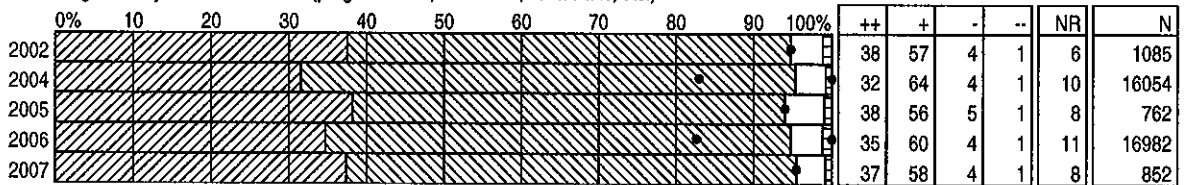
4) How satisfied are you that you receive enough information about what your child is expected to learn?



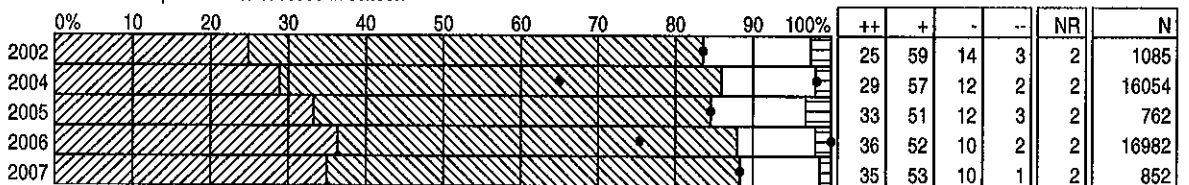
5) How satisfied are you that staff in your child's school work as a team?



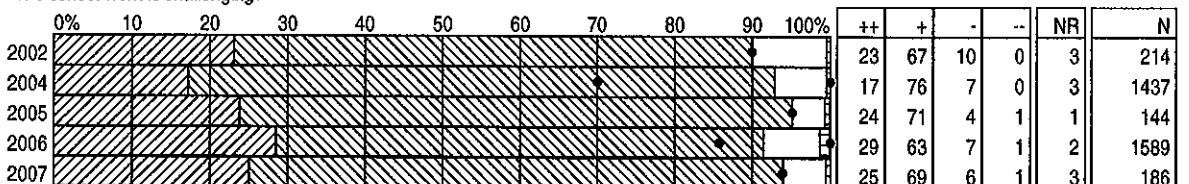
6) How satisfied are you with the non-teaching staff at your child's school? (program aides, office staff, custodians, etc.)



7) How satisfied are you that your child receives the help needed to succeed in school?



8) How satisfied are you that your child's school work is challenging?



* 2004 results do not include Grades 4, 7, 10

* Results weighted

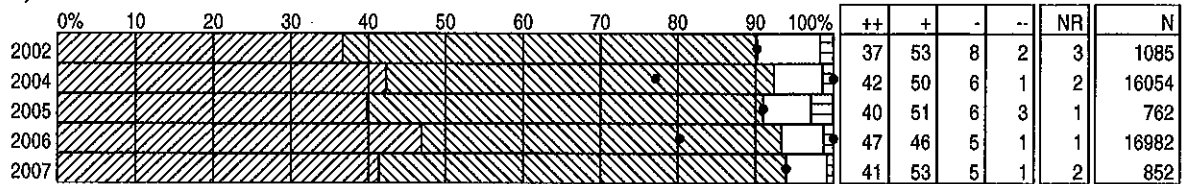
DISTRICT SATISFACTION SURVEY RESULTS 2002-2007

K-12 DISTRICT PARENTS

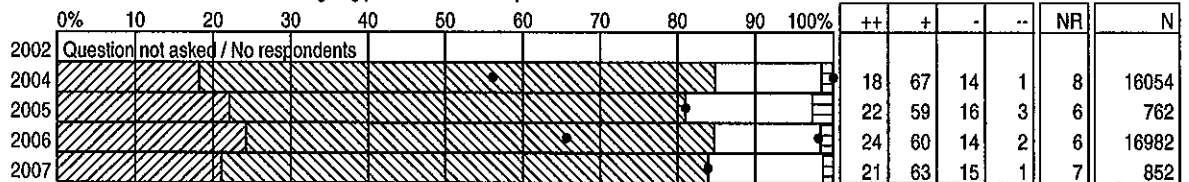
BY QUESTION

PARENTS
DISTRICT TOTAL

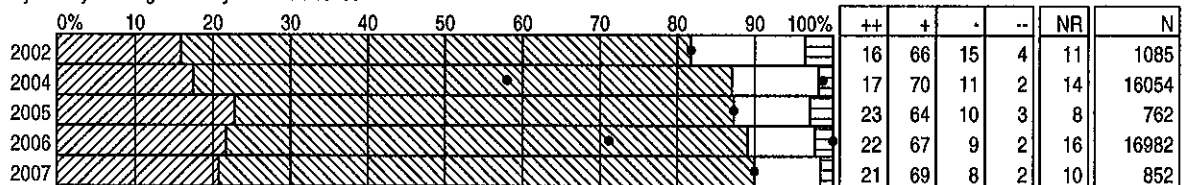
9) Overall, how satisfied are you with your child's teachers?



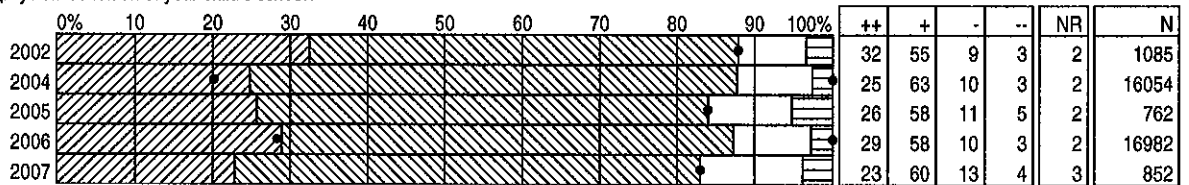
10) How satisfied are you with the information shared about the school's ongoing professional development?



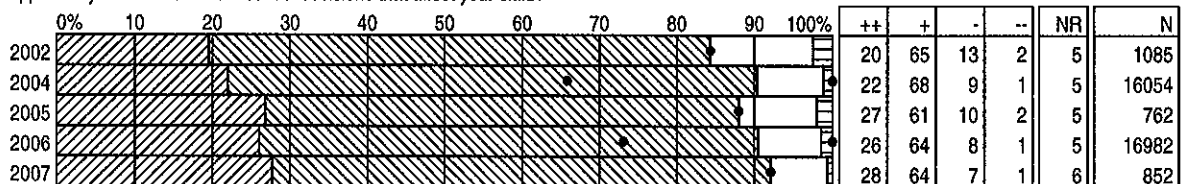
11) How satisfied are you with the way money is being used in your child's school?



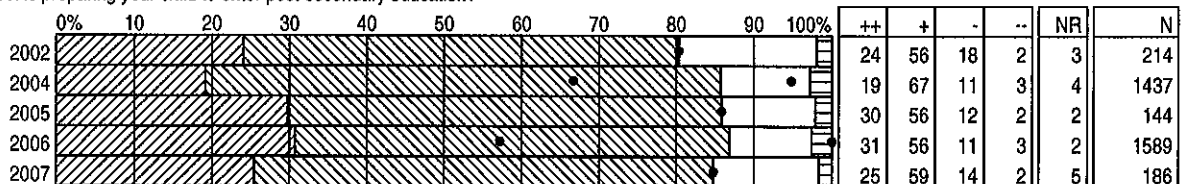
12) How satisfied are you with the physical condition of your child's school?



13) How satisfied are you with your opportunity for involvement in school decisions that affect your child?



14) How satisfied are you that school is preparing your child to enter post-secondary education?



* 2004 results do not include Grades 4, 7, 10

* Results weighted

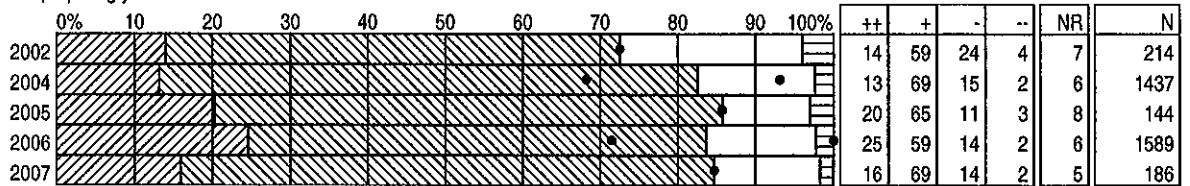
DISTRICT SATISFACTION SURVEY RESULTS 2002-2007

K-12 DISTRICT PARENTS

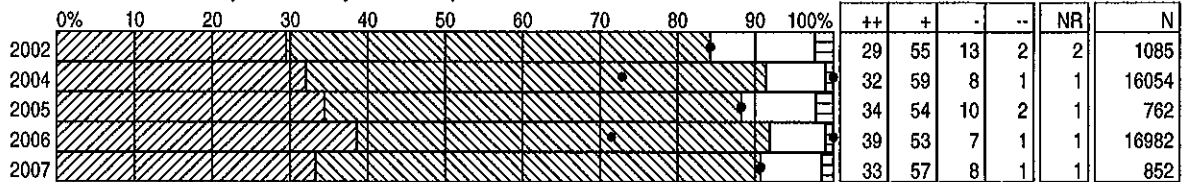
BY QUESTION

PARENTS
DISTRICT TOTAL

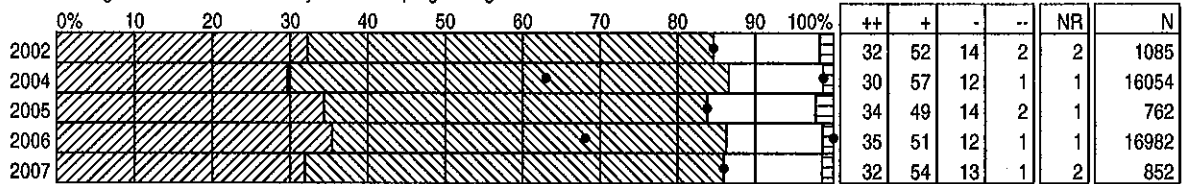
15) How satisfied are you that school is preparing your child to enter the world of work?



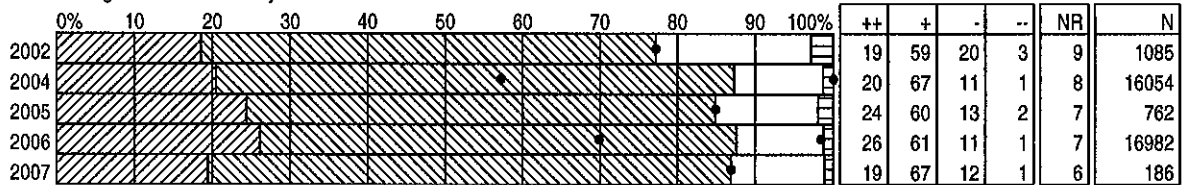
16) How satisfied are you with the usefulness of the information you receive in your child's report card?



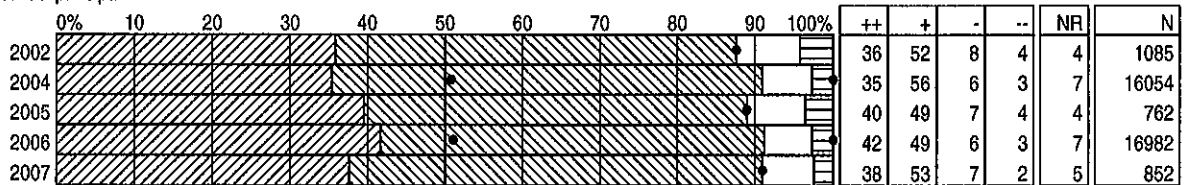
17) How satisfied are you that you receive enough information about how your child is progressing?



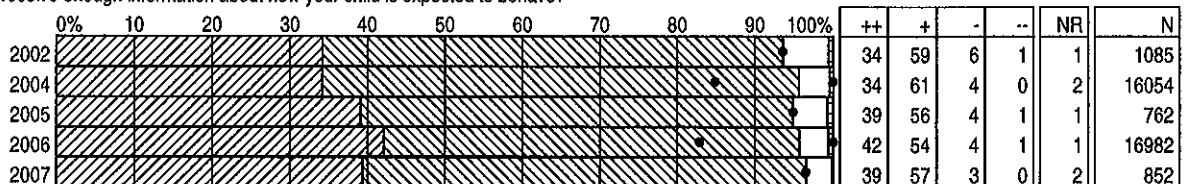
18) How satisfied are you that you receive enough information about your school's student achievement results?



19) How satisfied are you with the school principal?



20) How satisfied are you that you receive enough information about how your child is expected to behave?



* 2004 results do not include Grades 4, 7, 10

* Results weighted

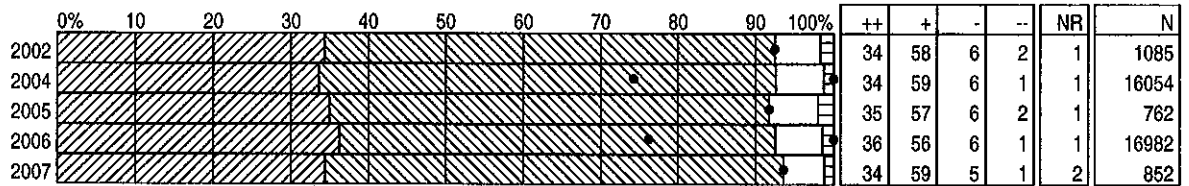
DISTRICT SATISFACTION SURVEY RESULTS 2002-2007

K-12 DISTRICT PARENTS

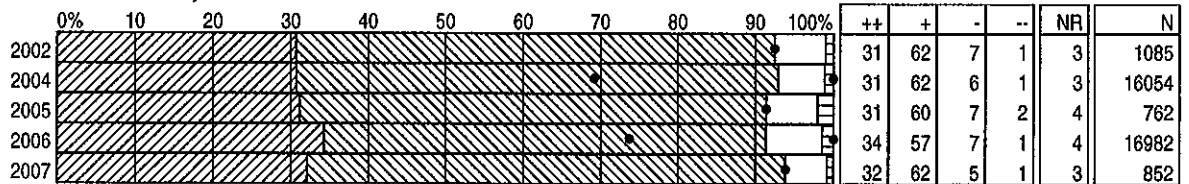
BY QUESTION

PARENTS
DISTRICT TOTAL

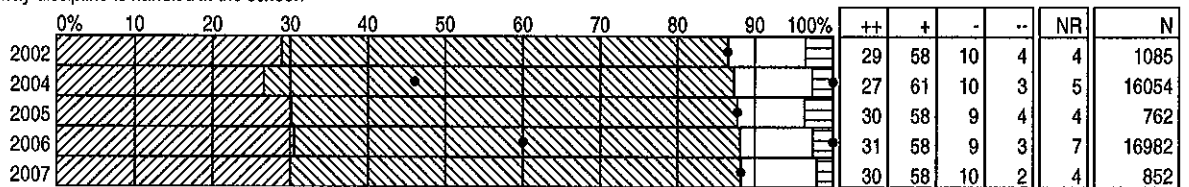
21a) How satisfied are you that your child is safe in the school?



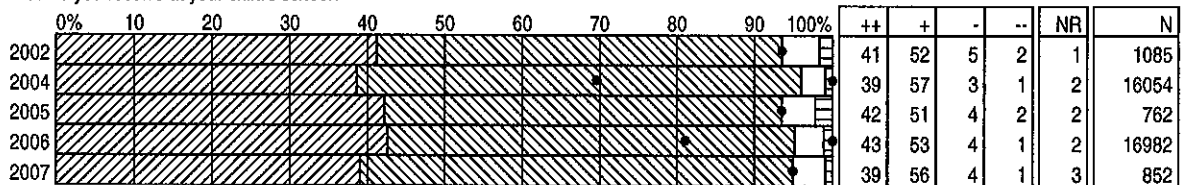
21b) How satisfied are you that your child is safe on the way to and from school?



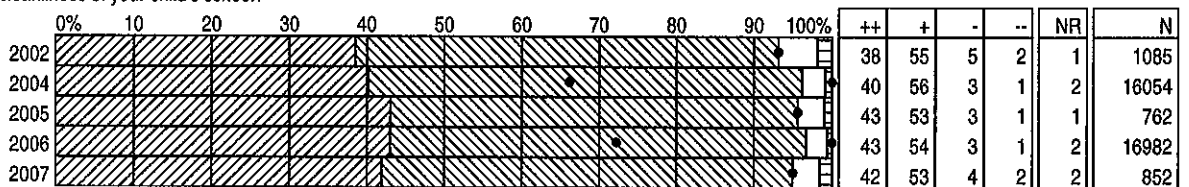
22) How satisfied are you with the way discipline is handled in the school?



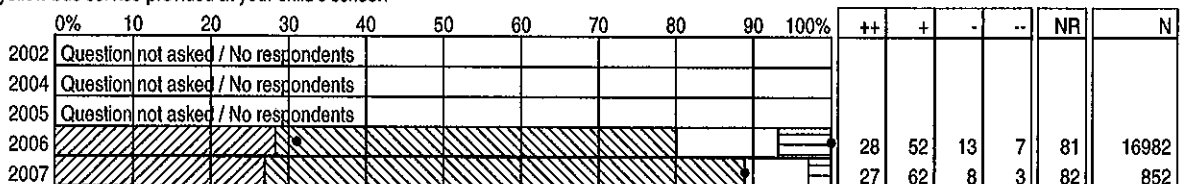
23) How satisfied are you with the welcome you receive at your child's school?



24) How satisfied are you with the cleanliness of your child's school?



25) How satisfied are you with the yellow bus service provided at your child's school?



* 2004 results do not include Grades 4, 7, 10

* Results weighted

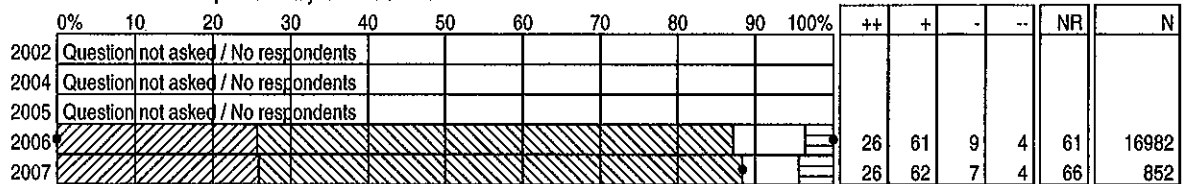
DISTRICT SATISFACTION SURVEY RESULTS 2002-2007

K-12 DISTRICT PARENTS

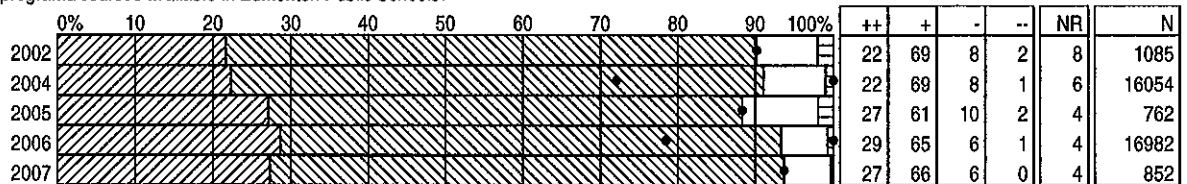
BY QUESTION

PARENTS
DISTRICT TOTAL

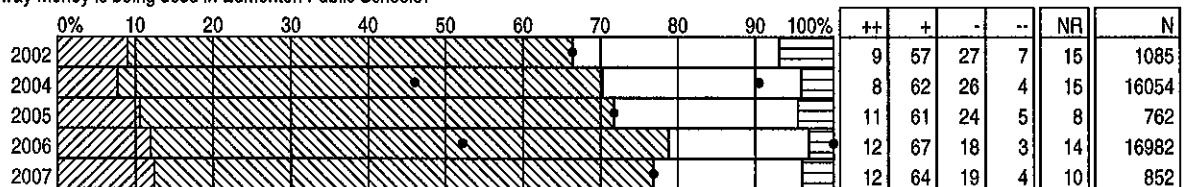
26) How satisfied are you with the Edmonton Transit service provided at your child's school?



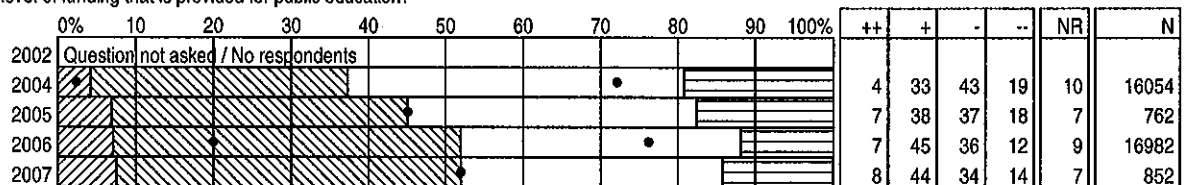
27) How satisfied are you with the programs/courses available in Edmonton Public Schools?



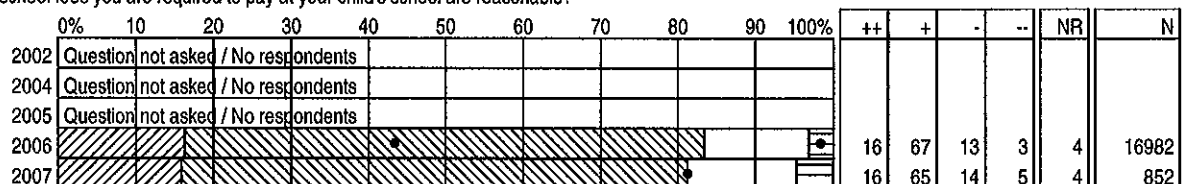
28) How satisfied are you with the way money is being used in Edmonton Public Schools?



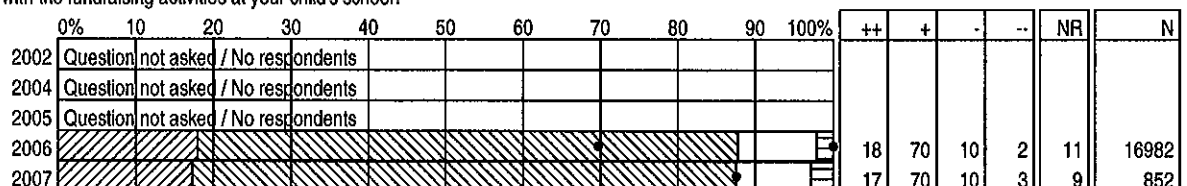
29) How satisfied are you with the level of funding that is provided for public education?



30) How satisfied are you that the school fees you are required to pay at your child's school are reasonable?



31) How satisfied are you, overall, with the fundraising activities at your child's school?



* 2004 results do not include Grades 4, 7, 10

* Results weighted

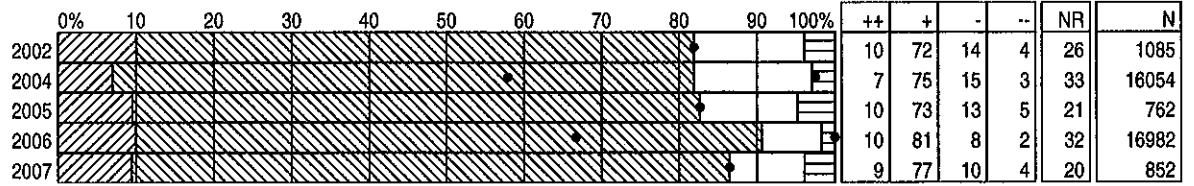
DISTRICT SATISFACTION SURVEY RESULTS 2002-2007

K-12 DISTRICT PARENTS

BY QUESTION

PARENTS
DISTRICT TOTAL

32) How satisfied are you with the board of trustees?



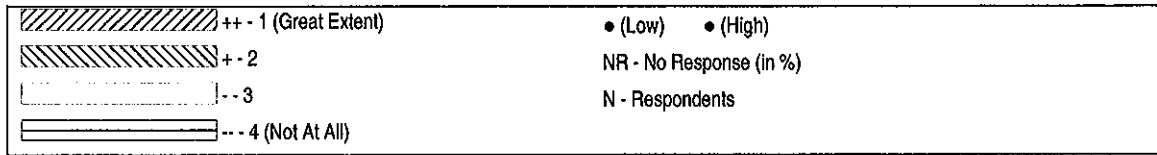
* 2004 results do not include Grades 4, 7, 10
* Results weighted

DISTRICT SATISFACTION SURVEY RESULTS 2002-2007

SCHOOL STAFF

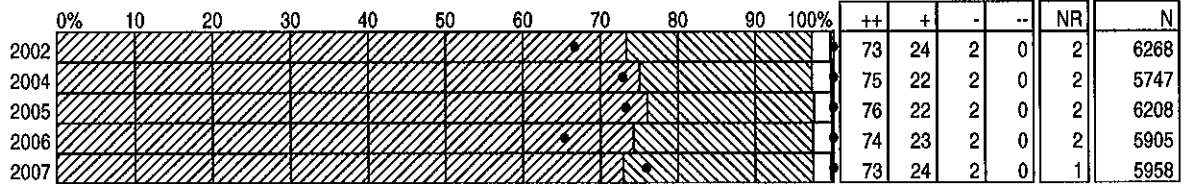
BY QUESTION

SCHOOL STAFF
DISTRICT TOTAL

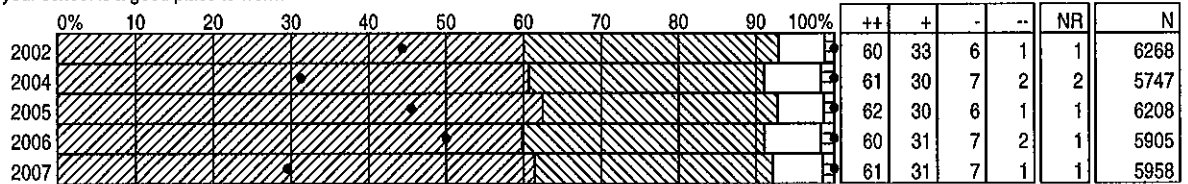


Note: Graph percentages are based on committed responses

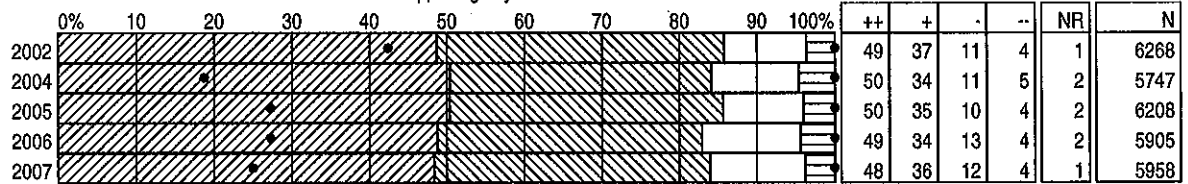
1) To what extent is your school focused on student achievement?



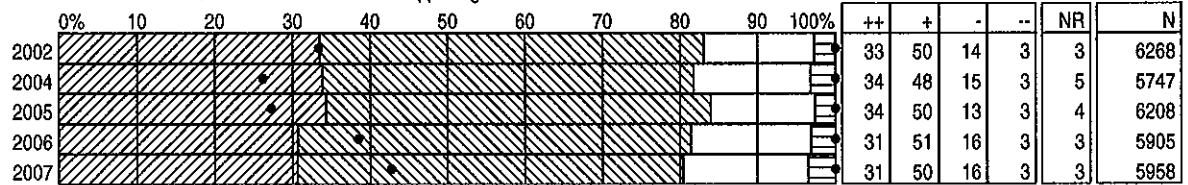
2) To what extent do you feel that your school is a good place to work?



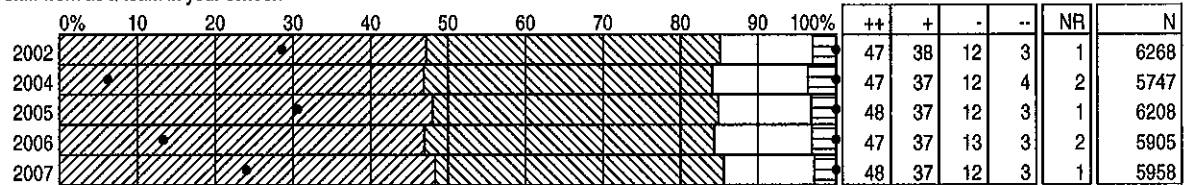
3a) To what extent are you satisfied with the information that is shared about what is happening at your school?



3b) To what extent are you satisfied with the information that is shared about what is happening in the district?



4) To what extent do you feel that staff work as a team in your school?



* Results weighted

* Note: Surveys not conducted in 2003

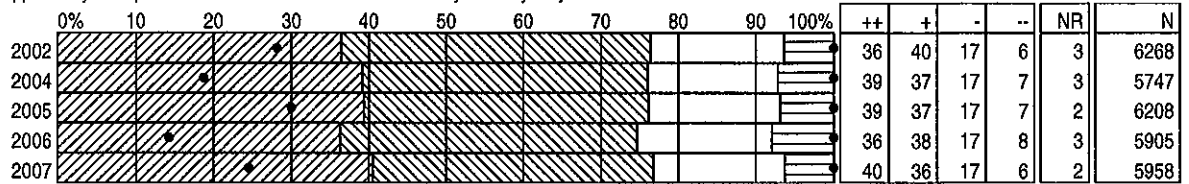
DISTRICT SATISFACTION SURVEY RESULTS 2002-2007

SCHOOL STAFF

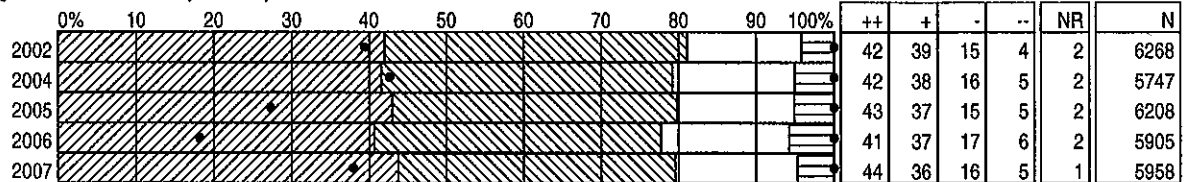
BY QUESTION

SCHOOL STAFF
DISTRICT TOTAL

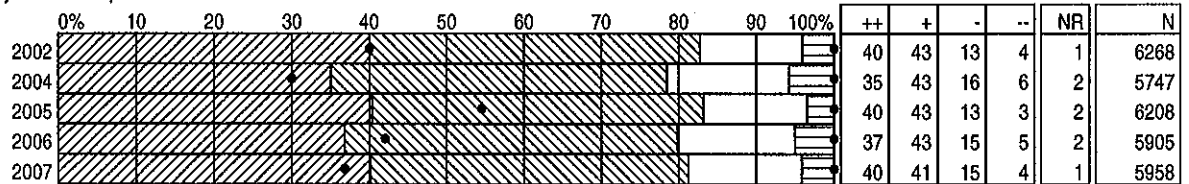
5) To what extent do you have an opportunity for input into school level decisions that affect you and your job?



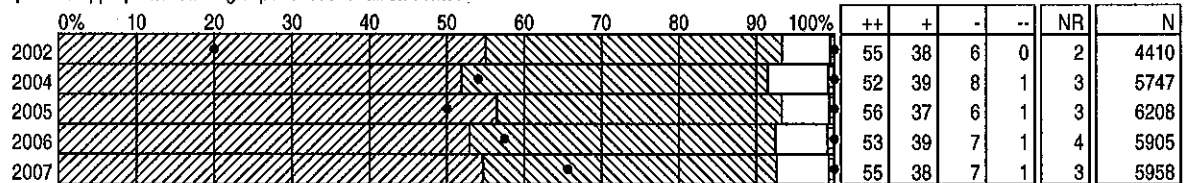
6) To what extent do you get recognition for the work that you do in your school?



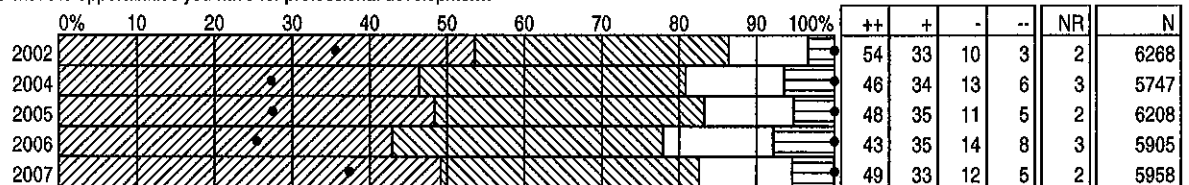
7) To what extent do you feel that your work responsibilities are reasonable?



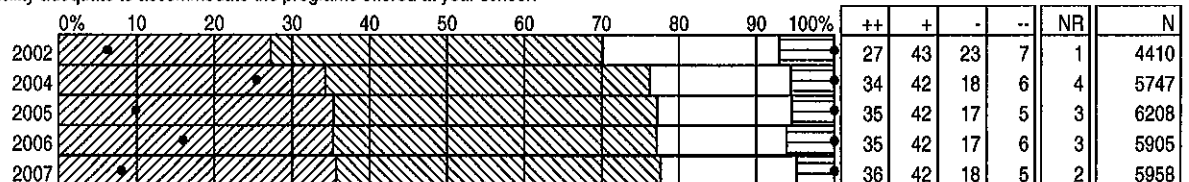
8) To what extent does your school provide appropriate learning experiences for all students?



9) To what extent are you satisfied with the opportunities you have for professional development?



10) To what extent is the school facility adequate to accommodate the programs offered at your school?



* Results weighted

* Note: Surveys not conducted in 2003

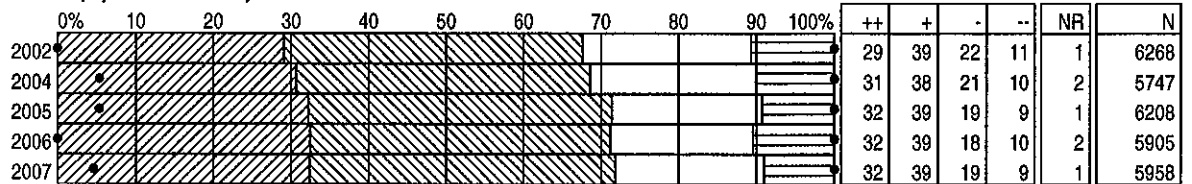
DISTRICT SATISFACTION SURVEY RESULTS 2002-2007

SCHOOL STAFF

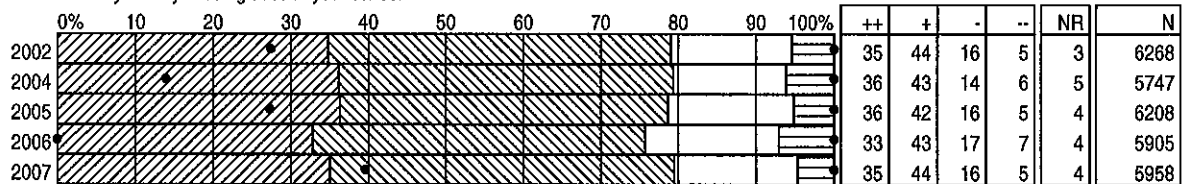
BY QUESTION

SCHOOL STAFF
DISTRICT TOTAL

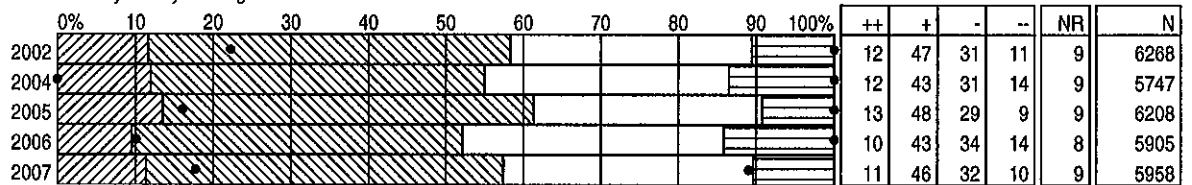
11) To what extent are you satisfied with the physical condition of your school?



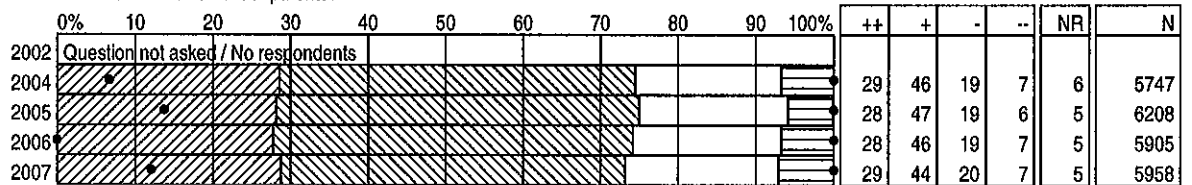
12a) To what extent are you satisfied with the way money is being used in your school?



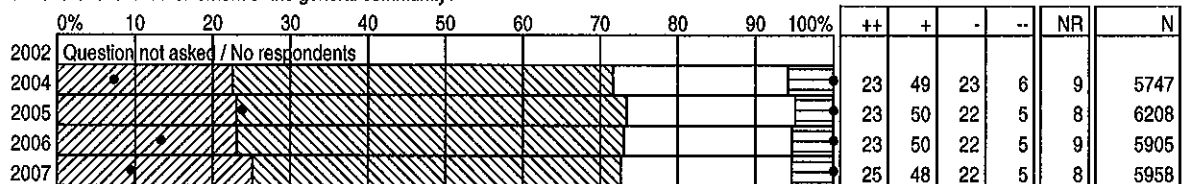
12b) To what extent are you satisfied with the way money is being used in the district?



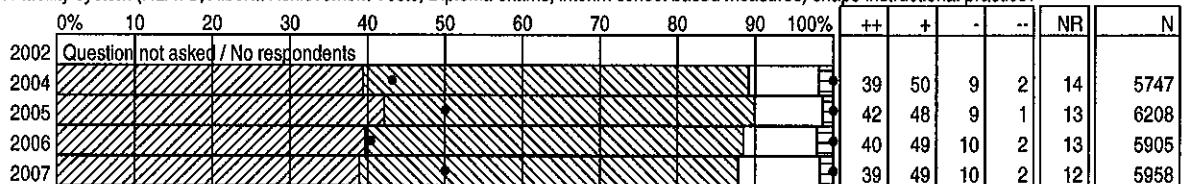
13a) To what extent are you satisfied with the level of involvement of parents?



13b) To what extent are you satisfied with the level of involvement of the general community?



14) To what extent does your accountability system (HLATS, Alberta Achievement Tests, Diploma exams, interim school based measures) shape instructional practice?



* Results weighted

* Note: Surveys not conducted in 2003

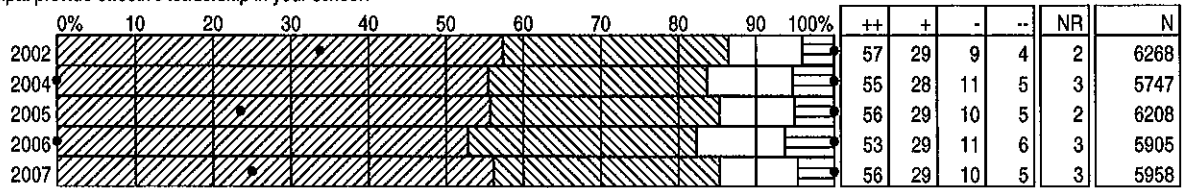
DISTRICT SATISFACTION SURVEY RESULTS 2002-2007

SCHOOL STAFF

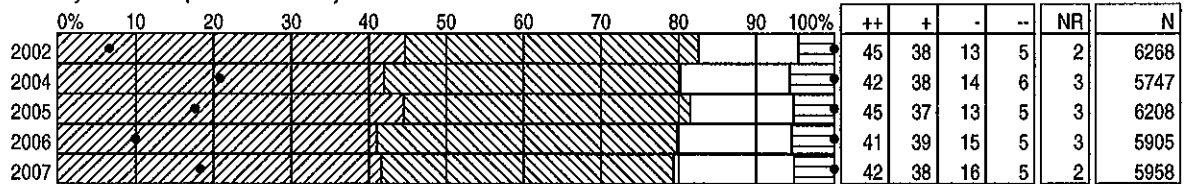
BY QUESTION

SCHOOL STAFF
DISTRICT TOTAL

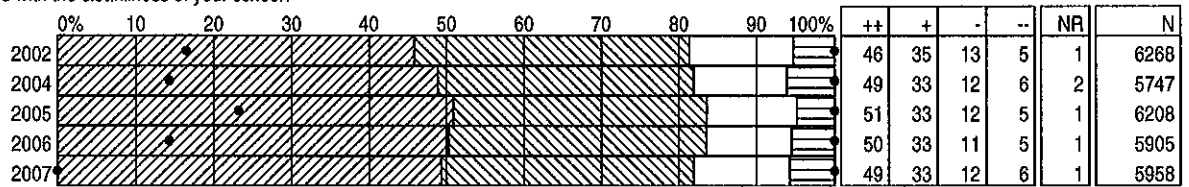
15) To what extent does your principal provide effective leadership in your school?



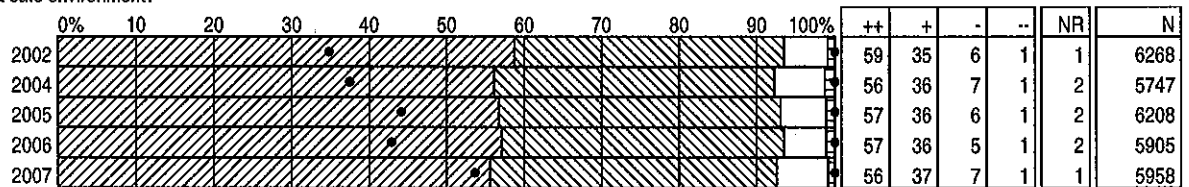
16) To what extent are you satisfied with way student discipline is handled at your school?



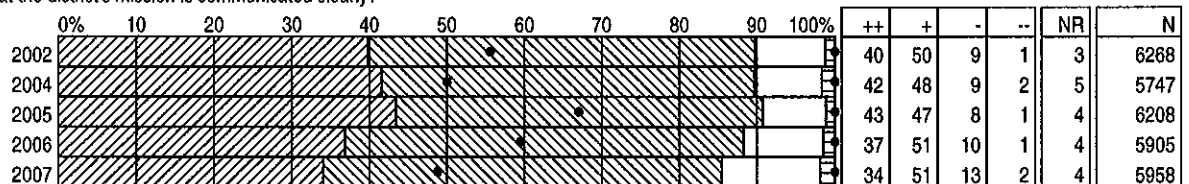
17) To what extent are you satisfied with the cleanliness of your school?



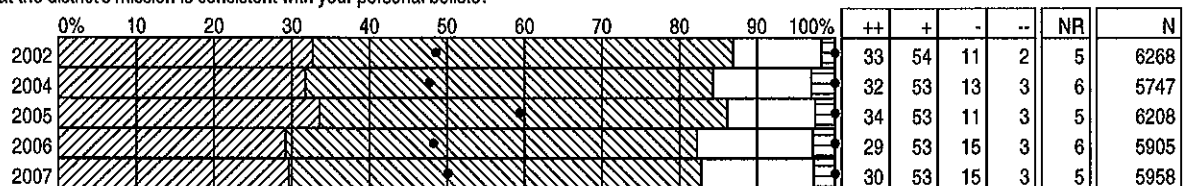
18) To what extent is your school a safe environment?



19a) To what extent do you feel that the district's mission is communicated clearly?



19b) To what extent do you feel that the district's mission is consistent with your personal beliefs?



* Results weighted

* Note: Surveys not conducted in 2003

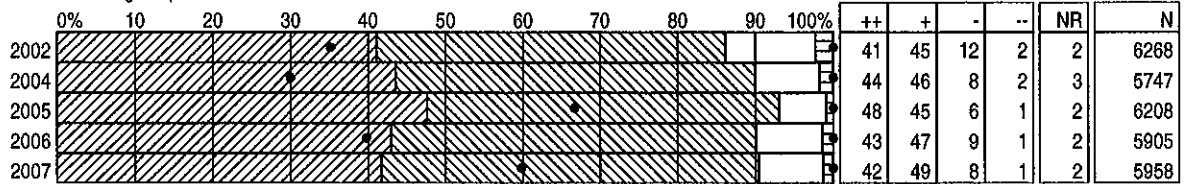
DISTRICT SATISFACTION SURVEY RESULTS 2002-2007

SCHOOL STAFF

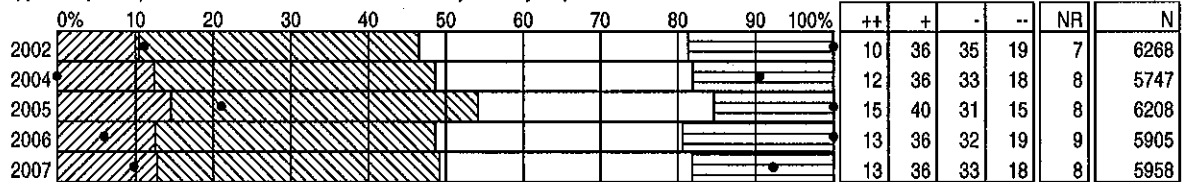
BY QUESTION

SCHOOL STAFF
DISTRICT TOTAL

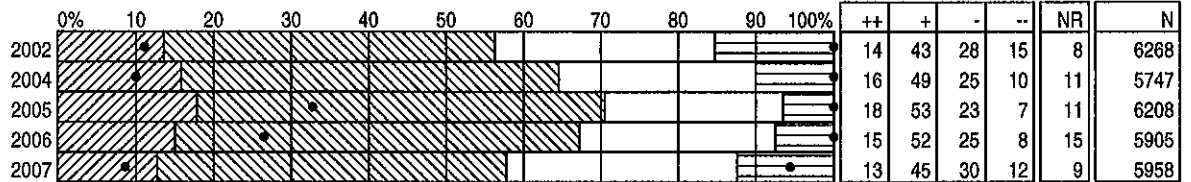
20) To what extent do you feel that the district is a good place to work?



21) To what extent do you have an opportunity for input into district level decisions that affect you and your job?



22) To what extent do you have confidence in the board of trustees?



* Results weighted

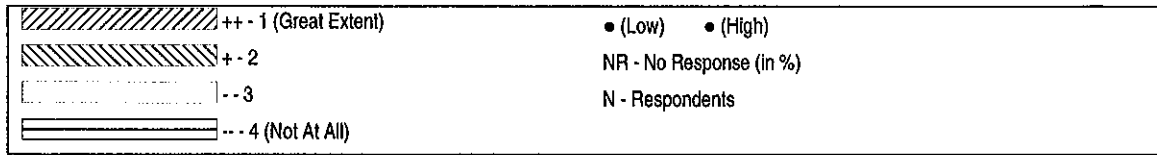
* Note: Surveys not conducted in 2003

DISTRICT SATISFACTION SURVEY RESULTS 2002-2007

PRINCIPALS

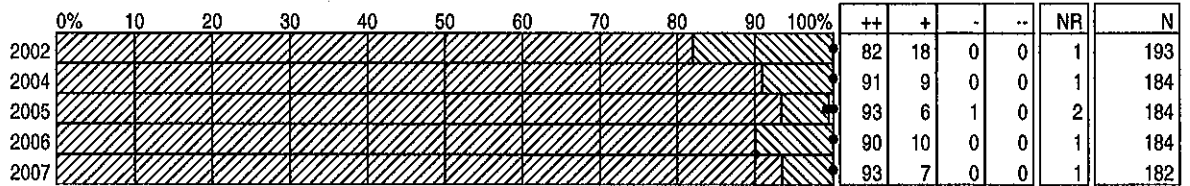
BY QUESTIONS

PRINCIPALS
DISTRICT TOTAL

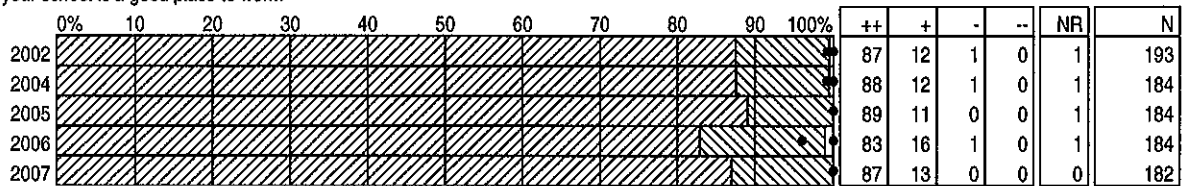


Note: Graph percentages are based on committed responses

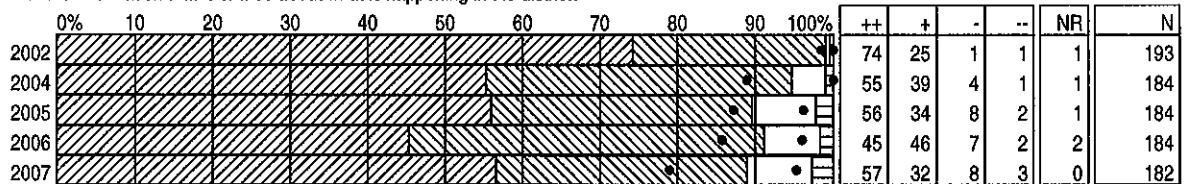
1) To what extent is your school focused on student achievement?



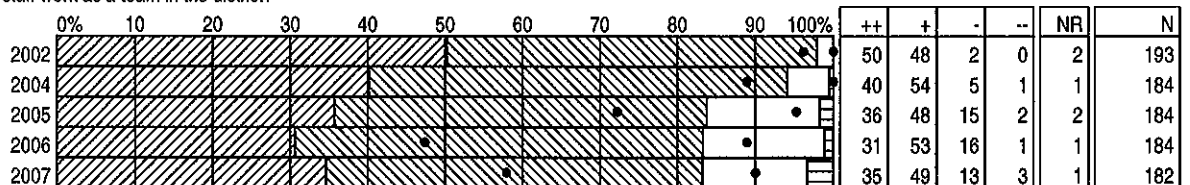
2) To what extent do you feel that your school is a good place to work?



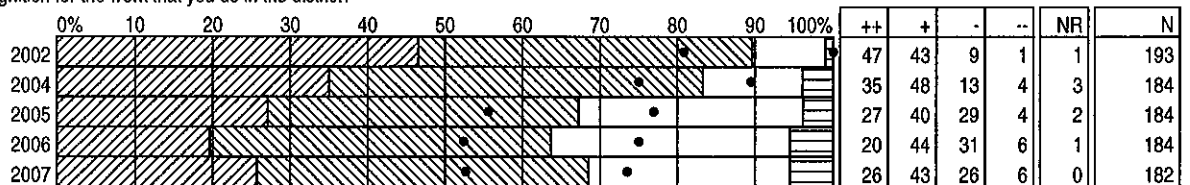
3) To what extent are you satisfied with the information that is shared about what is happening in the district?



4) To what extent do you feel that staff work as a team in the district?



5) To what extent do you get recognition for the work that you do in the district?



* Results weighted

* Note: Surveys not administered in 2003

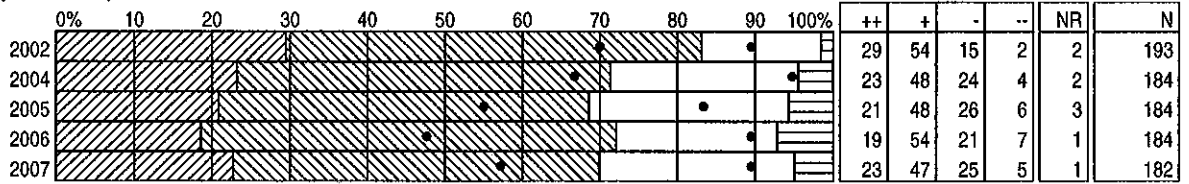
DISTRICT SATISFACTION SURVEY RESULTS 2002-2007

PRINCIPALS

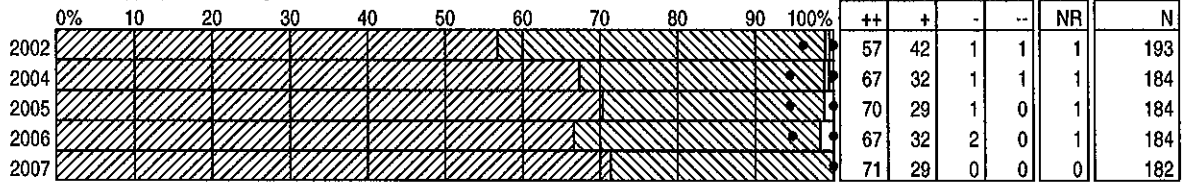
BY QUESTIONS

PRINCIPALS
DISTRICT TOTAL

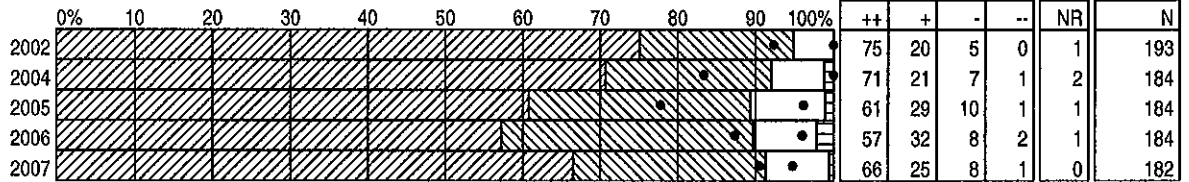
6) To what extent do you feel that your work responsibilities are reasonable?



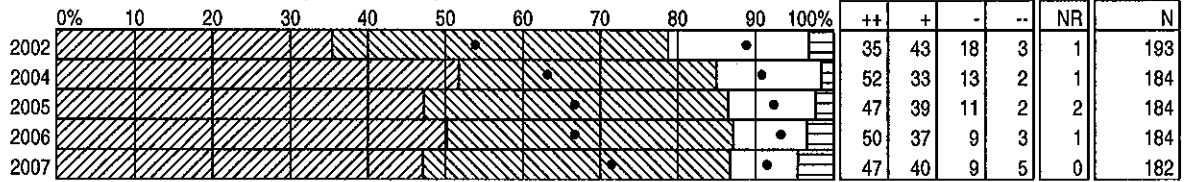
7) To what extent do staff in your school provide appropriate learning experiences for all students?



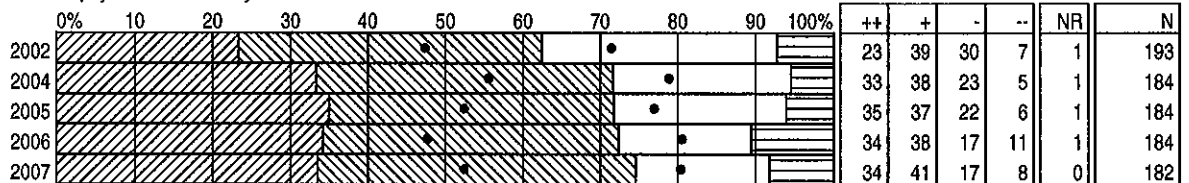
8) To what extent are you satisfied with the opportunities you have for professional development?



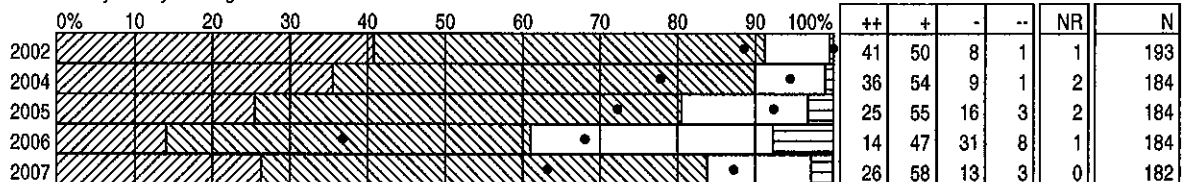
9) To what extent is the school facility adequate to accommodate the programs offered at your school?



10) To what extent are you satisfied with the physical condition of your school?



11) To what extent are you satisfied with the way money is being used in the district?



* Results weighted

* Note: Surveys not administered in 2003

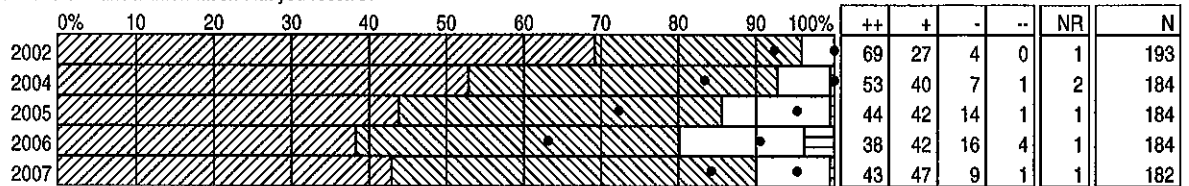
DISTRICT SATISFACTION SURVEY RESULTS 2002-2007

PRINCIPALS

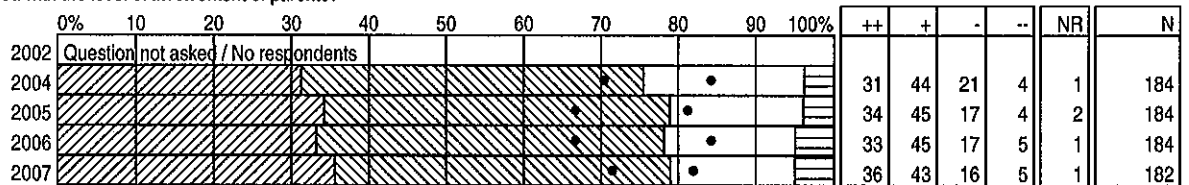
BY QUESTIONS

PRINCIPALS
DISTRICT TOTAL

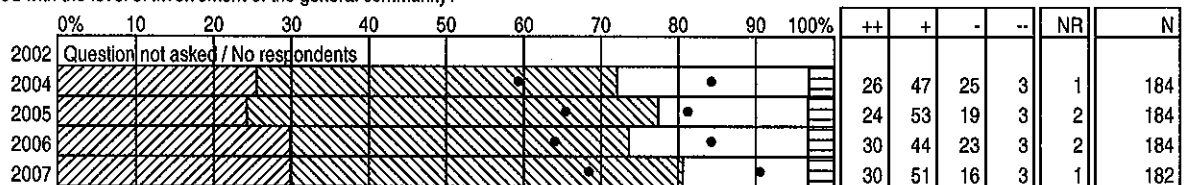
12) To what extent are you satisfied with the financial information that you receive?



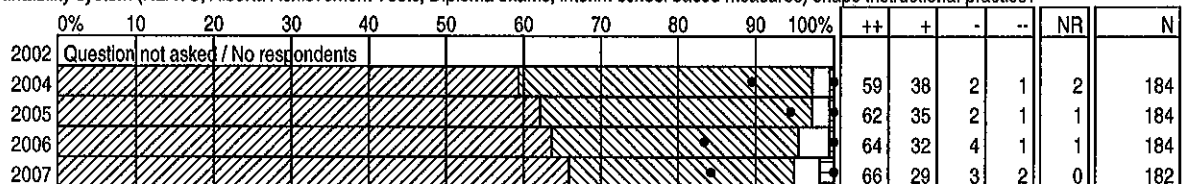
13a) To what extent are you satisfied with the level of involvement of parents?



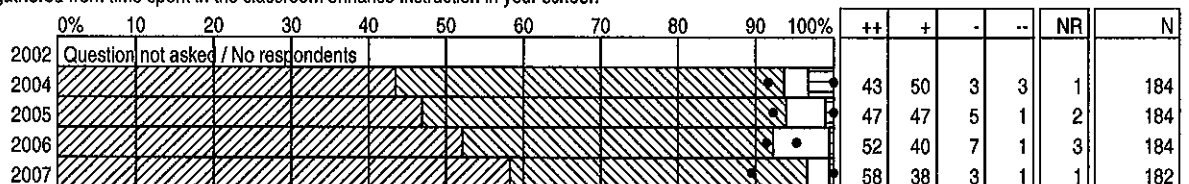
13b) To what extent are you satisfied with the level of involvement of the general community?



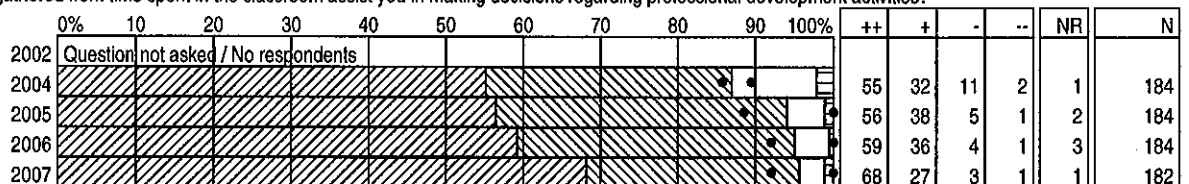
14) To what extent does your accountability system (HLATS, Alberta Achievement Tests, Diploma exams, interim school based measures) shape instructional practice?



15) To what extent does the data gathered from time spent in the classroom enhance instruction in your school?



16) To what extent does the data gathered from time spent in the classroom assist you in making decisions regarding professional development activities?



* Results weighted

* Note: Surveys not administered in 2003

DISTRICT SATISFACTION SURVEY RESULTS 2002-2007

PRINCIPALS

BY QUESTIONS

PRINCIPALS
DISTRICT TOTAL

17) To what extent the data gathered from time spent in the classroom assist you in making decisions regarding the allocation of resources?

| | 0% | 10 | 20 | 30 | 40 | 50 | 60 | 70 | 80 | 90 | 100% | ++ | + | - | -- | NR | N | |
|------|-------------------------------------|----|----|----|----|----|----|----|----|----|------|----|----|----|----|----|---|-----|
| 2002 | Question not asked / No respondents | | | | | | | | | | | | | | | | | |
| 2004 | | | | | | | | | | | | 49 | 38 | 10 | 3 | 1 | | 184 |
| 2005 | | | | | | | | | | | | 50 | 44 | 4 | 1 | 3 | | 184 |
| 2006 | | | | | | | | | | | | 55 | 37 | 7 | 1 | 3 | | 184 |
| 2007 | | | | | | | | | | | | 68 | 27 | 4 | 1 | 1 | | 182 |

18) To what extent are you satisfied with the cleanliness of your school?

| | 0% | 10 | 20 | 30 | 40 | 50 | 60 | 70 | 80 | 90 | 100% | ++ | + | - | -- | NR | N | |
|------|----|----|----|----|----|----|----|----|----|----|------|----|----|----|----|----|---|-----|
| 2002 | | | | | | | | | | | | 55 | 33 | 9 | 3 | 1 | | 193 |
| 2004 | | | | | | | | | | | | 53 | 34 | 11 | 2 | 1 | | 184 |
| 2005 | | | | | | | | | | | | 57 | 32 | 9 | 2 | 1 | | 184 |
| 2006 | | | | | | | | | | | | 55 | 36 | 8 | 2 | 1 | | 184 |
| 2007 | | | | | | | | | | | | 52 | 35 | 12 | 1 | 0 | | 182 |

19) To what extent is your school a safe environment?

| | 0% | 10 | 20 | 30 | 40 | 50 | 60 | 70 | 80 | 90 | 100% | ++ | + | - | -- | NR | N | |
|------|----|----|----|----|----|----|----|----|----|----|------|----|----|---|----|----|---|-----|
| 2002 | | | | | | | | | | | | 82 | 18 | 0 | 0 | 1 | | 193 |
| 2004 | | | | | | | | | | | | 78 | 22 | 0 | 1 | 2 | | 184 |
| 2005 | | | | | | | | | | | | 83 | 16 | 1 | 0 | 1 | | 184 |
| 2006 | | | | | | | | | | | | 77 | 22 | 1 | 0 | 1 | | 184 |
| 2007 | | | | | | | | | | | | 80 | 20 | 1 | 0 | 0 | | 182 |

20a) To what extent do you feel that the district's mission is communicated clearly?

| | 0% | 10 | 20 | 30 | 40 | 50 | 60 | 70 | 80 | 90 | 100% | ++ | + | - | -- | NR | N | |
|------|----|----|----|----|----|----|----|----|----|----|------|----|----|---|----|----|---|-----|
| 2002 | | | | | | | | | | | | 81 | 17 | 2 | 0 | 1 | | 193 |
| 2004 | | | | | | | | | | | | 71 | 26 | 3 | 1 | 1 | | 184 |
| 2005 | | | | | | | | | | | | 69 | 26 | 3 | 1 | 1 | | 184 |
| 2006 | | | | | | | | | | | | 55 | 37 | 7 | 1 | 1 | | 184 |
| 2007 | | | | | | | | | | | | 59 | 34 | 5 | 2 | 1 | | 182 |

20b) To what extent do you feel that the district's mission is consistent with your personal beliefs?

| | 0% | 10 | 20 | 30 | 40 | 50 | 60 | 70 | 80 | 90 | 100% | ++ | + | - | -- | NR | N | |
|------|----|----|----|----|----|----|----|----|----|----|------|----|----|---|----|----|---|-----|
| 2002 | | | | | | | | | | | | 76 | 22 | 2 | 0 | 1 | | 193 |
| 2004 | | | | | | | | | | | | 64 | 32 | 3 | 1 | 1 | | 184 |
| 2005 | | | | | | | | | | | | 63 | 31 | 4 | 2 | 2 | | 184 |
| 2006 | | | | | | | | | | | | 54 | 40 | 5 | 1 | 1 | | 184 |
| 2007 | | | | | | | | | | | | 65 | 29 | 3 | 3 | 1 | | 182 |

21) To what extent do you feel that the district is a good place to work?

| | 0% | 10 | 20 | 30 | 40 | 50 | 60 | 70 | 80 | 90 | 100% | ++ | + | - | -- | NR | N | |
|------|----|----|----|----|----|----|----|----|----|----|------|----|----|---|----|----|---|-----|
| 2002 | | | | | | | | | | | | 79 | 20 | 2 | 0 | 1 | | 193 |
| 2004 | | | | | | | | | | | | 73 | 25 | 2 | 1 | 1 | | 184 |
| 2005 | | | | | | | | | | | | 61 | 34 | 4 | 1 | 1 | | 184 |
| 2006 | | | | | | | | | | | | 56 | 38 | 6 | 1 | 1 | | 184 |
| 2007 | | | | | | | | | | | | 65 | 29 | 5 | 1 | 2 | | 182 |

* Results weighted

* Note: Surveys not administered in 2003

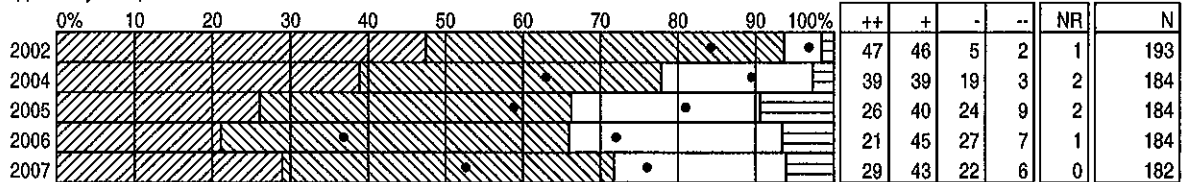
DISTRICT SATISFACTION SURVEY RESULTS 2002-2007

PRINCIPALS

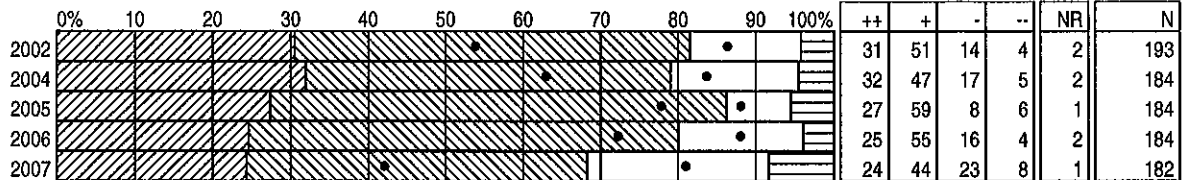
BY QUESTIONS

PRINCIPALS
DISTRICT TOTAL

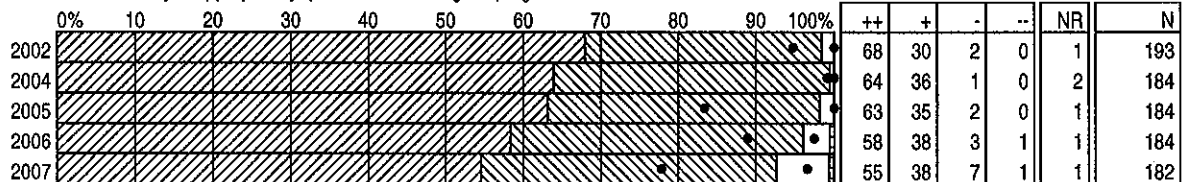
22) To what extent do you have an opportunity for input into district level decisions?



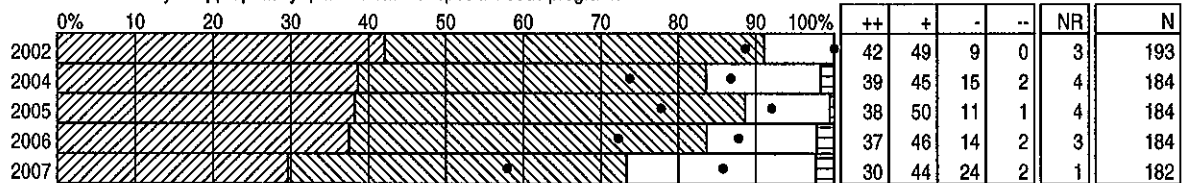
23) To what extent do you have confidence in the board of trustees?



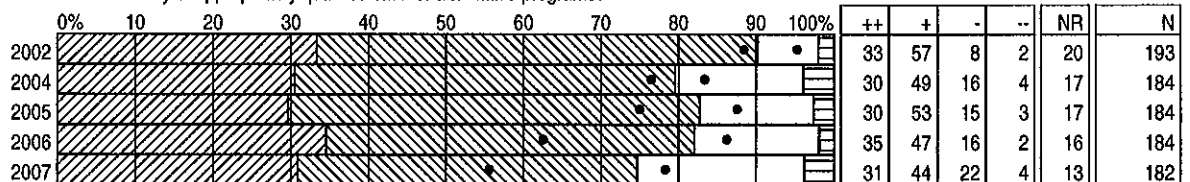
24a) To what extent are you satisfied with the availability of appropriately qualified staff for regular programs?



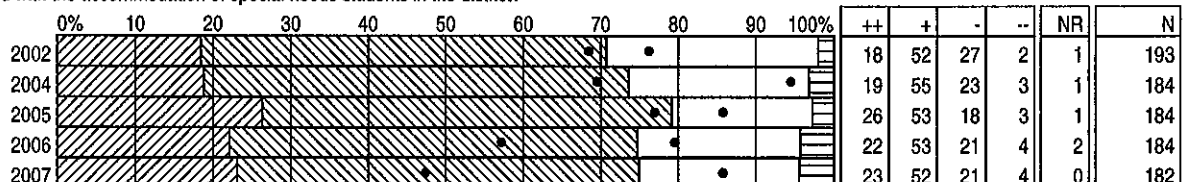
24b) To what extent are you satisfied with the availability of appropriately qualified staff for special needs programs?



24c) To what extent are you satisfied with the availability of appropriately qualified staff for alternative programs?



25) To what extent are you satisfied with the accommodation of special needs students in the district?



* Results weighted

* Note: Surveys not administered in 2003

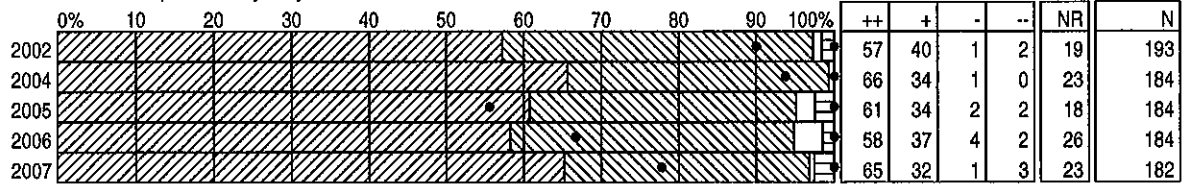
DISTRICT SATISFACTION SURVEY RESULTS 2002-2007

PRINCIPALS

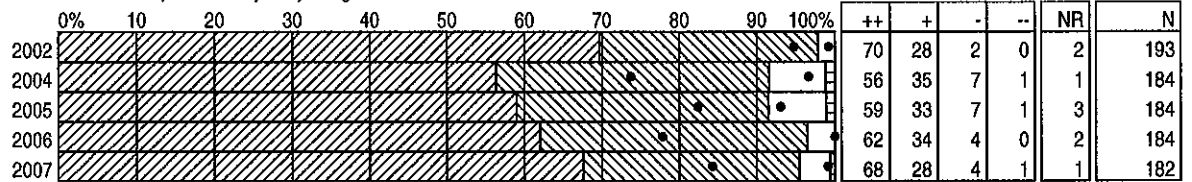
BY QUESTIONS

PRINCIPALS
DISTRICT TOTAL

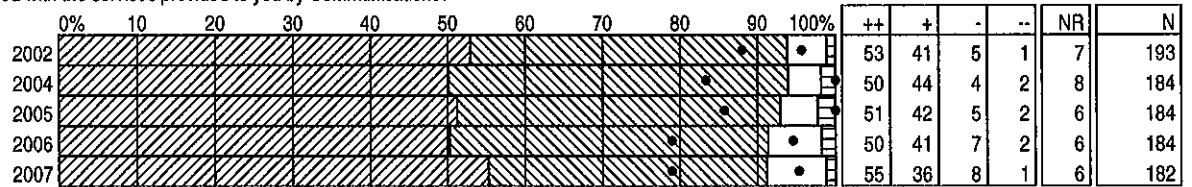
26a) To what extent are you satisfied with the services provided to you by Bennett Centre?



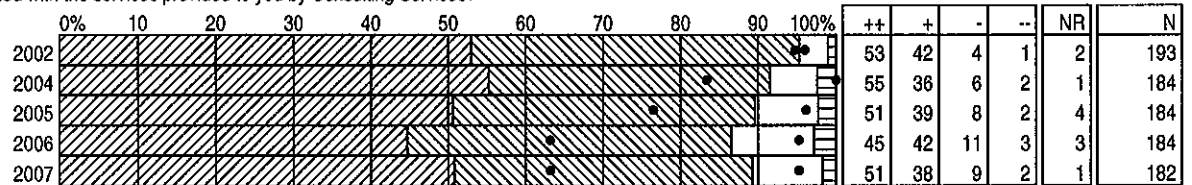
26b) To what extent are you satisfied with the services provided to you by Budget Services?



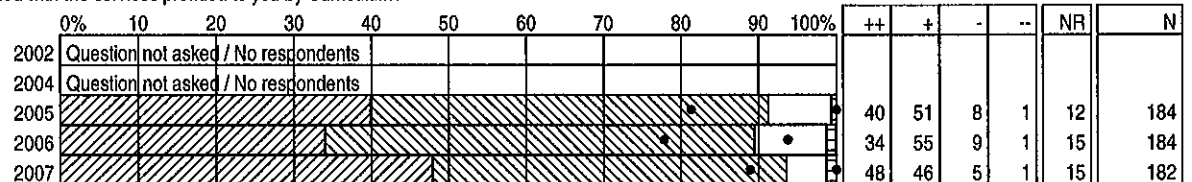
26c) To what extent are you satisfied with the services provided to you by Communications?



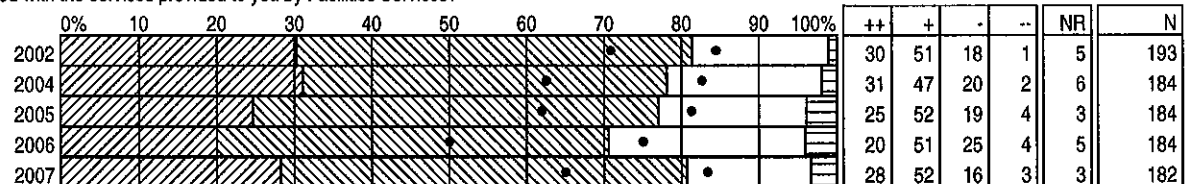
26d) To what extent are you satisfied with the services provided to you by Consulting Services?



26e) To what extent are you satisfied with the services provided to you by Curriculum?



26f) To what extent are you satisfied with the services provided to you by Facilities Services?



* Results weighted

* Note: Surveys not administered in 2003

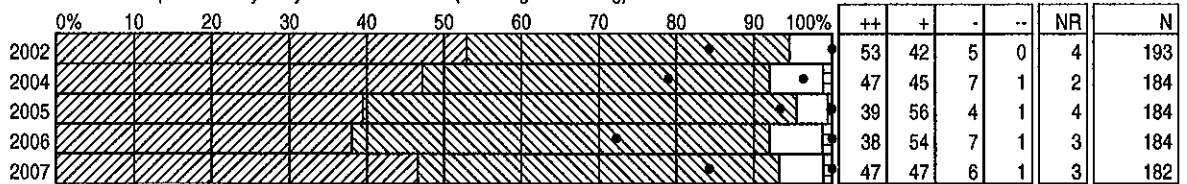
DISTRICT SATISFACTION SURVEY RESULTS 2002-2007

PRINCIPALS

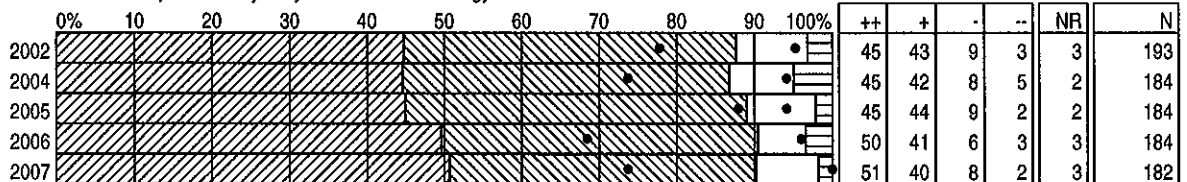
BY QUESTIONS

PRINCIPALS
DISTRICT TOTAL

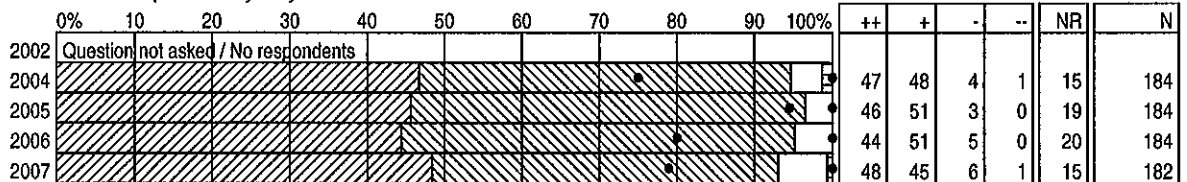
26g) To what extent are you satisfied with the services provided to you by Financial Services (including Purchasing)?



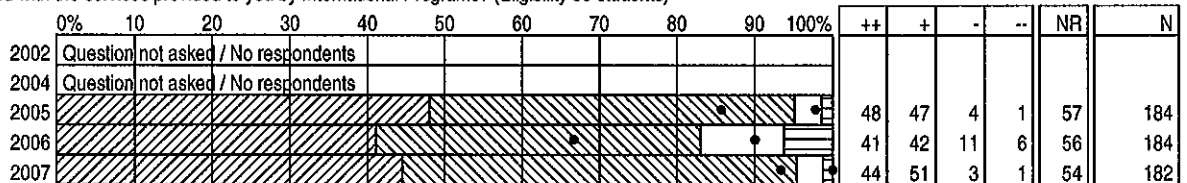
26h) To what extent are you satisfied with the services provided to you by Information Technology Services?



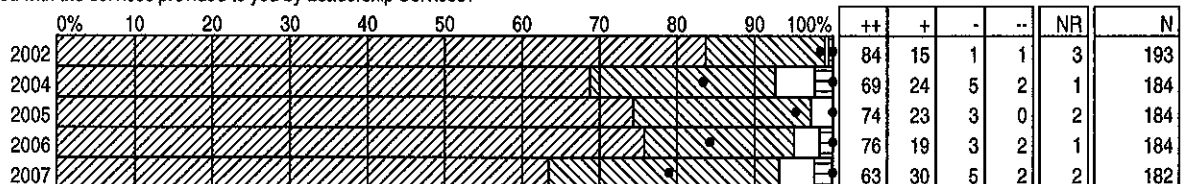
26i) To what extent are you satisfied with the services provided to you by Internal Audit?



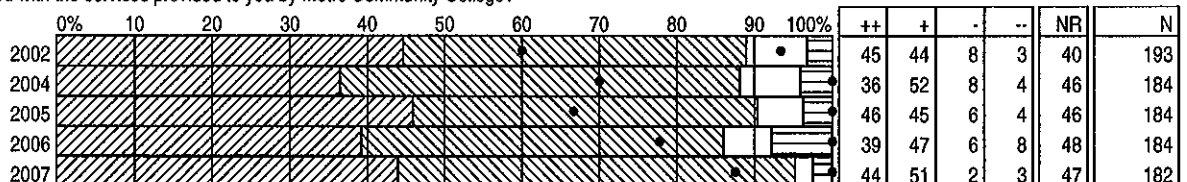
26j) To what extent are you satisfied with the services provided to you by International Programs? (Eligibility 55 students)



26k) To what extent are you satisfied with the services provided to you by Leadership Services?



26l) To what extent are you satisfied with the services provided to you by Metro Community College?



* Results weighted

* Note: Surveys not administered in 2003

DISTRICT SATISFACTION SURVEY RESULTS 2002-2007

PRINCIPALS

BY QUESTIONS

PRINCIPALS
DISTRICT TOTAL

26m) To what extent are you satisfied with the services provided to you by Personnel Recruitment & Staffing Services?

| | 0% | 10 | 20 | 30 | 40 | 50 | 60 | 70 | 80 | 90 | 100% | ++ | + | - | -- | NR | N | |
|------|-------------------------------------|----|----|----|----|----|----|----|----|----|------|----|----|----|----|----|-----|--|
| 2002 | Question not asked / No respondents | | | | | | | | | | | | | | | | | |
| 2004 | | | | | | | | | | | | 60 | 31 | 8 | 1 | 2 | 184 | |
| 2005 | | | | | | | | | | | | 58 | 34 | 5 | 3 | 3 | 184 | |
| 2006 | | | | | | | | | | | | 56 | 37 | 6 | 1 | 4 | 184 | |
| 2007 | | | | | | | | | | | | 55 | 35 | 10 | 1 | 1 | 182 | |

26n) To what extent are you satisfied with the services provided to you by Personnel Support Services?

| | 0% | 10 | 20 | 30 | 40 | 50 | 60 | 70 | 80 | 90 | 100% | ++ | + | - | -- | NR | N | |
|------|-------------------------------------|----|----|----|----|----|----|----|----|----|------|----|----|---|----|----|-----|--|
| 2002 | Question not asked / No respondents | | | | | | | | | | | | | | | | | |
| 2004 | | | | | | | | | | | | 59 | 38 | 2 | 1 | 3 | 184 | |
| 2005 | | | | | | | | | | | | 57 | 39 | 4 | 1 | 5 | 184 | |
| 2006 | | | | | | | | | | | | 56 | 37 | 6 | 1 | 6 | 184 | |
| 2007 | | | | | | | | | | | | 59 | 36 | 5 | 1 | 5 | 182 | |

26o) To what extent are you satisfied with the services provided to you by Planning?

| | 0% | 10 | 20 | 30 | 40 | 50 | 60 | 70 | 80 | 90 | 100% | ++ | + | - | -- | NR | N | |
|------|-------------------------------------|----|----|----|----|----|----|----|----|----|------|----|----|----|----|----|-----|--|
| 2002 | Question not asked / No respondents | | | | | | | | | | | | | | | | | |
| 2004 | | | | | | | | | | | | 33 | 49 | 16 | 2 | 10 | 184 | |
| 2005 | | | | | | | | | | | | 32 | 48 | 14 | 6 | 14 | 184 | |
| 2006 | | | | | | | | | | | | 34 | 38 | 24 | 4 | 8 | 184 | |
| 2007 | | | | | | | | | | | | 37 | 42 | 17 | 4 | 10 | 182 | |

26p) To what extent are you satisfied with the services provided to you by Resource Development Services?

| | 0% | 10 | 20 | 30 | 40 | 50 | 60 | 70 | 80 | 90 | 100% | ++ | + | - | -- | NR | N |
|------|----|----|----|----|----|----|----|----|----|----|------|----|----|----|----|----|-----|
| 2002 | | | | | | | | | | | | 42 | 49 | 7 | 2 | 18 | 193 |
| 2004 | | | | | | | | | | | | 31 | 54 | 13 | 1 | 25 | 184 |
| 2005 | | | | | | | | | | | | 40 | 51 | 5 | 4 | 27 | 184 |
| 2006 | | | | | | | | | | | | 30 | 55 | 13 | 2 | 33 | 184 |
| 2007 | | | | | | | | | | | | 42 | 50 | 8 | 0 | 29 | 182 |

26q) To what extent are you satisfied with the services provided to you by Student Achievement Services?

| | 0% | 10 | 20 | 30 | 40 | 50 | 60 | 70 | 80 | 90 | 100% | ++ | + | - | -- | NR | N | |
|------|-------------------------------------|----|----|----|----|----|----|----|----|----|------|----|----|----|----|----|-----|--|
| 2002 | Question not asked / No respondents | | | | | | | | | | | | | | | | | |
| 2004 | | | | | | | | | | | | 44 | 46 | 8 | 3 | 4 | 184 | |
| 2005 | | | | | | | | | | | | 29 | 41 | 19 | 11 | 3 | 184 | |
| 2006 | | | | | | | | | | | | 16 | 34 | 34 | 16 | 6 | 184 | |
| 2007 | | | | | | | | | | | | 30 | 41 | 17 | 11 | 5 | 182 | |

26r) To what extent are you satisfied with the services provided to you by Student Assessment?

| | 0% | 10 | 20 | 30 | 40 | 50 | 60 | 70 | 80 | 90 | 100% | ++ | + | - | -- | NR | N | |
|------|-------------------------------------|----|----|----|----|----|----|----|----|----|------|----|----|---|----|----|-----|--|
| 2002 | Question not asked / No respondents | | | | | | | | | | | | | | | | | |
| 2004 | | | | | | | | | | | | 52 | 41 | 6 | 2 | 2 | 184 | |
| 2005 | | | | | | | | | | | | 56 | 38 | 4 | 2 | 3 | 184 | |
| 2006 | | | | | | | | | | | | 50 | 41 | 8 | 1 | 5 | 184 | |
| 2007 | | | | | | | | | | | | 52 | 40 | 6 | 1 | 5 | 182 | |

* Results weighted

* Note: Surveys not administered in 2003

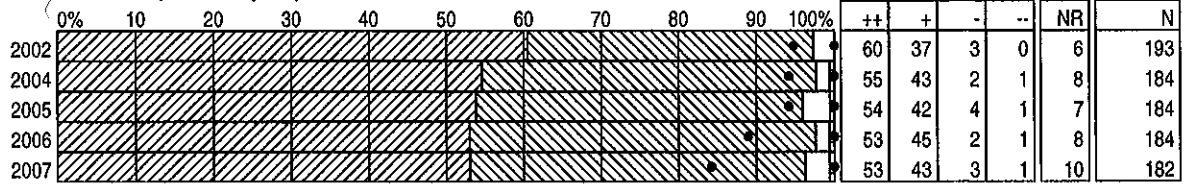
DISTRICT SATISFACTION SURVEY RESULTS 2002-2007

PRINCIPALS

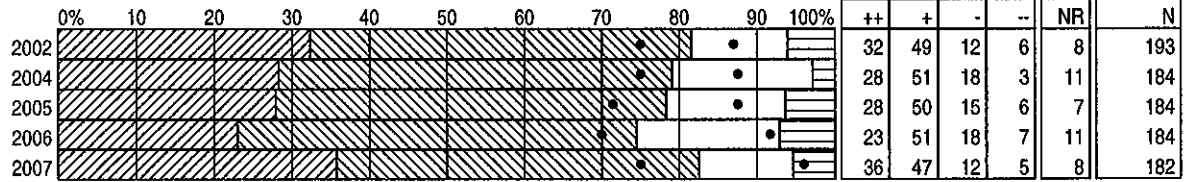
BY QUESTIONS

PRINCIPALS
DISTRICT TOTAL

26s) To what extent are you satisfied with the services provided to you by Student Information?



26t) To what extent are you satisfied with the services provided to you by Student Transportation??



* Results weighted

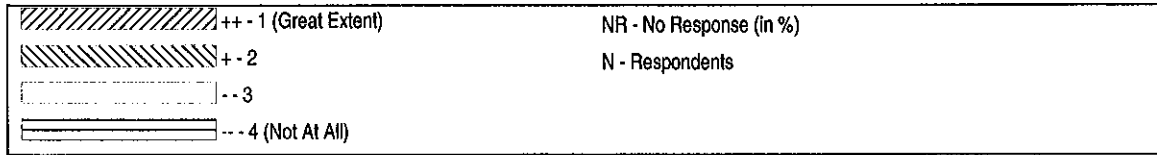
* Note: Surveys not administered in 2003

DISTRICT SATISFACTION SURVEY RESULTS 2002-2007

CENTRAL SERVICES

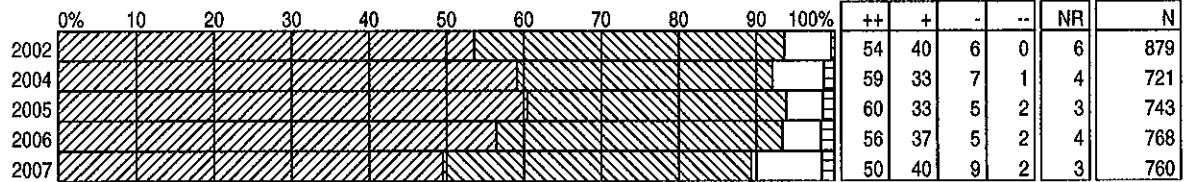
MULTI-YEAR BY QUESTION

CENTRAL SERVICES STAFF
TOTAL DISTRICT STAFF

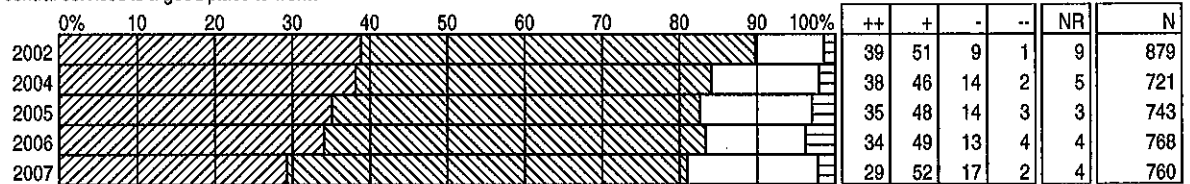


Note: Graph percentages are based on committed responses

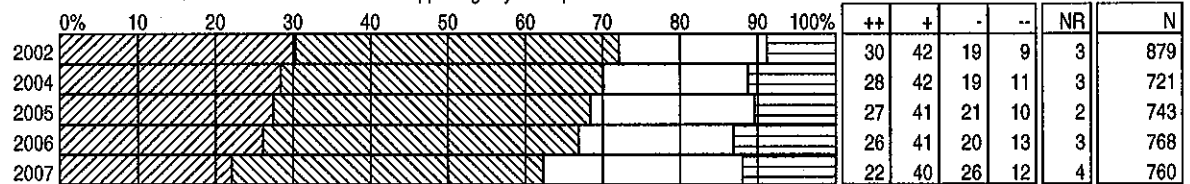
1) To what extent is the district focused on student achievement?



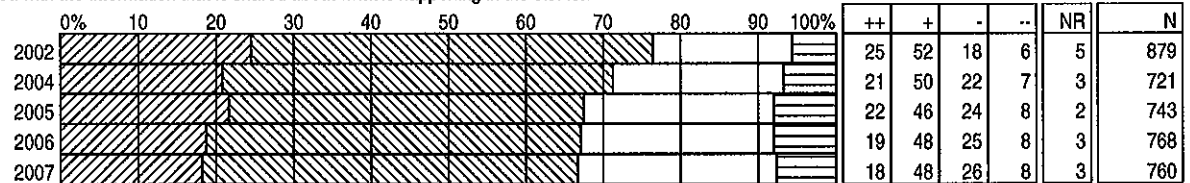
2) To what extent do you feel that central services is a good place to work?



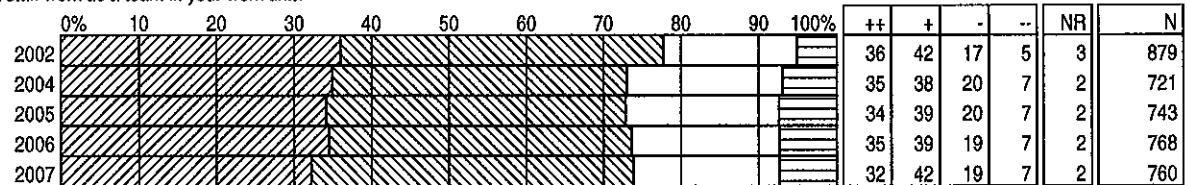
3a) To what extent are you satisfied with the information that is shared about what is happening in your department?



3b) To what extent are you satisfied with the information that is shared about what is happening in the district?



4) To what extent do you feel that staff work as a team in your work unit?



* Results weighted

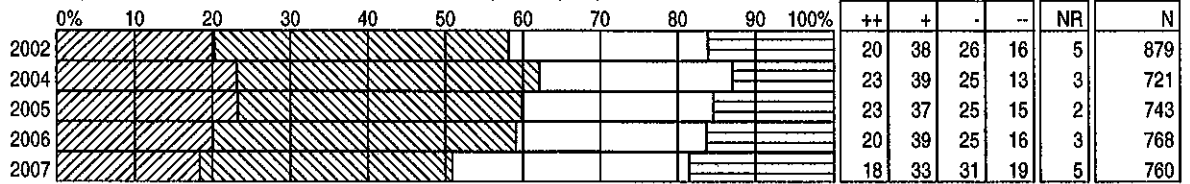
DISTRICT SATISFACTION SURVEY RESULTS 2002-2007

CENTRAL SERVICES

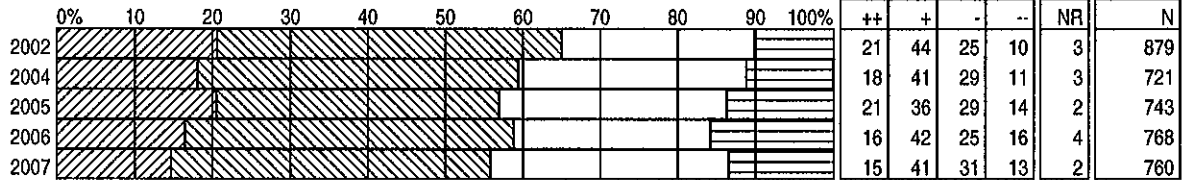
MULTI-YEAR BY QUESTION

CENTRAL SERVICES STAFF
TOTAL DISTRICT STAFF

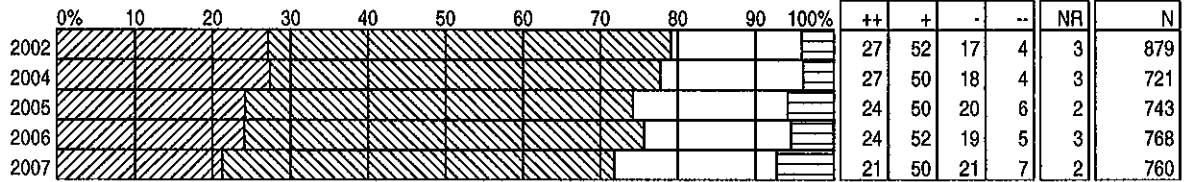
5) To what extent do you have an opportunity for input into department level decisions that affect you and your job?



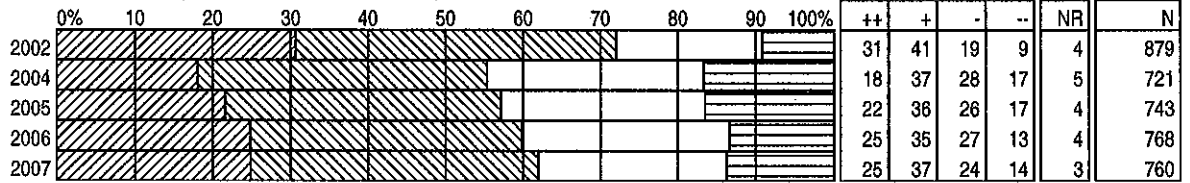
6) To what extent do you get recognition for the work that you do for Edmonton Public Schools?



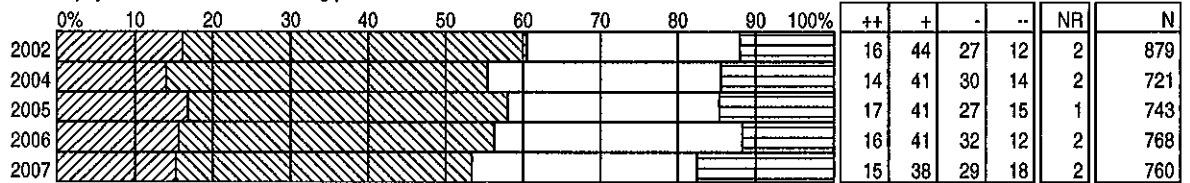
7) To what extent do you feel that your work responsibilities are reasonable?



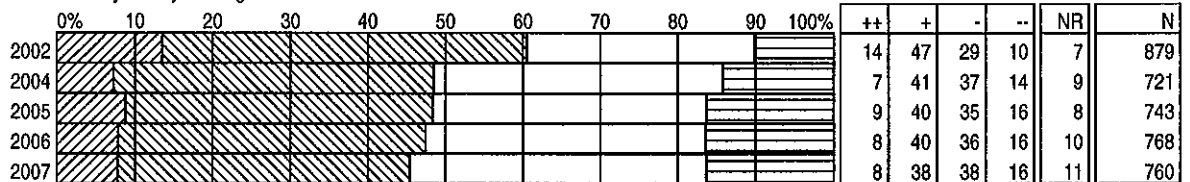
8) To what extent are you satisfied with the opportunities you have for professional development?



9) To what extent are you satisfied with the physical condition of the building you work in?



10a) To what extent are you satisfied with the way money is being used in central services?



* Results weighted

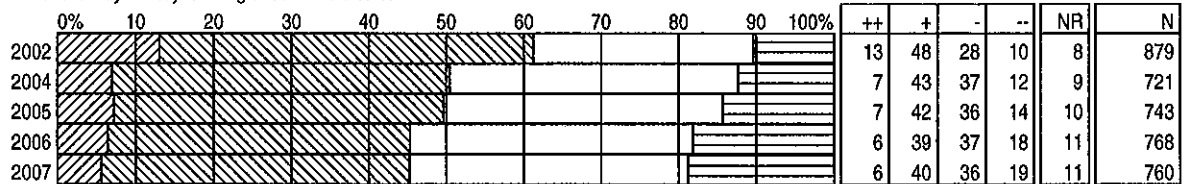
DISTRICT SATISFACTION SURVEY RESULTS 2002-2007

CENTRAL SERVICES

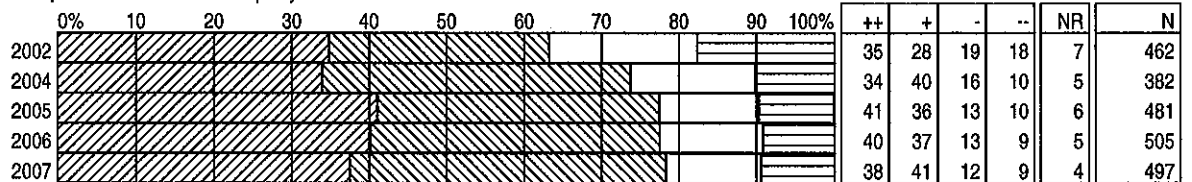
MULTI-YEAR BY QUESTION

CENTRAL SERVICES STAFF
TOTAL DISTRICT STAFF

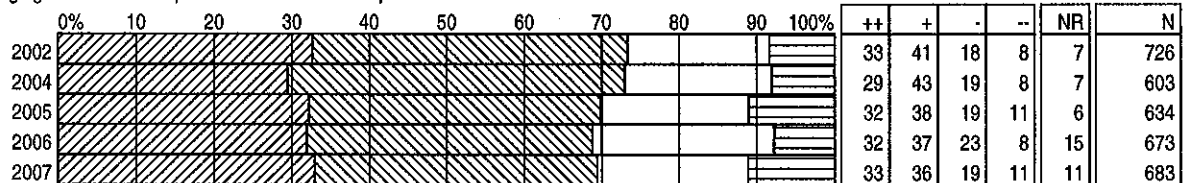
10b) To what extent are you satisfied with the way money is being used in the district?



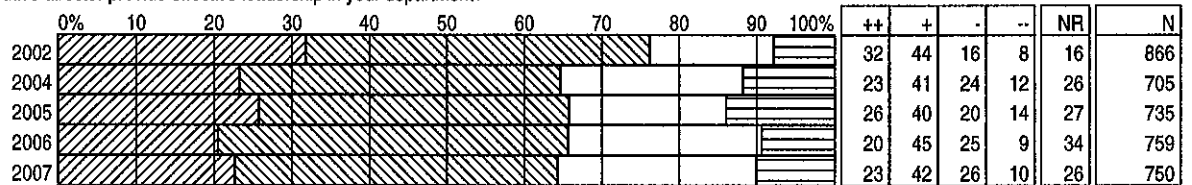
11) To what extent does your supervisor provide effective leadership in your work unit?



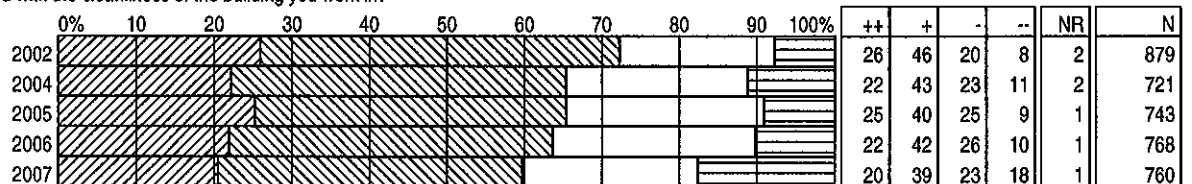
12) To what extent does your managing director/director provide effective leadership?



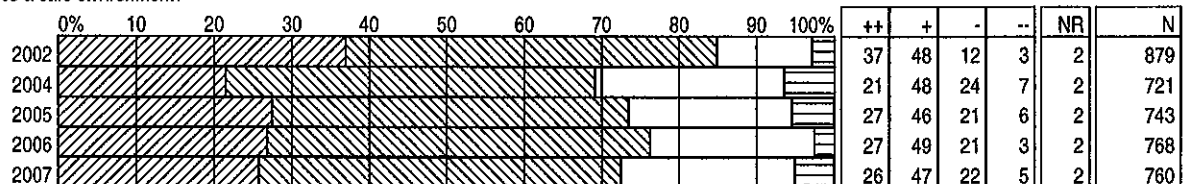
13) To what extent does your executive director provide effective leadership in your department?



14) To what extent are you satisfied with the cleanliness of the building you work in?



15) To what extent is your workplace a safe environment?



* Results weighted

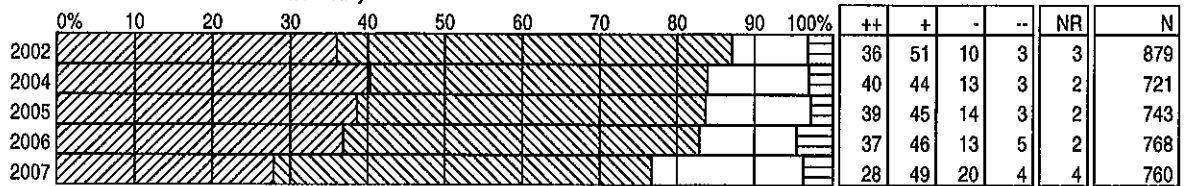
DISTRICT SATISFACTION SURVEY RESULTS 2002-2007

CENTRAL SERVICES

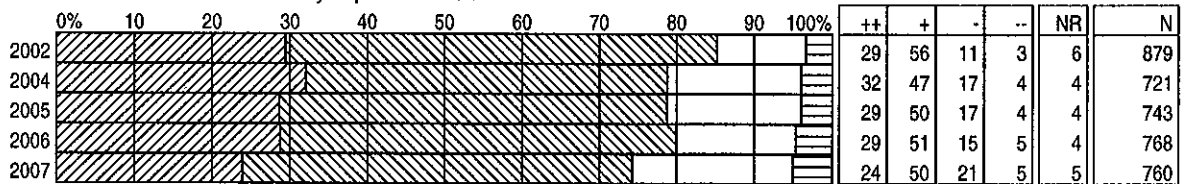
MULTI-YEAR BY QUESTION

CENTRAL SERVICES STAFF
TOTAL DISTRICT STAFF

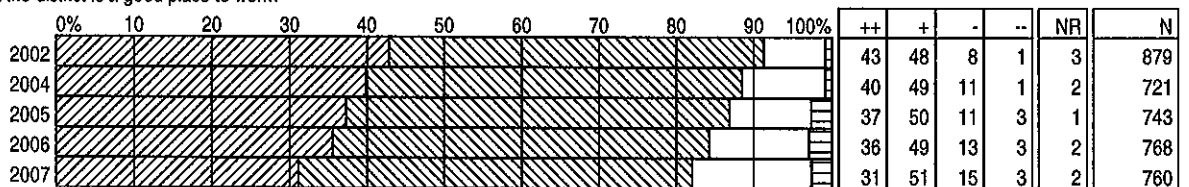
16a) To what extent do you feel that the district's mission is communicated clearly?



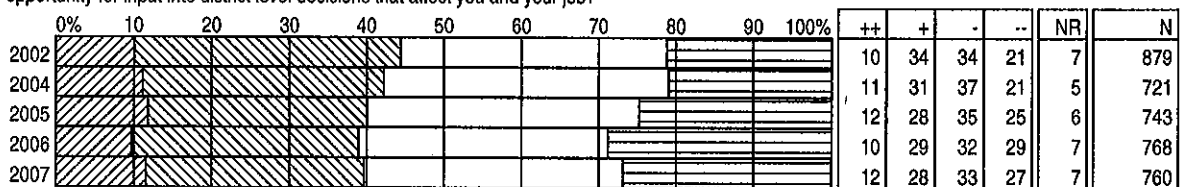
16b) To what extent do you feel that the district's mission is consistent with your personal beliefs?



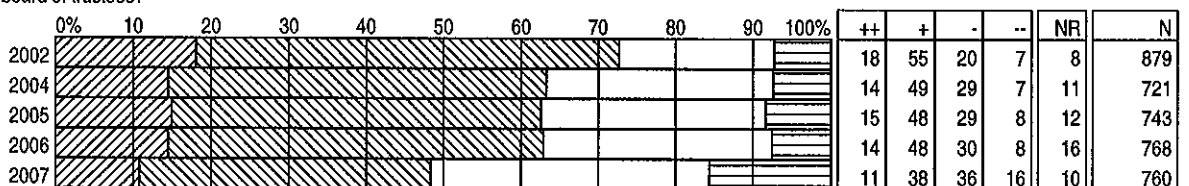
17) To what extent do you feel that the district is a good place to work?



18) To what extent do you have an opportunity for input into district level decisions that affect you and your job?



19) Do you have confidence in the board of trustees?



* Results weighted