

EDMONTON PUBLIC SCHOOLS

March 24, 2009

TO: Board of Trustees

FROM: E. Schmidt, Superintendent of Schools

SUBJECT: Sector Reviews: Update

ORIGINATOR: T. Parker, Assistant Superintendent

RESOURCE

STAFF: Meredith Colgan, Josephine Duquette, Michael Ediger, Leanne Fedor, Jyde Heaven, Kelly Hehn, Roland Labbe, Marco Melfi, Bob Morter, Ann Parker, Lorne Parker, Jana Pedersen, Jim Ray, Amy-Irene Seward, Cindy Skolski

INFORMATION

In October 2008, the Board of Trustees approved the *Annual Implementation Plan 2008-2009* which gave direction to the Administration to undertake a multi-year sector review initiative. A PowerPoint presentation will update the Board of Trustees and the public on the status, process and timelines of the work. Information on the roles and expectations of district administration within the process is also provided. Highlights of the plan are:

Outcomes and General Directions

1. *Managing Student Space: A Sector Planning Approach* is an opportunity for the District to realign programs within school buildings to best meet the needs of students and families. Staff and students will teach and learn in geographically accessible, high quality schools.
2. The sector reviews initiative will provide opportunities for meaningful community engagement; firstly through direct participation in the sector review process; and secondly, through expanded opportunities to occupy space in district buildings where appropriate.
3. The sector reviews will enable the best use of district space for instructional programs and community partners.
4. The sector reviews will impact on existing programs and school space such that there will be recommendations for school closures and program consolidation coming out of the work.

Process

1. All nine sectors in the District will be reviewed, beginning with three sectors that have the greatest need for change. As these sectors are addressed and improved, the focus will shift to other sectors. This 'rotating' approach will carry on into the future.
2. Sector reviews will clearly identify the space required for teaching and learning, space for district educational partners, and space to meet other community needs. The City of Edmonton will play a key role in identifying specific community groups that have needs for space.
3. Sector reviews have commenced within the West 1, South Central, and Central Sectors (Appendix I). Recommendations will arise from these reviews in fall 2010.

4. Sector reviews have commenced in spring 2009 on an accelerated timeline within the Greater Hardisty Area and the City Centre Education Partnership, as approved in the *Annual Implementation Plan: 2008-2009*. It is expected that recommendations will arise from the accelerated reviews in January 2010.

Public Engagement

1. Public engagement (PE) will begin in Fall 2009. Public information sessions and consultations will be conducted by external professionals who will provide community input to review planners and decision-makers.
2. PE will incorporate the findings of the current Board's *Ad Hoc Committee to Review Sustainability Reviews and School Closures*, and will be conducted in accordance with district-approved frameworks, policies or procedures as they currently exist or are developed.
3. The PE model will be structured around four key points of engagement:
 - *Informing communities* about district use of space in the sector;
 - *Involving communities* regarding the amount of space required for instruction;
 - *Consulting with communities* about the most appropriate configurations for instructional space; and
 - *Collaborating with communities* regarding the use of excess space by district partners and the community.
4. The PE firm will report community input directly to the Board of Trustees in the form of detailed and comprehensive reports.
5. A Request for Proposals will be issued to retain a PE firm by May 2009.
6. Clear and timely information will be provided to the Board of Trustees, district staff and the community.

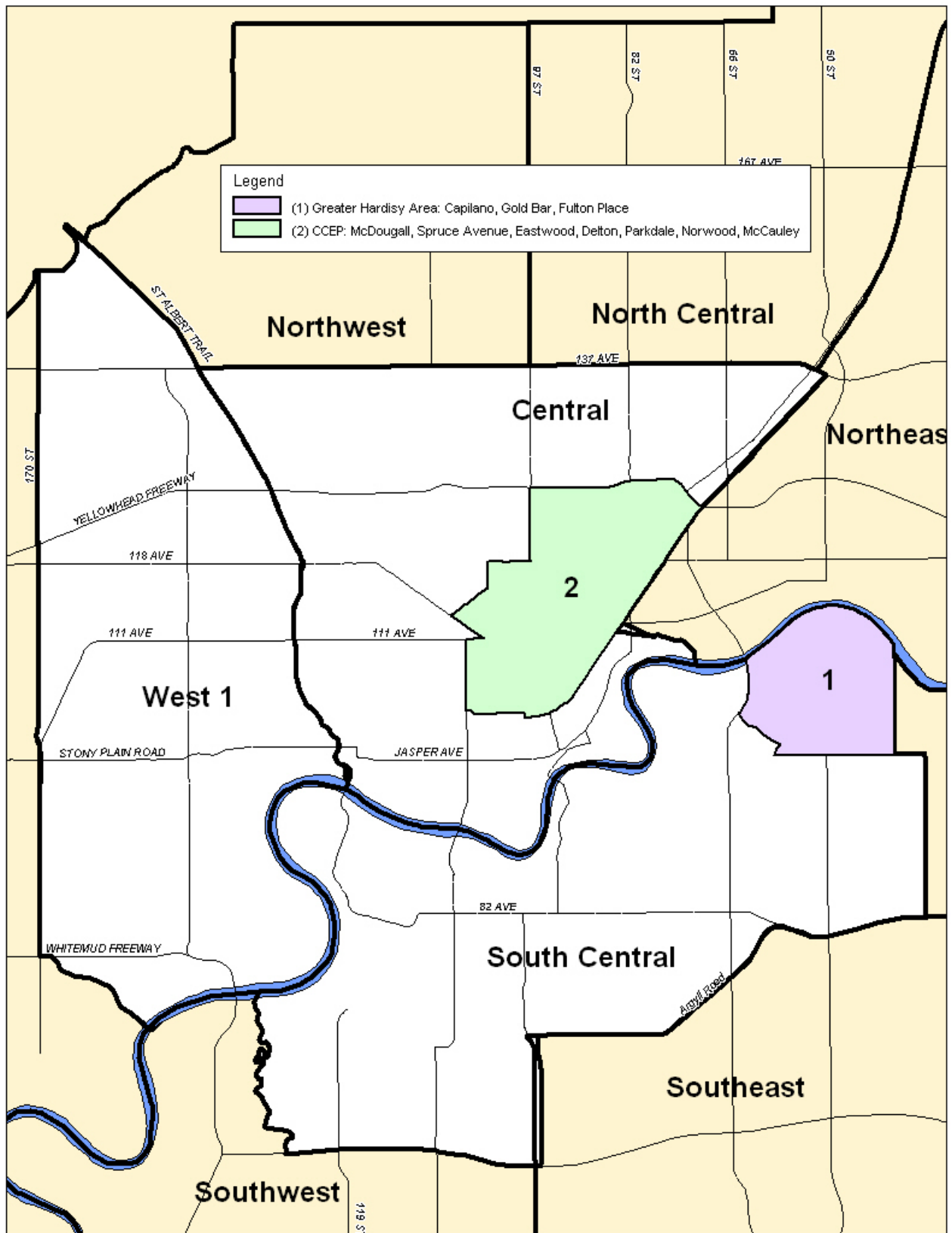
Responsibilities, Roles and Expectations

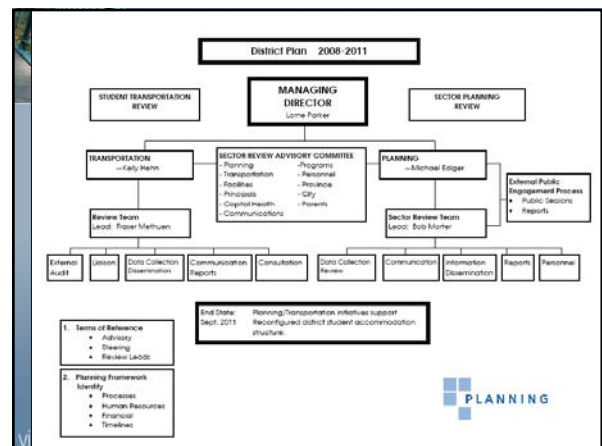
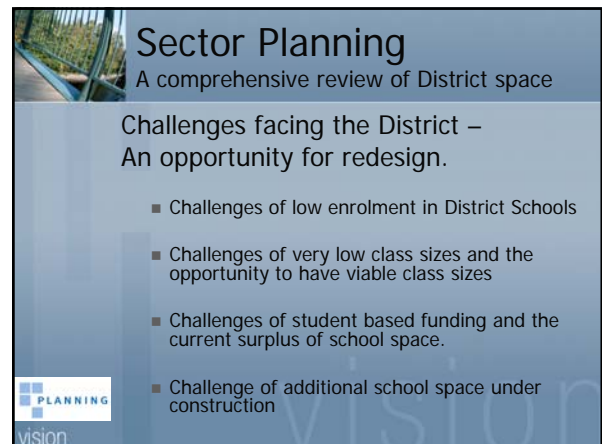
1. The Administration will make recommendations to the Board of Trustees regarding school closures or program consolidations that arise out of the sector review process.
2. The Board of Trustees, having the sole authority to close schools or programs, will approve, amend or defeat any recommendations from the Administration regarding school closures or program consolidations.
3. All district staff and staff groups will provide support to the sector review process during all phases.
4. Central decision units will provide staff and other resources as required by the Superintendent of Schools.
5. Assistant superintendents will be the primary contacts for communications to schools and identifying requirements of schools.
6. The roles and expectations of district principals will be clearly defined and communicated to school communities.
7. Representatives from the community, the City of Edmonton, the Province, key service agencies and central decision unit administrators will be invited to participate in a Sector Review Advisory Committee.
8. The Board of Trustees will continue to advocate for appropriate funding and resources from elected officials at the Province and the City to support the outcomes of this work.

DME:gm

Appendix I - Sector Map

Appendix II - Power Point Presentation Handout Materials








SECTOR REVIEW ADVISORY COMMITTEE

- Planning	- Programs
- Transportation	- Personnel
- Facilities	- Province
- Principals	- City
- Capital Health	- Parents
- Communications	

PLANNING
vision




Sector Planning

A comprehensive review of District space

Public Engagement:

- External Consultants will be selected to work with stakeholders to solicit input.
- There will be multiple rounds of engagement in the sectors with consultants returning at least four times within each area, throughout the first three phases of Sector Planning

PLANNING
vision



Sector Planning

A comprehensive review of District space

Public Engagement

- Retention of a Public Engagement firm to engage stakeholders
- Would undertake consultation on Phases one to three – beginning Spring 2009
 - *How are we using our space*
 - *How much space do we need*
 - *Which space do we need*
 - *What to do with closed space*
- Four separate rounds of consultation over 16 months
- Undertaken within District framework on Public Engagement

PLANNING
vision



Sector Planning

A comprehensive review of District space

The Language of Public Engagement:

- There are five defined stages of Public Engagement as defined by IAP2; Inform, Consult, Involve, Collaborate, and Empower.

PLANNING
vision




Sector Planning

A comprehensive review of District space

Sector Planning has two components in the upcoming cycle:


- The 16 month approach in the majority of the Central, South Central and West One sectors.
- An accelerated approach in the Greater Hardisty Area and the City Centre Education Partnership.

PLANNING
vision



Sector Planning

A comprehensive review of District space



PLANNING
vision

Sector Planning

A comprehensive review of District space

1) District Priority Area: Capital, Old Bar, Fulton Place
2) C-200: McDaniel, Spring Avenue, Eastwood, Dalton, Parkside, Norwood, McCaskey

PLANNING vision

Sector Planning

A comprehensive review of District space

Phase One: Sector Analysis

- Inventory of physical capacity and programs
- Instructional program space identified, surplus capacity

Phase Two: Sector Needs Assessment

- Future program needs, demographic growth
- Partner space requirements
- Engage Principals and Decision Units

Phase Three: Accommodation Options

- Identify role and function of each individual school
- Identify partner criteria and targets

Phase Four: Report and Recommendations

- Incorporate feedback and input from communities
- Prepare recommendation to Board of Trustees

PLANNING vision

Sector Planning

A comprehensive review of District space

Phase One: Sector Analysis

- Reviewed all nine sectors and determined the need to begin with three sectors – Central, South Central and West 1, allowing for cross sector considerations.
- Each of these sectors has significantly more space than required. The remaining sectors will be reviewed in rotation
- Currently
 - Inventory of physical capacity and programs
 - Instructional program space identified, surplus capacity

Public Engagement Late Spring 2009, Fall 2009

- How we are using our space*

PLANNING vision

Sector Planning Timelines

A comprehensive review of District space

2009			2010			2011
Jan	April	Sept	Jan	April	Sept	Jan
Public Engagement						
Phase 1						

PLANNING vision

Sector Planning

A comprehensive review of District space

Phase Two: Sector Needs Assessment

- Future program needs, demographic growth
- Develop/refine parameters for amount of core and complementary instructional space
- Partner space requirements
- Refine Partnership criteria
- Engage Principals and Decision Units and the Public

Public Engagement Fall 2009

- How much space do we need*

PLANNING vision

Sector Planning Timelines

A comprehensive review of District space

2009			2010			2011
Jan	April	Sept	Jan	April	Sept	Jan
Public Engagement						
Phase 1						
			Phase 2			

PLANNING vision

Sector Planning


A comprehensive review of District space

Phase Three: Accommodation Options

- Identify role and function of each individual school
- Identify partner criteria and targets by working with external stakeholders
- Engage Principals, Decision Units and the public
- Winter 2009, Spring 2010

Public Engagement Winter Spring 2010

- *Which space do we need*
- *What to do with closed space*



Sector Planning Timelines

A comprehensive review of District space

2009			2010			2011	
Jan	April	Sept	Jan	April	Sept	Jan	
Public Engagement							
Phase 1			Phase 2			Phase 3	



Sector Planning

A comprehensive review of District space

Phase Four: Report and Recommendations


- Incorporate feedback and input from communities as gathered through Public Engagement
- Planning Department will prepare recommendation to Board of Trustees and Superintendent of Schools
- Draft recommendation in spring of 2010
- Final recommendation in late fall of 2010
- Regulatory process for school closure begins January 2011



Sector Planning Timelines

A comprehensive review of District space

2009			2010			2011	
Jan	April	Sept	Jan	April	Sept	Jan	
Public Engagement							
Phase 1			Phase 2			Phase 3	
Phase 4							



Sector Planning

Greater Hardisty Area and CCEP


- Follow the identical 4 phases
- Accelerated timelines
 - Phase 1 presentation of information May 2009
 - Phase 2 consultation on space requirements October 2009
 - Phase 3 consultation on space configuration November/December 2009
 - Recommendations to the Board of Trustees January 2010



Sector Planning Timelines

A comprehensive review of District space

2009			2010			2011	
Jan	April	Sept	Jan	April	Sept	Jan	
Public Engagement							
Phase 1			Phase 2			Phase 3	
Phase 4							



Greater Hardisty Area, City Centre Education Partnership




Sector Planning

Next Steps

- Development of a Brochure on Sector Planning
- Presentation at Superintendents Leadership Team
- Preparation of RFP for Public Engagement for tender May 2009
- Ongoing space inventories


 vision




Sector Planning

Continuing Steps

- Continuation Review newsletters have been distributed to Coronation, Grovenor and Horse Hill schools
- Meetings were held with the Parent Advisory Councils over a two week period in February
- No decision will be made by the Superintendent until after September 2010


 vision



Sector Planning

Continuing Steps

- Address regular program at Elmwood and Glengarry schools. Meeting with Parent Council in March 2009 and Communities in April 2009
- Recommendation to the Superintendent on the re-designation of the existing attendance areas

 vision



Sector Planning

Continuing Steps

- Aim is to meet the challenges facing the district
- Benefits are:
 - The realignment of Programs and space
 - Opportunity to engage stakeholders
- Overall goal is to provide our students with the best possible learning environments into the future

 vision