

EDMONTON PUBLIC SCHOOLS

January 31, 2006

TO: Board of Trustees

FROM: E. Schmidt, Acting Superintendent of Schools

SUBJECT: Edmonton Student Health Initiative Partnership (ESHIP)

ORIGINATOR: D. Barrett, Executive Director

RESOURCE

STAFF: Danette Andersen, Deborah Brandell, Tana Donald, David Piercey, Elaine Piercey

INFORMATION

Background

The Student Health Initiative Partnership (SHIP) formed in 1999, is a joint endeavor of the provincial government partners of Alberta Education, Health and Wellness, and Children’s Services (Appendix I). Edmonton Student Health Initiative Partnership (ESHIP) services are part of a wide continuum of services that support the health and education needs of students in Edmonton schools and Early Childhood Services (Appendix II). ESHIP provides coordinated supports to children and youth with mild-moderate to severe and complex needs, ESHIP has been a catalyst for creating a coordinated approach to the delivery of school and community-based health and support services to enable children with special health needs to help them participate fully in education programs.

Service Delivery

Effective intervention of supports for children with special health needs is provided through a team approach. Specific aspects of delivery include:

- programs such as the mental health classroom,
- providing hands-on medical support in schools,
- linking program interventions between the home, community and school,
- incorporating parent involvement,
- training and developing skills in staff to support complex needs.

The following chart provides information on the number of children who received enhanced services through ESHIP in the 2004-2005 school year.

Service	Target # to be served	Actual # served
Speech Language Therapy	2,091	2,188
Physical Therapy	157	245
Occupational Therapy	1,630	1,299
Home Care Nursing	117	98
Emotional and Behavioral Supports	2,350	2,205
All Services Combined	6,345	7,867

District Roles

The district plays two roles in ESHIP: Partner and Provider. A partner is required to bring service delivery issues forward and to report on services provided, be a member of the Steering Committee and develop a process that is partnership-led, not managed or directed by any one partner. Problem solving and resolution is also the responsibility of the partners.

As a provider, Consulting Services Special Education Support Team (SEST) is an ESHIP funded program within Consulting Services. The team consists of 19 staff who provide a collaborative model of service to schools and families. These services support students with severe and multiple disabilities in Edmonton Public Schools and Edmonton Catholic Schools.

Service delivery focuses on facilitating student success in their educational program. In Edmonton Public Schools, SEST transition services assist school staff and families as student's move from one school/program to another in either inclusive settings or district centre programs. Last school year SEST provided service to 459 students. SEST liaises with numerous service providers throughout the province.

Additionally, Consulting Services SEST has an Early Childhood Services (ECS) Transition Facilitator. The Transition Facilitator works in collaboration with the ESHIP community student health team, ECS Operators and community schools. This service involves assisting children who have mild, moderate or severe disabilities, and their families as the child transitions from ECS programs to community schools.

Students with Severe Cognitive Disabilities and Complex Medical Needs

The district has identified two Individual Support Programs (elementary and secondary) for students whose complex medical conditions necessitate problem solving and planning of nursing interventions that are beyond the level of professional expertise of the educational staff on site. Additional support of nursing staff, with specialized medical training, is required to assess, analyze, evaluate and make judgments on the impact of the student's medical status and provide regular medical interventions specific to the student's condition on an on-going basis. Placement of these students is coordinated through Leadership Services, who work with Home Care (ESHIP) for Registered Nurse and Licensed Practical Nurse support (Appendix III).

Feedback

Yearly, ESHIP conducts parent and classroom teacher satisfaction surveys. These surveys are distributed to all schools and early childhood societies within the ESHIP boundaries. Results from surveys indicated that all targets were met with results higher than set targets. Parent surveys indicated the families felt supported by ESHIP services (79 per cent) and that the services enhanced school programs (62 per cent). An informal review of partners revealed an increased amount of team-work that is progressive and effective resulting in a partnership that is better able to respond to changes and be flexible in adapting services across their sectors to benefit children.

Summary

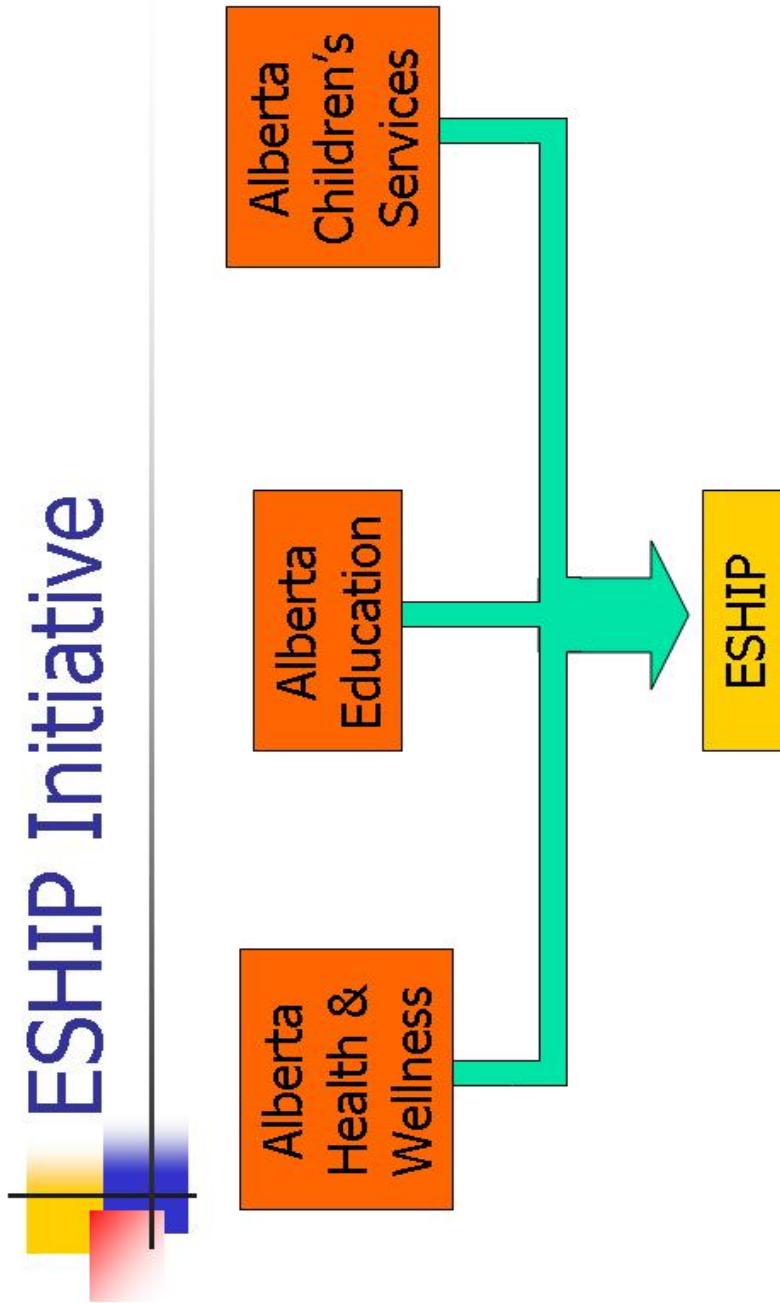
Through ESHIP satisfaction surveys, parents, teachers, administrators and health care professionals are in agreement that services provided by ESHIP are efficient and effective. An understanding and analysis of student health needs clearly indicated that the need and demand for student health services significantly surpass the resources available through

ESHIP. The partnership is committed to making the most effective use of the available resources in order to provide for those who are currently not receiving services or who require enhanced services. Relationships developed between organizations and individuals have led to collaboration in other projects and more effective use of resources. ESHIP continues to provide enhanced services for students with mild-moderate to severe and complex needs within the Edmonton area.

DB:db

APPENDIX I: ESHIP Initiative
APPENDIX II: Services Provided by ESHIP
APPENDIX III: ISP Medically Complex Process for Placement

Source: Edmonton Public Schools, October 2005

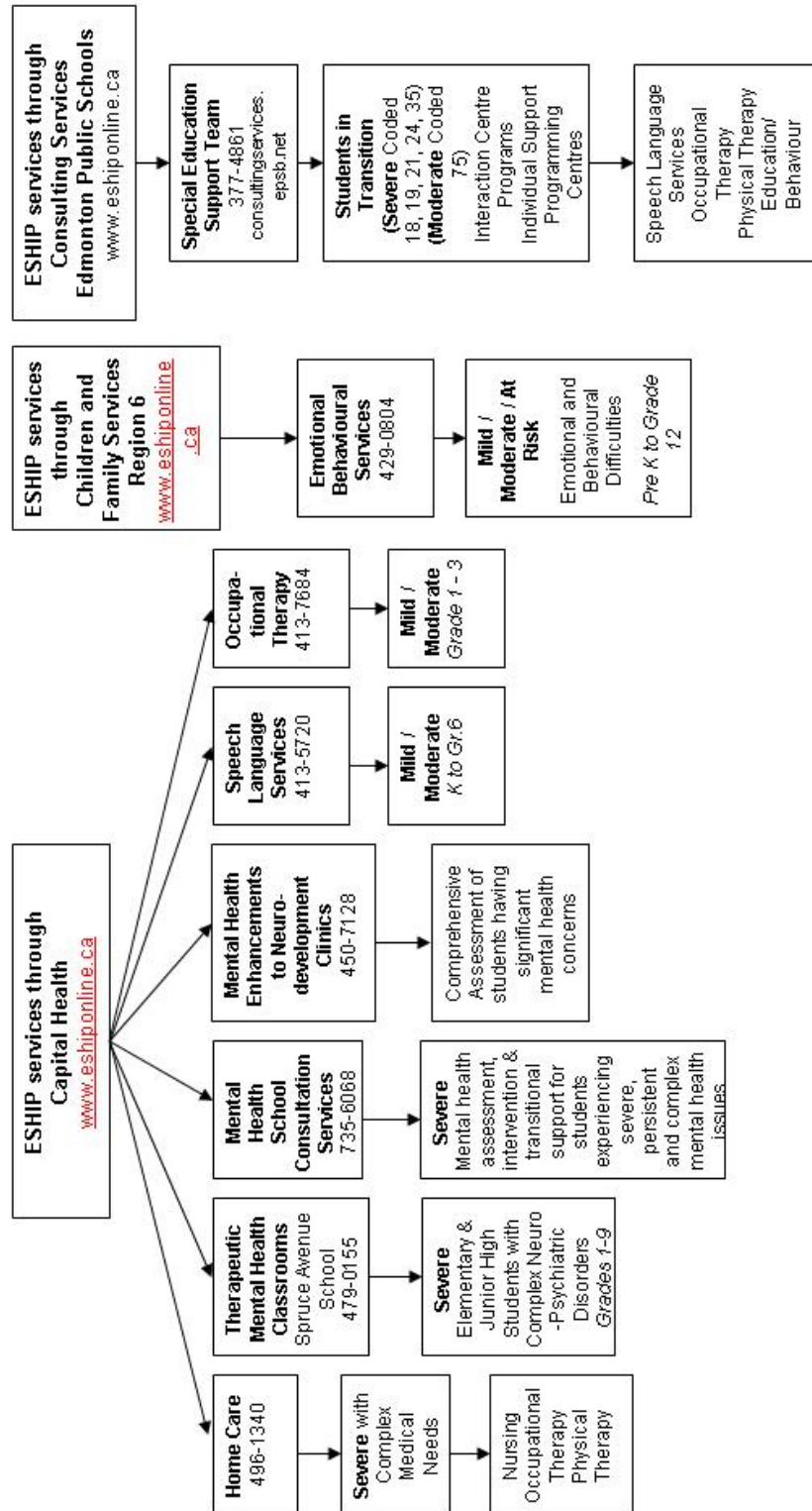


Source: Edmonton Public Schools, October 2005

Services provided by ESHIP (Edmonton Student Health Initiative Partnership)

No cost to schools

ENHANCED SERVICES



**ISP Medically Complex
Process for Placement**

(Source: Edmonton Public Schools, 2003-2004)

- Placement form → not eligibility
 - Directed to Capilano/Vimy program by Leadership Services
- Form will be completed by community school to apply for placement
- Leadership Services will coordinate the placements
- If child is new to the district – no information available, then ESHIP RN would visit home and gather information
 - Put together information so school can provide supports

